

NEMA 1 Medium Hinged Wall Mount



Applications

Designed for use in control and instrumentation applications in areas that do not require oil-tight and dust-tight specifications.

Construction

- Bodies and doors fabricated from 14 gauge steel
- Mounting holes on back of cabinet
- Collar studs provided for mounting optional subpanel
- Doors furnished standard with flush mount quarter-turn style latch
- Doors secured by butt hinges
- Grounding provisions provided

Finish

- ANSI-61 gray polyester powder inside and out over phosphatized surfaces
- Optional subpanels are white polyester powder over phosphatized surfaces

Listings

- UL 50, Type 1
- UL File E6924
- CSA Certified, Type 1
- CSA File LL66078
- NEMA/EEMAC Type 1



Enclosure Shipping Schedule		
Same day	1 - 7 days	1 -10 days
Color indicates shipping lead time in business days.		

Part Number	Price	Body/Door	Enclosure Size HxWxD	Subpanel P/N	Price	Subpanel Size AxB	Subpanel Steel Gauge	E	F	G	I	K	L
N1C121606LP	<--->	14/14	16x12x6.75 (406x305x171)	N1P1216L	<--->	13x10.5 (330x267)	14	13.88 (352)	7 (178)	2.5 (64)	1.06 (27)	5.974 (152)	1.5 (38)
N1C121608LP	<--->	14/14	16x12x8.75 (406x305x222)	N1P1216L	<--->	13x10.5 (330x267)	14	13.88 (352)	7 (178)	2.5 (64)	1.06 (27)	7.974 (203)	1.5 (38)
N1C161606LP	<--->	14/14	16x16x6.75 (406x406x171)	N1P1616	<--->	13x14.5 (330x368)	14	13.88 (352)	11 (279)	2.5 (64)	1.06 (27)	5.974 (152)	1.5 (38)
N1C162006LP	<--->	14/14	20x16x6.75 (508x406x171)	N1P1620	<--->	17x14.5 (432x368)	14	17.88 (454)	11 (279)	2.5 (64)	1.06 (27)	5.974 (152)	1.5 (38)
N1C162008LP	<--->	14/14	20x16x8.75 (508x406x222)	N1P1620	<--->	17x14.5 (432x368)	14	17.88 (454)	11 (279)	2.5 (64)	1.06 (27)	7.974 (203)	1.5 (38)
N1C162406LP	<--->	14/14	24x16x6.75 (610x406x171)	N1P1624	<--->	21x14.5 (533x368)	14	21.88 (556)	11 (279)	2.5 (64)	1.06 (27)	5.974 (152)	1.5 (38)
N1C201606LP	<--->	14/14	16x20x6.75 (406x508x171)	N1P2016	<--->	13x18.5 (330x470)	14	13.88 (352)	15 (381)	2.5 (64)	1.06 (27)	5.974 (152)	1.5 (38)
N1C202006LP	<--->	14/14	20x20x6.75 (508x508x171)	N1P2020	<--->	17x18.5 (432x470)	14	17.88 (454)	15 (381)	2.5 (64)	1.06 (27)	5.974 (152)	1.5 (38)
N1C202008LP	<--->	14/14	20x20x8.75 (508x508x222)	N1P2020	<--->	17x18.5 (432x470)	14	17.88 (454)	15 (381)	2.5 (64)	1.06 (27)	7.974 (203)	1.5 (38)
N1C202406LP	<--->	14/14	24x20x6.75 (610x508x171)	N1P2024	<--->	21x18.5 (533x470)	14	21.88 (556)	15 (381)	2.5 (64)	1.06 (27)	5.974 (152)	1.5 (38)
N1C202408LP	<--->	14/14	24x20x8.75 (610x508x222)	N1P2024	<--->	21x18.5 (533x470)	14	21.88 (556)	15 (381)	2.5 (64)	1.06 (27)	7.974 (203)	1.5 (38)
N1C202410LP	<--->	14/14	24x20x10.75 (610x508x273)	N1P2024	<--->	21x18.5 (533x470)	14	21.88 (556)	15 (381)	2.5 (64)	1.06 (27)	9.974 (253)	1.5 (38)
N1C203006LP	<--->	14/14	30x20x6.63 (762x508x168)	N1P2030	<--->	26x18.5 (660x470)	14	27.5 (699)	12.75 (324)	3.63 (92)	1.25 (32)	5.827 (148)	2 (51)
N1C242008LP	<--->	14/14	20x24x8.75 (508x610x222)	N1P2420	<--->	17x22.5 (432x572)	14	17.88 (454)	19 (483)	2.5 (64)	1.06 (27)	7.974 (203)	1.5 (38)
N1C242406LP	<--->	14/14	24x24x6.75 (610x610x171)	N1P2424	<--->	21x22.5 (533x572)	14	21.88 (556)	19 (483)	2.5 (64)	1.06 (27)	5.974 (152)	1.5 (38)
N1C242408LP	<--->	14/14	24x24x8.75 (610x610x222)	N1P2424	<--->	21x22.5 (533x572)	14	21.88 (556)	19 (483)	2.5 (64)	1.06 (27)	7.952 (202)	1.5 (38)

Note: Subpanels must be ordered separately. Dimensions in inches (millimeters); letters in table correspond to letters on dimensional drawings.

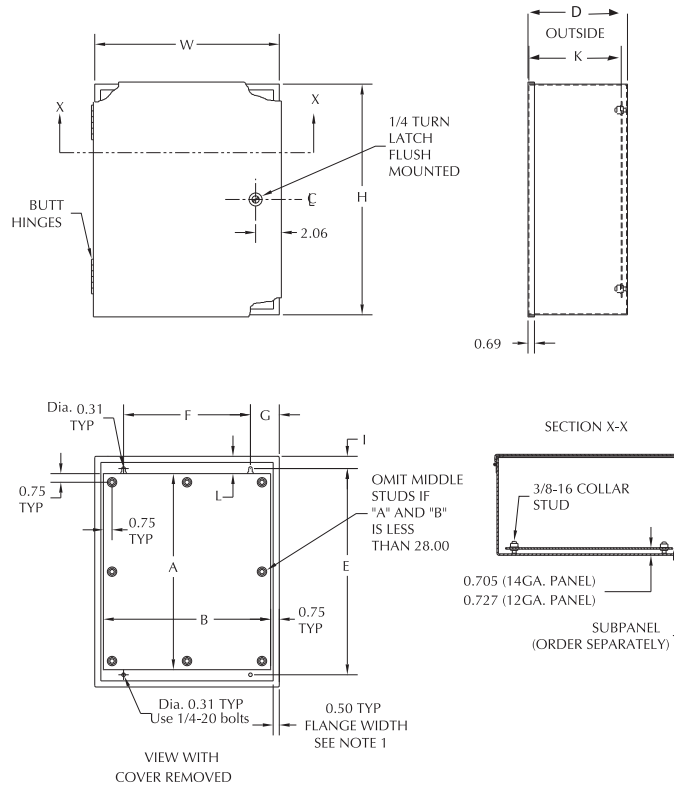
NEMA 1 Medium Hinged Wall Mount

Enclosure Shipping Schedule		
Same day	1 - 7 days	1 -10 days
Color indicates shipping lead time in business days.		

Part Number	Price	Body/Door	Enclosure Size HxWxD	Subpanel P/N	Price	Subpanel Size AxB	Subpanel Steel Gauge	E	F	G	I	K	L
N1C242412LP	<--->	14/14	24x24x12.75 (610x610x324)	N1P2424	<--->	21x22.5 (533x572)	12	21.88 (556)	19 (483)	2.5 (64)	1.06 (27)	11.952 (304)	1.5 (38)
N1C243006LP	<--->	14/14	30x24x6.63 (762x610x168)	N1P2430	<--->	26x22.5 (660x572)	12	27.5 (699)	16.75 (425)	3.63 (92)	1.25 (32)	5.827 (148)	2 (51)
N1C243008LP	<--->	14/14	30x24x8.63 (762x610x219)	N1P2430	<--->	26x22.5 (660x572)	12	27.5 (699)	16.75 (425)	3.63 (92)	1.25 (32)	7.827 (199)	2 (51)
N1C243010LP	<--->	14/14	30x24x10.63 (762x610x270)	N1P2430	<--->	26x22.5 (660x572)	12	27.5 (699)	16.75 (425)	3.63 (92)	1.25 (32)	9.827 (250)	2 (51)
N1C243012LP	<--->	14/14	30x24x12.63 (762x610x321)	N1P2430	<--->	26x22.5 (660x572)	12	27.5 (699)	16.75 (425)	3.63 (92)	1.25 (32)	11.827 (300)	2 (51)
N1C243606LP	<--->	14/14	36x24x6.63 (914x610x168)	N1P2436	<--->	32x22.5 (813x572)	12	33.5 (851)	16.75 (425)	3.63 (92)	1.25 (32)	5.827 (148)	2 (51)
N1C243608LP	<--->	14/14	36x24x8.63 (914x610x219)	N1P2436	<--->	32x22.5 (813x572)	12	33.5 (851)	16.75 (425)	3.63 (92)	1.25 (32)	7.827 (199)	2 (51)
N1C303008LP	<--->	14/14	30x30x8.63 (762x762x219)	N1P3030	<--->	26x28.5 (660x724)	12	33.5 (851)	22.75 (578)	3.63 (92)	1.25 (32)	7.827 (199)	2 (51)
N1C303606LP	<--->	14/14	36x30x6.63 (914x762x168)	N1P3036	<--->	32x28.5 (813x724)	12	33.5 (851)	22.75 (578)	3.63 (92)	1.25 (32)	5.827 (148)	2 (51)
N1C303608LP	<--->	14/14	36x30x8.63 (914x762x219)	N1P3036	<--->	32x28.5 (813x724)	12	33.5 (851)	22.75 (578)	3.63 (92)	1.25 (32)	7.827 (199)	2 (51)
N1C303612LP	<--->	14/14	36x30x12.63 (914x762x321)	N1P3036	<--->	32x28.5 (813x724)	12	33.5 (851)	22.75 (578)	3.63 (92)	1.25 (32)	11.827 (300)	2 (51)

Note: Subpanels must be ordered separately. Dimensions in inches (millimeters); letters in table correspond to letters on dimensional drawings.

Dimensions



- PLC Overview
- DL05/06 PLC
- DL105 PLC
- DL205 PLC
- DL305 PLC
- DL405 PLC
- Field I/O
- Software
- C-more HMIs
- Other HMI
- AC Drives
- Motors
- Steppers/Servos
- Motor Controls
- Proximity Sensors
- Photo Sensors
- Limit Switches
- Encoders
- Current Sensors
- Pushbuttons/Lights
- Process
- Relays/Timers
- Comm.
- TB's & Wiring
- Power
- Circuit Protection
- Enclosures**
- Appendix
- Part Index