

NEMA 4 and 12 Stainless Steel Single-Door Wall Mount (Ultimate Series)



Application

The Hubbell/Wiegmann N412-SS stainless steel series, with its streamlined design, is a perfect fit for mounting electrical or high-tech electronic equipment in a variety of indoor and outdoor settings. It is typically used in the following areas where corrosion-resistant protection is needed: food processing plants, pharmaceutical manufacturing facilities, petrochemical plants, pulp and paper processing, and waste water treatment facilities.

Construction

- Fabricated from 14 gauge 304 stainless steel
- Continuously plasma welded seams
- Door and body stiffeners are provided in larger enclosures for extra rigidity
- Print pocket is provided
- Doors are sealed with poured-in-place polyurethane gasket
- Concealed hinges
- Increased tub openings to accommodate larger size (optional) subpanels
- Collar studs for mounting optional subpanels
- Grounding provisions provided
- Optional subpanels must be ordered separately

- Swing-out panel kits WAJCDFK and WANADFK will not work with these enclosures.
- Doors are interchangeable and easily removable (open to 90° to remove door)
- 1/4 turn semi-flush oil tight latches are supplied to hold door securely closed
- Mounting holes in rear of enclosure
- Optional mounting foot kit is available (required to maintain the NEMA Types 4, 12 and 13 ratings)

Finish

- All exterior surfaces have a smooth grained finish
- Optional subpanels are painted white polyester powder over phosphatized surfaces

Listings

- UL 508, Types 4, 4x 12 and 13 (UL file E64791)
- CSA Certified, Types 4 and 12 (CSA file LL66078)
- Meets NEMA/EEMAC Types 4, 4x, 12 and 13 requirements
- JIC EL-1-71

Enclosure Shipping Schedule

Same day	1 - 7 days	1 -10 days
----------	------------	------------

Color indicates shipping lead time in business days.

Part Number	Price	Body/Door	Enclosure Size HxWxD	Subpanel P/N	Price	Subpanel Size AxB*	C	E	Door Stiffener
N412121206SSC	<--->	14/14	12x12x6 (305x305x152)	NP1212C	<--->	10.2x10.2 (259x259)	6 (152)	-	No
N412161206SSC	<--->	14/14	16x12x6 (406x305x152)	NP1612C	<--->	14.2x10.2 (361x259)	8 (203)	-	No
N412161208SSC	<--->	14/14	16x12x8 (406x305x203)	NP1612C	<--->	14.2x10.2 (361x259)	8 (203)	-	No
N412161606SSC	<--->	14/14	16x16x6 (406x406x152)	NP1616C	<--->	14.2x14.2 (361x361)	8 (203)	-	No
N412161608SSC	<--->	14/14	16x16x8 (406x406x203)	NP1616C	<--->	14.2x14.2 (361x361)	8 (203)	-	No
N412162008SSC	<--->	14/14	16x20x8 (406x508x203)	NP2016C	<--->	14.2x18.2 (361x462)	8 (203)	-	No
N412201606SSC	<--->	14/14	20x16x6 (508x406x152)	NP2016C	<--->	18.2x14.2 (462x361)	10 (254)	-	No
N412201608SSC	<--->	14/14	20x16x8 (508x406x203)	NP2016C	<--->	18.2x14.2 (462x361)	10 (254)	-	No
N412202006SSC	<--->	14/14	20x20x6 (508x508x152)	NP2020C	<--->	18.2x18.2 (462x462)	10 (254)	-	No
N412202008SSC	<--->	14/14	20x20x8 (508x508x203)	NP2020C	<--->	18.2x18.2 (462x462)	10 (254)	-	No
N412202012SSC	<--->	14/14	20x20x12 (508x508x305)	NP2020C	<--->	18.2x18.2 (462x462)	10 (254)	-	No

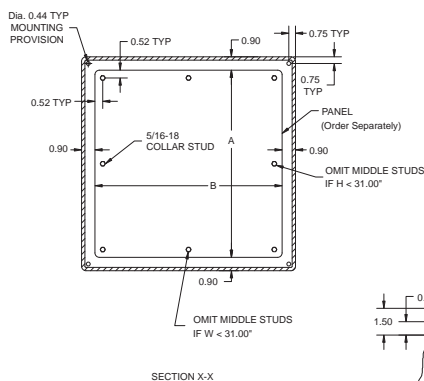
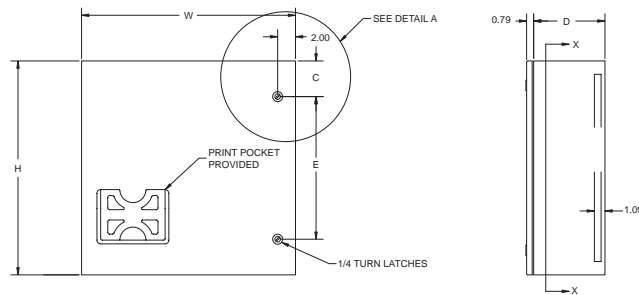
Note: Subpanels must be ordered separately. Dimensions in inches (millimeters); letters in table correspond to letters on dimensional drawings.

NEMA 4 and 12 S/S Single-Door Wall Mount

Part Number	Price	Box Gauge	Enclosure Size HxWxD	Subpanel P/N	Price	Subpanel Size AxB	C	E	Door Stiffener
N412241608SSC	<--->	14/14	24x16x8 (610x406x203)	NP2416C	<--->	22.2x14.2 (564x361)	10 (254)	-	No
N412242008SSC	<--->	14/14	24x20x8 (610x508x203)	NP2420C	<--->	22.2x18.2 (564x462)	12 (305)	-	No
N412242408SSC	<--->	14/14	24x24x8 (610x610x203)	NP2424C	<--->	22.2x22.2 (564x564)	4 (102)	16 (406)	No
N412242412SSC	<--->	14/14	24x24x12 (610x610x305)	NP2424C	<--->	22.2x22.2 (564x564)	4 (102)	16 (406)	No
N412302408SSC	<--->	14/14	30x24x8 (762x610x203)	NP3024C	<--->	28.2x22.2 (716x564)	4 (102)	22 (559)	No
N412302412SSC	<--->	14/14	30x24x12 (762x610x305)	NP3024C	<--->	28.2x22.2 (716x564)	4 (102)	22 (559)	No
N412303008SSC	<--->	14/14	30x30x8 (762x762x203)	NP3030C	<--->	28.2x28.2 (716x716)	4 (102)	22 (559)	No
N412362408SSC	<--->	14/14	36x24x8 (914x610x203)	NP3624C	<--->	34.2x22.2 (869x564)	4 (102)	28 (711)	No
N412362412SSC	<--->	14/14	36x24x12 (914x610x305)	NP3624C	<--->	34.2x22.2 (869x564)	4 (102)	28 (711)	No
N412363008SSC	<--->	14/14	36x30x8 (914x762x203)	NP3630C	<--->	34.2x28.2 (869x716)	4 (102)	28 (711)	No
N412363012SSC	<--->	14/14	36x30x12 (914x762x305)	NP3630C	<--->	34.2x28.2 (869x716)	4 (102)	28 (711)	No
N412363612SSC	<--->	14/14	36x36x12 (914x914x305)	NP3636C	<--->	34.2x34.2 (869x869)	4 (102)	28 (711)	No
N412423612SSC	<--->	14/14	42x36x12 (1067x914x305)	NP4236C	<--->	40.2x34.2 (1021x869)	21 (533)	-	No
N412483612SSC	<--->	14/14	48x36x12 (1219x914x305)	NP4836C	<--->	46.2x34.2 (1173x869)	24 (610)	-	No
N412603612SSC	<--->	14/14	60x36x12 (1524x914x305)	NP6036C	<--->	58.2x34.2 (1478x869)	30 (762)	-	No

Note: Subpanels must be ordered separately. Dimensions in inches (millimeters); letters in table correspond to letters on dimensional drawings.

Dimensions



- Notes:
1. Enclosures include a 3-point latch when H = 40.00" or more.
 2. Large Print Pocket (8 X 10) is furnished if H = 20.00" or more and W = 20.00" or more, otherwise small (6 X 6) print pocket is provided.
 3. Two Hinges provided when H < 36.00". Three Hinges provided when H = 36.00" or greater. Four Hinges provided when H = 48.00" or greater.

