

NEMA 4 JIC Lift-Off Cover Wall Mount



Applications

Designed for use as instrument housings, electrical control enclosures, terminal wiring boxes or electrical junction boxes. Provides protection where equipment is hosed down, very wet or in outdoor applications.

Finish

- ANSI-61 gray polyester powder inside and out over phosphatized surfaces
- Optional subpanels are white polyester powder over phosphatized surfaces



Construction

- Bodies and doors fabricated from 14 gauge steel
- Continuously welded seams ground smooth, less knockouts or holes
- Closed cell oil resistant neoprene gasket
- External mounting feet, top and bottom of enclosure
- Weldnuts are provided for mounting optional subpanels securely on models 6"x4" and larger
- Stainless steel screws and clamps on four sides of cover to assure water tight seal
- Optional subpanels and terminal kits must be ordered separately
- Grounding provisions provided

Listings

- UL 50, Types 4, 12 & 13 (6x6x4 and above)
- UL 508, Types 4,12 & 13 (6x4x3 and smaller)
- UL Files E23553, E64791
- CSA Certified, Types 4 & 12
- CSA File LL66078
- NEMA/EEMAC Types 4,12 & 13
- JIC EL-1-71

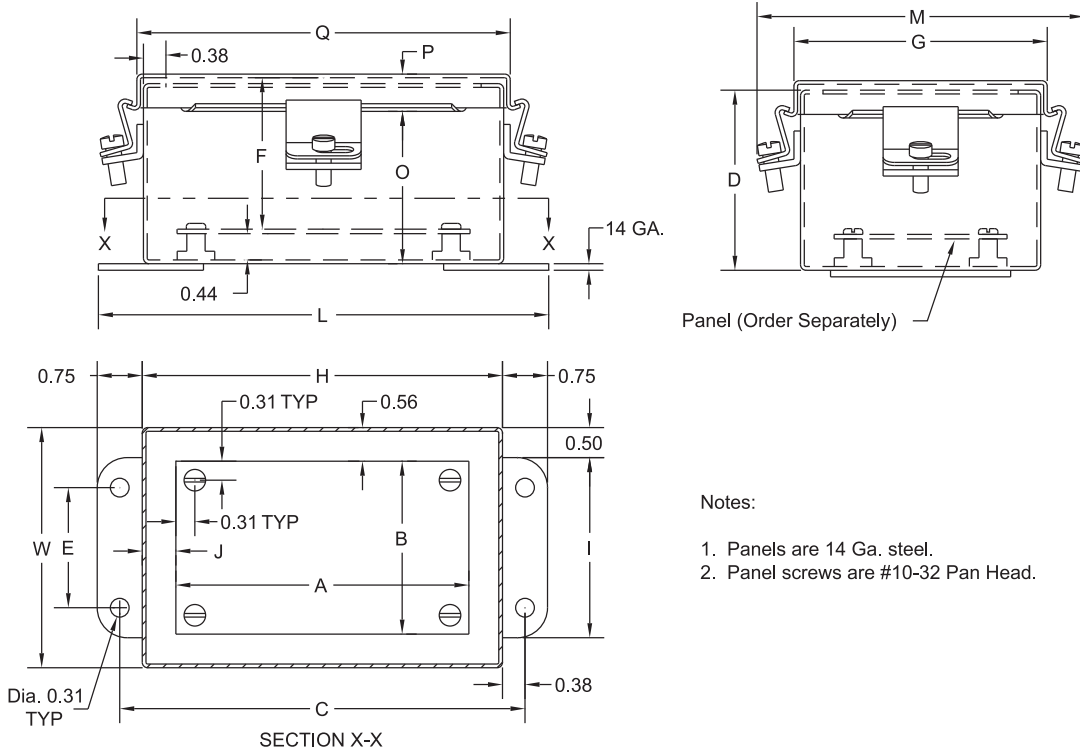
Enclosure Shipping Schedule		
Same day	1 - 7 days	1 -10 days
Color indicates shipping lead time in business days.		

Part Number	Price	Body/Door	Enclosure Size HxWxD	Subpanel P/N	Price	Subpanel Size AxB	Mtg CxÉ	Overall LxM	F	G	I	J	K	N	O	P	Q
BN4040403	<--->	14/14	4x4x3 (102x102x76)	NA	NA	NA	4.75x2 (121x51)	5.50x5.63 (140x143)	2.53 (64)	4.31 (109)	3 (76)	NA	1.38 (35)	1.38 (35)	2.53 (64)	0.63 (16)	4.31 (110)
BN4060403	<--->	14/14	6x4x3 (152x102x76)	P0604	<--->	4.88x2.88 (124x73)	6.75x2 (171x51)	7.50x5.63 (191x143)	2.53 (64)	4.31 (109)	3 (76)	0.56 (14)	1.38 (35)	2.38 (60)	2.53 (64)	0.63 (16)	6.31 (160)
BN4060604	<--->	14/14	6x6x4 (152x152x102)	P0606	<--->	4.88x4.88 (124x124)	6.75x4 (171x102)	7.50x7.63 (191x194)	3.53 (90)	6.31 (160)	5 (127)	0.56 (14)	2.38 (60)	2.38 (60)	3.53 (90)	0.63 (16)	6.31 (160)
BN4080603	<--->	14/14	8x6x3.50 (203x152x89)	P0806	<--->	6.88x4.88 (175x124)	8.75x4 (222x102)	9.50x7.63 (241x194)	3.03 (77)	6.31 (160)	5 (127)	0.56 (14)	2.38 (60)	3.38 (86)	3.03 (77)	0.63 (16)	8.31 (211)
BN4100804	<--->	14/14	10x8x4 (254x203x102)	P1008	<--->	8.88x6.88 (226x175)	10.75x6 (273x152)	11.50x9.63 (292x244)	3.53 (90)	8.31 (211)	7 (178)	0.56 (14)	3.38 (86)	1.50 (38)	3.53 (90)	0.63 (16)	10.31 (262)
BN4121005	<--->	14/14	12x10x5 (305x254x127)	P1210	<--->	10.88x8.88 (276x226)	12.75x8 (324x203)	13.50x11.63 (292x295)	4.53 (115)	10.31 (262)	9 (229)	0.56 (14)	2 (51)	3 (76)	4.53 (115)	0.63 (16)	12.31 (313)
BN4141206	<--->	14/14	14x12x6 (356x305x152)	P1412	<--->	12.88x10.88 (327x276)	14.75x10 (375x254)	15.50x13.63 (394x346)	5.53 (141)	12.31 (313)	11 (279)	0.56 (14)	2 (51)	3 (76)	5.53 (141)	0.63 (16)	14.31 (364)
BN4161406	<--->	14/14	16x14x6 (406x356x152)	P1614	<--->	14.88x12.88 (378x327)	16.75x12 (425x305)	17.50x15.63 (445x397)	5.53 (141)	14.31 (363)	13 (330)	0.56 (14)	3.50 (89)	1.50 (38)	5.53 (141)	0.63 (16)	16.31 (414)

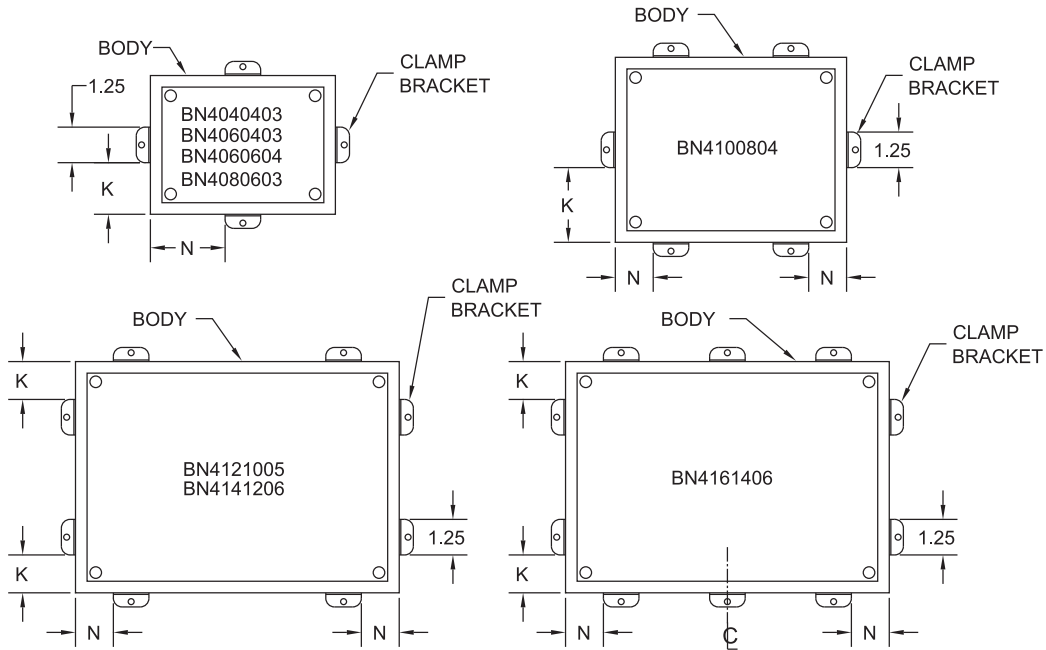
Note: Subpanels must be ordered separately. Dimensions in inches (millimeters); letters in table correspond to letters on dimensional drawings.

NEMA 4 JIC Lift-Off Cover Wall Mount

Dimensions



CLAMP BRACKET LOCATIONS



- PLC Overview
- DL05/06 PLC
- DL105 PLC
- DL205 PLC
- DL305 PLC
- DL405 PLC
- Field I/O
- Software
- C-more HMIs
- Other HMI
- AC Drives
- Motors
- Steppers/ Servos
- Motor Controls
- Proximity Sensors
- Photo Sensors
- Limit Switches
- Encoders
- Current Sensors
- Pushbuttons/ Lights
- Process
- Relays/ Timers
- Comm.
- TB's & Wiring
- Power
- Circuit Protection
- Enclosures
- Appendix
- Part Index