

NEMA 4X JIC Clamp Cover Wall Mount



Applications

Provides unmatched protection for housing electrical components in highly corrosive environments. This enclosure is used in indoor and outdoor settings that are frequently wet or have constant exposure to water, other liquids, or contaminants.



Construction

- Bodies, doors are fabricated from 16 gauge type 304 stainless steel
- Continuously welded seams ground smooth, less knockouts or holes
- Closed cell oil resistant neoprene gasket
- External mounting feet, top and bottom of enclosure
- Weldnuts are provided on models 6" x 4" and larger to secure optional subpanel
- Stainless steel screws and clamps on four sides of cover assure water-tight seal

- Grounding provisions provided
- Optional panels and terminal kits must be ordered separately

Finish

- Cover and outside of enclosure have a smooth grained finish
- Optional subpanels are white polyester powder over phosphatized surfaces

Listings

- UL 50, Types 4, 4X, 12 & 13 (6x6x4 and above)
- UL 508, Types 4, 4X, 12 & 13 (6x4x3 and smaller)
- UL File E23553, E64791
- CSA Certified, Types 4 & 12
- CSA File LL66078
- NEMA/EEMAC Types 4, 4X, 12 & 13
- JIC EL-1-71

| Enclosure Shipping Schedule | | |
|-----------------------------|------------|-------------|
| Same day | 1 - 7 days | 1 - 10 days |

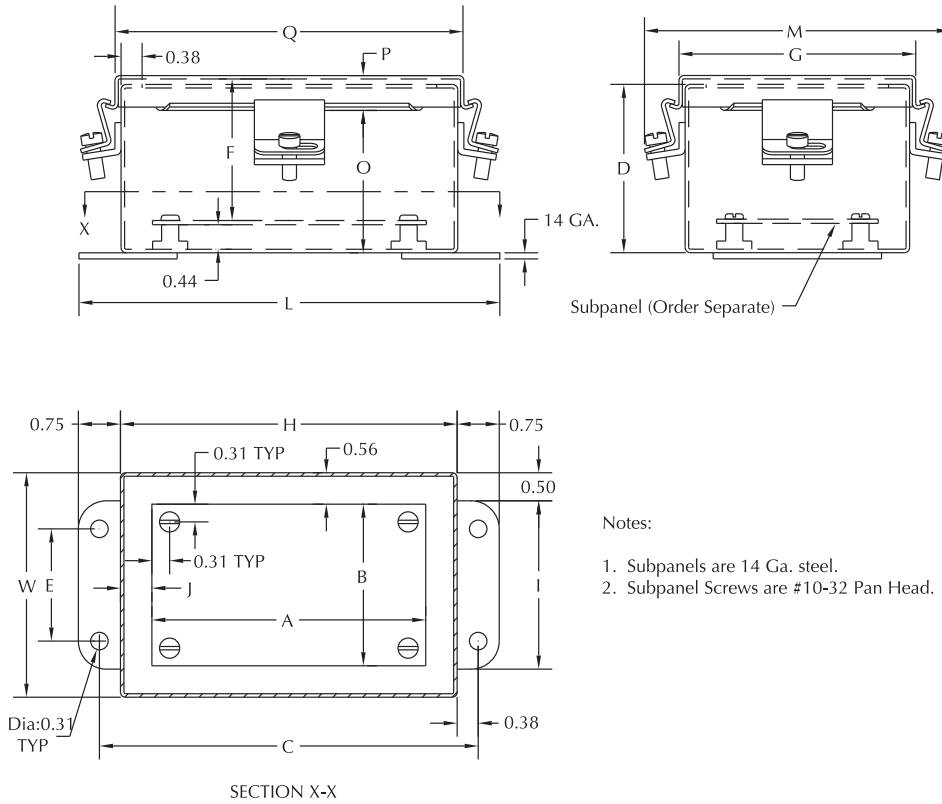
Color indicates shipping lead time in business days.

| Part Number | Price | Body/Door | Enclosure Size HxWxD | Subpanel P/N | Price | Subpanel Size AxB | Mtg CxÉ | Overall LxM | F | G | I | J | K | N | O | P | Q |
|--------------------|-------|-----------|--------------------------|--------------|-------|--------------------------|-----------------------|--------------------------|---------------|----------------|-------------|--------------|--------------|--------------|---------------|--------------|----------------|
| BN4040403SS | <---> | 16/16 | 4x4x3 (102x102x76) | NA | | NA | 4.75x2.00 (121x51) | 5.50x5.63 (140x143) | 2.53 (64) | 4.31 (109) | 3 (76) | NA | 1.38 (35) | 1.38 (35) | 2.53 (64) | 0.63 (16) | 4.31 (110) |
| BN4060403SS | <---> | 16/16 | 6x4x3 (152x102x76) | P0604 | <---> | 4.88x2.88 (124x73) | 6.75x2 (171x51) | 7.50x5.63 (191x143) | 2.53 (64) | 4.31 (109) | 3 (76) | 0.56 (14) | 1.38 (35) | 2.38 (60) | 2.53 (64) | 0.63 (16) | 6.31 (160) |
| BN4060604SS | <---> | 16/16 | 6x6x4 (152x152x102) | P0606 | <---> | 4.88x4.88 (124x124) | 6.75x4 (171x102) | 7.50x7.63 (191x194) | 3.53 (90) | 6.31 (160) | 5 (127) | 0.56 (14) | 2.38 (60) | 2.38 (60) | 3.53 (90) | 0.63 (16) | 6.31 (160) |
| BN4080604SS | <---> | 16/16 | 8x6x4 (203x152x102) | P0806 | <---> | 6.88x4.88 (175x124) | 8.75x4 (222x102) | 9.50x7.63 (241x194) | 3.53 (90) | 6.31 (160) | 5 (127) | 0.56 (14) | 2.38 (60) | 3.38 (86) | 3.53 (90) | 0.63 (16) | 8.31 (211) |
| BN4100804SS | <---> | 16/16 | 10x8x4 (254x203x102) | P1008 | <---> | 8.88x6.88 (226x175) | 10.75x6 (273x152) | 11.50x9.63 (292x244) | 3.53 (90) | 8.31 (211) | 7 (178) | 0.56 (14) | 3.38 (86) | 1.50 (38) | 3.53 (90) | 0.63 (16) | 10.31 (262) |
| BN4121005SS | <---> | 16/16 | 12x10x5 (305x254x127) | P1210 | <---> | 10.88x8.88 (276x226) | 12.75x8 (324x203) | 13.50x11.63 (292x295) | 4.53 (115) | 10.31 (262) | 9 (229) | 0.56 (14) | 2 (51) | 3 (76) | 4.53 (115) | 0.63 (16) | 12.31 (313) |
| BN4141206SS | <---> | 16/16 | 14x12x6 (356x305x152) | P1412 | <---> | 12.88x10.88 (327x276) | 14.75x10 (375x254) | 15.50x13.63 (394x346) | 5.53 (141) | 12.31 (313) | 11 (279) | 0.56 (14) | 2 (51) | 3 (76) | 5.53 (141) | 0.63 (16) | 14.31 (364) |
| BN4161406SS | <---> | 16/16 | 16x14x6 (406x356x152) | P1614 | <---> | 14.88x12.88 (378x327) | 16.75x12 (425x305) | 17.50x15.63 (445x397) | 5.53 (141) | 14.31 (363) | 13 (330) | 0.56 (14) | 3.50 (89) | 1.50 (38) | 5.53 (141) | 0.63 (16) | 16.31 (414) |

Note: Subpanels must be ordered separately. Dimensions in inches (millimeters); letters in table correspond to letters on dimensional drawings.

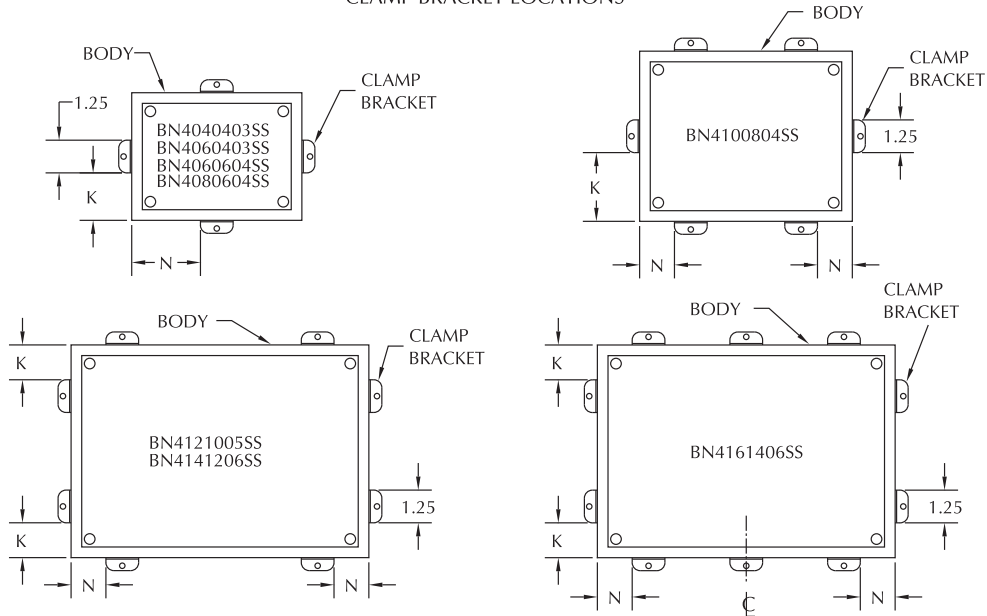
NEMA 4X JIC Clamp Cover Wall Mount

Dimensions



- Notes:
1. Subpanels are 14 Ga. steel.
 2. Subpanel Screws are #10-32 Pan Head.

CLAMP BRACKET LOCATIONS



PLC Overview

DL05/06 PLC

DL105 PLC

DL205 PLC

DL305 PLC

DL405 PLC

Field I/O

Software

C-more HMIs

Other HMI

AC Drives

Motors

Steppers/Servos

Motor Controls

Proximity Sensors

Photo Sensors

Limit Switches

Encoders

Current Sensors

Pushbuttons/Lights

Process

Relays/Timers

Comm.

TB's & Wiring

Power

Circuit Protection

Enclosures

Appendix

Part Index