

NEMA 4X Stainless Steel Single-Door Wall Mount



Applications

Provides unmatched protection for housing electrical components in highly corrosive environments. This enclosure is used in indoor and outdoor settings that are frequently wet or have constant exposure to water, other liquids, or contaminants.

- Print pocket is provided
- Doors are sealed with poured-in-place polyurethane gasket
- Collar studs provided for mounting optional subpanels
- External mounting feet for mounting enclosure
- Grounding provisions provided
- Optional subpanels must be ordered separately



Construction

- Fabricated from 14 gauge type 304 stainless steel
- Continuously plasma welded seams
- Door and body stiffeners are provided in larger enclosures for extra rigidity
- Rolled lip on three sides of door and all sides of enclosure opening is provided to exclude liquids and contaminants
- Quick and easy-to-operate stainless steel door clamps are provided
- Hasp and staple is provided for padlocking

Finish

- Cover and outside of enclosure have smooth grained finish.
- Optional subpanels are white polyester powder over phosphatized surfaces

Listings

- UL 50, Types 4, 4X, 12 and 13 (File E6924)
- CSA Certified, Types 4 and 12 (File LL66078)
- Meets NEMA/EEMAC Types 4, 4X, 12 and 13 requirements
- JIC EL-1-71

| Enclosure Shipping Schedule | | |
|--|------------|-------------|
| Same day | 1 - 7 days | 1 - 10 days |
| Color indicates shipping lead time in business days. | | |

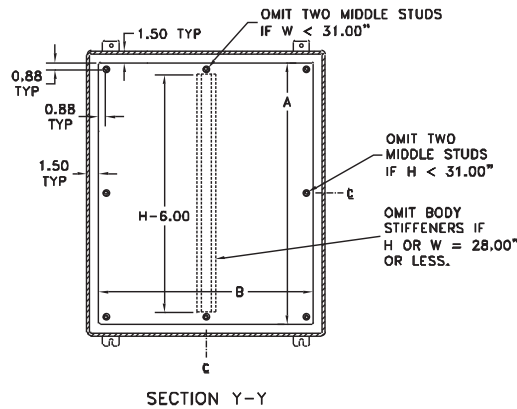
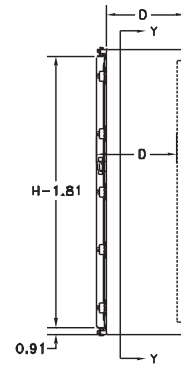
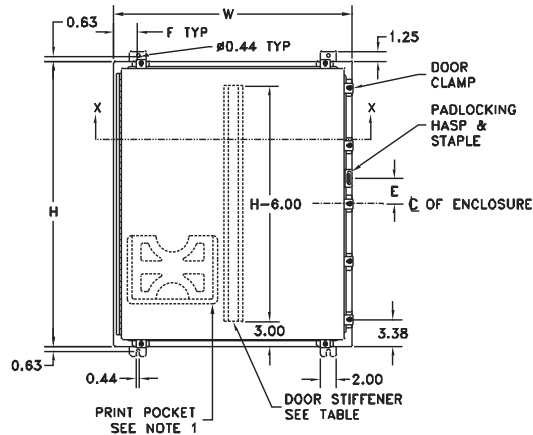
NOTE: Do NOT use NPxxxC subpanels in NEMA 1, NEMA 4 and 4X, and NEMA 12 enclosures. For example: Subpanel NP1612C will not fit enclosure WA161206FM (NP1612 is the correct subpanel). Only use NPxxx subpanels in NEMA 1, NEMA 4 and 4X, and NEMA 12 enclosures.

| Part Number | Price | Body/Door | Enclosure Size HxWxD | Subpanel P/N | Price | Subpanel Size AxB | C | E | Stiffener |
|-------------|-------|-----------|---------------------------|--------------|-------|-------------------|------------|----------------|------------------------|
| SSN4161206 | <---> | 14/14 | 16x12x6 (406x305x152) | NP1612 | <---> | 13x9 (330x229) | - | 0 | door: no body: no |
| SSN4161208 | <---> | 14/14 | 16x12x8 (406x305x203) | NP1612 | <---> | 13x9 (330x229) | - | 0 | door: no body: no |
| SSN4201606 | <---> | 14/14 | 20x16x6 (508x406x152) | NP2016 | <---> | 17x13 (432x330) | - | 0 | door: no body: no |
| SSN4201608 | <---> | 14/14 | 20x16x8 (508x406x203) | NP2016 | <---> | 17x13 (432x330) | - | 0 | door: no body: no |
| SSN4202006 | <---> | 14/14 | 20x20x6 (508x508x152) | NP2020 | <---> | 17x17 (432x432) | - | 0 | door: no body: no |
| SSN4242006 | <---> | 14/14 | 24x20x6 (610x508x152) | NP2420 | <---> | 21x17 (533x432) | - | 4.313 (110) | door: no body: no |
| SSN4242008 | <---> | 14/14 | 24x20x8 (610x508x203) | NP2420 | <---> | 21x17 (533x432) | - | 4.313 (110) | door: no body: no |
| SSN4242408 | <---> | 14/14 | 24x24x8 (610x610x203) | NP2424 | <---> | 21x21 (533x533) | - | 4.313 (110) | door: no body: no |
| SSN4302408 | <---> | 14/14 | 30x24x8 (762x610x203) | NP3024 | <---> | 27x21 (686x533) | - | 5.813 (148) | door: no body: no |
| SSN4362408 | <---> | 14/14 | 36x24x8 (914x610x203) | NP3624 | <---> | 33x21 (838x533) | - | 7.313 (186) | door: no body: no |
| SSN4363010 | <---> | 14/14 | 36x30x10 (914x762x254) | NP3630 | <---> | 33x27 (838x686) | 9 (229) | 7.313 (186) | door: no body: yes |
| SSN4363612 | <---> | 14/14 | 36x36x12 (914x914x305) | NP3636 | <---> | 33x33 (838x838) | 9 (229) | 7.313 (186) | door: yes body: yes |

Note: Subpanels must be ordered separately. Dimensions in inches (millimeters); letters in table correspond to letters on dimensional drawings.

NEMA 4X Stainless Steel Single-Door Wall Mount

Dimensions



NOTES:

1. Large print pocket (8X10) is furnished if H = 20.00" or more and W = 20.00" or more. Otherwise small (6X6) print pocket is provided.
2. Panels are made from 12 Ga. steel.
3. Panels have flanges along all sides when either dimension exceeds 17".
4. The number of door clamps is dependent on size of enclosure. Clamps are furnished along three sides of door.
5. F = 3" when W is 16" or greater and 1-1/4" when W is 12" or less.

