



Pneumatic Direction Control Solenoid Valve Manifolds and Accessories



AM Series Manifolds

Pneumatic Directional Control Solenoid Valve Series Accessories			
Part No.	Price	Description	Weight (lbs)
AM-522	<--->	NITRA pneumatic valve manifold, 5-port (4-way), 2-station, for use with AVS-52 series directional control valves. Valve mounting screws and gaskets included.	0.5
AM-524	<--->	NITRA pneumatic valve manifold, 5-port (4-way), 4-station, for use with AVS-52 series directional control valves. Valve mounting screws and gaskets included.	0.9
AM-526	<--->	NITRA pneumatic valve manifold, 5-port (4-way), 6-station, for use with AVS-52 series directional control valves. Valve mounting screws and gaskets included.	1.2
AM-528	<--->	NITRA pneumatic valve manifold, 5-port (4-way), 8-station, for use with AVS-52 series directional control valves. Valve mounting screws and gaskets included.	1.5
AM-52BP	<--->	NITRA pneumatic blanking plate for use with AM-52 series manifolds. Mounting screws provided.	0.1
AM-532	<--->	NITRA pneumatic valve manifold, 5-port (4-way), 2-station, for use with AVS-53 series directional control valves. Valve mounting screws and gaskets included.	0.8
AM-534	<--->	NITRA pneumatic valve manifold, 5-port (4-way), 4-station, for use with AVS-53 series directional control valves. Valve mounting screws and gaskets included.	1.4
AM-536	<--->	NITRA pneumatic valve manifold, 5-port (4-way), 6-station, for use with AVS-53 series directional control valves. Valve mounting screws and gaskets included.	1.9
AM-538	<--->	NITRA pneumatic valve manifold, 5-port (4-way), 8-station, for use with AVS-53 series directional control valves. Valve mounting screws and gaskets included.	2.5
AM-53BP	<--->	NITRA pneumatic blanking plate for use with AM-53 series manifolds. Mounting screws provided.	0.1
AVP-31BKT	<--->	NITRA pneumatic individual mounting bracket for use with AVP-31 series directional control valves.	0.1
AVP-31KIT	<--->	NITRA (tm) pneumatic stacking screw kit for use with AVP-31 directional control valves. One kit is required for each additional AVP-31 valve added to the stack.	0.1



AM-52BP



AVP-31BKT

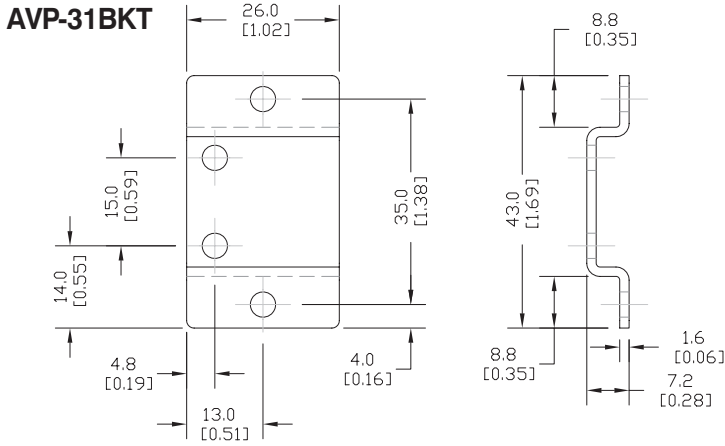


AVP-31KIT

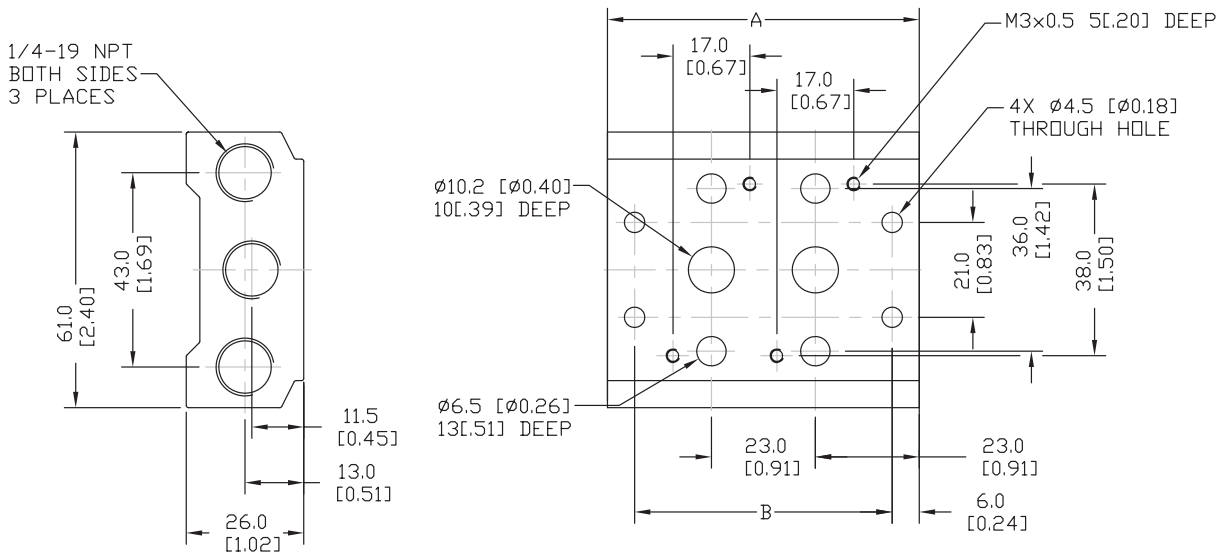


Pneumatic Direction Control Solenoid Valve Manifolds and Accessories

Dimensions



AM 52 Series Manifolds



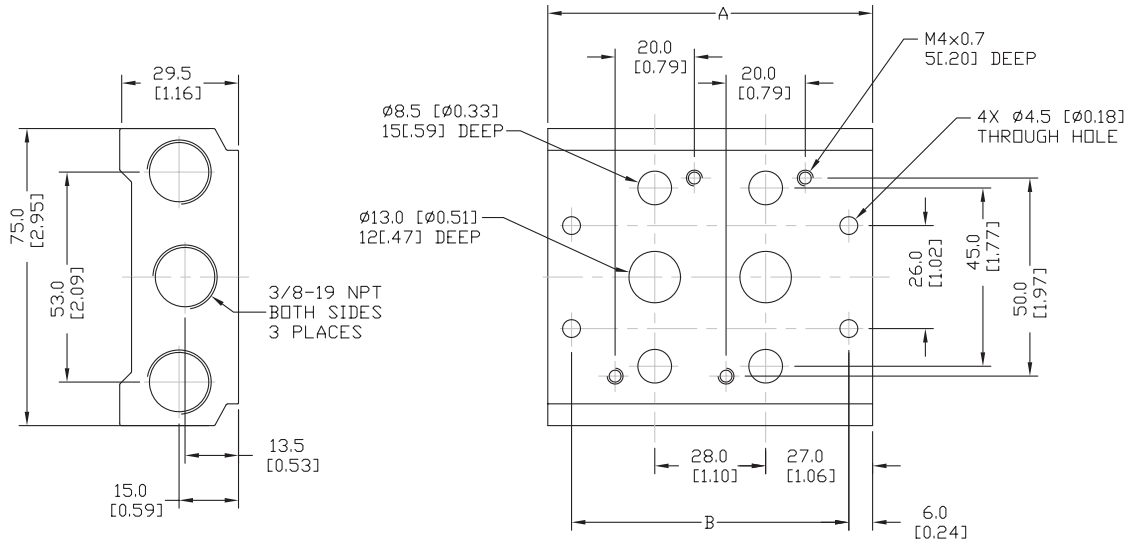
MANIFOLD	A	B
AM-522	69[2.7]	57[2.2]
AM-524	115[4.5]	103[4.1]
AM-526	161[6.3]	149[5.9]
AM-528	207[8.1]	195[7.7]

Dimensions in mm [inches]



Pneumatic Direction Control Solenoid Valve Manifolds and Accessories

AM 53 Series Manifolds



MANIFOLD	A	B
AM-532	82[3.2]	70[2.8]
AM-534	138[5.4]	126[5.0]
AM-536	194[7.6]	182[7.2]
AM-538	250[9.8]	238[9.4]

Dimensions in mm [inches]

Solenoid Valve Cables and Connectors

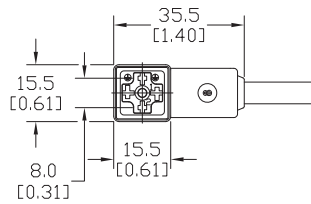
These high quality connectors and over-molded cables help reduce wiring time. The lower voltage models, 24V or 110V AC/DC, include built-in surge suppression, Yellow LED indicator and are rated for connecting with electronics. The 230V AC/DC models are rated for straight wired products. All models are available in five sizes based on DIN 43650.

Features

- 8mm, 9.4mm, 10mm, 11mm and 18mm square DIN styles
- Fits most popular solenoid valves and sensors
- Suppression and LED indication available in 24V or 110V AC/DC models
- PVC jacketed cables in 1, 3 or 5 meter lengths on select connectors
- Field wireable connectors on select models
- Polarity insensitive (follow solenoid, sensor, or other devices wiring diagram)

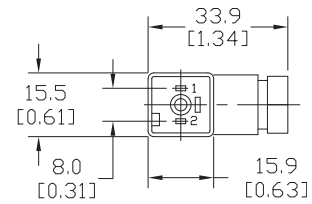
8mm Connectors

Dimensions shown
mm [inches]



Height = 25mm [0.98in]

Connector with Cable



Height = 26mm [1.02]

Field Wireable Connector

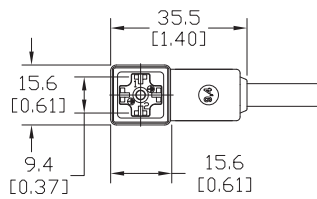
8mm (3-pole) Connectors (per DIN 43650 Form C)																
Part No.	Price	Voltage (AC/DC)	Current Rating	IP Rating	Wire Size	Cable Dia. (in.)	LED	Surge Protection	Wiring Figure	Screw Size/Torque	Weight (lbs)	Agency Approval				
SC8-LS24-3	<-->	24 ±20%	max 4A	67	18 AWG	0.23	yes	zener diode (D-Z DO-15 47V 2W)	1	m2.5-0.45x25mm/0.4 Nm (3.5 in lb)	0.40	CSA (080128-0-000)				
SC8-LS24-5	<-->										0.65					
SC8-LS110-3	<-->	110 ±10%						65	Solid 12 AWG Stranded 14 AWG w/Ferrule 16 AWG	gland size 0.20 to 0.24	no		none	9	m2.5-0.45x25mm/0.5 Nm (4.4 in lb)	0.41
SC8-LS110-5	<-->															0.63
SC8-3	<-->	230	max 6A	65	18 AWG	0.23	no	none	2	m2.5-0.45x25mm/0.5 Nm (4.4 in lb)	0.39	none				
SC8-0	<-->										0.10					
SC8-1	<-->										0.10					
SC8-5	<-->										0.68					

Please note: The above parts are not compatible with the AVP and AVS series valves, which have 11mm DIN plugs.

Last digit in part number denotes cable length in meters, a 0 indicates field termination.

9.4mm Connectors

Dimensions shown
mm [inches]



Height = 25mm [0.98in]

Connector with Cable

9.4mm (3-pole) Connectors (DIN Style, Form C Industrial)																
Part No.	Price	Voltage (AC/DC)	Current Rating	IP Rating	Wire Size	Cable Dia. (in.)	LED	Surge Protection	Wiring Figure	Screw Size/Torque	Weight (lbs)	Agency Approval				
SC9-LS24-3	<-->	24 ±20%	max 4A	67	18 AWG	0.23	yes	zener diode (D-Z DO-15 47V 2W)	1	m3-0.5x26mm/0.4 Nm (3.5 in lb)	0.40	CSA (080128-0-000)				
SC9-LS24-5	<-->										0.64					
SC9-LS110-3	<-->	110 ±10%						65	Solid 12 AWG Stranded 14 AWG w/Ferrule 16 AWG	gland size 0.20 to 0.24	no		none	9	m3-0.5x26mm/0.5 Nm (4.4 in lb)	0.40
SC9-LS110-5	<-->															0.64
SC9-3	<-->	230	max 6A	65	18 AWG	0.23	no	none	2	m3-0.5x26mm/0.5 Nm (4.4 in lb)	0.40	none				
SC9-5	<-->										0.64					

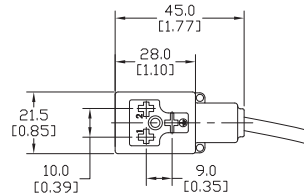
Please note: The above parts are not compatible with the AVP and AVS series valves, which have 11mm DIN plugs.

Last digit in part number denotes cable length in meters.

Solenoid Valve Cables and Connectors

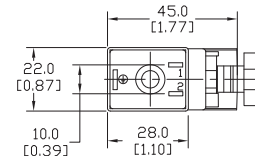
10mm Connectors

Dimensions shown
mm [inches]



Height = 30mm [1.18in]

Connector with Cable



Height = 41mm [1.61in]

Field Wireable Connector

10mm (3-pole) Connectors (per DIN 43650 Form B)

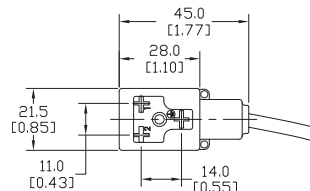
Part No.	Price	Voltage (AC/DC)	Current Rating	IP Rating	Wire Size	Cable Dia. (in.)	LED	Surge Protection	Wiring Figure	Screw Size/Torque	Weight (lbs)	Agency Approval
SC10-LS24-3	<--->	24 ±20%	max 4A	67	18 AWG	0.23	yes	zener diode (D-Z DO-15 47V 2W)	10	m3-0.5x30mm/ 0.4 Nm (3.5 in lb)	0.43	CSA (080128-0-000)
SC10-LS24-5	<--->										0.68	
SC10-LS110-3	<--->	110 ±10%	max 1A					zener diode (D-Z DO-41 ZY200 2W)	6		0.43	
SC10-LS110-5	<--->										0.68	
SC10-3	<--->	230	max 10A					none	3		0.43	
SC10-5	<--->										0.68	
SC10-LS24-0	<--->	24 ±20%	max 4A	65	Solid 12 AWG Stranded 14 AWG w/Ferrule 16 AWG	gland size 0.24 to 0.32	yes	zener diode (D-Z DO-15 47V 2W)	4	m3-0.5x42mm/ 0.5 Nm (4.4 in lb)	0.07	none
SC10-LS110-0	<--->	110 ±10%	max 1A					mov (SIOV S10 K130)	5		0.07	
SC10-0	<--->	230	max 10A					none	9		0.06	

Please note: The above parts are not compatible with the AVP and AVS series valves, which have 11mm DIN plugs.

Last digit in part number denotes cable length in meters, a 0 indicates field termination.

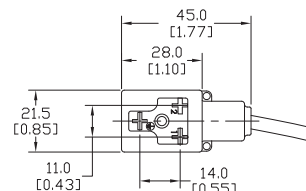
11mm Connectors

Dimensions shown
mm [inches]



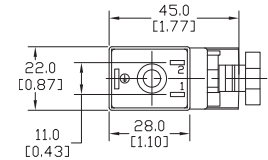
Height = 30mm [1.18in]

Connector with Cable



Height = 30mm [1.18in]

Reverse Connector with Cable



Height = 41mm [1.61in]

Field Wireable Connector

11mm (3-pole) Connectors (DIN Style, Form B Industrial)

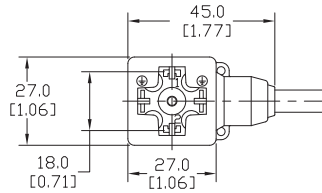
Part No.	Price	Voltage (AC/DC)	Current Rating	IP Rating	Wire Size	Cable Dia. (in.)	LED	Surge Protection	Wiring Figure	Screw Size/Torque	Weight (lbs)	Agency Approval
SC11-LS24-3	<--->	24 ±20%	max 4A	67	18 AWG	0.23	yes	zener diode (D-Z DO-15 47V 2W)	10	m3-0.5x30mm/ 0.4 Nm (3.5 in lb)	0.44	CSA (080128-0-000)
SC11-LS24-5	<--->										0.67	
SC11-LS110-3	<--->	110 ±10%	max 1A					zener diode (D-Z DO-41 ZY200 2W)	6		0.44	
SC11-LS110-5	<--->										0.67	
SC11-LS24-3R	<--->	24 ±20%	max 4A					zener diode (D-Z DO-15 47V 2W)	10		0.44	
SC11-LS24-5R	<--->										0.67	
SC11-LS110-3R	<--->	110 ±10%	max 1A	zener diode (D-Z DO-41 ZY200 2W)	6	0.44						
SC11-LS110-5R	<--->					0.67						
SC11-3	<--->	230	max 10A	none	3	0.44						
SC11-5	<--->					0.67						
SC11-LS24-0	<--->	24 ±20%	max 4A	65	Solid 12 AWG Stranded 14 AWG w/Ferrule 16 AWG	gland size 0.24 to 0.32	yes	zener diode (D-Z DO-15 47V 2W)	4	m3-0.5x42mm/ 0.5 Nm (4.4 in lb)	0.07	none
SC11-LS110-0	<--->	110 ±10%	max 1A					mov (SIOV S10 K130)	5		0.07	
SC11-0	<--->	230	max 10A					none	9		0.07	

Last digit in part number denotes cable length in meters, a 0 indicates field termination.

Solenoid Valve Cables and Connectors

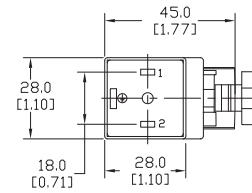
18mm Connectors

Dimensions shown
mm [inches]



Height = 30mm [1.18in]

Connector with Cable



Height = 41mm [1.61in]

Field Wireable Connector

18mm (3-pole) Connectors (per DIN 43650 Form A)

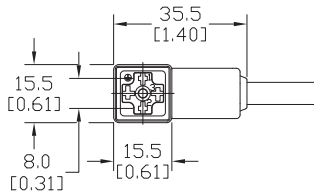
Part No.	Price	Voltage (AC/DC)	Current Rating	IP Rating	Wire Size	Cable Dia. (in.)	LED	Surge Protection	Wiring Figure	Screw Size/ Torque	Weight (lbs)	Agency Approval						
SC18-LS24-3	<-->	24 ±20%	max 4A	67	18 AWG	0.23	yes	zener diode (D-Z DO-15 47V 2W)	7	m3-0.5x30mm/ 0.4 Nm (3.5 in lb)	0.44	CSA (080128-0-000)						
SC18-LS24-5	<-->										0.69							
SC18-LS110-3	<-->	110 ±10%	max 1A				65	Solid 12 AWG Stranded 14 AWG w/Ferrule 16 AWG			yes		zener diode (D-Z DO-41 ZY200 2W)	4	m3-0.5x42mm/ 0.5 Nm (4.4 in lb)	0.44	none	
SC18-LS110-5	<-->															0.69		
SC18-3	<-->	230	max 10A				65	Solid 12 AWG Stranded 14 AWG w/Ferrule 16 AWG			no		none	2	m3-0.5x42mm/ 0.5 Nm (4.4 in lb)	0.44		none
SC18-5	<-->															0.69		
SC18-LS24-0	<-->	24 ±20%	max 4A	65	Solid 12 AWG Stranded 14 AWG w/Ferrule 16 AWG	yes	zener diode (D-Z DO-15 47V 2W)	5	m3-0.5x42mm/ 0.5 Nm (4.4 in lb)	0.07	none							
SC18-LS110-0	<-->	110 ±10%	max 1A							0.07								
SC18-0	<-->	230	max 10A							0.07								

Please note: The above parts are not compatible with the AVP and AVS series valves, which have 11mm DIN plugs.

Last digit in part number denotes cable length in meters, a 0 indicates field termination.

8mm Transmitter Connector

Dimensions shown
mm [inches]



Height = 25mm [0.98in]

Connector with Cable

8mm (4-pole) Connectors (per DIN 43650 Form C)

Part No.	Price	Voltage (AC/DC)	Current Rating	IP Rating	Wire Size	Cable Dia. (in.)	LED	Surge Protection	Wiring Figure	Screw Size/ Torque	Weight (lbs)	Agency Approval
SC8-5T	<-->	230	max 6A	67	18 AWG	0.26	yes	none	8	m3-0.5x42mm/ 0.5 Nm (4.4 in lb)	0.80	CSA (080128-0-000)

Last digit in part number denotes cable length in meters, a 0 indicates field termination.

Solenoid Valve Cables and Connectors Wiring Diagrams

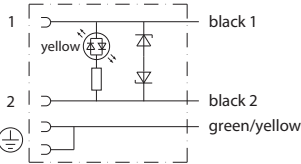


Figure No. 1

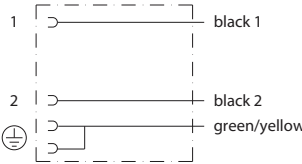


Figure No. 2

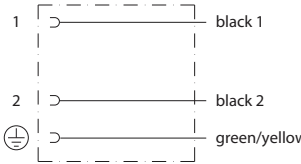


Figure No. 3

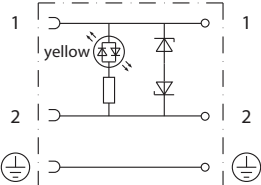


Figure No. 4

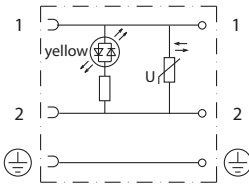


Figure No. 5

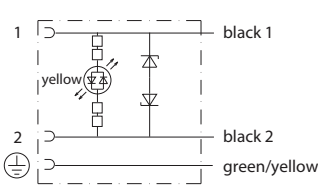


Figure No. 6

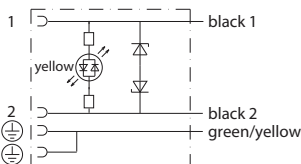


Figure No. 7

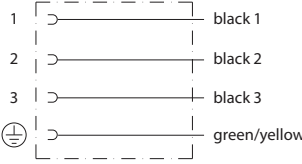


Figure No. 8

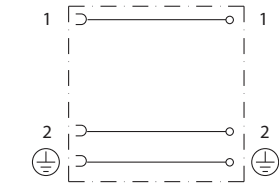


Figure No. 9

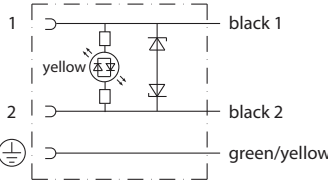


Figure No. 10

NITRA™ exhaust silencers are available in three styles and nine popular NPT and BSPT sizes. Add these to the exhaust ports of NITRA directional control solenoid valves to reduce noise.



SBC Series



SBF Series

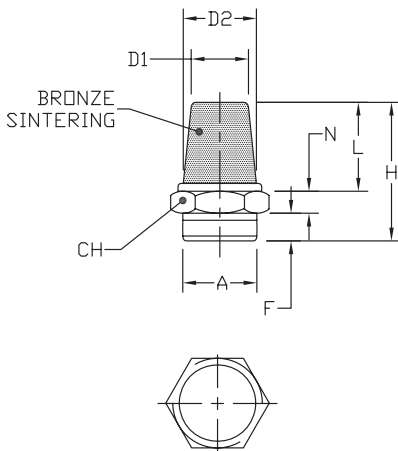


SPL Series

Features

- Inch and metric sizes available
- Bronze cone and flat styles
- Plastic cylindrical
- Maximum pressure = 150 psi

SBC Silencers



NITRA™ Bronze Cone Silencers											
Inch Sizes - dimensions in inches [mm]											
Part No.	Price	A	CH	D1	D2	F	H	L	N	Package Weight (lbs)	Qty. per pack
SBC-18N	<--->	MNPT 1/8	0.47 [12.0]	0.32 [8.0]	0.28 [7.0]	0.24 [6.0]	0.94 [24.0]	0.55 [14.0]	0.16 [4.0]	0.01	2
SBC-14N	<--->	MNPT 1/4	0.63 [16.0]	0.47 [12.0]	0.40 [10.0]	0.32 [8.0]	1.18 [30.0]	0.71 [18.0]	0.16 [4.0]	0.01	
SBC-38N	<--->	MNPT 3/8	0.71 [18.0]	0.55 [14.0]	0.39 [11.0]	0.35 [9.0]	1.38 [35.0]	0.83 [21.0]	0.197 [5.0]	0.05	
SBC-12N	<--->	MNPT 1/2	0.94 [24.0]	0.75 [19.0]	0.59 [15.0]	0.40 [10.0]	1.73 [44.0]	1.10 [28.0]	0.24 [6.0]	0.15	
Metric Sizes - dimensions in inches [mm]											
SBC-M5	<--->	M5	0.31 [8.0]	0.20 [5.0]	0.16 [4.0]	0.20 [5.0]	0.79 [20.0]	0.47 [12.0]	0.12 [3.0]	0.01	2
SBC-18R	<--->	R 1/8	0.47 [12.0]	0.32 [8.0]	0.28 [7.0]	0.24 [6.0]	0.94 [24.0]	0.55 [14.0]	0.16 [4.0]	0.01	
SBC-14R	<--->	R 1/4	0.63 [16.0]	0.47 [12.0]	0.40 [10.0]	0.32 [8.0]	1.18 [30.0]	0.71 [18.0]	0.16 [4.0]	0.01	
SBC-38R	<--->	R 3/8	0.71 [18.0]	0.55 [14.0]	0.39 [11.0]	0.35 [9.0]	1.38 [35.0]	0.83 [21.0]	0.197 [5.0]	0.05	
SBC-12R	<--->	R 1/2	0.94 [24.0]	0.75 [19.0]	0.59 [15.0]	0.40 [10.0]	1.73 [44.0]	1.10 [28.0]	0.24 [6.0]	0.15	

Flow Characteristics

Bronze Cone Silencers

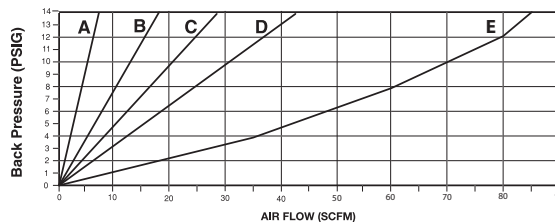
A: SBC-M5

B: SBC-18N; SBC-18R

C: SBC-14N; SBC-14R

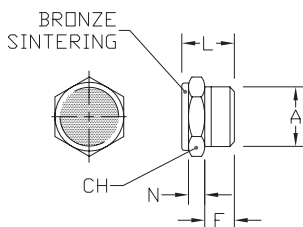
D: SBC-38N; SBC-38R

E: SBC-12N; SBC-12R



Noise Elimination = > 20db
Filtered Element = 40 micron

SBF Silencers

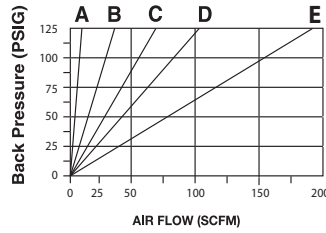


NITRA™ Bronze Flat Silencers											
Inch Sizes - dimensions in inches [mm]											
Part No.	Price	A	CH	F	L	N	Package Weight (lbs)	Qty. per pack			
SBF-18N	<--->	MNPT 1/8	0.47 [12.0]	0.24 [6.0]	0.47 [12.0]	0.16 [4.0]	0.01	2			
SBF-14N	<--->	MNPT 1/4	0.67 [17.0]	0.32 [8.0]	0.59 [15.0]	0.16 [4.0]	0.01				
SBF-38N	<--->	MNPT 3/8	0.75 [19.0]	0.35 [9.0]	0.67 [17.0]	0.20 [5.0]	0.05				
SBF-12N	<--->	MNPT 1/2	0.94 [24.0]	0.40 [10.0]	0.71 [18.0]	0.24 [6.0]	0.15				
Metric Sizes - dimensions in inches [mm]											
SBF-M5	<--->	M5	0.31 [8.0]	0.20 [5.0]	0.35 [9.0]	0.12 [3.0]	0.01	2			
SBF-18R	<--->	R 1/8	0.47 [12.0]	0.24 [6.0]	0.47 [12.0]	0.16 [4.0]	0.01				
SBF-14R	<--->	R 1/4	0.67 [17.0]	0.32 [8.0]	0.59 [15.0]	0.16 [4.0]	0.01				
SBF-38R	<--->	R 3/8	0.75 [19.0]	0.35 [9.0]	0.67 [17.0]	0.20 [5.0]	0.05				
SBF-12R	<--->	R 1/2	0.94 [24.0]	0.40 [10.0]	0.71 [18.0]	0.24 [6.0]	0.15				

Flow Characteristics

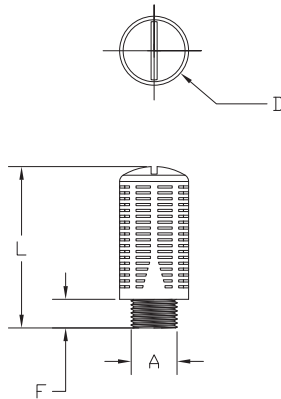
Bronze Flat Silencers

- A: SBF-M5
- B: SBF-18N; SBF-18R
- C: SBF-14N; SBF-14R
- D: SBF-28N; SBF-38R
- E: SBF-12N; SBF-12R



Noise Elimination = > 30db
Filtered Element = 40 micron

SPL Silencers



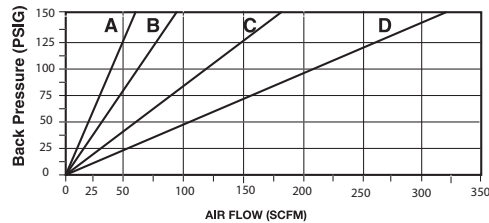
Note: SPL series plastic exhaust silencers have a maximum pressure of 150 PSI.

NITRA™ Plastic Exhaust Silencers							
Inch Sizes - dimensions in inches [mm]							
Part No.	Price	A	D	L	F	Package Weight (lbs)	Qty. per pack
SPL-18N	<--->	MNPT 1/8	0.55 [13.8]	1.28 [32.4]	0.33 [8.3]	0.02	2
SPL-14N	<--->	MNPT 1/4	0.68 [17.3]	1.68 [42.5]	0.39 [9.9]	0.03	
SPL-38N	<--->	MNPT 3/8	0.87 [22.0]	2.10 [53.4]	0.40 [10.0]	0.06	
SPL-12N	<--->	MNPT 1/2	1.00 [25.4]	2.66 [67.6]	0.44 [11.1]	0.08	
Metric Sizes - dimensions in inches [mm]							
SPL-18R	<--->	R 1/8	0.60 [15.2]	1.33 [33.7]	0.24 [6.1]	0.02	2
SPL-14R	<--->	R 1/4	0.60 [18.8]	1.60 [40.6]	0.31 [7.7]	0.03	
SPL-38R	<--->	R 3/8	0.94 [24.0]	2.20 [55.9]	0.39 [9.9]	0.06	
SPL-12R	<--->	R 1/2	0.94 [24.0]	2.20 [55.9]	0.39 [9.9]	0.08	

Flow Characteristics

Plastic Silencers

- A: SPL-18N; SPL-18R
- B: SPL-14N; SPL-14R
- C: SPL-38N; SPL-38R
- D: SPL-12N; SPL-12R



Noise Elimination = > 30db
Filtered Element = 40 micron