

NITRA pneumatic push-to-connect union tee reducer fitting with thermoplastic (PBT) body and stainless steel tube gripping claws. For use with polyurethane or nylon tubing. Five fittings per package.



Inch Fitting

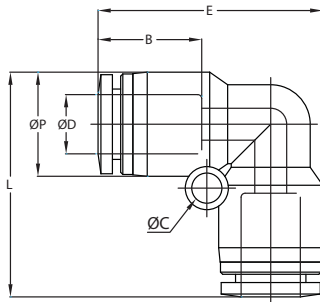


Metric Fitting

| NITRA™ Union Tee Reducer | | | | | | | | | | | | | | | | |
|---|-------|--------------------|-----|------|------|------|------|------|------|------|------|------|------|---------|----------------------|---------------|
| Inch Sizes - dimensions in inches (in.) | | | | | | | | | | | | | | | | |
| Part No. | Price | Size | ØD1 | ØD2 | ØP1 | ØP2 | L | E | ØC | B1 | B2 | M1 | M2 | Orifice | Package Weight (lbs) | Qty. per pack |
| UTR14-532 | <--> | 1/4 in. x 5/32 in. | 1/4 | 5/32 | 0.51 | 0.41 | 1.04 | 1.60 | 0.17 | 0.66 | 0.59 | 0.32 | 0.57 | 0.13 | 0.2 | 5 |
| UTR38-14 | <--> | 3/8 in. x 1/4 in. | 3/8 | 1/4 | 0.69 | 0.51 | 1.26 | 1.90 | 0.18 | 0.79 | 0.66 | 0.43 | 0.69 | 0.20 | 0.3 | 5 |
| UTR12-38 | <--> | 1/2 in. x 3/8 in. | 1/2 | 3/8 | 0.83 | 0.69 | 1.44 | 2.30 | 0.18 | 0.90 | 0.79 | 0.50 | 0.87 | 0.31 | 0.4 | 5 |
| Metric Sizes - dimensions in millimeters (mm) | | | | | | | | | | | | | | | | |
| UTR6M-4M | <--> | 6 mm x 4 mm | 6 | 4 | 12.5 | 10.4 | 25.4 | 41.6 | 3.3 | 16.4 | 14.9 | 7.9 | 13.8 | 3.0 | 0.2 | 5 |
| UTR8M-6M | <--> | 8 mm x 6 mm | 8 | 6 | 14.8 | 12.5 | 29.3 | 46.1 | 4.5 | 18.7 | 16.4 | 9.6 | 17.0 | 5.0 | 0.4 | 5 |
| UTR10M-8M | <--> | 10 mm x 8 mm | 10 | 8 | 17.5 | 14.5 | 33.9 | 49.4 | 4.3 | 20.1 | 18.7 | 10.9 | 18.8 | 6.5 | 0.4 | 5 |
| UTR12M-10M | <--> | 12 mm x 10 mm | 12 | 10 | 20.5 | 17.5 | 37.6 | 56.1 | 4.3 | 22.8 | 20.1 | 12.4 | 21.9 | 8.0 | 0.4 | 5 |



Inch Fitting



NITRA pneumatic push-to-connect union elbow fitting with thermoplastic (PBT) body and stainless steel tube gripping claws. For use with polyurethane or nylon tubing. Five fittings per package.



Metric Fitting

| NITRA™ Union Elbow | | | | | | | | | | | | |
|---|-------|-----------------|------|------|------|------|------|------|---------|----------------------|---------------|--|
| Inch Sizes - dimensions in inches (in.) | | | | | | | | | | | | |
| Part No. | Price | Size | ØD | ØP | L | E | ØC | B | Orifice | Package Weight (lbs) | Qty. per pack | |
| UL532 | <--> | 5/32 in. [4 mm] | 5/32 | 0.41 | 0.95 | 0.95 | 0.13 | 0.59 | 0.12 | 0.1 | 5 | |
| UL14 | <--> | 1/4 in. | 1/4 | 0.51 | 1.09 | 1.09 | 0.14 | 0.66 | 0.19 | 0.1 | 5 | |
| UL38 | <--> | 3/8 in. | 3/8 | 0.69 | 1.35 | 1.35 | 0.18 | 0.79 | 0.31 | 0.3 | 5 | |
| UL12 | <--> | 1/2 in. | 1/2 | 0.83 | 1.60 | 1.60 | 0.18 | 0.90 | 0.35 | 0.4 | 5 | |
| Metric Sizes - dimensions in millimeters (mm) | | | | | | | | | | | | |
| UL6M | <--> | 6 mm | 6 | 12.5 | 27.3 | 27.3 | 4.3 | 16.4 | 5.0 | 0.2 | 5 | |
| UL8M | <--> | 8 mm | 8 | 14.5 | 31.3 | 31.3 | 4.3 | 18.7 | 7.0 | 0.2 | 5 | |
| UL10M | <--> | 10 mm | 10 | 17.5 | 33.9 | 33.9 | 4.3 | 20.1 | 8.0 | 0.4 | 5 | |
| UL12M | <--> | 12 mm | 12 | 20.5 | 38.8 | 38.8 | 4.3 | 22.8 | 10.0 | 0.4 | 5 | |