

NITRA pneumatic push-to-connect union tee reducer fitting with thermoplastic (PBT) body and stainless steel tube gripping claws. For use with polyurethane or nylon tubing. Five fittings per package.



Inch Fitting

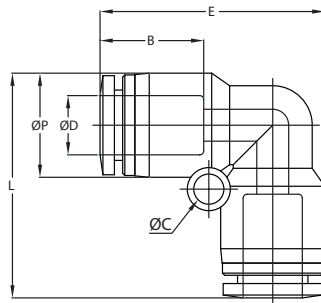


Metric Fitting

NITRA™ Union Tee Reducer																
Inch Sizes - dimensions in inches (in.)																
Part No.	Price	Size	ØD1	ØD2	ØP1	ØP2	L	E	ØC	B1	B2	M1	M2	Orifice	Package Weight (lbs)	Qty. per pack
UTR14-532	<--->	1/4 in. x 5/32 in.	1/4	5/32	0.51	0.41	1.04	1.60	0.17	0.66	0.59	0.32	0.57	0.13	0.2	5
UTR38-14	<--->	3/8 in. x 1/4 in.	3/8	1/4	0.69	0.51	1.26	1.90	0.18	0.79	0.66	0.43	0.69	0.20	0.3	5
UTR12-38	<--->	1/2 in. x 3/8 in.	1/2	3/8	0.83	0.69	1.44	2.30	0.18	0.90	0.79	0.50	0.87	0.31	0.4	5
Metric Sizes - dimensions in millimeters (mm)																
UTR6M-4M	<--->	6 mm x 4 mm	6	4	12.5	10.4	25.4	41.6	3.3	16.4	14.9	7.9	13.8	3.0	0.2	5
UTR8M-6M	<--->	8 mm x 6 mm	8	6	14.8	12.5	29.3	46.1	4.5	18.7	16.4	9.6	17.0	5.0	0.4	5
UTR10M-8M	<--->	10 mm x 8 mm	10	8	17.5	14.5	33.9	49.4	4.3	20.1	18.7	10.9	18.8	6.5	0.4	5
UTR12M-10M	<--->	12 mm x 10 mm	12	10	20.5	17.5	37.6	56.1	4.3	22.8	20.1	12.4	21.9	8.0	0.4	5



Inch Fitting



NITRA pneumatic push-to-connect union elbow fitting with thermoplastic (PBT) body and stainless steel tube gripping claws. For use with polyurethane or nylon tubing. Five fittings per package.



Metric Fitting

NITRA™ Union Elbow											
Inch Sizes - dimensions in inches (in.)											
Part No.	Price	Size	ØD	ØP	L	E	ØC	B	Orifice	Package Weight (lbs)	Qty. per pack
UL532	<--->	5/32 in. [4 mm]	5/32	0.41	0.95	0.95	0.13	0.59	0.12	0.1	5
UL14	<--->	1/4 in.	1/4	0.51	1.09	1.09	0.14	0.66	0.19	0.1	5
UL38	<--->	3/8 in.	3/8	0.69	1.35	1.35	0.18	0.79	0.31	0.3	5
UL12	<--->	1/2 in.	1/2	0.83	1.60	1.60	0.18	0.90	0.35	0.4	5
Metric Sizes - dimensions in millimeters (mm)											
UL6M	<--->	6 mm	6	12.5	27.3	27.3	4.3	16.4	5.0	0.2	5
UL8M	<--->	8 mm	8	14.5	31.3	31.3	4.3	18.7	7.0	0.2	5
UL10M	<--->	10 mm	10	17.5	33.9	33.9	4.3	20.1	8.0	0.4	5
UL12M	<--->	12 mm	12	20.5	38.8	38.8	4.3	22.8	10.0	0.4	5