

C-more Touch Panels

Section 10



C-more Micro Touch Panels

Section 11



Optimates, DV-1000, LookoutDirect, and Industrial Monitors

Section 12



Atlas Industrial Monitors

Section 12



Table of Contents

OptiMate Panels Overview	12-2
OptiMate Panels Specifications	12-3
OptiMate 400/600 Series	12-4
OptiMate 1000 Series	12-5
OptiMate Accessories	12-6
OptiMate Cables	12-7
DirectView 1000	12-8
LookoutDirect Overview	12-10
LookoutDirect Features	12-12
DirectLOGIC PLUS	12-14
LookoutDirect System Requirements	12-15
ATLAS™ Industrial Monitors Overview	12-16
ATLAS™ LCD Monitors	12-18
ATLAS Monitor Accessories	12-25

Operator Interface



OptiMate Panels Overview



OP-400 Series



OP-600 Series



OP-1000 Series

Overview

Our OptiMate line offers another option for operator interface users. The units offer many features at a low cost.

You can connect the panels to your application by using the configuration software and ladder logic in your program.

Compatibility

OP-400 series, OP-600 series and OP-1000 series panels all work with DL05, DL06, DL105, DL205, DL305, DL405, Allen-Bradley SLC 5/03, 5/04, 5/05 and MicroLogix 1000/1200/1500 PLCs.

OP-1000 series panels and the OP-9001 also work with GE Fanuc Series 90 Micro, GE 90/30 Series (SNP) and Modbus RTU PLCs.

All panels require setup using our OP-WINEDIT configuration software. Simply choose the proper cable and particular type of CPU in our configuration software.

A single OP-400 series panel can be used with one CPU port, while single or multiple (up to 31 panels using an OP-9001 communications panel) OP-600 and OP-1000 series panels can be used with one CPU port.

Choosing the right panel

The following pages show a quick summary of our OptiMate operator interface panels and the key features associated with them. Here are a few helpful hints to consider as you're reviewing the features:

Do you need just a simple message display? If so, look at the OP-420, OP-440, OP-620 or OP-640.

Do you need pushbuttons or panel lamps without message capability? Then look at the OP-406, OP-609, OP-613, OP-1124(-1), OP-1224 or OP-1212.

Do you need a simple setpoint panel? If so, check out the OP-413, OP-414, OP-613, or OP-1312.

Do you need programmable function keys and a display? Then look at the OP-420, OP-620, OP-640, OP-1500 or OP-1510.

OptiMate Panels Specifications

Company Information

Systems Overview

Programmable Controllers

Field I/O

Software

C-more & other HMI

Drives

Soft Starters

Motors & Gearbox

Steppers/ Servos

Motor Controls

Proximity Sensors

Photo Sensors

Limit Switches

Encoders

Current Sensors

Pressure Sensors

Temperature Sensors

Pushbuttons/ Lights

Process

Relays/ Timers

Comm.

Terminal Blocks & Wiring

Power

Circuit Protection

Enclosures

Tools

Pneumatics

Safety

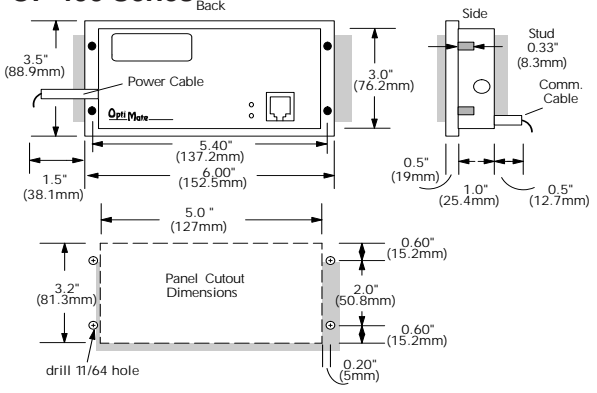
Appendix

Product Index

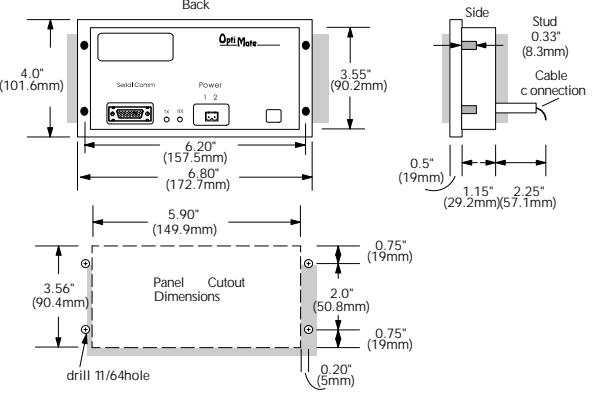
Part # Index

OptiMate Panel Specifications				
Specifications	OP-400 Series	OP-600 Series	OP-1000 Series	OP-9001
Units per CPU	One per port	1 or multiple (up to 31 with OP-9001)	1 or multiple (up to 31 with OP-9001)	One per port
Service Power (Input)	5VDC	8-30VDC		8-30VDC
Power Consumption	OP-406 0.25W @ 5VDC OP-413 0.80W @ 5VDC OP-414 0.85W @ 5VDC OP-420 0.58W @ 5VDC OP-440 0.75W @ 5VDC	OP-609 2.4W @ 8-30VDC OP-613 3 W @ 8-30VDC	OP-1124 10W @ 8-30VDC OP-1212 7W @ 8-30VDC OP-1224 4W @ 8-30VDC	3.85W @ 8-30VDC
In-Rush Current	.35-.44A for 1ms	1.5-2.0A for 2ms max.		n/a
Serial Communication	PLC port RS-232 RJ12	PLC Port RS-232/422 15 pin D-sub (female)		One-RS-232/422 to PLC Two-RS-422 to OP panels (3 DB15 female)
Max. Cable Length	RS-232: 50ft	RS-232: 50ft. RS-422/OP-9001: 4000ft		4000ft. shielded cable 30ft. ribbon cable
Configuration Software	OP-WINEDIT			
Environmental Specifications				
Enclosure	NEMA 4			
Agency Approval	UL (file #E182843), CUL, CE			
Operating Temperature	32 to 122°F (0 to 50°C)			
Storage Temperature	-4 to 158°F (-20 to 70°C)			
Humidity	10-95% R.H. (non-condensing)			

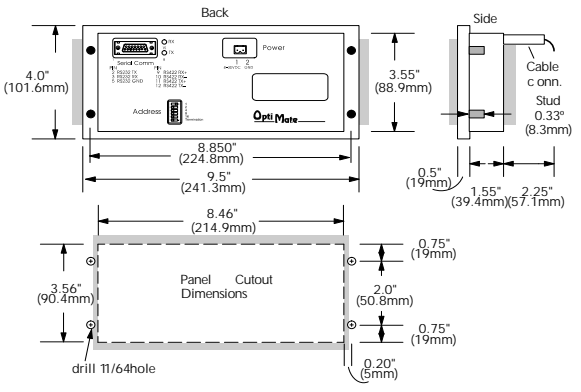
OP-400 Series



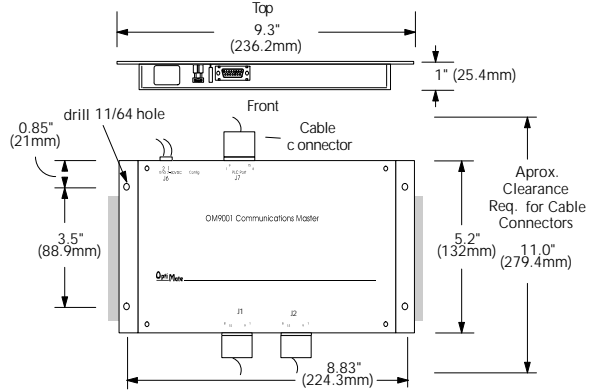
OP-600 Series



OP-1000 Series



OP-9001



OptiMate 400/600 Series

OP-406 <--->

Indicator/pushbutton panel

- Four User-defined function keys with LED indicators
- Six LED annunciator lamps



OP-413 <--->

Setpoint/display panel

- Read/write six PLC data registers with a bank of data locations
- Four-digit numeric display
- Make setpoint adjustments by using select button and arrows to change values



OP-414 <--->

Setpoint/display panel

- Read/write six PLC data registers with a bank of data locations
- Eight-digit numeric display, allows BCD double operations
- Make setpoint adjustments by using select button and arrows to change values



OP-420 <--->

Operator panel

- 2x20 character LCD display
- Four function keys with LEDs
- Display up to 160 pre-defined messages which reside in the panel's memory



OP-440 <--->

4-line display panel

- 4x20 character LCD display with the ability to display text, BCD double, binary and floating-point numbers
- Display up to 160 predefined messages which reside in the panel's memory



OP-PS400 <--->

Power Supply

- External 5 VDC power supply for OP-400 series panels
- Plugs into standard 120 VAC receptacle

OP-609 <--->

Combination panel

- Nine user-defined function keys with LED indicators
- Six LED annunciator lamps



OP-613 <--->

Setpoint/display panel

- Read/write 4 PLC data registers with a bank of data locations
- Four-digit numeric display
- Make setpoint adjustments by using select button and arrows to change values
- Four user-defined function keys with LED indicators
- Two LED annunciator lamps



OP-620 <--->

Operator panel

- 2x20 character LCD display
- Five function keys with LED indicators
- Five control keys with menu tree capability
- Display up to 160 pre-defined messages which reside in panel's memory



OP-640 <--->

4-Line display panel

- 4x20 character LCD display with the ability to display text, BCD double, binary and floating point numbers
- Five function keys
- Three LED annunciator lamps
- Display up to 160 predefined messages, which reside in panel memory



Note: OP-PS400 is required for panel configuration and operation of all OP-400 series panels. Do not power from PLC communications port.

OptiMate 1000 Series

OP-1124



Annunciator panel

- 24 high-intensity LED annunciator lamps
- Interchangeable colors (red, green, yellow)
- Create custom labels
- OP-1124-1 (<--->) comes with one row each of red, yellow and green light bars already installed



OP-1224



Pushbutton panel

- 24 individual pushbuttons with LED indicators
- Create custom labels



OP-1212



Combination panel

- 12 high-intensity LED annunciator lamps
- Interchangeable colors (red, green, yellow)
- 12 pushbuttons with LED indicators
- Create custom labels



OP-1312



Setpoint/display panel

- Read/Write 12 PLC data registers with 3 banks of four data locations, each with a 4-digit display
- Create custom labels
- Three control keys for each bank of data locations
- Make setpoint changes using the arrow control keys



OP-1500/OP-1510



Operator panel

- 2x20 character LCD display
- Full numeric keypad
- Five function keys with LED status (OP-1510 uses 3 for menu functions)
- Three LED annunciator lamps
- Build and store up to 160 messages in the unit
- Menu capability (OP-1510)



OptiMate Accessories

OP-9001

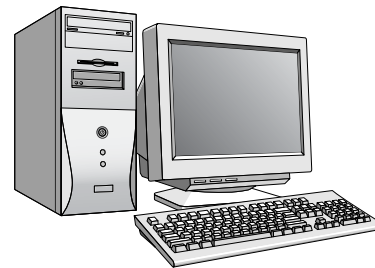
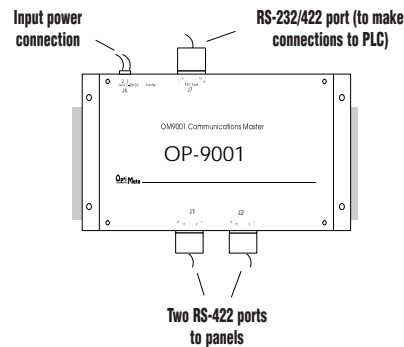
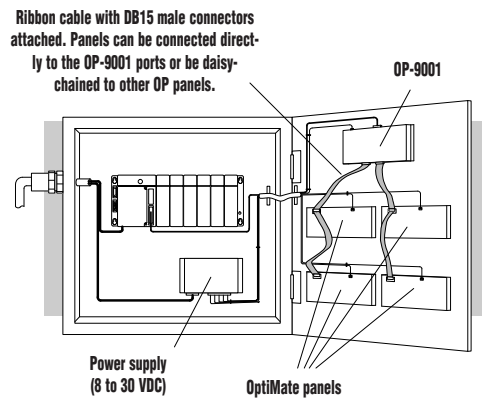


Communications master

The OP-9001 is a communication master unit for connecting two or more (up to 31) OP-600 and OP-1000 series OptiMate panels to a single CPU communications port. It connects to any **DirectLOGIC**, Allen-Bradley 5/03, 5/04, GE Series 90/30, GE Series 90 Micro, and Modicon (Modbus RTU) CPU.

Note: The OP-9001 cannot be used with OP400 series panels.

The adjacent figure is a typical multi-drop arrangement using an OP-9001 connected to four OptiMate Panels. The OP-9001 is surface-mounted to the cabinet. Notice the adequate space available to route cables and allow for proper clearance. All the panels are configured using OP-WINEDIT software.



OP-WINEDIT



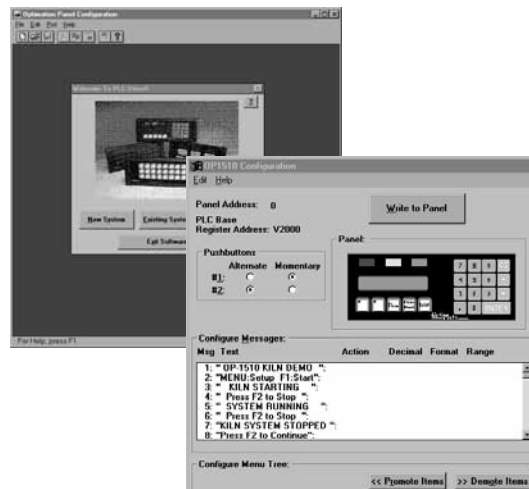
Configuration software

All of the OptiMate panels (including the OP-9001 communication master) are configured using the OptiMate OP-WINEDIT configuration software.

OP-WINEDIT software is compatible with computers running Windows 95/98/2000/NT/XP.

Simply load the software onto your personal computer. The simple setup instructions are described in the supplied manual and in the built-in HELP screens. The software allows setup of your complete panel applications, including the type of PLC being used, communications protocol, type of panel (or panels) being used, and in some cases, the format of the message text for the LCD display. Some panels even include the ability to design a menu tree. The setup steps are similar for all OptiMate panels. Use cable OP-CCBL to connect a PC to OP-400 series panels, or OP-ACBL-1 to connect to OP-600 or OP-1000.

Note: When using the OptiMate 600 series panels (except for the OP-640), OP-WINEDIT software version 2.0 or later is required. When using the OptiMate 400 series panels or the OP-640, version 2.3 or later is required.



OptiMate Cables

Cables for OptiMate Panel-to-PLC Connection				
PLC Family	CPU (or other device)	CPU Port	Cables for 600/1000 Series	Cables for 400 Series
DirectLOGIC™ DL05	DL05: D0-05	Port 1	OP-2CBL	OP-2CBL-2
		Port 2	OP-2CBL	OP-2CBL-2
DirectLOGIC™ DL06	DL06: D0-06	Port 1	OP-2CBL	OP-2CBL-2
		Port 2	OP-2CBL-1	not available***
DirectLOGIC™ DL105	DL105: F1-130	Only one	OP-2CBL	OP-2CBL-2
DirectLOGIC™ DL205	D2-230	Only one	OP-2CBL	OP-2CBL-2
		Top port	OP-2CBL	OP-2CBL-2
	D2-240	Bottom port	OP-2CBL	OP-2CBL-2
		Top port	OP-2CBL	OP-2CBL-2
	D2-250-1 D2-260	Bottom port	OP-2CBL-1	not available***
D2-DCM (module)	Only one	OP-4CBL-2	not available***	
DirectLOGIC™ DL305	D3-330	Requires DCU*	OP-4CBL-2	not available***
		Requires DCU*	OP-4CBL-2	not available***
	D3-340	Top port	OP-3CBL	OP-3CBL-1
		Bottom port	OP-3CBL	OP-3CBL-1
	D3-350	Top port	OP-2CBL	OP-2CBL-2
Bottom port		OP-4CBL-2	not available***	
DirectLOGIC™ DL405	D4-430	Top port (15-pin)	OP-4CBL-1	OP-4CBL-3
		Bottom port (25-pin)	OP-4CBL-2	not available***
	D4-440	Top port	OP-4CBL-1	OP-4CBL-3
		Bottom port	OP-4CBL-2	not available***
	D4-450	Phone jack	OP-2CBL	OP-2CBL-2
		Top port (15-pin)	OP-4CBL-1	OP-4CBL-3
	D4-DCM (module)	Bottom port (25-pin)	OP-4CBL-2	not available***
		Only one	OP-4CBL-2	not available***
Slice I/O panels	Only one	OP-4CBL-1	OP-4CBL-3	
GE® Series 1	IC610CPU105, 106	Requires DCU*	OP-4CBL-2	not available***
GE® Series 90/30	All models (311-351)	RS422 serial port	not available***	not applicable
GE® Fanuc™ Series 90 Micro	All models	RS422 Serial port	not available***	not applicable
MODICON	ModBus	RJ45 port	OP-MCBL-1**	not applicable
T1305™/ SIMATIC® T1305™	325-07, PPX:325-07	Requires DCU*	OP-4CBL-2	not available***
	330-37, PPX:330-37	Requires DCU*	OP-4CBL-2	not available***
	325S-07 (or 325 w/Stage Kit)	Requires DCU*	OP-4CBL-2	not available***
	330S-37, PPX:330S-37	Requires DCU*	OP-4CBL-2	not available***
	335-37, PPX:335-37	Only one	OP-3CBL	OP-3CBL-1
		If DCU is used*	OP-4CBL-2	not available***
T1405™/ SIMATIC® T1405™	425-CPU, PPX:425-CPU	Only one	OP-4CBL-1	OP-4CBL-3
	430-CPU, PPX:430-CPU	Top port (15-pin)	OP-4CBL-1	OP-4CBL-3
		Bottom port (25-pin)	OP-4CBL-2	not available***
	435-CPU, PPX:435-CPU	Top port (15-pin)	OP-4CBL-1	OP-4CBL-3
		Bottom port (25-pin)	OP-4CBL-2	not available***
Smart Slice™ I/O panels	Only one	OP-4CBL-1	OP-4CBL-3	
Allen-Bradley™ SLC 500	5/03 5/04	Bottom port	OP-ACBL-1	OP-ACBL-3
	MicroLogix 1000/1200/1500	Only one	OP-ACBL-2	OP-ACBL-4

* Requires RS-232 Data Communications Unit (D3-232-DCU)

** 1000 series panels only

*** Cables for connecting to these ports must be built by the user. Pinout diagrams are in the OptiMate panel user manual or online.