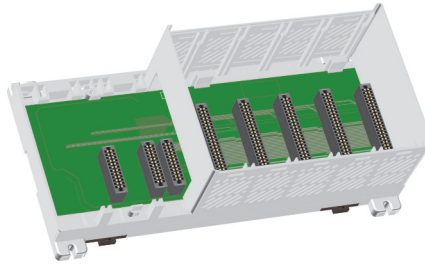


# Productivity3000 Overview

## Bases

Four bases are available, with 3, 5, 8, and 11 slots.



Productivity3000 Bases		
Part Number	Description	Price
<b>P3-03B</b>	3-slot base	<--->
<b>P3-05B</b>	5-slot base	<--->
<b>P3-08B</b>	8-slot base	<--->
<b>P3-11B</b>	11-slot base	<--->

## Power Supplies

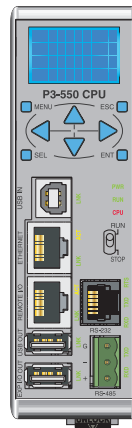
Two power supplies are available; one accepts AC input and one accepts DC input.



Productivity3000 Power Supplies		
Part Number	Description	Price
<b>P3-01AC</b>	Power supply (powered from AC source)	<--->
<b>P3-01DC</b>	Power supply (powered from DC source)	<--->

## CPU Module

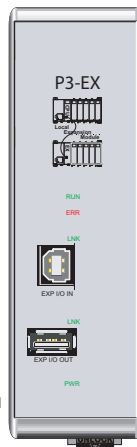
One CPU module is currently available.



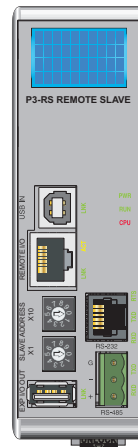
Productivity3000 CPU Module		
Part Number	Description	Price
<b>P3-550</b>	CPU module	<--->

## Expansion and Remote Slave Modules

One local expansion module and one remote slave module are available.



**P3-EX**  
Expansion  
Module



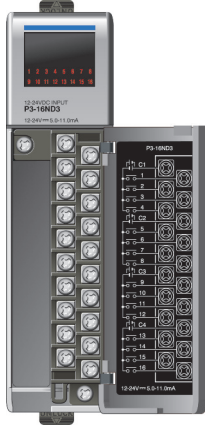
**P3-RS**  
Remote  
Slave Module

Productivity3000 Expansion, Remote Slave Modules		
Part Number	Description	Price
<b>P3-EX</b>	Expansion module	<--->
<b>P3-RS</b>	Remote slave module	<--->

# Productivity3000 Overview

## Discrete I/O Modules

Seven discrete input and fourteen discrete output modules are available.

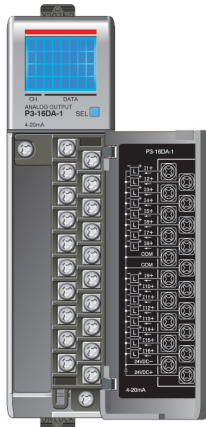


Discrete Input Modules		
Part Number	Description	Price
<b>P3-16SIM</b>	Input Simulator	<-->
<b>P3-08ND3S</b>	Isolated Sinking/Sourcing Input	<-->
<b>P3-16ND3</b>	Sinking/Sourcing DC Input	<-->
<b>P3-32ND3</b>	Sinking/Sourcing Input	<-->
<b>P3-64ND3</b>	Sinking/Sourcing Input	<-->
<b>P3-08NAS</b>	Isolated AC Input	<-->
<b>P3-16NA</b>	AC input	<-->

Discrete Output Modules		
Part Number	Description	Price
<b>P3-08TD1S</b>	Isolated Sinking Output	<-->
<b>P3-08TD2S</b>	Isolated Sourcing Output	<-->
<b>P3-16TD1</b>	Sinking Output	<-->
<b>P3-16TD2</b>	Sourcing Output	<-->
<b>P3-32TD1</b>	Sinking Output	<-->
<b>P3-32TD2</b>	Sourcing Output	<-->
<b>P3-64TD1</b>	Sinking Output	<-->
<b>P3-64TD2</b>	Sourcing Output	<-->
<b>P3-08TAS</b>	Isolated AC Out	<-->
<b>P3-16TA</b>	AC Output	<-->
<b>P3-08TRS</b>	Isolated Relay Output	<-->
<b>P3-08TRS-1</b>	Isolated Relay Output	<-->
<b>P3-16TR</b>	Relay Output	<-->
<b>P3-16TD3P</b>	Sinking/Sourcing Protected Output	<-->

## Analog I/O Modules

Six analog input, seven analog output, and two analog input/output modules are available.



Analog Input Modules		
Part Number	Description	Price
<b>P3-04ADS</b>	Isolated Analog Input	<-->
<b>P3-08AD</b>	Analog Input	<-->
<b>P3-16AD-1</b>	Analog Current Input	<-->
<b>P3-16AD-2</b>	Analog Voltage Input	<-->
<b>P3-08RTD</b>	Analog RTD Input	<-->
<b>P3-08THM</b>	Analog Thermocouple	<-->

Analog Output Modules		
Part Number	Description	Price
<b>P3-04DA</b>	Analog Output	<-->
<b>P3-08DA-1</b>	Analog Current Output	<-->
<b>P3-08DA-2</b>	Analog Voltage Output	<-->
<b>P3-06DAS-1</b>	Isolated Analog Current Output	<-->
<b>P3-06DAS-2</b>	Isolated Analog Voltage Output	<-->
<b>P3-16DA-1</b>	Analog Current Output	<-->
<b>P3-16DA-2</b>	Analog Voltage Output	<-->

Analog Input/Output Modules		
Part Number	Description	Price
<b>P3-8AD4DA-1</b>	Analog Input/Output	<-->
<b>P3-8AD4DA-2</b>	Analog Input/Output	<-->

## Specialty Modules

The two specialty modules available are the high-speed input and high-speed output modules.



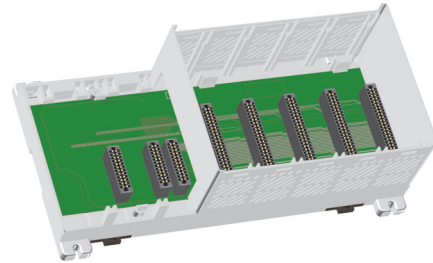
Specialty Modules		
Part Number	Description	Price
<b>P3-HSI</b>	High-Speed Input	<-->
<b>P3-HSO</b>	High-Speed Output	<-->

# Productivity3000 Overview

## What you'll need:

Of course, what you'll need for your system depends on your particular application, but this overview shows you what you'll need for a simple system.

### 1. Select your base.



### 2. Select a 24 VDC or 120 VAC power supply.



### 3. Order a P3-550 CPU module.

### 4. Order and install the Productivity Suite programming software in your PC.



### 5. Select and order your I/O modules.

At the same time, select and order your ZIPLink wiring system or removable terminal blocks.



### 6. Select your PC-to-PAC programming cable.

You will need a standard USB or Ethernet cable for programming, depending on whether you use the USB or Ethernet programming port on the P3-550 CPU.



### 7. Select tools, wire, and provide power.

Screwdriver  
DN-SS1



Wire Strippers  
DN-WS



Hookup Wire



# Programming Software

**P3-PGMSW FREE**  
(\$495 value)

Productivity Suite is user-friendly programming software designed to allow quick and easy programming of ladder logic programs for the Productivity3000 PAC.

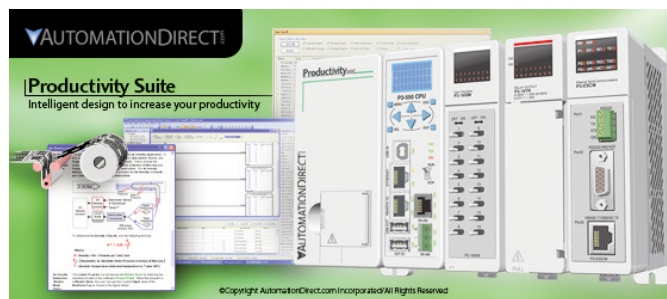
The online help file provides information that will help you get acquainted with the software quickly.



## PC Requirements

Productivity Suite programming software works with Windows® 2000 Service Pack 4, XP (Home or Professional), Vista (Home, Basic, Premium, 32 or 64-bit) or Windows 7 (Home, Professional, Ultimate, 32 or 64-bit). These are the minimum system requirements:

- Windows 2000 or XP Personal Computer with a 333 MHz or higher processor (CPU clock speed recommended; Intel Pentium/Celeron family or AMD K6/Athlon/Duron family, or compatible processor recommended)
- Vista or Windows 7 Personal Computer with a 800 MHz or higher processor (CPU clock speed recommended; Intel Pentium/Celeron family or AMD K6/Athlon/Duron family, or compatible processor recommended)
- SVGA 800x600 pixels resolution (1024x768 pixels resolution recommended)
- 300MB free hard-disk space
- Windows2000 or XP; 128MB free RAM (512MB recommended)
- Vista or Windows 7; 512MB free RAM (1GB recommended).
- CD-ROM or DVD drive for installing software from the CD
- USB or Ethernet port for project transfer to PAC



## Main window

The Main Window is displayed when the program opens. It is divided into Menus, Toolbars, and Windows that work together to make project development as simple as possible.

## Programming Cable

You will need a standard USB or Ethernet cable for programming, depending on whether you use the USB or Ethernet programming port on the P3-550 CPU.

We recommend using a USB programming cable; just plug it in and it works. We sell these A-to-B USB cables:

- USB-CBL-AB3 (3 ft.)
- USB-CBL-AB6 (6 ft.)
- USB-CBL-AB10 (10 ft.)
- USB-CBL-AB15 (15 ft.)

