

Wiring I/O Modules

There are two available methods for wiring most I/O modules: The ZIPLink wiring system or hand wiring to the optional removable I/O module terminal blocks.

Note: The high-density 32-point and 64-point I/O module design requires the use of the ZIPLink wiring system. Thermocouple and RTD modules are not compatible with the ZIPLink system and are shipped with the optional terminal blocks included.



ZIPLinks Wiring Systems

For wiring I/O modules, we strongly recommend using pre-wired ZIPLinks wiring systems, which eliminate the need for hand wiring modules to terminal blocks.

See the selection matrix on the following page.



ZIPLink Module



ZIPLink Pre-Wired Terminal Block Cable

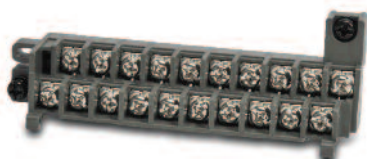


ZIPLink Pigtail Cable

Removable Terminal Blocks

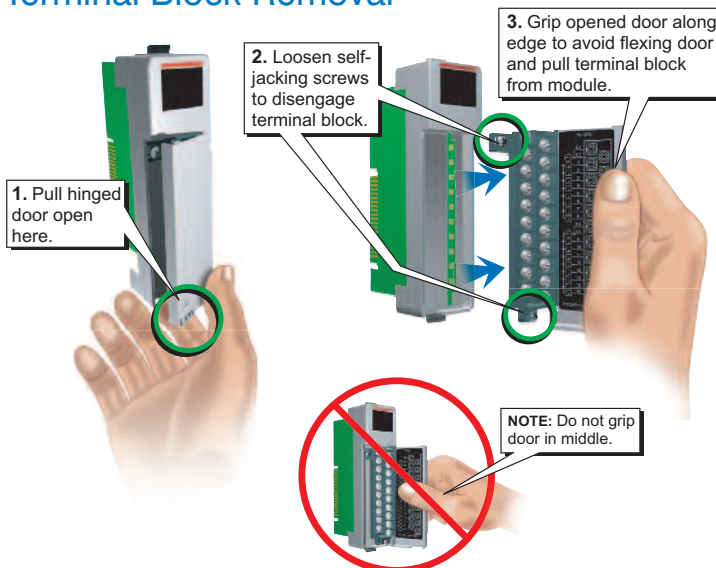
For most I/O modules you can also purchase a removable terminal block (part no. P3-RTB).

Note: P3-RTB supplied with thermocouple and RTD modules. P3-RTB not compatible with 32-point and 64-point I/O modules.



Removable Terminal Block P3-RTB

Terminal Block Removal



1. Pull hinged door open here.

2. Loosen self-jacking screws to disengage terminal block.

3. Grip opened door along edge to avoid flexing door and pull terminal block from module.

NOTE: Do not grip door in middle.