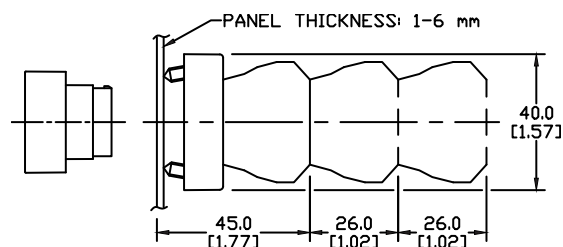


GCX Series 22 mm Plastic Pilot Devices Specifications

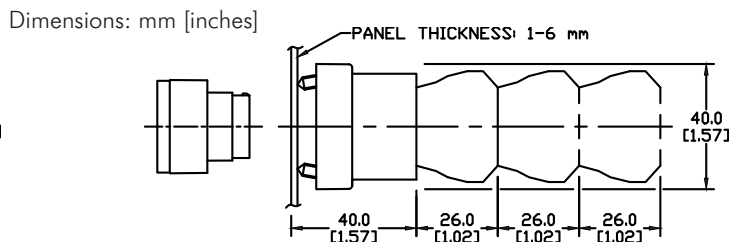
Assembly information

These pushbuttons and indicator lights are supplied with the appropriate contact blocks, unless otherwise indicated. Use these drawings as a guide to make sure there is adequate clearance behind the panel.

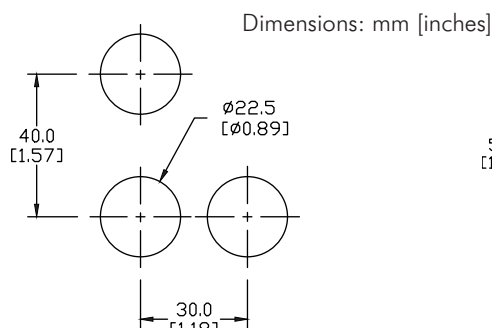
Pushbuttons and selector switches



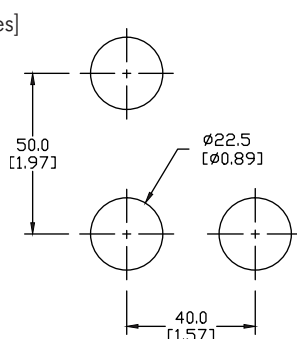
Illuminated pushbuttons and selector switches/indicator lights



Mounting



This layout is suitable if all switches are 230V or less and the same polarity.

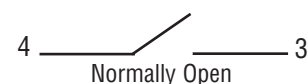


This layout is suitable if all switches are 400V or less and different polarity.

NOTE: Contact blocks can be arranged up to three deep by two wide.



Typical Wiring



Specifications

These specifications apply to all the GCX and ECX 22 mm plastic pushbuttons and switches.

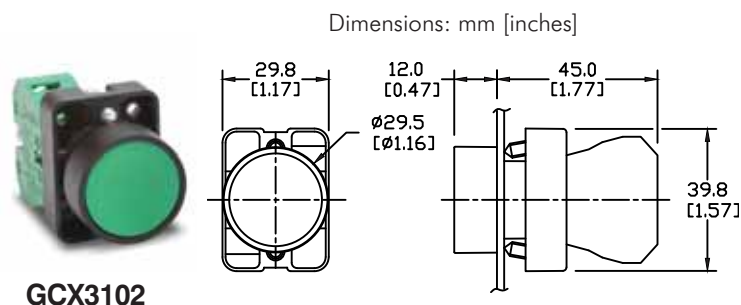
Physical Specifications	
Standards Reference	CEI EN 60947-5-1, CSA C22-2 n.14
Approvals	CSA, IMQ (where specified), UL File E189258
Enclosure Material	Fiberglass reinforced thermoplastic
Contacts Material	Silver
Protection Degree	IP 40 for GCX3151-24, GCX3151-120, GCX3153-24 and GCX3153-120. IP 65 for all others. (See Appendix of this catalog for explanation of IP ratings according to IEC 144 CEI 70-1.)
Electric Shock Protection	IEC 536, Class II
Temperature Ratings	Storage: -40° to 80°C (-40° to 176° F) Operating: -25° to +70°C (-13° to 158° F)
Working Positions	All working positions are allowed
Mechanical Life	Pushbuttons, selector switches, joy stick switches: 1,000,000 operations Emergency mushrooms and push-push pushbuttons: 300,000 operations
Positive Opening Operation	(according to IEC 947-5-1) All functions incorporating an NC contact are positive opening operation

Electrical Specifications	
Rated Thermal Current (contact block)	A300, Q300 (Refer to E22 Series mounting/contact rating section for details)
Rated Insulation Voltage	Ui 660V according to CEI EN 60947-5-1, 300V according to CSA C22-2 n.14 and UL 508
Dielectric Strength	3kV (1 second)
Insulation Resistance	2MΩ min. (500VDC)
Initial Contact Resistance	≤25mΩ
Short-Circuit Protection*	Cartridge fuses gI 10 A-500V 10, 3x381 100 KA
Terminal Markings	According to CENELEC EN 50013
Connections	Single screw with non-loosening plate clamp, 14AWG max., Tighten to 0.8Nm max
Contacts Operation	Self-cleaning types EN01 (N.C.) EN 10 (N.O.) slow action, positive opening
Operation Frequency	3600 operations per hour max.
Utilization Category	AC15 (Control of AC electromagnetic loads) 24 volts AC at 10 amps 130 volts AC at 6.5 amps DC13 (Control of DC electromagnetic loads) 24 volts DC at 1.5 amps 110 volts DC at 0.5 amps

*Note: Recommended, not supplied

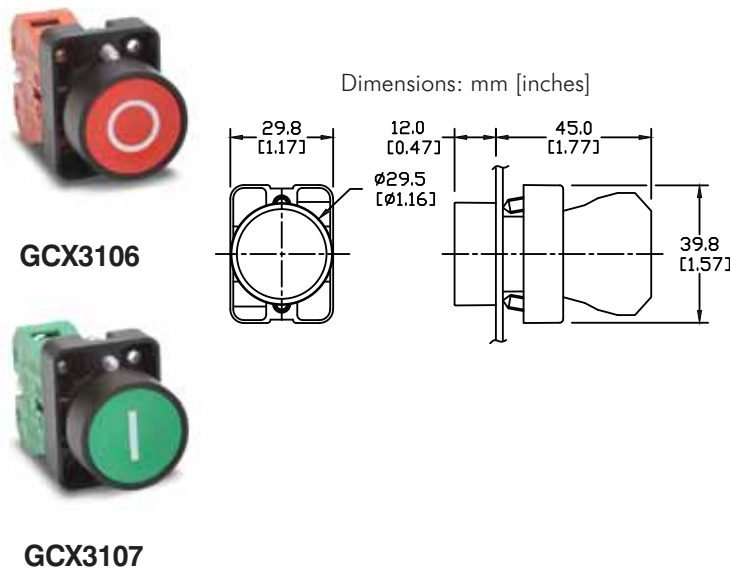
GCX Series 22 mm Plastic Pushbuttons

Momentary flush pushbuttons with protective plastic ring (30 mm dia. actuator)



Part Number	Color	Price	Description
GCX3100	Black	<-->	One N.O. contact block, 30 mm dia. actuator, mounts in 22 mm hole
GCX3101	Red	<-->	One N.C. contact block, 30 mm dia. actuator, mounts in 22 mm hole
GCX3102	Green	<-->	One N.O. contact block, 30 mm dia. actuator, mounts in 22 mm hole
GCX3103	Yellow	<-->	
GCX3104	Blue	<-->	
GCX3105	White	<-->	

Momentary Flush ON/OFF pushbuttons with protective plastic ring (30 mm dia. actuator)



Part Number	Color	Price	Description
GCX3106	Red with OFF symbol (O) on actuator	<-->	One N.C. contact block, 30 mm dia. actuator, mounts in 22 mm hole
GCX3107	Green with ON symbol (I) on actuator	<-->	One N.O. contact block, 30 mm dia. actuator, mounts in 22 mm hole

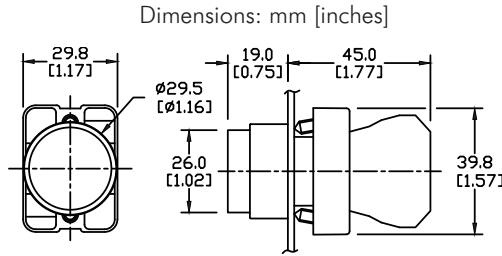
For accessories, see 22 mm Plastic Pilot Device Accessories in this section.

GCX Series 22 mm Plastic Pushbuttons

Momentary extended pushbuttons



GCX3113



Part Number	Color	Price	Description
GCX3110	Black	<-->	One N.O. contact block, extended 30 mm dia. actuator, mounts in 22 mm hole
GCX3111	Red	<-->	One N.C. contact block, extended 30 mm dia. actuator, mounts in 22 mm hole
GCX3112	Green	<-->	One N.O. contact block, extended 30 mm dia. actuator, mounts in 22 mm hole
GCX3113	Yellow	<-->	
GCX3114	Blue	<-->	
GCX3115	White	<-->	

Double-headed momentary pushbuttons

Part Number	Price	Double-headed Momentary Pushbuttons Description
GCX3150	<-->	Double-headed for on/off control, One N.O. and one N.C. contact block, fits in 22 mm dia. hole, without symbols
GCX3151-24	<-->	24VDC/VAC double-headed with indicator, faces without symbols. One N.O. and one N.C. contact block, fits in 22 mm dia. hole
GCX3151-120	<-->	120VDC/VAC double-headed with indicator, faces without symbols. One N.O. and one N.C. contact block, fits in 22 mm dia. hole
GCX3152	<-->	Double-headed for on/off control. One N.O. and one N.C. contact block, fits in 22 mm dia. hole. With "ON" (I) and "OFF" (O) symbols
GCX3153-24*	<-->	24VDC/VAC double-headed with indicator, with ON (1) and OFF (0) symbols. One N.O. and one N.C. contact block
GCX3153-120*	<-->	120VDC/VAC double-headed with indicator, with ON (1) and OFF (0) symbols. One N.O. and one N.C. contact block

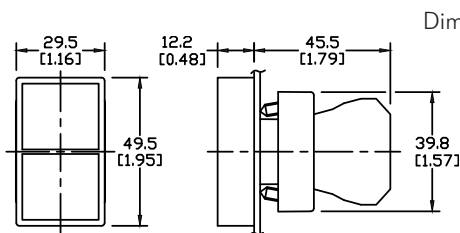
* Note: Lamp data in 22 mm Plastic Pilot Device Accessories in this section.



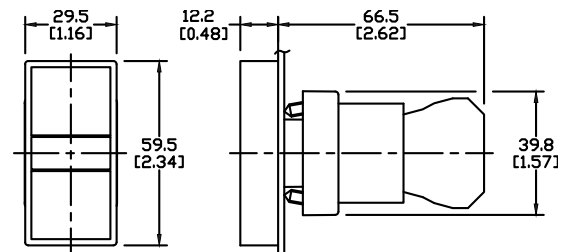
GCX3152 (with on/off symbols)



GCX3151-24



GCX3150, GCX3152 models



GCX3151-24, GCX3153-24, GCX3151-120, GCX3153-120 models

For accessories, see 22 mm Plastic Pilot Device Accessories in this section.

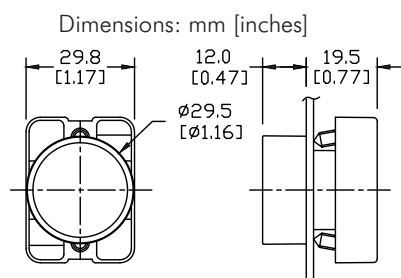
GCX Series 22 mm Plastic Pushbuttons without Contact Block

Momentary flush pushbutton operator (without contact block) (30 mm dia. actuator)



GCX3100-SC

GCX3101-SC



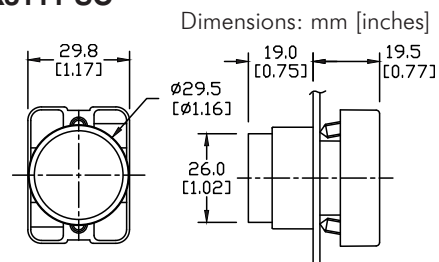
NOTE: Contact block sold separately. See accessories.

Part Number	Color	Price	Description
GCX3100-SC	Black	<--->	22 mm plastic pushbutton operator, flush, includes 30mm diameter operator and support base ONLY. Contact blocks sold separately. Mounts in 22 mm hole.
GCX3101-SC	Red	<--->	22 mm plastic pushbutton operator, flush, includes 30mm diameter operator and support base ONLY. Contact blocks sold separately. Mounts in 22 mm hole.
GCX3102-SC	Green	<--->	22 mm plastic pushbutton operator, flush, includes 30mm diameter operator and support base ONLY. Contact blocks sold separately. Mounts in 22 mm hole.

Momentary extended pushbutton operator (without contact block) (30 mm dia. actuator)



GCX3111-SC



NOTE: Contact block sold separately. See accessories.

Part Number	Color	Price	Description
GCX3110-SC	Black	<--->	22 mm plastic pushbutton operator, extended, includes 30 mm diameter operator and support base ONLY. Contact block sold separately. Mounts in 22 mm hole.
GCX3111-SC	Red	<--->	22 mm plastic pushbutton operator, extended, includes 30 mm diameter operator and support base ONLY. Contact block sold separately. Mounts in 22 mm hole.
GCX3112-SC	Green	<--->	22 mm plastic pushbutton operator, extended, includes 30 mm diameter operator and support base ONLY. Contact block sold separately. Mounts in 22 mm hole.

Contact Blocks

Contact blocks are available for all these products. See accessories.



ECX1040-2

ECX1030-2

For accessories, see 22 mm Plastic Pilot Device Accessories in this section.

GCX Series 22 mm Plastic Pilot Devices

Features

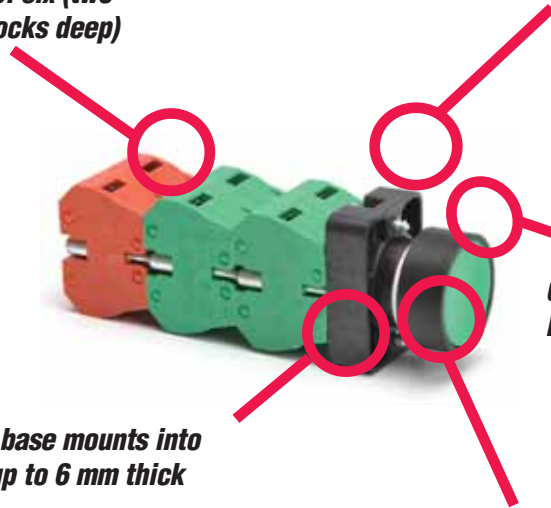
Any combination of contact blocks is allowed, up to a total of six (two blocks wide and three blocks deep)

Secure mounting method eliminates twisting in mounting hole

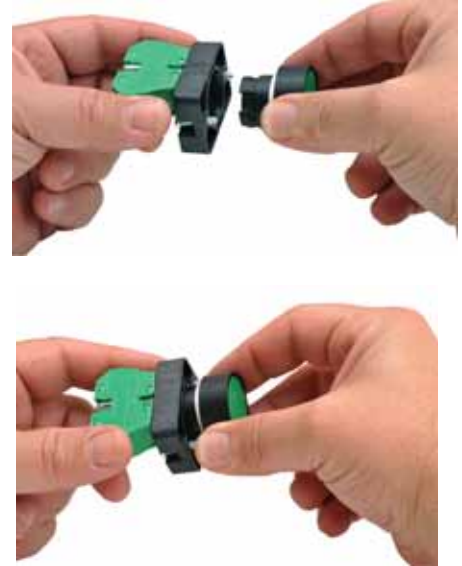
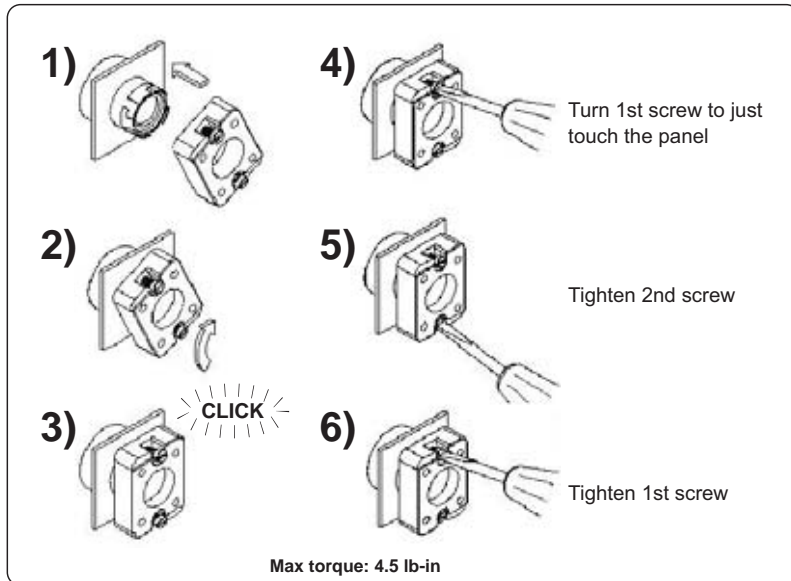
Operators are protected to IP 40 or IP65 (see specifications below)

Support base mounts into panels up to 6 mm thick

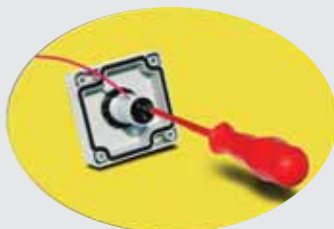
Fiberglass reinforced thermoplastic bezel



Easy installation



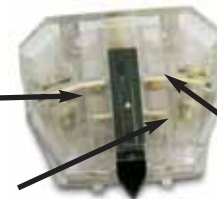
All indicators offer side wire entry with back screw terminals for easy wiring



Self-cleaning silver contacts provide reliable, low-energy switching

Pressure plate wiring terminals for easy, secure wiring, accepting up to 14 AWG wire

Contacts rated A300
(Refer to E22 Series mounting/contact rating section for details)



Clear contact block for illustration purposes. Clear contact blocks are not available for sale from AutomationDirect.

22 mm Plastic Pilot Device Accessories

Replacement incandescent bulbs



ECX1902-5

Replacement Incandescent Bulbs				
Part Number	Quantity	Price	Rating	Description
ECX1900-5	Pkg of 5 bulbs	<-->	6V@ 200mA , 1.2 watts	6V replacement bulb for 22 mm switches and indicators. Miniature bayonet base T31/4
ECX1902-5	Pkg of 5 bulbs	<-->	24V@ 80mA 2 watts	24V replacement bulb for 22 mm switches and indicators. Miniature bayonet base T31/4
ECX1904-5	Pkg of 5 bulbs	<-->	130V@20mA 2.6 watts	120V replacement bulb for 22 mm switches and indicators. Miniature bayonet base T31/4

Note: Bulb removal tool available. Order part number HT8LAMPTOOL.

Replacement LED lamps



ECX1915-2

Replacement LED Lamps					
Part Number	Color	Quantity	Price	Rating	Description
ECX1911-2	Red	Pkg of 2 LED lamps	<-->	24V@26mA 0.6 watts	LED replacement lamp for miniature bayonet bases
ECX1912-2	Green		<-->		
ECX1913-2	Yellow		<-->		
ECX1914-2	Blue		<-->		
ECX1915-2	White		<-->		
ECX1921-2	Red		<-->	120V@5mA 0.6 watts	Works with 22 mm switches and indicators, but illumination will not be as even when used with the ECX 22 mm indicators Note: Will not replace sealed Cutler-Hammer monoblock LED indicators.
ECX1922-2	Green		<-->		
ECX1923-2	Yellow		<-->		
ECX1924-2	Blue		<-->		
ECX1925-2	White		<-->		

Note: LED modules have very low current draw and should not be used with triac output devices like PLC triac output modules. It is recommended that dry contact outputs be used to switch 120 volt AC LED modules.

Hole plug



ECX1490

Hole Plug			
Part Number	Color	Price	Description
ECX1490	Black	<-->	Plastic hole plug for 22.5 mm openings in panels and enclosures; supplied with O-ring and mounting screw. Two plugs per package.

Protective covers for pushbuttons



ECX1703-5

Protective Covers for Pushbuttons				
Part Number	Color	Quantity	Price	Description
ECX1700-5	Black	Pkg of 5 protective caps	<-->	Silicone protective covers for use with 22 mm standard-size flush pushbuttons. Will not work with Cutler-Hammer pushbuttons, 22 mm plastic illuminated or extended pushbuttons, or 22 mm plastic pushbuttons with 40 mm actuator face.
ECX1701-5	Red		<-->	
ECX1702-5	Green		<-->	
ECX1703-5	Yellow		<-->	
ECX1704-5	Blue		<-->	
ECX1705-5	Clear		<-->	
ECX1706-5	Clear		<-->	Clear silicone protective covers for use with 22 mm illuminated and extended pushbuttons only . Will not work with Cutler-Hammer pushbuttons or 22 mm mushroom pushbuttons.

Knockout Punches



109225

Ruko's knockout punch hole-cutting tool includes punch, die and draw bolt (without ball bearing). Use for sheet steel, stainless-steel sheets, non-ferrous and light metals, and plastics up to 0.16" (8 ga.) thick. Replacement bolts are offered in three of the most popular sizes. See the Tools section of the catalog for details.

Note: Part number 109225 is recommended when punching holes for 22mm pilot devices.

Replacement keys



ECX1067-2

Replacement Keys			
Part Number	Quantity	Price	Description
ECX1067-2	Pkg of 2	<-->	Replacement key for GCX series key-actuated selector switches, pack of 2 sets (2 keys each). NOTE: Will not work with Cutler-Hammer 22mm switches.

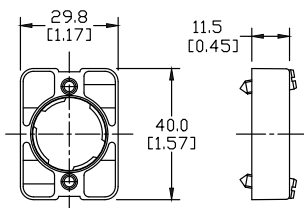
Note: All key-actuated 22mm plastic selector switches are keyed alike.

22 mm Plastic Pilot Device Accessories

Replacement 22 mm support base



ECX3029-2

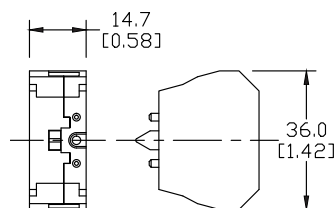


Replacement 22 mm Support Base			
Part Number	Quantity	Price	Description
ECX3029-2	Pkg of 1	<-->	22 mm plastic support base Note: This item is supplied as a replacement part and is not required with any switch assembly. Will not work with Cutler-Hammer 22 mm switches sold by AUTOMATIONDIRECT

Replacement contact blocks



ECX1030-2



Replacement Contact Blocks				
Part Number	Quantity	Price	Contacts	Description
ECX1030-2	Pkg of 2	<-->	Red, normally-closed (N.C.)	Replacement contact block for 22 mm pushbuttons and selector switches. Tightening Torque, terminal screw: 0.8Nm max mounting screw: 0.5Nm max
ECX1030-5	Pkg of 5	<-->		
ECX1040-2	Pkg of 2	<-->	Green, normally-open (N.O.)	Note: Will not work with Cutler-Hammer 22 mm switches sold by AUTOMATIONDIRECT
ECX1040-5	Pkg of 5	<-->		
ECX1042-2	Pkg of 2	<-->	Brown, normally-open (N.O.), push-push	Use on lighted Push-push button only

Note: See electrical specifications on GCX Series 22 mm Plastic Pilot Devices Specifications page at beginning of this section.

EMERGENCY STOP legend plate



ECX1651

EMERGENCY STOP Legend Plate			
Part Number	Quantity	Price	Description
ECX1651	pkg. of 1	<-->	Oversize yellow circular EMERGENCY STOP legend plate for 22 mm E-stop type mushroom pushbuttons, 60 mm outside diameter.

Two-position short lever operator



GR1172PR-5

Short Lever Replacement Operator				
Part Number	Lamp Color	Price	2-Position	Use with
GR1172PR-5	Red	<-->	22 mm 2-position selector switch illuminated short lever replacement operator, 5/pk	Part numbers starting with GCX124, GCX125 GCX324, GCX325
GR1172PV-5	Green	<-->	22 mm 2-position selector switch illuminated short lever replacement operator, 5/pk	
GR1172PG-5	Yellow	<-->	22 mm 2-position selector switch illuminated short lever replacement operator, 5/pk	
GR1172PB-5	Blue	<-->	22 mm 2-position selector switch illuminated short lever replacement operator, 5/pk	
GR1172PN-5	Clear	<-->	22 mm 2-position selector switch illuminated short lever replacement operator, 5/pk	

22 mm Plastic Pilot Device Accessories

Three-position short lever operator



GR1288PR-5

Short Lever Replacement Operator				
Part Number	Lamp Color	Price	3-Position	Use with
GR1288PR-5	Red	<--->	22 mm 3-position selector switch illuminated short lever replacement operator, 5/pk	Part numbers starting with GCX126, GCX128, GCX326, G VX328
GR1288PV-5	Green	<--->	22 mm 3-position selector switch illuminated short lever replacement operator, 5/pk	
GR1288PG-5	Yellow	<--->	22 mm 3-position selector switch illuminated short lever replacement operator, 5/pk	
GR1288PB-5	Blue	<--->	22 mm 3-position selector switch illuminated short lever replacement operator, 5/pk	
GR1288PN-5	Clear	<--->	22 mm 3-position selector switch illuminated short lever replacement operator, 5/pk	

Mushroom switch replacement operator



PL1298P-5

Mushroom Switch Replacement Operator				
Part Number	Lamp Color	Price	Description	Use with
PL1171PR-5	Red	<--->	22 mm, illuminated momentary Mushroom switch replacement operator, red, 5/pk	Part numbers starting with GCX1221, GCX3221 mushroom-style illuminated pushbuttons
PL1298P-5	Red	<--->	22 mm illuminated twist-to-release mushroom switch replacement operator, red, 5/pk	Part numbers starting with GCX1226, GCX3226 mushroom-style illuminated pushbuttons

Flush pushbutton replacement operator



GR1168PR-5

Flush Pushbutton Replacement Operator				
Part Number	Lamp Color	Price	Description	Use with
GR1168PR-5	Red	<--->	22 mm illuminated flush pushbutton replacement operator, 5/pk	Part numbers starting with GCX119, GCX120, GCX319, GCX320
GR1168PV-5	Green	<--->	22 mm illuminated flush pushbutton replacement operator, 5/pk	
GR1168PG-5	Yellow	<--->	22 mm illuminated flush pushbutton replacement operator, 5/pk	
GR1168PB-5	Blue	<--->	22 mm illuminated flush pushbutton replacement operator, 5/pk	
GR1168PN-5	Clear	<--->	22 mm illuminated flush pushbutton replacement operator, 5/pk	
GR1168PW-5	White	<--->	22 mm illuminated flush pushbutton replacement operator, 5/pk	

Extended pushbutton replacement operator



PL1308PR-5

Extended Pushbutton Replacement Operator				
Part Number	Lamp Color	Price	Description	Use with
PL1308PR-5	Red	<--->	22 mm illuminated extended pushbutton, replacement operator, 5/pk	Part numbers starting with GCX121, GCX321
PL1308PV-5	Green	<--->	22 mm illuminated extended pushbutton, replacement operator, 5/pk	
PL1308PG-5	Yellow	<--->	22 mm illuminated extended pushbutton, replacement operator, 5/pk	
PL1308PB-5	Blue	<--->	22 mm illuminated extended pushbutton, replacement operator, 5/pk	
PL1308PN-5	Clear	<--->	22 mm illuminated extended pushbutton, replacement operator, 5/pk	
PL1308PW-5	White	<--->	22 mm illuminated extended pushbutton, replacement operator, 5/pk	