

Power Relays



Features

- High power contacts capable of switching up to 40A
- Open construction
- SPDT, DPST and DPDT models
- Riveted construction for high reliability
- Maximum contact voltage up to 600V

AD-PR40-1C-12D shown

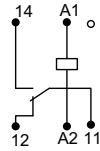
Power Relay Selection Guide						
Part Number	Price	Coil Voltage	Configuration	Contact Rating	Price	Dimensions
AD-PR40-1C-12D	<--->	12VDC	SPDT	40A	<--->	Figure 1
AD-PR40-1C-24D	<--->	24VDC				
AD-PR40-1C-24A	<--->	24VAC				
AD-PR40-1C-120A	<--->	120VAC				
AD-PR40-1C-240A	<--->	240VAC				
AD-PR40-2A-12D	<--->	12VDC	DPST	40A	<--->	Figure 2
AD-PR40-2A-24D	<--->	24VDC				
AD-PR40-2A-24A	<--->	24VAC				
AD-PR40-2A-120A	<--->	120VAC				
AD-PR40-2A-240A	<--->	240VAC	DPDT	40A	<--->	Figure 3
AD-PR40-2C-12D	<--->	12VDC				
AD-PR40-2C-24D	<--->	24VDC				
AD-PR40-2C-24A	<--->	24VAC				
AD-PR40-2C-120A	<--->	120VAC				
AD-PR40-2C-240A	<--->	240VAC				

AD-PR40-1C-xxxx

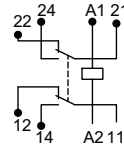
AD-PR40-2C-xxxx

AD-PR40-2A-xxxx

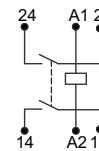
Wiring



SPDT



DPDT



DPST

Dimensions inches [mm]

Figure 1
AD-PR40-1C-xx

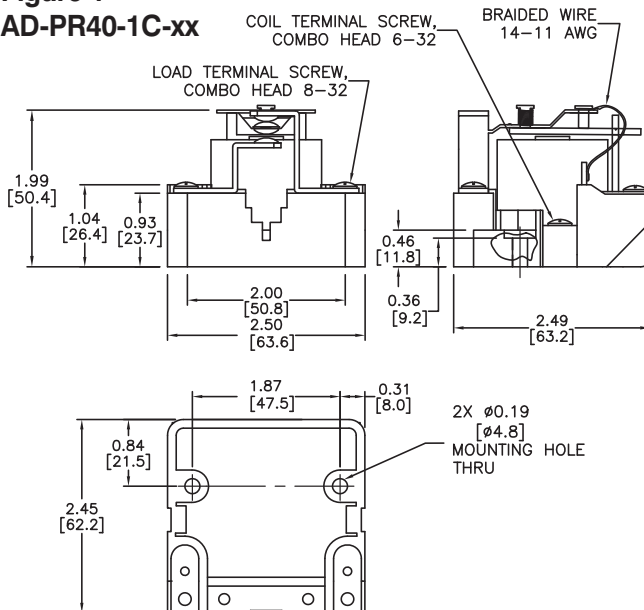
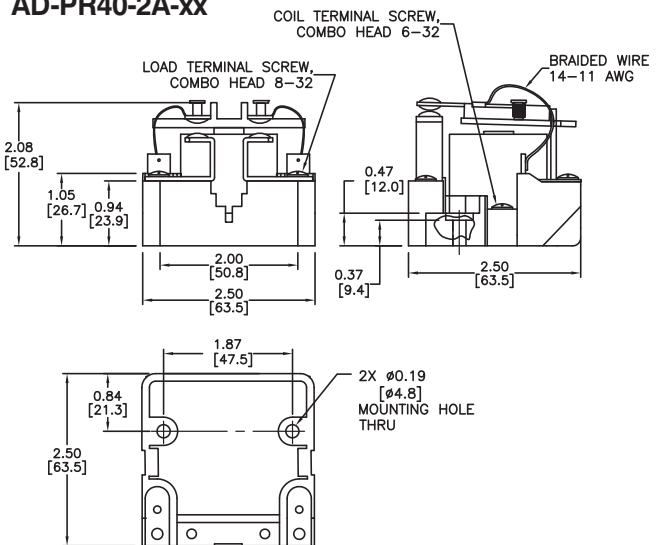


Figure 2
AD-PR40-2A-xx



Power Relays Specifications

Power Relays Specification Table															
Part Numbers	AD-PR40-1C-12D	AD-PR40-1C-24D	AD-PR40-1C-24A	AD-PR40-1C-120A	AD-PR40-1C-240A	AD-PR40-2A-12D	AD-PR40-2A-24D	AD-PR40-2A-24A	AD-PR40-2A-120A	AD-PR40-2A-240A	AD-PR40-2C-12D	AD-PR40-2C-24D	AD-PR40-2C-24A	AD-PR40-2C-120A	AD-PR40-2C-240A
General Specifications															
Service Life	Mechanical: 1 million operations AC and DC Electrical: 50,000 operations @ 300VAC/100,000 @ 28VDC														
Operating Temperature	-55°C to 55°C (-67°F to 131°F)														
Response Time	30 ms														
Weight	227g (8 oz) to 312g (11 oz)														
Agency Approvals and Standards	UL Recognized E191059, CE Certified (9667186-9811), CSA Certified 244610, RoHS														
Environmental Protection	Not applicable to open relays														
Pilot Duty	A600														
Terminal Wire	Max 10 AWG														
Terminal Torque	11 to 15 in-lb (1.2 to 1.7 Nm)														
Coil Specifications															
Coil Input Voltage	12VDC	24VDC	24VAC	120VAC	240VAC	12VDC	24VDC	24VAC	120VAC	240VAC	12VDC	24VDC	24VAC	120VAC	240VAC
Coil Resistance	70Ω	290Ω	12Ω	290Ω	1.2kΩ	70Ω	290Ω	12Ω	290Ω	1.2kΩ	70Ω	290Ω	12Ω	290Ω	1.2kΩ
Power Consumption	60Hz, 10VA (AC) , 4.0W DC														
Dropout Voltage (% of rated voltage)	Min. 10%														
Pull-in Voltage	Max. 85% of nominal voltage or less AC, Max. 80% of nominal voltage or less DC														
Max. Voltage (Max. continuous voltage)	110% of the rated coil voltage														
Contact Specifications															
Contact Type	SPDT				DPST				DPDT						
Contact Material	Silver cadmium oxide, gold flashed														
Contact Rating	40A @ 300VAC or 28VDC; 2HP motor load														
Minimum Switching Requirement	1A @ 5VAC/VDC														
Maximum Switching Voltage	600V @ 5A														
Dielectric Strength Between Contacts	1600V rms														

Dimensions inches [mm]

Figure 3
AD-PR40-2C-xx

