

KS 71 Elements Quick Selection Guide

STEP 1 - Optical Elements Quick Selection Guide									
Type of Light	Part Number	Color	Operating Voltage	Price	Type of Light	Part Number	Color	Operating Voltage	Price
Incandescent Permanent*	64110000	Red	Depends on Bulb Selection	<-->	Xenon Flashing Light	64310055	Red	24V DC	<-->
	64120000	Green		<-->		64320055	Green		<-->
	64130000	Yellow		<-->		64330055	Yellow		<-->
	64140000	Clear		<-->		64340055	Clear		<-->
	64150000	Blue		<-->		64350055	Blue		<-->
Incandescent Bulbs	95584035	Clear	24V DC	<-->		64310067	Red	115V AC	<-->
	95584057	Clear	115V AC	<-->		64320067	Green		<-->
LED Permanent	64410075	Red	24V AC/DC	<-->		64330067	Yellow		<-->
	64420075	Green		<-->		64340067	Clear		<-->
	64430075	Yellow		<-->		64350067	Blue		<-->
	64440075	Clear		<-->	64411075	Red	24V AC/DC	<-->	
	64450075	Blue		<-->	64421075	Green		<-->	
	64410067	Red	115V AC	<-->	64431075	Yellow		<-->	
	64420067	Green		<-->	64441075	Clear		<-->	
	64430067	Yellow		<-->	64451075	Blue		<-->	
	64440067	Clear		<-->	64411067	Red	115V AC	<-->	
	64450067	Blue		<-->	64421067	Green		<-->	
LED Flashing Light	64412055	Red	24V DC	<-->	64431067	Yellow		<-->	
	64422055	Green		<-->	64441067	Clear		<-->	
	64432055	Yellow		<-->	64451067	Blue		<-->	
	64442055	Clear		<-->	64413075	Red	24V AC/DC	<-->	
	64452055	Blue		<-->	64423075	Green		<-->	
LED Rotating Light	64413075	Red	24V AC/DC	<-->	64433075	Yellow		<-->	
	64423075	Green		<-->	64443075	Clear		<-->	
	64433075	Yellow		<-->	64453075	Blue		<-->	
	64443075	Clear		<-->					
	64453075	Blue		<-->					

* Note: Bulbs are required for permanent incandescent optical element

STEP 2 - Audible Elements Quick Selection Guide					
Part Number	Description	Voltage	Tone Frequency	Max. Volume	Price
64580075	Buzzer element	24V AC/DC	1.75 kHz	85 dB	<-->
64580077		115V AC			<-->
64582075	Multi-functional siren	24V AC/DC	1.6 / 3.4 kHz	100 dB	<-->
64582067		115V AC			<-->
64585055	Multi-functional siren, external trigger	24V DC	1.6 / 3.4 kHz	100 dB	<-->
64581055	Siren element with self-adjusting sound output	24V DC	2.5 kHz	100 dB	<-->

STEP 3 - Terminal Elements Quick Selection Guide			
Part Number	Description	Mounting	Price
64082000	Screw terminal with M3 clamps	Base Mounting	<-->
64080000	Terminal element with CAGE CLAMP® technology		<-->
64083000	Screw terminal with M3 clamps	Tube Mounting	<-->
64081000	Terminal element with CAGE CLAMP® technology		<-->

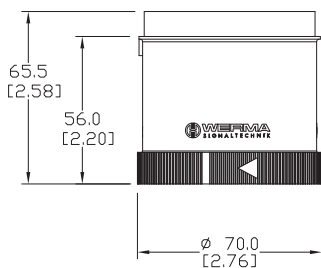
STEP 4 - Tube Mounting/Accessories Quick Selection		
Part Number	Description	Price
97584510	Anodized tube, 100 mm [3.94 in.] long	<-->
97584025	Anodized tube, 250 mm [9.84 in.] long	<-->
97584040	Anodized tube, 400 mm [15.75 in.] long	<-->
97584060	Anodized tube, 600 mm [23.62 in.] long	<-->
97584080	Anodized tube, 800 mm [31.49 in.] long	<-->
97584003	Anodized tube, 1000 mm [39.37 in.] long	<-->
96000018	Tube with clamp	<-->
96000025	Adapter for single-hole mounting	<-->
97584010	Base with integrated tube	<-->
97584090	Plastic base for 25 mm [0.98 in.] diameter tube	<-->
97584091	Metal base for 25 mm [0.98 in.] diameter tube	<-->
96000031	Plastic tube for foldaway base	<-->
97584002	Adapter for tube mounting	<-->
96000004	Cable gland for surface mounting	<-->
96000030	Foldaway base	<-->

STEP 5 - Contact Boxes & Brackets Quick Selection Guide			
Mounting Option	Part Number	Description	Price
Base Mounting	97584001	Contact box with side exit cable	<-->
	96000002	Bracket for base mounting	<-->
	97584085	Bracket for 1-sided mounting	<-->
	97584086	Bracket for 2-sided mounting	<-->
Tube Mounting	97584001	Contact box with side exit cable	<-->
	97584004	Contact box w/ magnetic base and side cable exit	<-->
	96000014	Bracket for base mounting w/ concealed cable entry	<-->
	96000001	Bracket for tube mounting	<-->

KS 71 Optical Elements Specifications

Optical Elements Technical Specifications										
Description	Voltage	Part Number	Color	Current	Starting Current	Operating Temp/Protection	Life Duration	Flash Frequency	Housing Material	Weight
Incandescent Permanent Light Element with B15d Bayonet Socket (Purchase bulb separately)	max. 250V (Depends on bulb selection)	64110000	Red	-	-	-4°F to 140°F [-20°C to 60°C] IP65	up to 5,000 hrs	-	Polycarbonate	55 g [1.94 oz]
		64120000	Green							
		64130000	Yellow							
		64140000	Clear							
		64150000	Blue							
LED Permanent Light Element	24V AC/DC	64410075	Red	max. 30 mA	max. 500 mA	-4°F to 122°F [-20°C to 50°C] IP65	up to 100,000 hrs	-	Polycarbonate	58 g [2.05 oz]
		64420075	Green	max. 25 mA						
		64430075	Yellow	max. 30 mA						
		64440075	Clear	max. 25 mA						
		64450075	Blue	max. 25 mA						
	115V AC	64410067	Red	max. 20 mA	-	-4°F to 122°F [-20°C to 50°C] IP65	up to 100,000 hrs	-	Polycarbonate	58 g [2.05 oz]
		64420067	Green							
		64430067	Yellow							
		64440067	Clear							
		64450067	Blue							
LED Flashing Light Element	24V DC	64412055	Red	35 mA	max. 500 mA	-4°F to 122°F [-20°C to 50°C] IP65	up to 50,000 hrs	1 Hz on for 2x10 ms	Polycarbonate	75 g [2.65 oz]
		64422055	Green							
		64432055	Yellow							
		64442055	Clear							
		64452055	Blue							
Xenon Flashing Light Element	24V DC	64310055	Red	125 mA	max. 500 mA	-4°F to 122°F [-20°C to 50°C] IP65	up to 1,100 hrs	1 Hz on for 10 ms	Polycarbonate	73 g [2.57 oz]
		64320055	Green							
		64330055	Yellow							
		64340055	Clear							
		64350055	Blue							
	115V AC	64310067	Red	22 mA	-	-4°F to 122°F [-20°C to 50°C] IP65	up to 1,100 hrs	1 Hz on for 10 ms	Polycarbonate	74 g [2.61 oz]
		64320067	Green							
		64330067	Yellow							
		64340067	Clear							
		64350067	Blue							
LED Blinking Light Element	24V AC/DC	64411075	Red	max. 30 mA	max. 500 mA	-4°F to 122°F [-20°C to 50°C] IP65	up to 100,000 hrs	1 Hz on for 550 ms	Polycarbonate	58 g [2.05 oz]
		64421075	Green	max. 25 mA						
		64431075	Yellow	max. 30 mA						
		64441075	Clear	max. 25 mA						
		64451075	Blue	max. 25 mA						
	115V AC	64411067	Red	max. 20 mA	-	-4°F to 122°F [-20°C to 50°C] IP65	up to 100,000 hrs	1 Hz on for 550 ms	Polycarbonate	58 g [2.05 oz]
		64421067	Green							
		64431067	Yellow							
		64441067	Clear							
		64451067	Blue							
LED Rotating Light Element	24V AC/DC	64413075	Red	max. 40 mA	max. 500 mA	-4°F to 122°F [-20°C to 50°C] IP65	up to 100,000 hrs	120 rotations per minute	Polycarbonate	67 g [2.36 oz]
		64423075	Green							
		64433075	Yellow							
		64443075	Clear							
		64453075	Blue							

Dimensions in mm [in.]



Incandescent Permanent Optical Element

Bulbs for Incandescent Permanent Optical Element			
Part Number	Description	Voltage	Life Duration
95584035	5 W Bulb for Incandescent Light B15d Bayonet Socket	24V DC	up to 5,000 hrs
95584057		115V AC	



KS 71 Audible Elements Specifications

KS 71 Audible Elements Specifications					
Part Number	64580075	64580077	64582075	64582067	64585055
Description	Buzzer Element		Multi-functional Siren		
Voltage	24V AC/DC	115V AC	24V AC/DC	115V AC	24V DC
Current Consumption	≤ 25 mA		≤ 80 mA	≤ 40 mA	≤ 80 mA
Tone Frequency	1.7 kHz		1.6 to 3.4 kHz		
Maximum Volume	85 dB		100 dB		
Tone Type	Continuous/Pulse Selectable		8 tones selectable via DIP switches		Up to 7 tones externally triggered
Life Duration	> 5000 h				
Operating Temperature	-4°F to 122°F [-20°C to 50°C]				
Weight	74 g [2.61 oz]	82 g [2.89 oz]	82 g [2.89 oz]	87 g [3.07 oz]	77 g [2.72 oz]
Housing Material	Polycarbonate		ABS, Polycarbonate		

Note: Refer to insert for wiring diagram.

Number of tones available are limited by number of elements in stack.

Dimensions in mm [in.]

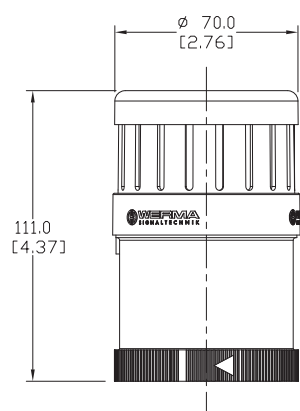


Audible Element Dimensions For:

64580075
64580077
64582075
64582067
64585055

Siren element with self-adjusting sound output

- Automatic sound output adjustment between 80 and 100 dB
- Sound output is about 5 dB louder than the background noise level
- Continual measurement of the ambient noise level
- Ideal for applications with changing ambient sound levels



KS 71 Self-Adjusting Siren Element		
Part Number	Technical Specifications	
64581055	Housing	Polycarbonate
	Tone type	Pulse tone
	Tone frequency	2.5 kHz
	Sound output	80 dB - max. 100 dB
	Operating Voltage	24 V DC
	Starting Current	< 500 mA
	Current consumption	≤ 150 mA
	Life Duration	> 5000 h
	Weight	125 g [4.41 oz]
	Temperature Range	-4°F to 122°F [-20°C to 50°C]



The siren element adjusts its sound output through continual measurement of the ambient noise level. The emitted tone is about 5 dB louder than the background noise level. The warning signal can always be heard without being irritatingly loud for people in the siren's vicinity.

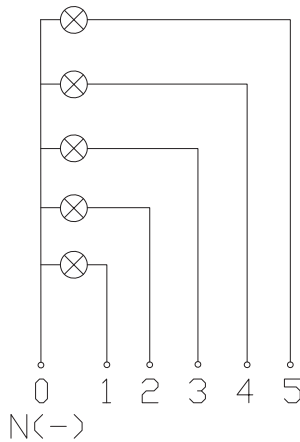
KS 71 Terminal Elements Specifications

KS 71 Terminal Element Specifications				
Part Number	64082000	64080000	64083000	64081000
Description	Screw terminal element with cap and seal	Screwless terminal element with cap and seal	Screw terminal element with cap	Screwless terminal element with cap
Mounting	Base and Bracket Mounting		Tube Mounting	
Connection	max. 2.5 mm ² - single wire M3 Clamps	max. 2.5 mm ² CAGE CLAMP® technology	max. 2.5 mm ² - single wire M3 Clamps	max. 2.5 mm ² CAGE CLAMP® technology
Cable Entry	Cable diameter max. 14 mm [0.55 in.]			
Operating Temperature	-4°F to 122°F [-20°C to 50°C]			
Torque	max 0.4 Nm	-	max 0.4 Nm	-
Gauge	AWG 18 to AWG 14			
Weight	83 g [2.93 oz]	75 g [2.65 oz]	84 g [2.96 oz]	77 g [2.72 oz]
Housing Material	Polyamide Glass Fiber-Reinforced			

Dimensions in mm [in.]

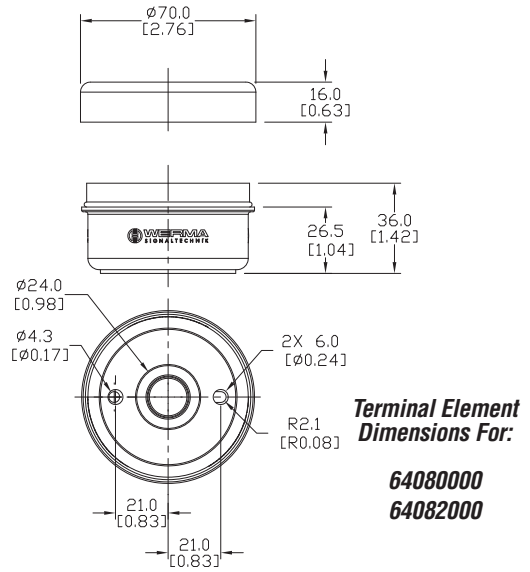
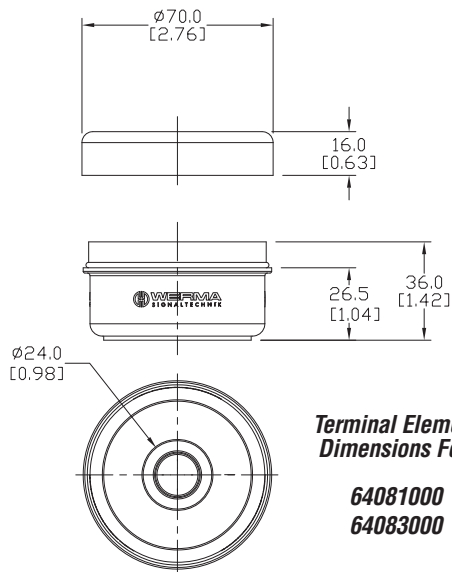


Screw terminal element
M3 clamps
(including cap)









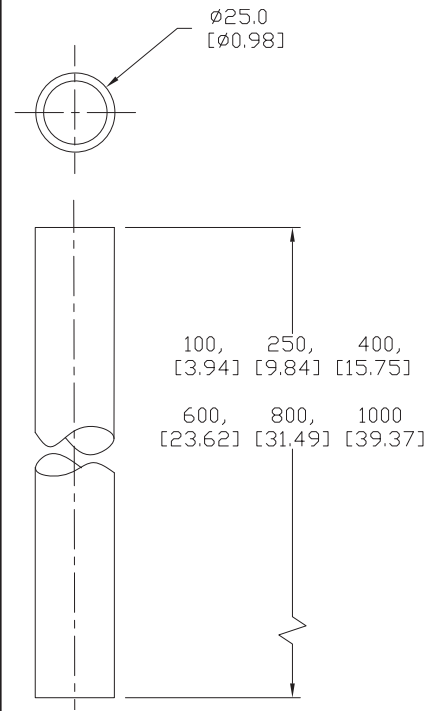
64080000

Terminal element with
CAGE CLAMP® technology
(including cap and seal)

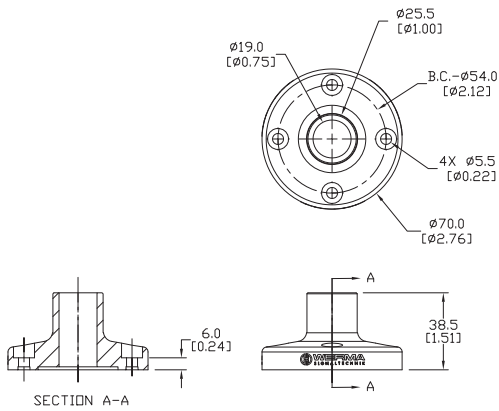


KS 71 Mounting Hardware Specifications

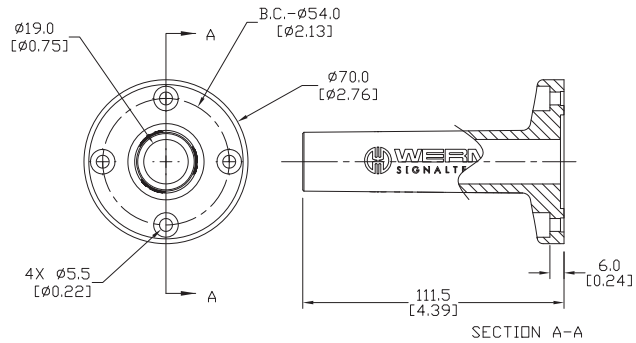
KS 71 Mounting Hardware Specifications				
Part Number	Description	Operating Temp.	Material	Weight
	97584510	Tube, 100 mm [3.94 in.]	Anodized Aluminum	30 g [1.06 oz]
	97584025	Tube, 250 mm [9.84 in.]		73 g [2.57 oz]
	97584040	Tube, 400 mm [15.75 in.]		120 g [4.23 oz]
	97584060	Tube, 600 mm [23.62 in.]		180 g [6.35 oz]
	97584080	Tube, 800 mm [31.49 in.]		236 g [8.32 oz]
	97584003	Tube, 1000 mm [39.37 in.]		296 g [10.44 oz]
	96000018	Tube with clamp	Polythylene Tube Steel Clamp	175 g [6.17 oz]
	97584010	Base with integrated tube	Polyamide Glass-Reinforced	63 g [2.22 oz]
	97584090	Plastic base for 25 mm [0.98 in.] diameter tube	Polyamide Glass-Reinforced	40 g [1.41 oz]
	97584091	Metal base for 25 mm [0.98 in.] diameter tube	Anodized Aluminum	110 g [3.88 oz]
	96000031	Plastic tube for foldaway base	Polyethylene	13 g [0.46 oz]



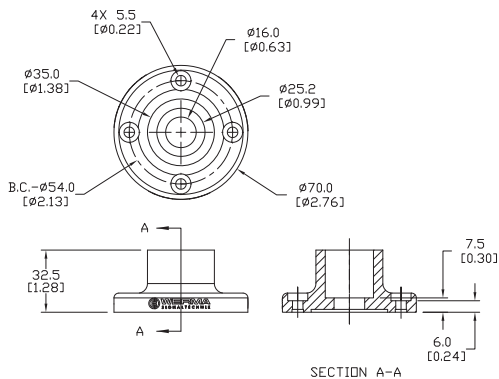
Dimensions in mm [in.]



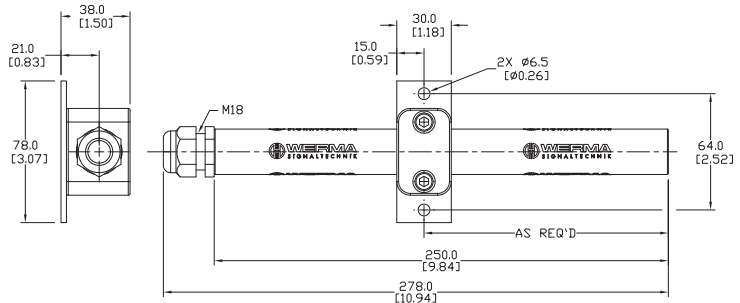
97584090



97584010










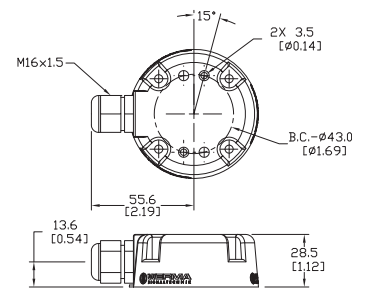
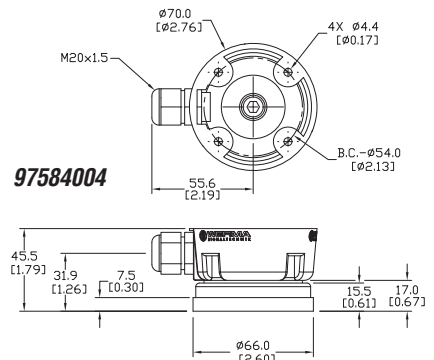
97584091



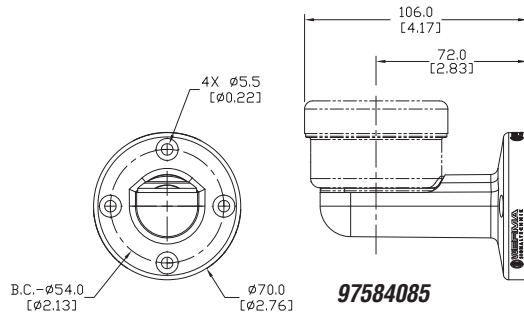
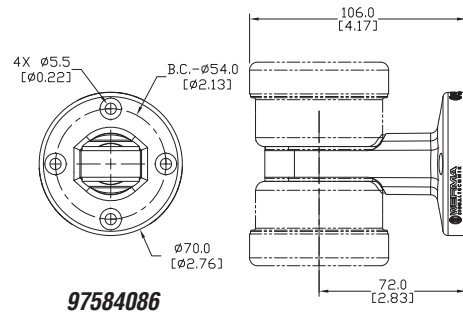
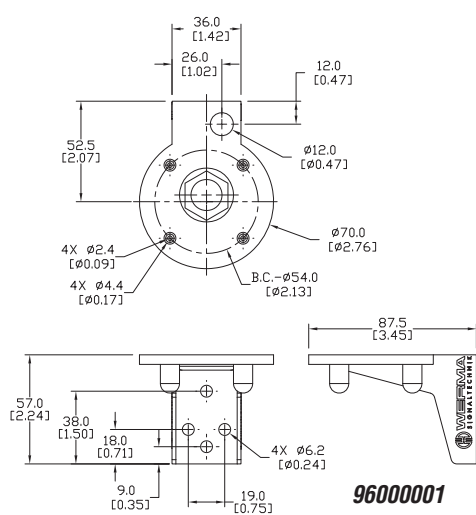
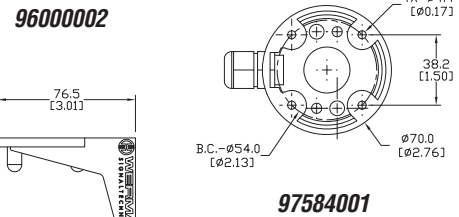
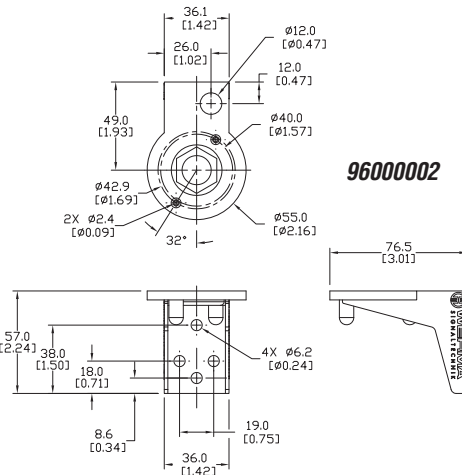
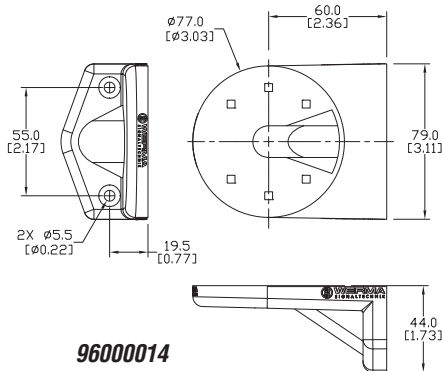
96000018

KS 71 Brackets & Contact Boxes Specifications

Brackets & Contact Boxes Technical Specifications				
Part Number	Description	Temp. Range	Material	Weight
 97584001	Contact box with side cable exit, with mounting material	-22°F to 140°F [-30°C to 60°C]	Polyamide	71 g [2.50 oz]
 97584004	Contact box with magnetic base and side cable exit	-22°F to 140°F [-30°C to 60°C]	Polyamide	316 g [11.15 oz]
 97584085	Bracket for 1-sided mounting, including rubber seals	-4°F to 140°F [-20°C to 60°C]	Polyamide	78 g [2.75 oz]
 97584086	Bracket for 2-sided mounting, including rubber seals	-4°F to 140°F [-20°C to 60°C]	Polyamide	76 g [2.68 oz]
 96000001	Bracket for base mounting with cable gland	-4°F to 122°F [-20°C to 50°C]	Polyamide	57 g [2.01 oz]
 96000002	Bracket for surface mounting with cable gland	-4°F to 122°F [-20°C to 50°C]	Polyamide	40 g [1.41 oz]
 96000014	Bracket for base mounting with concealed cable entry, including rubber seals	-4°F to 122°F [-20°C to 50°C]	Polyamide	80 g [2.82 oz]



Dimensions in mm [in.]



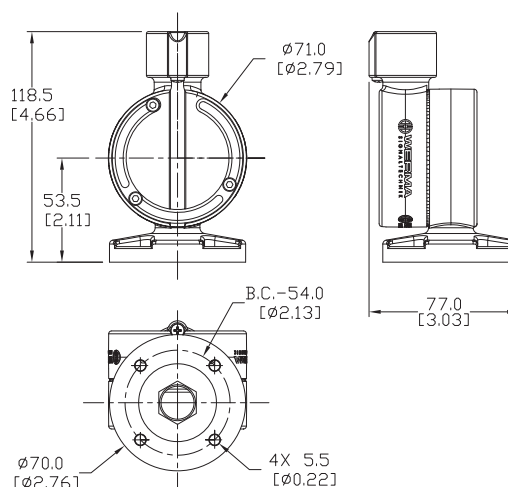
Foldaway Base for KS 71 and KS 50

- The signal tower can be folded away while still connected
- Minimizes packaging costs and optimizes machine transportation
- Simple mounting and cable entry – for up to 14 mm diameter cables
- Vertical alignment of signal towers even on sloping surfaces
- Positioning in 7.5° steps, markings for 30, 45, 60, or 90 degrees

Foldaway Base for KS 71 and KS 50		
Part Number	Technical Specifications	
96000030	Material	Polyamide Glass Fiber-Reinforced
	Cable Diameter	Max. 14 mm [0.55 in.]
	Assembly	Includes rubber seals
	Fixing	Vertical or horizontal positioning
	Weight	165 g [5.82 oz]



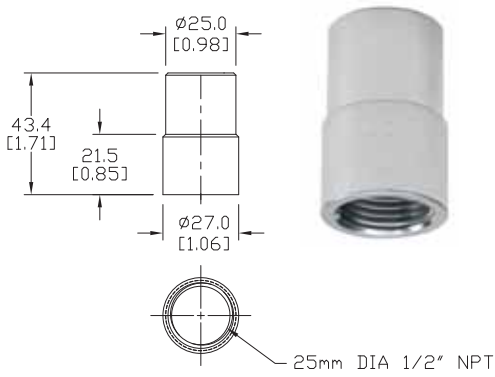
Dimensions in mm [in.]



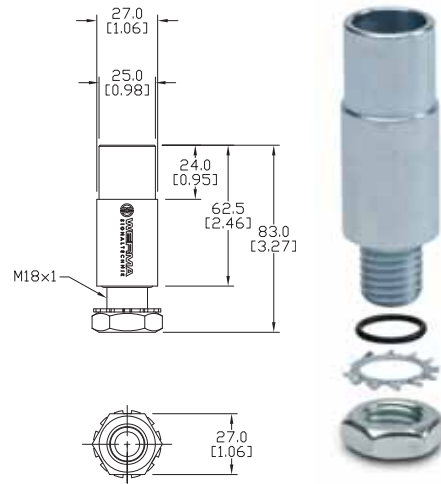
KS 71 Adapters Specifications

KS 71 Adapters Specifications			
Part Number	Description	Temperature Range	Weight
96000004	Cable gland for surface mounting	-4°F to 122°F [-20°C to 50°C]	10 g [0.35 oz]
96000025	Adapter for single hole mounting	-4°F to 122°F [-20°C to 50°C]	165 g [5.82 oz]
97584002	Adapter for tube mounting	-4°F to 122°F [-20°C to 50°C]	81 g [2.86 oz]

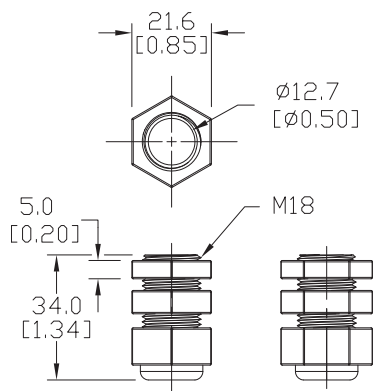
Dimensions in mm [in.]



97584002



96000025



96000004

Configuring Your KombiSIGN 71 Stack Light

▶ STEP 1

Select the required optical elements for your application

▶ STEP 2

Select the optional audible elements for your application



Optical Signal Elements

- Incandescent Permanent Light
- LED Permanent Light
- LED Flashing Light
- LED Blinking Light
- LED Rotating Light
- Xenon Flashing Light

Audible Signal Elements

- Buzzer Element
- Siren Element

Base Mounting

Tube Mounting

▶ STEP 3

Select the correct terminal element for your mounting option (includes cap)



Screw terminal
Order no. **64082000**


CAGE CLAMP® terminal
Order no. **64080000**

Screw terminal
Order no. **64083000**

CAGE CLAMP® terminal
Order no. **64081000**

▶ STEP 4

Where appropriate, select a base and the desired tube length (only for tube mounting)



Tube with clamp
Order no. **96000018**

Adapter for single hole mounting
Order no. **96000025**

Base with integrated tube
Order no. **97584010**

Tube Ø 25 mm, all anodized

100 mm long	97584510
250 mm long	97584025
400 mm long	97584040
600 mm long	97584060
800 mm long	97584080
1000 mm long	97584003

Base for Tube, plastic
Order no. **97584090**

Base for Tube, metal
Order no. **97584091**

Foldaway Base
Order no. **96000030**

Tube Ø 25 mm, plastic, only for Foldaway Base, 45 mm long
Order no. **96000031**

▶ STEP 5

Where appropriate, select the bracket and the contact box.



Contact box with side cable exit
Order no. **97584001**

Bracket for base mounting
Order no. **96000002**

Contact box with side cable exit
Order no. **97584001**

Contact box with magnetic base and side cable exit
Order no. **97584004**

Bracket for 1-sided mounting
Order no. **97584085**

Bracket for 2-sided mounting
Order no. **97584086**

Bracket for base mounting with concealed cable entry
Order no. **96000014**

Bracket for tube mounting
Order no. **96000001**