

# KS 71 Elements Quick Selection Guide

## STEP 1 - Optical Elements Quick Selection Guide

Type of Light	Part Number	Color	Operating Voltage	Price	Type of Light	Part Number	Color	Operating Voltage	Price
<b>Incandescent Permanent*</b>	64110000	Red	Depends on Bulb Selection	<-->	<b>Xenon Flashing Light</b>	64310055	Red	24V DC	<-->
	64120000	Green		<-->		64320055	Green		<-->
	64130000	Yellow		<-->		64330055	Yellow		<-->
	64140000	Clear		<-->		64340055	Clear		<-->
	64150000	Blue		<-->		64350055	Blue		<-->
<b>Incandescent Bulbs</b>	95584035	Clear	24V DC	<-->		64310067	Red	115V AC	<-->
	95584057	Clear	115V AC	<-->		64320067	Green		<-->
<b>LED Permanent</b>	64410075	Red	24V AC/DC	<-->		64330067	Yellow		<-->
	64420075	Green		<-->		64340067	Clear		<-->
	64430075	Yellow		<-->		64350067	Blue		<-->
	64440075	Clear		<-->	64411075	Red	24V AC/DC	<-->	
	64450075	Blue		<-->	64421075	Green		<-->	
	64410067	Red	115V AC	<-->	64431075	Yellow		<-->	
	64420067	Green		<-->	64441075	Clear		<-->	
	64430067	Yellow		<-->	64451075	Blue		<-->	
	64440067	Clear		<-->	64411067	Red	115V AC	<-->	
	64450067	Blue		<-->	64421067	Green		<-->	
64412055	Red	24V DC	<-->	64431067	Yellow	<-->			
64422055	Green		<-->	64441067	Clear	<-->			
64432055	Yellow		<-->	64451067	Blue	<-->			
64442055	Clear		<-->	64413075	Red	24V AC/DC	<-->		
64452055	Blue		<-->	64423075	Green		<-->		
		<-->	64433075	Yellow	<-->				
		<-->	64443075	Clear	<-->				
		<-->	64453075	Blue	<-->				

\* Note: Bulbs are required for permanent incandescent optical element

## STEP 2 - Audible Elements Quick Selection Guide

Part Number	Description	Voltage	Tone Frequency	Max. Volume	Price
64580075	Buzzer element	24V AC/DC	1.75 kHz	85 dB	<-->
64580077		115V AC			<-->
64582075	Multi-functional siren	24V AC/DC	1.6 / 3.4 kHz	100 dB	<-->
64582067		115V AC			<-->
64585055	Multi-functional siren, external trigger	24V DC	1.6 / 3.4 kHz	100 dB	<-->
64581055	Siren element with self-adjusting sound output	24V DC	2.5 kHz	100 dB	<-->

## STEP 3 - Terminal Elements Quick Selection Guide

Part Number	Description	Mounting	Price
64082000	Screw terminal with M3 clamps	Base Mounting	<-->
64080000	Terminal element with CAGE CLAMP® technology		<-->
64083000	Screw terminal with M3 clamps	Tube Mounting	<-->
64081000	Terminal element with CAGE CLAMP® technology		<-->

## STEP 4 - Tube Mounting/Accessories Quick Selection

Part Number	Description	Price
97584510	Anodized tube, 100 mm [3.94 in.] long	<-->
97584025	Anodized tube, 250 mm [9.84 in.] long	<-->
97584040	Anodized tube, 400 mm [15.75 in.] long	<-->
97584060	Anodized tube, 600 mm [23.62 in.] long	<-->
97584080	Anodized tube, 800 mm [31.49 in.] long	<-->
97584003	Anodized tube, 1000 mm [39.37 in.] long	<-->
96000018	Tube with clamp	<-->
96000025	Adapter for single-hole mounting	<-->
97584010	Base with integrated tube	<-->
97584090	Plastic base for 25 mm [0.98 in.] diameter tube	<-->
97584091	Metal base for 25 mm [0.98 in.] diameter tube	<-->
96000031	Plastic tube for foldaway base	<-->
97584002	Adapter for tube mounting	<-->
96000004	Cable gland for surface mounting	<-->
96000030	Foldaway base	<-->

## STEP 5 - Contact Boxes & Brackets Quick Selection Guide

Mounting Option	Part Number	Description	Price
Base Mounting	97584001	Contact box with side exit cable	<-->
	96000002	Bracket for base mounting	<-->
	97584085	Bracket for 1-sided mounting	<-->
	97584086	Bracket for 2-sided mounting	<-->
Tube Mounting	97584001	Contact box with side exit cable	<-->
	97584004	Contact box w/ magnetic base and side cable exit	<-->
	96000014	Bracket for base mounting w/ concealed cable entry	<-->
	96000001	Bracket for tube mounting	<-->

# Werma Modular Stack Lights Overview



## Description

WERMA's modular stack light system offers total choice and flexibility as it allows for a completely free combination of optical and audible signal elements. The bayonet mechanism allows elements to be mechanically and electrically connected within seconds. This means that elements can be safely and easily changed (contact-voltage proof) without the need for tools.

Typical product applications include; machine tools, packaging machines, conveyor systems, printing machines, loading docks, retail centers (check outs), queuing indicators for theme parks, and more.

## Product highlights:

- Signal elements in common voltages (24V DC and 115V AC)
- Modular system allows combination as required
- Two different sizes (70 and 50 mm diameter)
- Five colors available
- Wide range of audible elements
- Diverse and flexible solutions

## Simple assembly with bayonet mechanism

- Simple mounting and removal of the elements
- New combinations at the twist of a hand
- Tool-free bulb change
- Position marks to guide alignment



# Werma Stack Lights Family Overview

## KombiSIGN 71

Modular IP65-rated stack light system with **70 mm diameter** for use in standard applications.

KS 71 stack lights are available in 5 colors and multiple light effects (permanent, blinking, rotating, flashing). Multiple light sources (incandescent, LED, Xenon tube) and a wide variety of mountings are available. Combine up to 5 elements per terminal. Various terminal design choices are available as well as multiple voltages and audible elements up to 105 dB.

### KS 71 Terminal Elements



Screw terminals



CAGE CLAMP® terminals

## KombiSIGN 50

Modular IP54-rated stack light system with **50 mm diameter** for use on smaller machines.

KS 50 stack lights are available in 5 colors with either permanent or blinking light effects in multiple voltages. A choice of incandescent or LED light sources is available as well as an 80 dB audible element. Elements can be combined in a variety of mountings, up to 4 elements per mounting for 360° of visibility.

### KS 50 Terminal Element

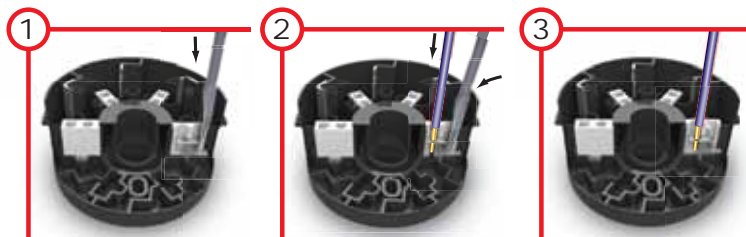


Screw terminal



## Safe and efficient connection thanks to CAGE CLAMP® technology

Terminal elements with CAGE CLAMP® technology enable leads to be quickly and easily wired, guaranteeing a secure and reliable contact.



1. Insert screwdriver at a slight angle into opening as far as possible.

2. Open spring-loaded clamp with the help of the screwdriver and insert wire as far as possible.

3. Remove screwdriver - the wire is firmly clamped.

CAGE CLAMP® is a registered trademark of WAGO Kontakttechnik GmbH.

# Configuring Your KombiSIGN 71 Stack Light

## ▶ STEP 1

Select the required optical elements for your application

## ▶ STEP 2

Select the optional audible elements for your application



**Optical Signal Elements**

- Incandescent Permanent Light
- LED Permanent Light
- LED Flashing Light
- LED Blinking Light
- LED Rotating Light
- Xenon Flashing Light

**Audible Signal Elements**

- Buzzer Element
- Siren Element

### Base Mounting

### Tube Mounting

## ▶ STEP 3

Select the correct terminal element for your mounting option (includes cap)



Screw terminal  
Order no. **64082000**


CAGE CLAMP® terminal  
Order no. **64080000**

Screw terminal  
Order no. **64083000**

CAGE CLAMP® terminal  
Order no. **64081000**

## ▶ STEP 4

Where appropriate, select a base and the desired tube length (only for tube mounting)



Tube with clamp  
Order no. **96000018**

Adapter for single hole mounting  
Order no. **96000025**

Base with integrated tube  
Order no. **97584010**

Tube Ø 25 mm, all anodized

100 mm long	<b>97584510</b>
250 mm long	<b>97584025</b>
400 mm long	<b>97584040</b>
600 mm long	<b>97584060</b>
800 mm long	<b>97584080</b>
1000 mm long	<b>97584003</b>

Base for Tube, plastic  
Order no. **97584090**

Base for Tube, metal  
Order no. **97584091**

Foldaway Base  
Order no. **96000030**

Tube Ø 25 mm, plastic, only for Foldaway Base, 45 mm long  
Order no. **96000031**

## ▶ STEP 5

Where appropriate, select the bracket and the contact box.



Contact box with side cable exit  
Order no. **97584001**

Bracket for base mounting  
Order no. **96000002**

Contact box with side cable exit  
Order no. **97584001**

Contact box with magnetic base and side cable exit  
Order no. **97584004**

Bracket for 1-sided mounting  
Order no. **97584085**

Bracket for 2-sided mounting  
Order no. **97584086**

Bracket for base mounting with concealed cable entry  
Order no. **96000014**

Bracket for tube mounting  
Order no. **96000001**