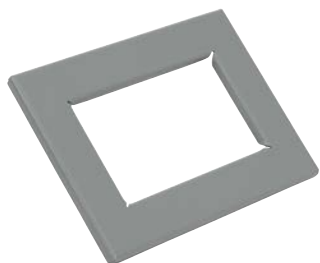


# Enclosure Accessories – Window Kits



WAPWK0503NF



WAPWK0503SS

## Construction

- Steel has ANSI 61 gray powder coat finish
- 304 Stainless steel has grained finish
- Makrolon polycarbonate window
- Integral closed-cell gasket and mounting hardware
- Steel windows for indoor use with NEMA 12
- Stainless steel windows for indoor use with NEMA 12 and 13 enclosures

## Applications

Window kits are easily installed by making a cutout in the enclosure and attaching the window and frame in place. All necessary hardware is included. Kits are fully gasketed to maintain a NEMA 12/ NEMA 13 oil-tight seal.

### Shipping Schedule

Same day 1 - 5 days 1 - 7 days 1-10 days 1 - 15 days 1 - 20 days

Color indicates shipping lead time in business days.

ANSI 61 Gray Steel	Price	Wt.[lb]	Window Size	Frame Size	Required Cutout Size
<a href="#">WAPWK0503NF</a>	\$150.00	2.2	5.00 x 3.00 [127 x 76]	7.50 x 5.50 [191 x 140]	6.69 x 4.69 [170 x 119]
<a href="#">WAPWK0905NF</a>	\$181.00		9.00 x 5.50 [229 x 140]	11.50 x 8.00 [292 x 203]	10.69 x 7.19 [272 x 183]

Notes: Dimensions in inches [millimeters].