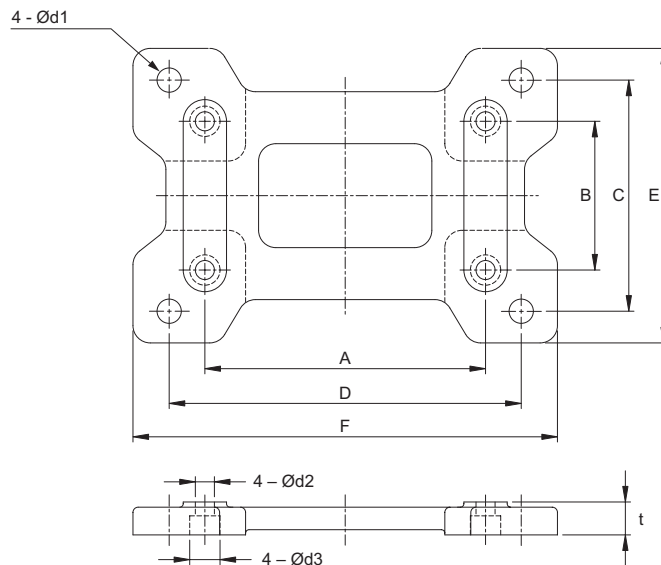


IronHorse™ Worm Gearboxes

Accessories – Mounting Base Specifications & Dimensions



IronHorse™ Worm Gearbox Mounting Bases													
Part Number	Price	Fits Gearbox Numbers	Approx Weight (lb)	Dimensions (in)									
				A	B	C	D	E	F	t	d1	d2	d3
WG-175-BASE	<--->	WG-175-xxx-x	4.0	4.19	2.76	4.50	5.75	5.69	7.00	0.69	0.43	0.35	0.55
WG-206-BASE	<--->	WG-206-xxx-x	4.8	5.00	2.88	4.69	6.38	5.91	7.76	0.72	0.47	0.43	0.69
WG-237-BASE	<--->	WG-237-xxx-x	6.2	5.00	2.88	4.88	7.06	6.22	8.50	0.75	0.47	0.43	0.69
WG-262-BASE	<--->	WG-262-xxx-x	7.5	6.38	3.38	5.25	8.00	6.69	9.65	0.75	0.55	0.43	0.69

Worm Gearbox Cross Reference

IronHorse™ Worm Cross Reference				
AutomationDirect IronHorse™	WG-175-xxx-x	WG-206-xxx-x	WG-237-xxx-x	WG-262-xxx-x
Alling Lander	17UF	20UF	23UF	26UF
Baldor	F918	F921	F924	F926
Boston	F718	F721	F724	F726
Browning-Raider	Q175	Q206	Q237	Q262
Dodge-Tigear	Q175	Q200	-	Q262
Falk-Omnibox	1175WBM	1206WBM	1238WBM	1262WBM
Grove (new)	BMQ218	BMQ220	BMQ224	BMQ226
Grove (old)	BMQ1175	BMQ1206	BWQ1238	BMQ1262
Leeson	BMQ618	BMQ621	BMQ624	BMQ626
Morse Invader	718F	721F	724F	726F
Ohio Gear	BMQ2175	BMQ2206	BMQ2238	BMQ2262