

# Motion Control

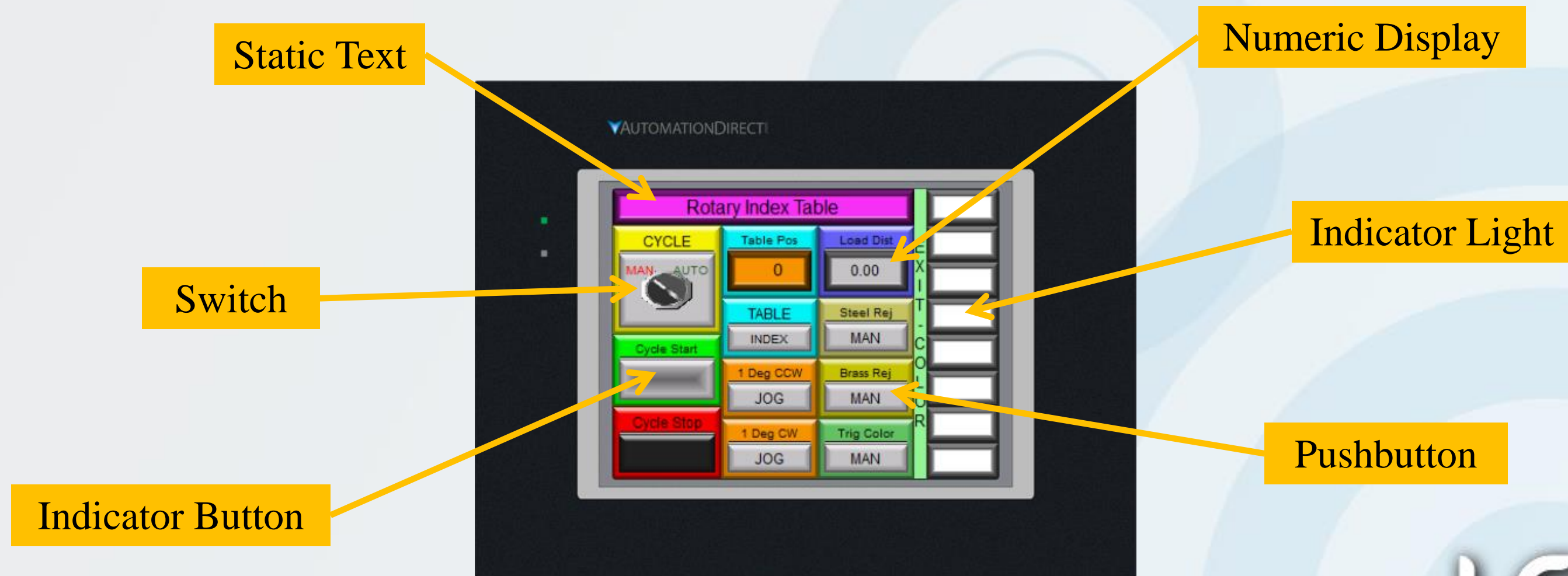
Do-more H2 Series PLC to  
*SureStep* Stepping System  
with *C-more* Touch Panel (HMI)

Rotary Index Table Station  
Part 4 of 5

*C-more* Touch Panel Programming

## C-more Touch Panel (HMI) – Objects

The *C-more* Touch Panel used in the Motion Control consists of just one screen for simplicity. The HMI used is **AutomationDirect's** part number EA9-T6CL. Although the *C-more* has a ton of features, very few objects were needed for this demonstration. The only objects used were the Switch, Indicator Button, Pushbutton, Numeric Display, Indicator Light, and Static Text objects.



EA9-T6CL



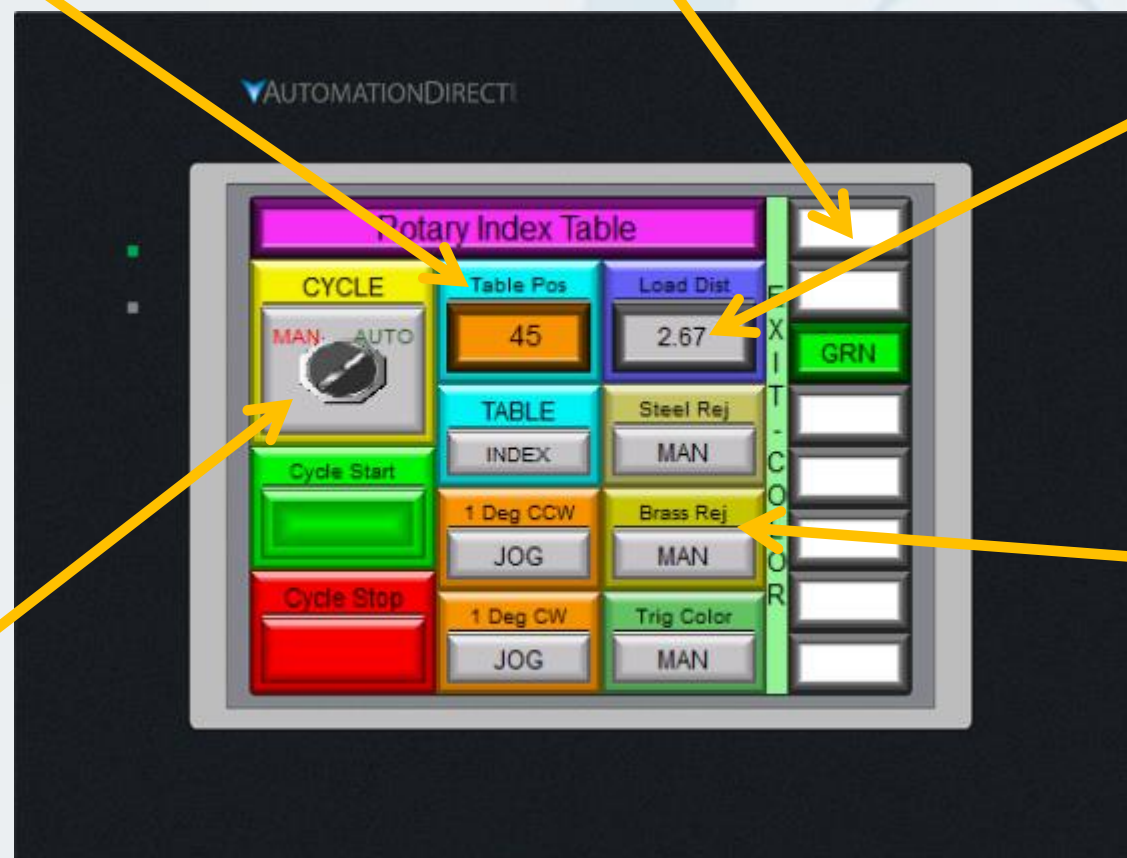
## C-more Touch Panel (HMI) – Arrangement

Control of the Rotary Index Table from the *C-more* Touch Panel can be broken down into a couple of categories that will allow a better understanding on how the objects were arranged.

**Table Position** consists of the rotary disk position readout, the Index pushbutton and the CCW and CW Jog pushbuttons to manually position rotary disk.

**Exit Color** shows the eight possible colors of the parts exiting the system.

**Part Loaded** includes the display of the distance from the Laser Distance Sensor to the loaded part.



**Cycle Control** includes the Manual/Auto selector switch along with the Cycle Start & Stop pushbuttons.

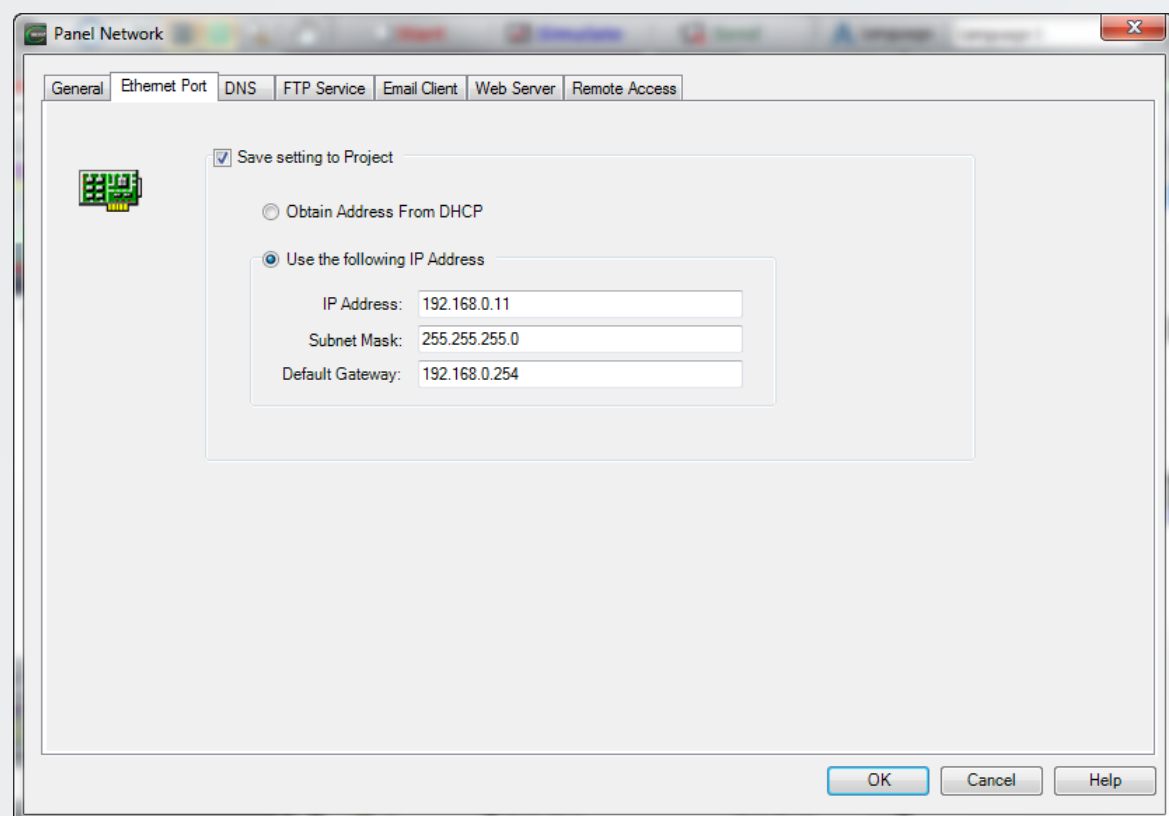
**Manual Control** includes the Steel & Brass Marble Reject pushbuttons and the Trigger Color Sensor PB.

EA9-T6CL

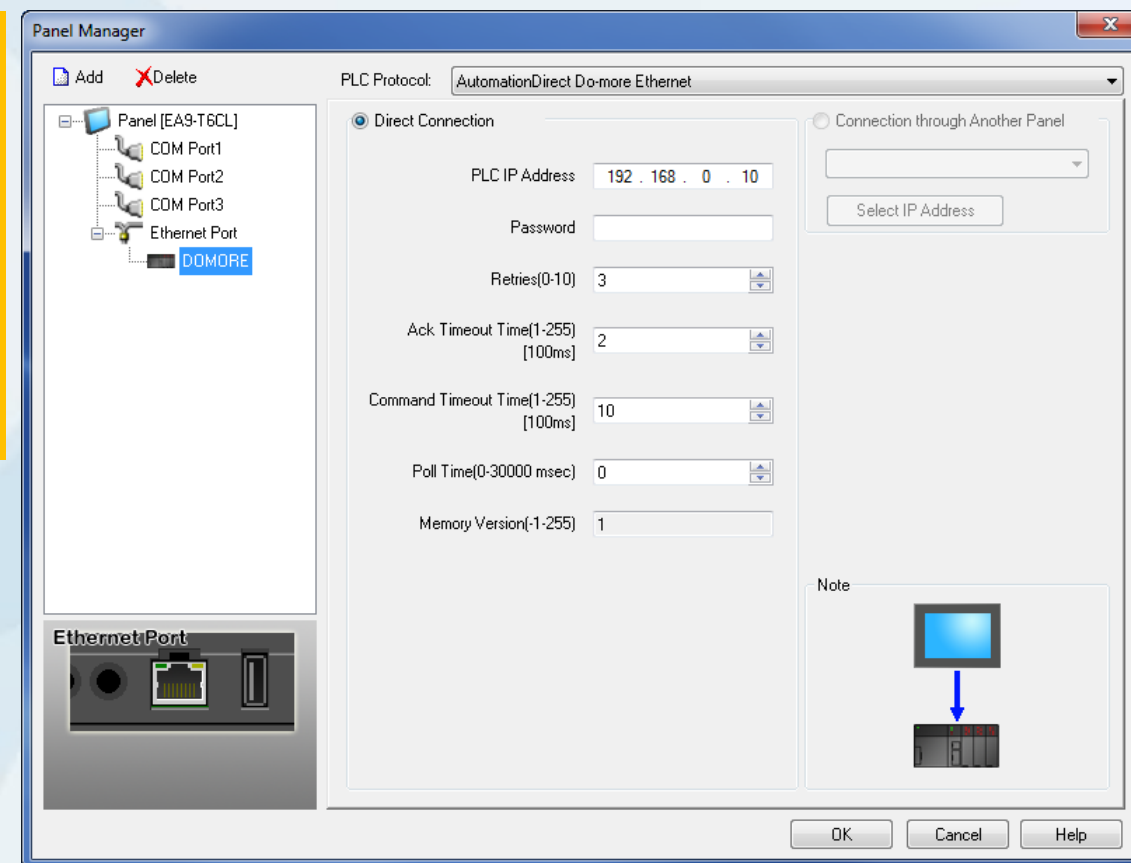
## C-more Touch Panel (HMI) – Ethernet Port

Just a quick look at how to set up communicating with the **Do-more** PLC via Ethernet. For reference, the PC used via a Stride Ethernet Switch to program both the **C-more** and **Do-more** was setup with an IP Address of 192.168.0.9. The **C-more** was assigned IP Address 192.168.0.11, while the **Do-more** was assigned IP Address 192.168.0.10.

Click Panel Network located under the Setup tab, and then click on the Ethernet Post.



Click Panel Manager located under the Setup tab, and then select AutomationDirect Do-more Ethernet.



## C-more Touch Panel (HMI) – Information

The *C-more* Touch Screen Interface Panel used in the example application consists of just one screen for simplicity. The HMI panel used in the example application is a 6-inch color TFT, ADC part number EA9-T6CL.

There is additional information in regards to the *C-more* Touch Panel and *C-more* Programming Software at the C-more Website. A link to the site is shown below.

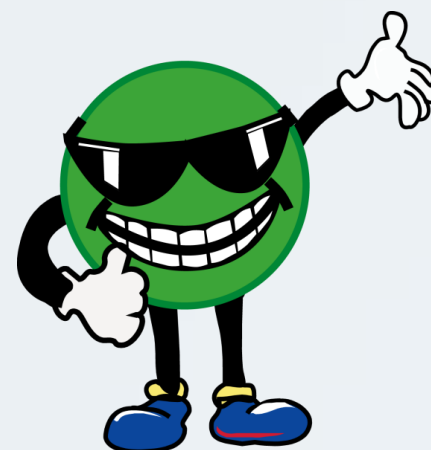


Link to *C-more* Touch Panel Web site: <http://bit.ly/294TIM2>

The *C-more* project that was created for this Motion Control demonstration is fully commented and can be downloaded for your review. See the Note to the right.



**NOTE:** A complete commented *C-more* Touch Panel project for the Motion Control demo presented here is available for downloading from the **AutomationDirect** Video Tutorial website. Look for the note that says Related Documents.



**NOTE:** *C-more* Programming Software Version 6.20, Firmware Version 6.20 used on this demo.



## Other available videos in this series on Motion Control.

Title	VID Number
Part 1 of 5 – Control System Overview.	L-PC-DM-STP-CM-001-1
Part 2 of 5 – Schematic Diagrams.	L-PC-DM-STP-CM-001-2
Part 3 of 5 – <b>Do-more</b> Ladder Logic Programming.	L-PC-DM-STP-CM-001-3
Part 5 of 5 – Operational Demonstration.	L-PC-DM-STP-CM-001-5

Please note!

ALL AUTOMATIONDIRECT VIDEOS AND ASSOCIATED TRAINING SUPPLIES PROVIDED IN CONNECTION THEREWITH (the “Materials”), ARE SUPPLIED “AS IS”. These Materials are provided by our associates to assist others in learning the products we sell and service. We make no representation, warranty or guaranty, whether expressed, implied or statutory, regarding the Materials, including without limitation, implied warranties of merchantability or fitness for a particular purpose. We make no representation, warranty or guaranty that the Materials will be accurate, complete, uninterrupted, error free or non-infringing, or are suitable for your particular application, nor do we assume any responsibility for the use of this information in your application.