

Productivity^{3000™}

Software Overview

by Product Manager Jeff Payne
Part 4 of 4

Video Time Index – Part 4 of 4

00:10.00 – Data Logger – Stop Logging, Remove Pen Drive and View Data

03:53.16 – PID Loops

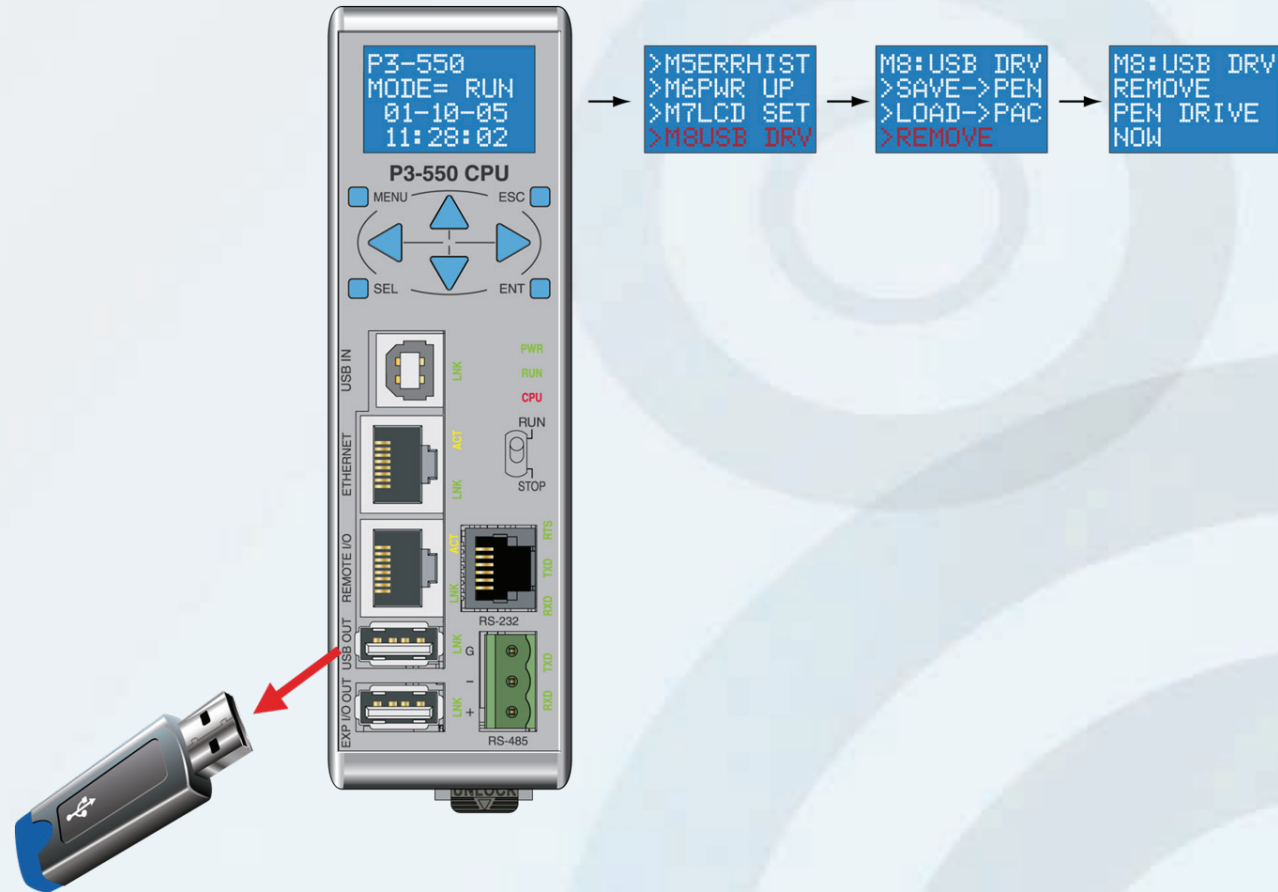
06:13.08 – Math Instruction

08:14.06 – Data Logger – look at the logged data CSV file



Data Logger – Stop Logging, Remove Pen Drive and View Data.

- Turn the 'Logdata' tag name off using 'Data View' to stop logging Data.
- Remove Pen Drive from CPU and plug into PC's USB port.
- Look at the 'CSV' file in the 'LOGS' folder on the pen drive.
- First attempt only produced one data entry because the Data Logging event is edge triggered.
- Setup new Data Logging triggering 'Logdata' tag name with a 2 second bit.



PID Loops.

Major Loop:

- Setup, Advanced & Alarms

Cascade Mode:

- Minor Loop Setup, Advanced & Alarms

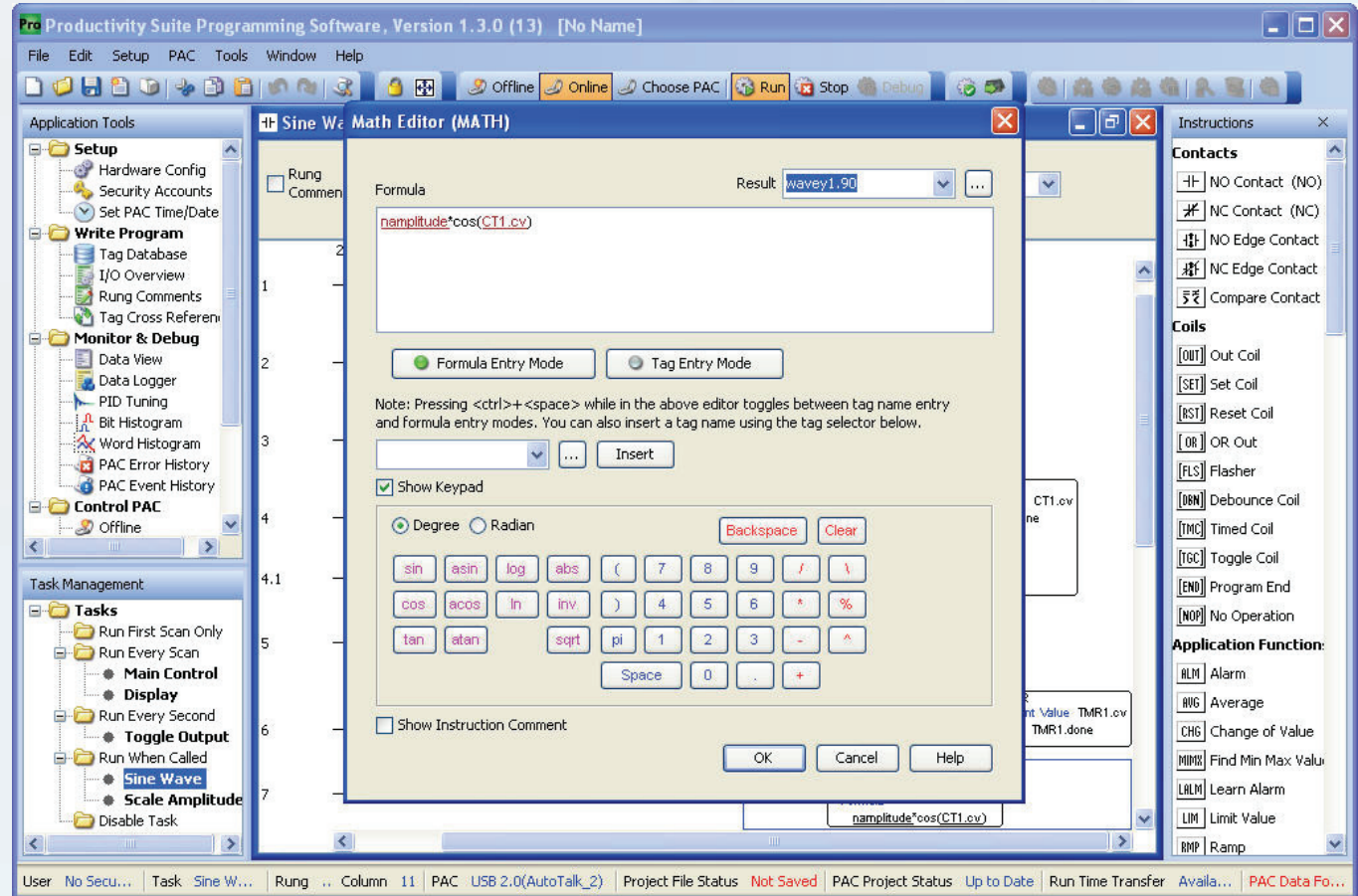
PID Online Help

Instruction Parameters	Parameter	Parameter Type	Requirements	Description
				Level-driven.



Math Instruction.

- Similar to Window's Calculator allowing free form entry of formulas and Tag Names.
- Switch between Formula Entry Mode and Tag Name Data Entry Mode.
- Color coded to distinguish between the different types of data that has been entered.
- Enter data by typing in by hand or use built-in keypad.



Data Logger – look at the logged data CSV file.

- Remove Pen Drive from CPU and plug into PC's USB port.
- Look at the 'CSV' file in the 'LOGS' folder on the pen drive.
- Date and Time Stamps for each entry.
- 'Clock Minutes' and 'Clock Seconds' are shown for each entry.
- Using a 2 Second time bit produces an entry every other second.

1	Date	Time	Clock Minutes	Clock Seconds
2	2/1/2011	13:48:01.751	48	1
3	2/1/2011	13:48:03.130	48	3
4	2/1/2011	13:48:05.130	48	5
5	2/1/2011	13:48:07.130	48	7
6	2/1/2011	13:48:09.130	48	9
7	2/1/2011	13:48:11.130	48	11
8	2/1/2011	13:48:13.130	48	13
9	2/1/2011	13:48:15.130	48	15
10	2/1/2011	13:48:17.130	48	17
11	2/1/2011	13:48:19.130	48	19
12	2/1/2011	13:48:21.130	48	21
13	2/1/2011	13:48:23.130	48	23
14	2/1/2011	13:48:25.130	48	25
15	2/1/2011	13:48:27.130	48	27
16	2/1/2011	13:48:29.130	48	29
17	2/1/2011	13:48:31.130	48	31
18	2/1/2011	13:48:33.130	48	33
19	2/1/2011	13:48:35.130	48	35
20	2/1/2011	13:48:37.130	48	37
21	2/1/2011	13:48:39.130	48	39
22	2/1/2011	13:48:41.130	48	41
23	2/1/2011	13:48:43.130	48	43



Please note.

Learn.AutomationDirect.com is an online streaming tutorial site offering training and information on a wide range of practical automation products.

THE LEARN.AUTOMATIONDIRECT.COM WEBSITE, AND THE TRAINING AND INFORMATION PROVIDED IN CONNECTION THEREWITH, IS SUPPLIED "AS IS". These video presentations and other documents are provided by our associates to assist others in learning the products we sell and service. We make no representation, warranty or guaranty, whether expressed, implied or statutory, regarding the LEARN.AUTOMATIONDIRECT.COM website on the training, information and the content, including without limitation, the implied warranties of merchantability or fitness for a particular purpose, and any representation, warranty or guaranty that the foregoing will be accurate, complete, uninterrupted error free or non-infringing, is suitable for your particular application, nor do we assume any responsibility for the use of this information in your application.

User suggestions, corrections and feedback are not only welcomed, but are essential to the maintenance of current content and the creation of new content. If there is a training idea, or correction to an existing presentation you would like us to consider, please complete and submit the suggestion form that is shown as a "[Suggestions](#)" link at the bottom of every page.

Thank you!