

INSTALLATION INSTRUCTIONS FOR SAFETY DOOR INTERLOCK CATALOG NUMBERS C361KJ4, C361KJ6, C361KR

NOTES:

1. The C361 Safety Door Hardware Kits are designed to function with all C361 disconnect switches and C371 circuit breaker operating mechanisms.
2. The door hardware kits are (C361KJ4 and C361KJ6) are supplied with two rollers and are designed for use with small enclosures up to 40 inches tall. Enclosures 40 to 60 inches tall and large floor cases, the addition of a 3rd roller (C361KR) is recommended.
3. These kits can be used on enclosure flanges with material thickness ranging from 16 gauge through 3/16 inches with flange on right hand side only.
8. Attach roller latch assembly (Item 7) see sketch on page 2 and the .062 inch thick shim spacer (Item 9) to the roller latch plate with the two #10-32 x .625 screw assemblies (Item 32). Close the door and turn the handle to the locked position to check for tightness of the seal. It may be necessary to add or subtract shims (Items 8 and 10) to insure a proper seal.
9. Find the bag containing the upper roller latch assembly. If pivot post (Item 3) and screw (Item 1) are provided by enclosure manufacturer, discard Items 1, 2 and 3. Otherwise insert screw (Item 1) with "O" ring (Item 2) through the door and pivot post as shown in Figure 3.

INSTRUCTIONS

1. Verify all minimum enclosure and door dimensions required from Figure 1 and from the instruction sheet supplied with the disconnecting means being installed.
2. If flange holes and slots are already provided in the enclosure, from Figure 1, determine the hole locations in the door to secure the door handle assembly, the top roller assembly, and when thjree point latching is required, the bottom roller kit. If flange holes and slots are not provided, locate flange drilling from Figure 1 after door hole locations have been determined. Then, drill flange per the instruction sheet provided with the disconnecting means.
3. Determine the door hook location per Figure 1 and weld or bolt to enclosure door as required.
4. If latching rod is not provided by enclosure manufacturer, drill and tap a bar of .500 x .250 mill steel per Figure 2. Establish the length of the rod by measuring dimension "B" (for 2 pt. latching) or dimension "A" (for 3 pt. latching) from Figure 1, then add 1/2 inch to this dimension.
10. Place roller latch plate (Item 11) over pivot post and secure with flat washer (Item 4), the 1/4-20 hex nut (Item 5) and the 1/4 helical lockwasher (Item 6) as shown in Figure 3. If a hex nut/washer assembly is provided with enclosure, discard Items 4, 5 and 6.
11. Attach roller latch assembly (Item 7) and shim (Item 9) to latch plate as in Step 8 above.
12. If the third roller kit (Item 33) is used for 3 pt. latching, repeat Steps 9, 10 and 11 for installing the lower latch assembly.
13. Attach the latching rod (Item 31) to the two (or three) roller latch plates with the pins (Item 26) and the "E" rings (Item 27) as shown in Figure 3.
14. Then, attach bracket defeater (Item 28) to the latching rod with the two #10-24 x .38 screws (Item 29) and the #10 lockwashers (Item 30) as shown in Figure 3. Adjust so that bottom edge of defeater extends slightly below the tip of the door hook when handle is in the locked position.
15. Make sure all fasteners are tightened securely.

ADJUSTMENTS

1. Close the enclosure door and turn the handle slowly counterclockwise until the first tooth on the latch plate is engaged. Be sure the gasket is sealed at this point. Try to engage the disconnecting means operating handle to the "ON" position. Further adjustment of the defeater may be required if disconnect handle can be moved to the "ON" position.
2. To open the door with the disconnecting means in the "OFF" position, turn the release screw above the door handle counterclockwise and hold. Simultaneously turn the handle clockwise and pull to open door.
3. To open the door with the disconnecting means in the "ON" position, follow Step 2 above. The door should only open partially until the door hook engages the operating handle defeater hasp. Maintain force on the door handle and turn the defeater screw in the operating handle. The door should then fully open.

Refer to Figure 3 and 4 for the following steps.

5. Find the bag containing the handle assembly parts. Install the mounting plate assembly (Item 24) and gasket (Item 25) to enclosure door with the two bushings (Items 21 and 22) as shown in Figure 3. **NOTE:** Handle (Item 19) and mounting plate assembly (Item 24) are wrapped separately.
6. Insert the pin (Item 16) with "O" ring (Item 23) into upper bushing (Item 22). Position silver spring (Item 12) over bushing and attach to flag (Item 13) per Figure 4. Secure flag to pin with 5/16-18 hex nut and 5/16 helical lockwasher (Items 14 and 15).
7. Insert handle (Item 19) with "O" ring (Item 20) through the lower busing (Item 21). Position the green spring (Item 18) over bushing and attach to the roller latch plate (Item 17) per Figure 4. Secure the latch plate to handle with the 5/16-18 hex nut and 5/16 lockwasher (Items 14 and 15). Turn the handle to the locked position to make sure the flag and latch plate teeth engage when handle is turned.

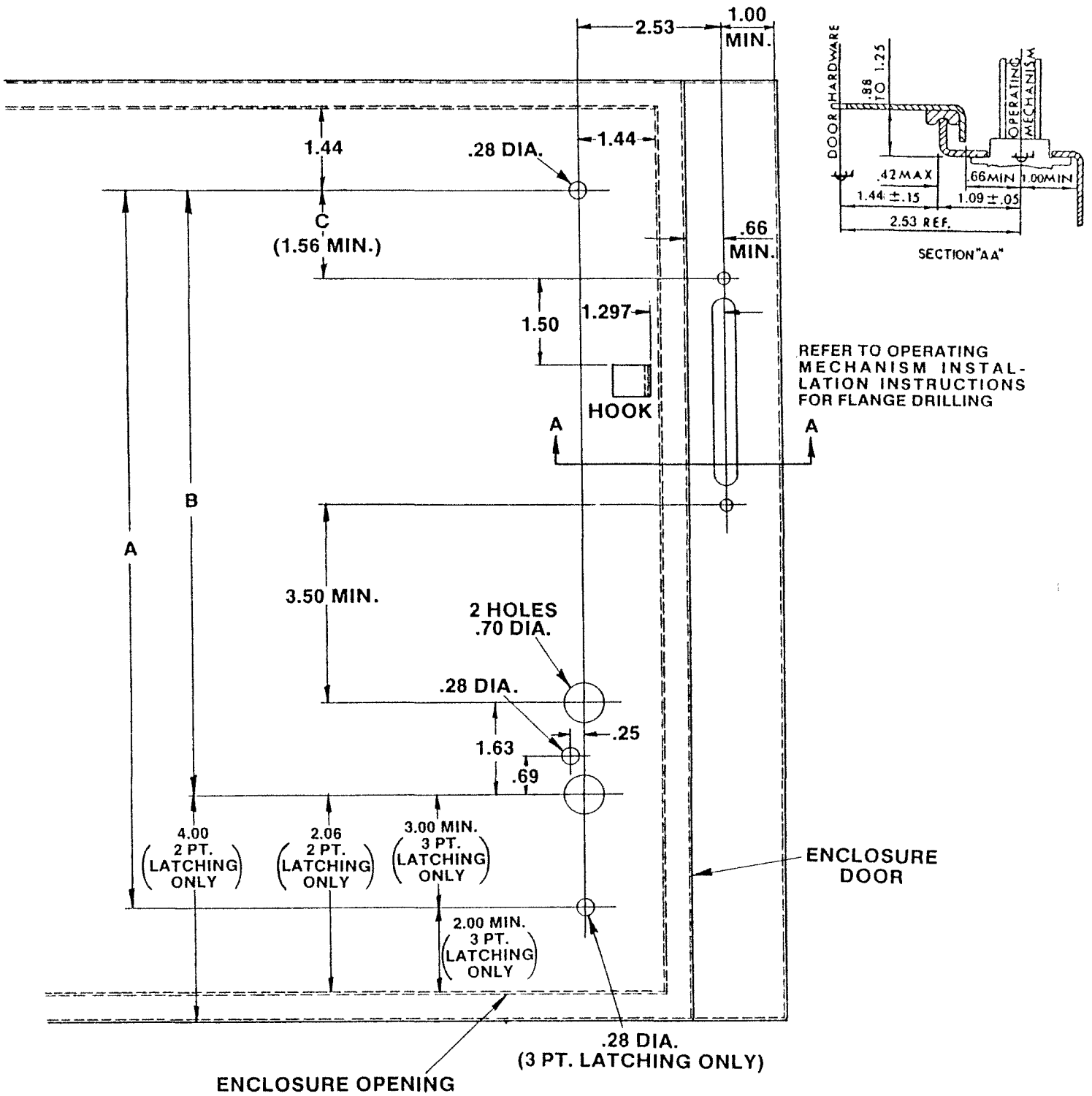
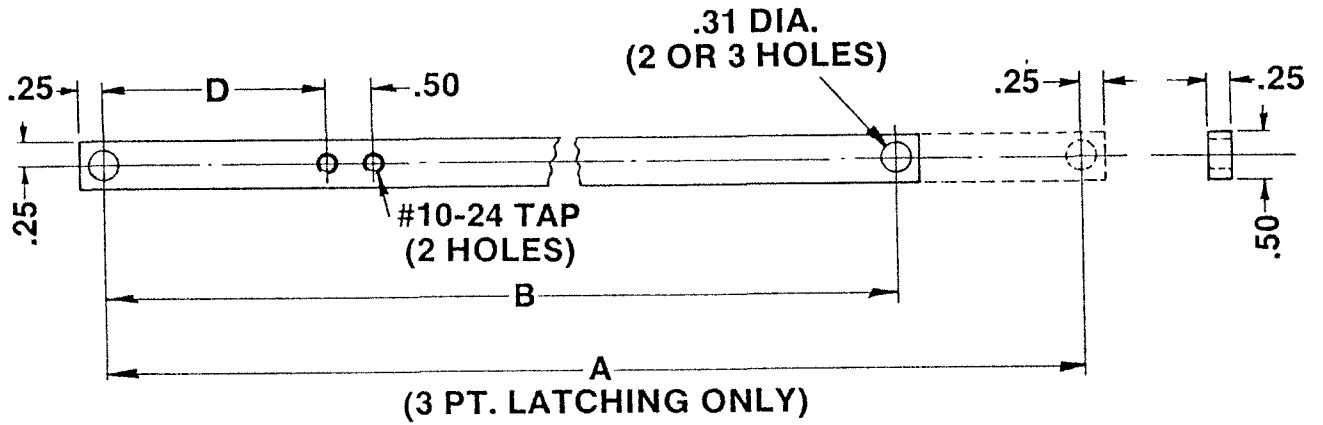


Figure 1



$D = 1.34 + C$

LATCHING ROD FOR 2 OR 3 POINT LATCHING

Figure 2

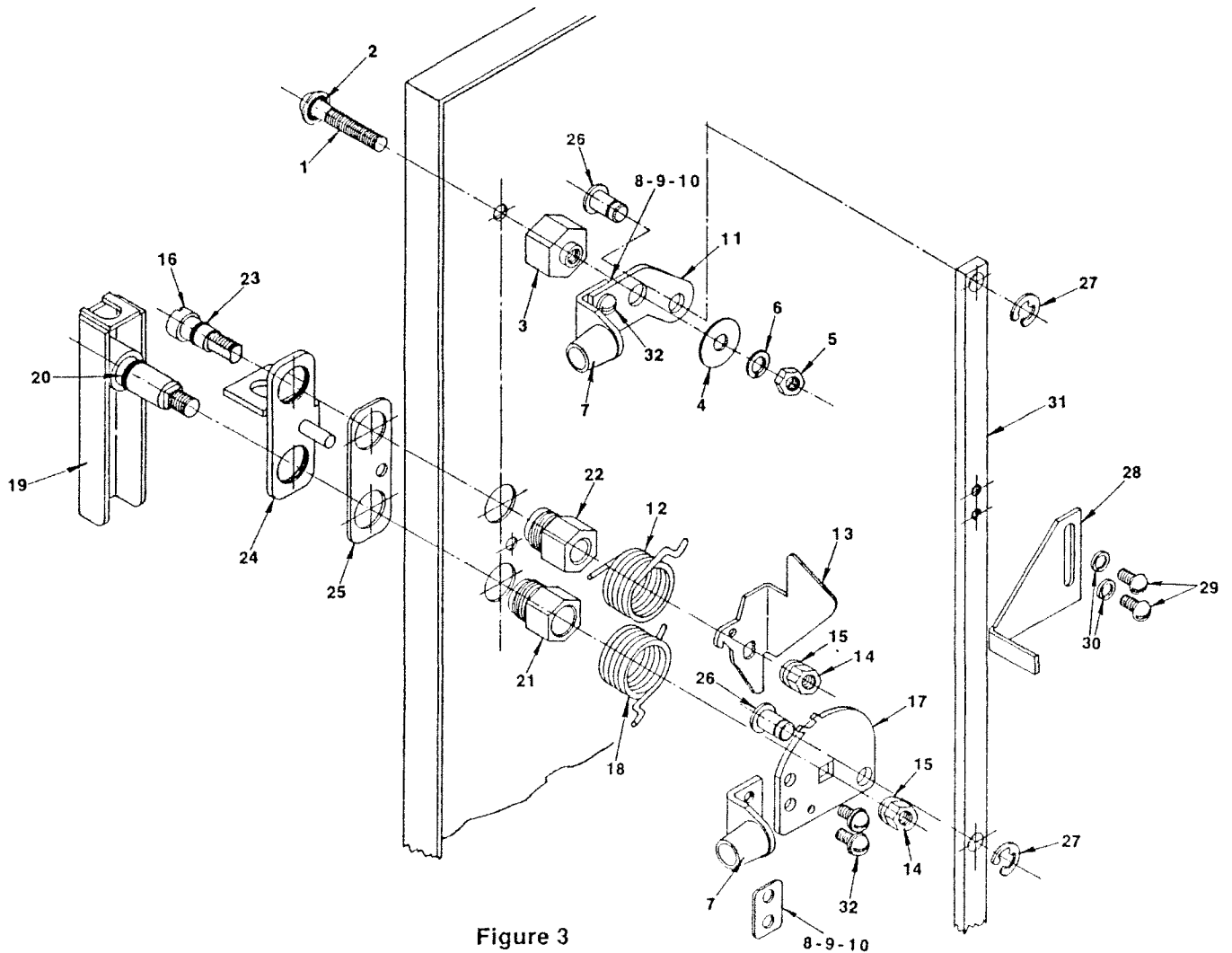


Figure 3

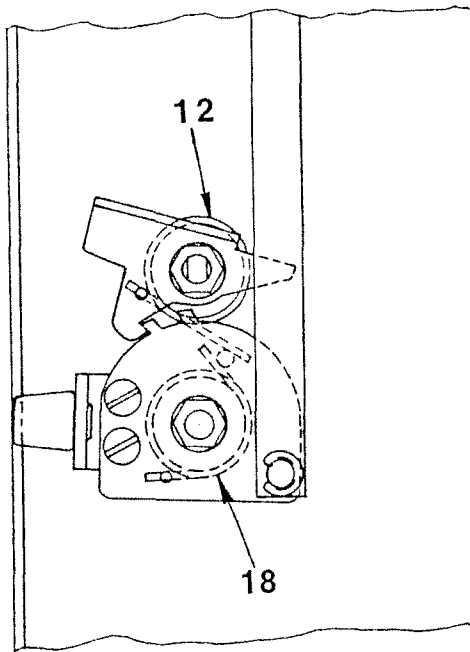


Figure 4

PARTS LIST			
ITEM	DESCRIPTION	QTY.	PART NO.
* 1	Screw	1	11-2947
* 2	"O" Ring	1	32-239-28
* 3	Pivot Post	1	18-2986
* 4	Flat Washer	1	16-3768
* 5	1/4-20 Hex Nut	1	915-24Z
* 6	1/4 Helical Lockwasher	1	916-682Z
7	Roller Latch Assembly	2	52-2736
8	Shim Spacer (.125 thick)	2	16-3775
9	Shim Spacer (.062 thick)	2	16-3775-3
10	Shim Spacer (.032 thick)	2	16-3775-5
11	Roller Latch Plate	1	52-2733
12	Spring (silver)	1	69-5014
13	Flag	1	52-2735
14	5/16-18 Hex Nut	2	915-803Z
15	5/16 Helical Lockwasher	2	916-198
16	Pin	1	13-7839
17	Roller Latch Plate	1	52-2734
18	Spring (green)	1	69-5013
19	Handle Assembly (4 inch)	1	53-3053
	Handle Assembly (6 inch)		53-3053-2
20	"O" Ring	1	32-239-6
21	Bushing	1	29-6089
22	Bushing	1	29-6090
23	"O" Ring	1	32-239-24
24	Mounting Plate Assembly	1	17-19137
25	Gasket	1	32-1792
26	Pin	2	13-7841
27	"E" Ring	2	28-707-20
28	Defeater Bracket	1	52-2738
29	#10-24 x .38 Screw	2	911-612Z
30	#10 Lockwasher	2	916-165
▲31	Latching Rod	1	-----
32	#10-32 x .625 Screw Assembly	4	11-2134
●33	Third Roller Kit	1	C361KR

- * Discard, if provided with enclosures.
- ▲ Not provided with C361 Kit.
- For 3 point latching only.