

# ACCESSORIES

---



# CHAPTER 3

## In This Chapter...

Accessories .....	3-2
Accessories Overview.....	3-3
Accessories at a Glance .....	3-4
AC/DC Power Adapter – EA-AC .....	3-5
Expansion Assembly – EA-EXP-OPT.....	3-9
CF Card Interface Module – EA-CF-IF.....	3-12
CompactFlash Memory – EA-CF-CARD.....	3-14
6" Adapter Plate – EA-6-ADPTR .....	3-17
D-SUB 15-pin 90 degree Comm Port Adapter – EA-ADPTR-4.....	3-19
D-SUB 15-pin to Terminal Block Adapter – EA-COMCON-3.....	3-20
Non-glare Screen Covers – EA-xx-COV2, xx = 6, 8, 10, 12 or 15 .....	3-22

## Accessories

Part Number	Description	Part Number	Description
EA-AC	The AC/DC Power Adapter, EA-AC, is for <b>C-more</b> touch panels only, and is powered from a 100-240 VAC, 50/60 Hertz power source. The adapter provides 24 VDC @ 1.5 A. Power Fault features help protect data being logged to CompactFlash during power failures. The <b>C-more</b> panel must have firmware version 1.21 Build 6.18E or higher for proper operation.	EA-COMCON-3	D-SUB 15-pin to 6-terminal PLC serial communication port adapter to allow wire terminal connections for RS-422/485 PLC communication cable.
EA-EXP-OPT	Expansion Assembly, is used to allow installation of the optional CF Card Interface Module for CF card use and also provides a slot for future option modules.	EA-6-COV2	Non Glare 6 Inch Screen Cover, protective overlay used to protect the touch screen while helping to reduce the glare from external light sources. (pk of 3)
EA-CF-IF	CF Card Interface Module, is used with the Expansion Assembly to allow use of CF cards, such as the CompactFlash Memory, p/n EA-CF-CARD.	EA-8-COV2	Non Glare 8 Inch Screen Cover, protective overlay used to protect the touch screen while helping to reduce the glare from external light sources. (pk of 3)
EA-CF-CARD	CompactFlash Memory Card Option, industrial grade, high speed memory for non-volatile storage.	EA-10-COV2	Non Glare 10-Inch Screen Cover, protective overlay used to protect the touch screen while helping to reduce the glare from external light sources. (pk of 3)
EA-6-ADPTR	6 Inch Adapter Plate, allows C-more 6" touch panels to be mounted into EZTouch 6" non-slim bezel cutouts without having to make alterations. NEMA 4/4X.	EA-12-COV2	Non Glare 12-Inch Screen Cover, protective overlay used to protect the touch screen while helping to reduce the glare from external light sources. (pk of 3)
EA-ADPTR-4	D-SUB 15-pin 90 degree PLC serial communication port adapter to allow a PLC communication cable to be plugged in at a 90 degree angle to reduce panel depth requirements.	EA-15-COV2	Non Glare 15-Inch Screen Cover, protective overlay used to protect the touch screen while helping to reduce the glare from external light sources. (pk of 3)



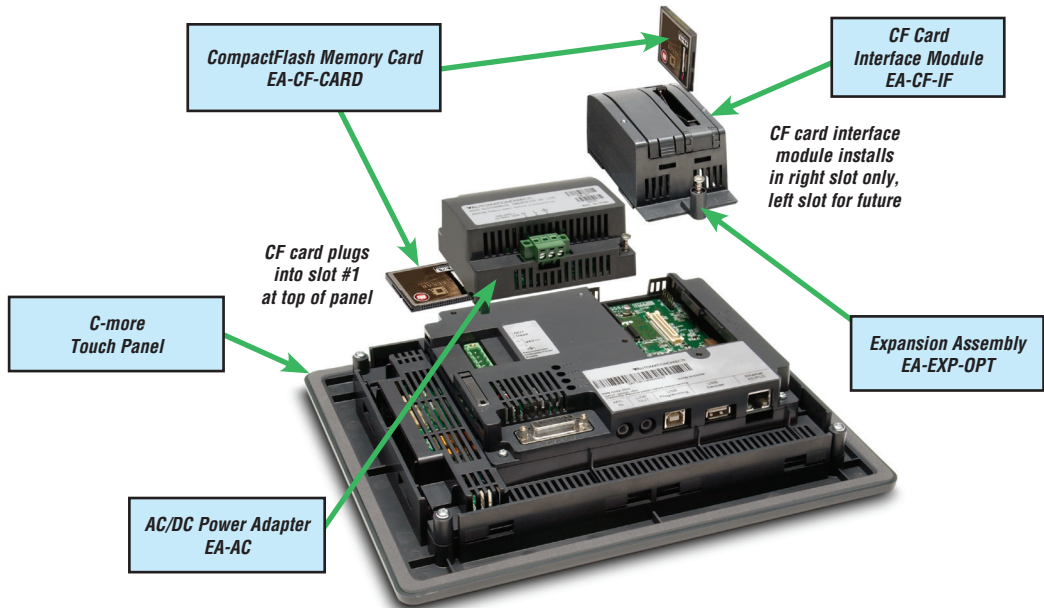
**WARNING: Do NOT use EZTouch RAM or Flash memory cards with the C-more touch panels.**



## Accessories Overview



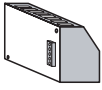
**NOTE:** CompactFlash memory card designations – CF Slot #1 is at the top of the panel and CF Slot #2 is the CF Card Interface Module, EA-CF-IF.



**NOTE:** Refer to the individual product data sheets that are included with the accessories for additional information.

## Accessories at a glance:

3



AC/DC Power Adapter:  
EA-AC



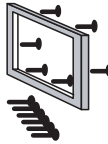
Expansion Assembly:  
EA-EXP-OPT



CF Card Interface Module:  
EA-CF-IF



CompactFlash  
Memory Card:  
EA-CF-CARD



6 inch Adapter Plate:  
EA-6-ADPTR  
(Used to retrofit new  
**C-more** 6" touch panel  
into existing EZTouch  
non-slim panel cutout.)



D-SUB 15 pin 90 degree  
Comm Port Adapter:  
EA-ADPTR-4



D-SUB 15 pin to  
Terminal Block Adapter:  
EA-COMCON-3



Non glare 15 inch screen cover:  
EA-15-COV2  
(pk of 3)



Non glare 12 inch screen cover:  
EA-12-COV2  
(pk of 3)



Non glare 10 inch screen cover:  
EA-10-COV2  
(pk of 3)



Non glare 8 inch screen cover:  
EA-8-COV2  
(pk of 3)



Non glare 6 inch screen cover:  
EA-6-COV2  
(pk of 3)



### WARNING

To minimize the risk of potential safety problems, you should follow all applicable local and national codes that regulate the installation and operation of your equipment. These codes vary from area to area and it is your responsibility to determine which codes should be followed, and to verify that the equipment, installation, and operation are in compliance with the latest revision of these codes.

*Equipment damage or serious injury to personnel can result from the failure to follow all applicable codes and standards. We do not guarantee the products described in this publication are suitable for your particular application, nor do we assume any responsibility for your product design, installation, or operation.*

If you have any questions concerning the installation or operation of this equipment, or if you need additional information, please call us at 770-844-4200.

This publication is based on information that was available at the time it was printed. At **AutomationDirect.com**<sup>®</sup> we constantly strive to improve our products and services, so we reserve the right to make changes to the products and/or publications at any time without notice and without obligation. This publication may also discuss features that may not be available in certain revisions of the product.

## AC/DC Power Adapter

The optional *C-more* AC/DC Power Adapter can be used to power the *C-more* touch panels from a 100-240 VAC, 50/60 Hertz, voltage source. The adapter provides 24 VDC @ 1.5 A to the touch panel's DC power connector and can be conveniently secured to the touch panel with two captive screws. The adapter provides a power loss signal to the touch panel that can be used to track power outages. This signal also allows the touch panel by way of a timed sequence to stop writing data to CompactFlash memory devices providing a controlled shutdown for increased data logging reliability.

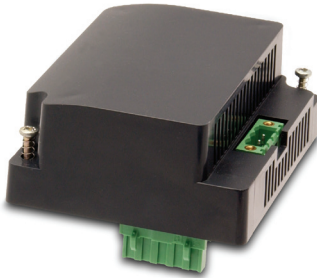


**WARNING:** The AC/DC Power Adapter is not recommended for use with the EA7-T15C touch panel when operating temperatures are expected to exceed 40 °C [104 °F].

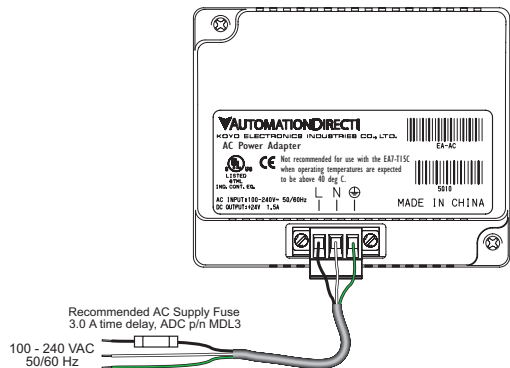


**NOTE:** 1.) The AC/DC Power Adapter, EA-AC, is for *C-more* touch panels only, and is powered from a 100-240 VAC, 50/60 Hertz power source. The adapter provides 24 VDC @ 1.5 A.  
2.) Power Fault features help protect data being logged to CompactFlash during power failures. The *C-more* panel must have firmware version 1.21 Build 6.18E or higher for proper operation.

### Part No. EA-AC



### AC/DC Power Adapter Wiring



#### Tightening Torque

Power supply cable torque	71 - 85 oz-in (0.5 - 0.6 Nm)
Power connector mounting torque	71 - 85 oz-in (0.5 - 0.6 Nm)
Mounting flange screw torque	57 - 71 oz-in (0.4 - 0.5 Nm)



**NOTE:** Use 60 / 75 °C copper conductors only.

## AC/DC Power Adapter Specifications

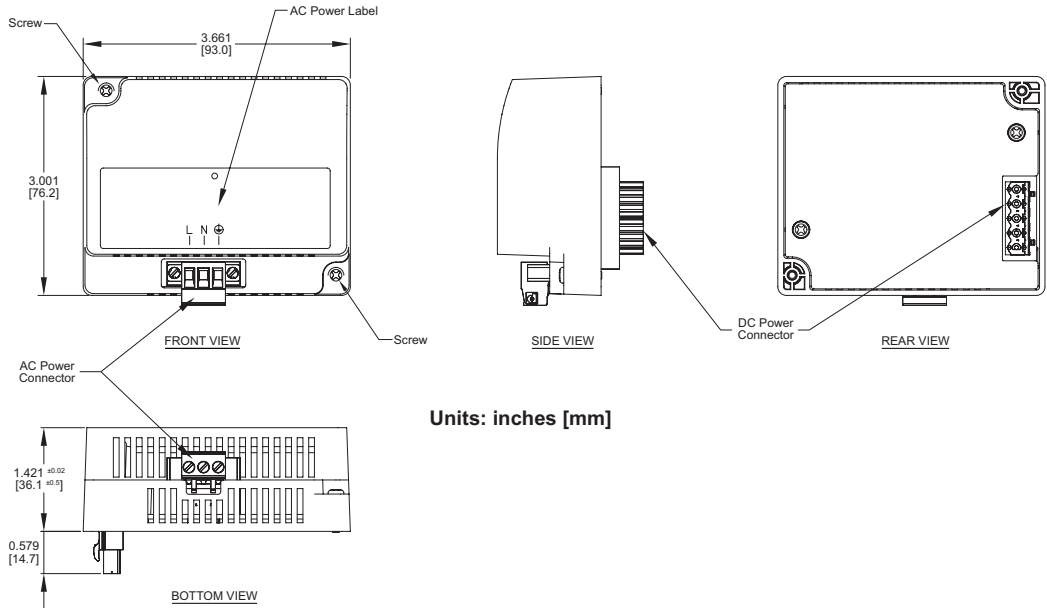
AC/DC Power Adapter Specifications	
Part Number	EA-AC
Input Voltage & frequency	100-240 VAC; 50/60 Hertz
Voltage Range	85-264 VAC w/ Under Voltage and Over Voltage Shutdown
Permissible Momentary Power Failure	Within 40 ms, see explanation in the Note below.
Input Power	68 VA or less
Operating Temperature Range	0 °C to 50 °C [32 to 122 °F] Maximum surrounding temperature rating, 50 °C (For the EA7-T15C touch panel, maximum temperature is 40° C, [104 °F] when using the AC/DC Power Adapter.)
Storage Temperature Range	-20 to 60 °C [-4 to 140 °F]
Operating & Storage Humidity	10-85% RH (non-condensing)
Noise Immunity	1000 VAC p-p (Pulse width 1 µs, rise time: 1 ns) With proper ground connection on AC terminal block.
Hi-pot	1000 VAC, 1 minute With proper ground connection on AC terminal block.
Insulation Resistance	500 VDC, 10 M ohm or above With proper ground connection on AC terminal block.
Vibration	Compliant with IEC61131-2
Shock	Pulse shape: Sine half wave, Peak acceleration: 147 m/s <sup>2</sup> (15 G), X, Y, Z: 3 directions, 2 times each
Thermal Protection	140 °C [284 °F], with autorecovery
Short Circuit Protection	85 VAC: 2.6 A, 100 VAC: 2.8 A, 264 VAC: 3.9 A
Static Electricity Discharge Resistance	Compliant with IEC61000-4-2, Contact: 4 kV, Air: 8 kV
Agency Approvals	UL508, cUL, CE, EMC EN61132-2
Environment	For use in pollution degree 2 environment
Grounding	Ground resistance: less than 100 ohm
Dimensions - inches [mm]	3.00" (H) x 3.66" (W) x 1.42" (D) [76.2 mm x 93.0 mm x 36.1 mm] (Excluding DC Power Connector.)
Weight	6.13 oz. [175 g]
Cooling Method	Natural convection when installed on vertically mounted touch panel.
Included Parts	AC Power Connector, Data Sheet Insert
Removable AC Power Connector	EA-AC-CON or DECA Switchlab MC101-508-03G Secure with (2) captive M2.5 screws, torque to 70 oz-in [0.5 Nm]
Output Voltage and Ripple	21.6 - 26.4 VDC, Ripple < 100 mV p-p
Output Current	Maximum 1.5 A
Inrush Current	For 100 VAC: 15 A, 3 ms or less For 240 VAC: 20 A, 3 ms or less
Power Fail Detection Voltage	58 VAC ±5%
Recommended AC Supply Fuse	3.0 A time delay, ADC p/n MDL3
Power Supply Cable Torque	71 - 85 oz-in (0.5 - 0.6 Nm)
Mounting to Touch Panel	Secure with (2) spring loaded captive M3-20 screws, torque to 50 oz-in [0.35 Nm]



**NOTE:** Permissible momentary power failure: The **C-more** touch panel will turn off the LCD backlight instantly when the power failure is detected (less than 58 VAC +/- 5%) for extending the Power Retention Period that enables the CPU to run longer. The backlight turns on automatically when the power returns to the **C-more** operating voltage.

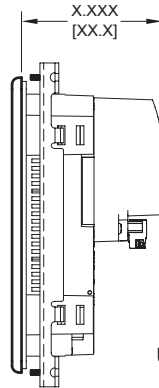
## AC/DC Power Adapter Dimensions

### Dimensions



Units: inches [mm]

### Panel Depth with AC/DC Power Adapter Installed



- EA7-S6M-R = 2.921 [74.2]
- EA7-T6CL-R = 2.921 [74.2]
- EA7-S6C-R = 2.921 [74.2]
- EA7-S6M = 2.921 [74.2]
- EA7-S6C = 2.921 [74.2]
- EA7-T6C = 2.921 [74.2]
- EA7-T6CL = 2.921 [74.2]
- EA7-T8C = 3.157 [80.2]
- EA7-T10C = 3.106 [78.9]
- EA7-T12C = 3.102 [78.8]
- EA7-T15C = 3.075 [78.1]

Units: inches[mm]

### AC/DC Power Adapter Installation



**WARNING:** This procedure should only be performed by qualified personnel who are experienced in working with electronic equipment. Take the necessary steps to prevent damage that may be caused by static electricity discharge. Disconnect input power to the touch panel before proceeding.

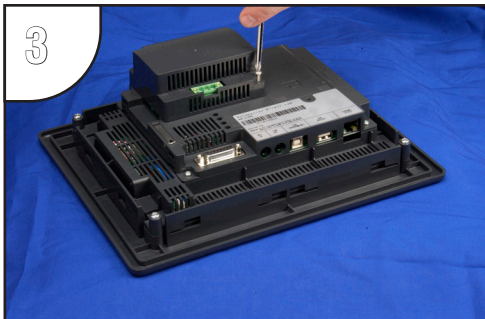
3



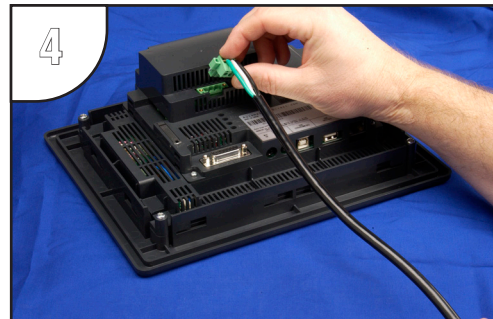
1  
Preparation: Place the touch panel face down on a lint-free soft surface to prevent scratching the display screen if not already installed in a control cabinet. Remove the DC power connector if it is installed.



2  
Insert the AC/DC Power Adapter into the touch panel's 5-position DC power connector.



3  
Secure the AC/DC Power Adapter to the touch panel by tightening the two (2) spring loaded captive M3-20 screws to a torque of 50 oz-in [0.35 Nm].



4  
Plug the wired 3-pin AC Power Connector into its mating connector on the adapter and secure in place by tightening the two (2) captive M2.5 screws to a torque of 70 oz-in [0.5 Nm]. (Wiring details shown on page 3-5.)



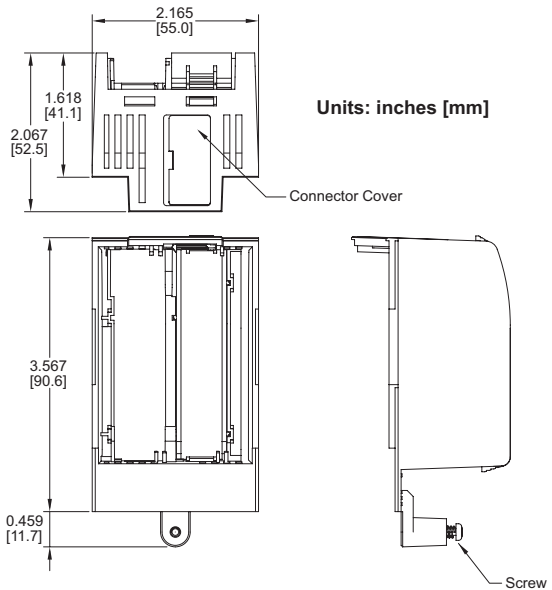
# Expansion Assembly

The *C-more* Expansion Assembly is used to allow installation of the optional CF Card Interface Module for CF card use and also provides a slot for future option modules.

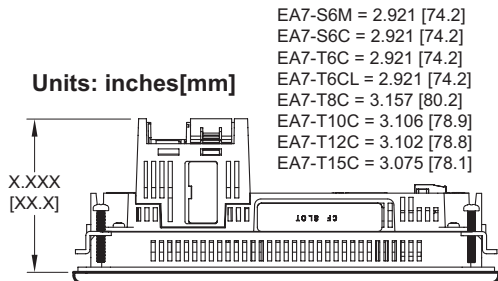
## Part No. EA-EXP-OPT



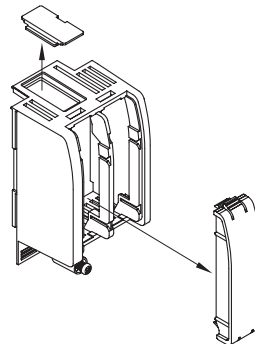
## Expansion Assembly Dimensions



## Panel Depth with Expansion Assembly Installed



## Expansion Assembly Details

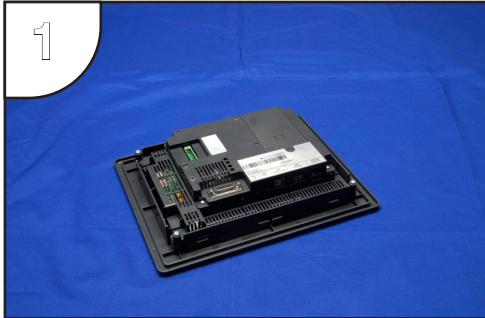


### Expansion Assembly Installation



**WARNING:** This procedure should only be performed by qualified personnel who are experienced in working with electronic equipment. Disconnect input power to the touch panel before proceeding.

3



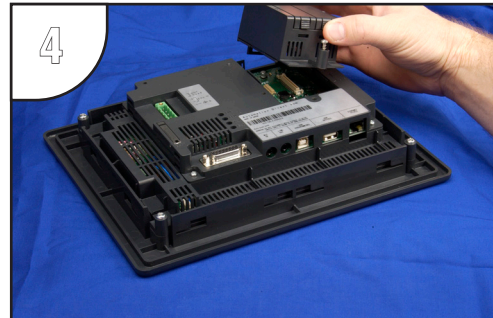
1  
Preparation: Place the touch panel face down on a lint-free soft surface to prevent scratching the display screen if not already installed in a control cabinet.



2  
Remove expansion area cover by pressing down on the left and right line markings and at the same time, slide the cover in the direction of the embossed arrow.

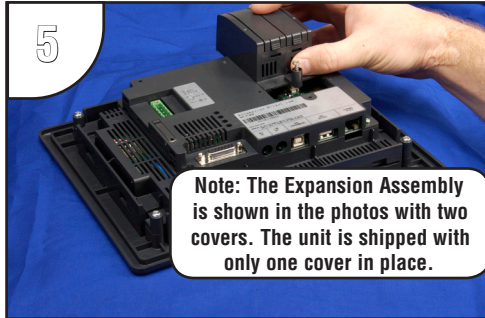


3  
The cover will stop at the "Remove" position indicated by a tic mark on the cover lining up with the "Remove" tic mark on the panel. At this position, lift the cover up.

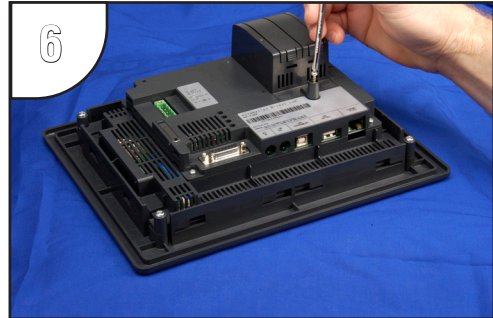


4  
Position the expansion assembly over the opening so that the tic mark to the right of the fastening screw lines up with the "Remove" tic mark.

## Expansion Assembly Installation (cont'd)



Slide the expansion assembly in a downward direction until the tic marks at the home position line up.



Secure the Expansion Assembly to the touch panel by tightening the spring loaded captive M3-20 screw to a torque of 50 oz-in [0.35 Nm].

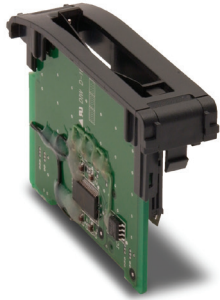
3

## CF Card Interface Module

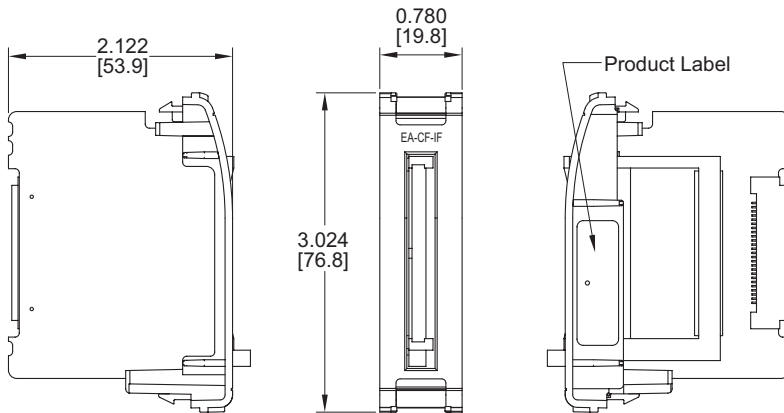
The *C-more* CF Card Interface Module is used with the Expansion Assembly to allow use of CompactFlash™ cards, such as the CompactFlash Memory, EA-CF-CARD.

### Part No. EA-CF-IF

3



### CF Card Interface Module Dimensions



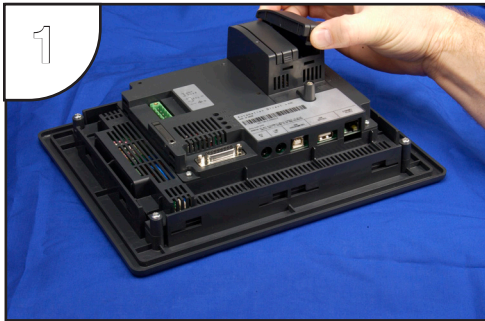
Units: inches [mm]

## CF Card Interface Module Installation



**WARNING:** The CF Card Interface Module is designed to be installed in the right hand side slot of the Expansion Assembly only. This procedure should only be performed by qualified personnel who are experienced in working with electronic equipment. Take the necessary steps to prevent damage that may be caused by static electricity discharge. Disconnect input power to the touch panel before proceeding.

3



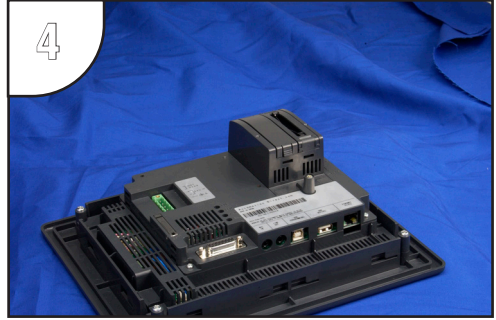
**Preparation:** Place the touch panel face down on a lint-free soft surface to prevent scratching the display screen if not already installed in a control cabinet. Again, make sure the input power is disconnected. Remove the right hand side protective slot cover, if it is installed, by squeezing the pinch tabs and lifting the cover off.



Install the CF Card Interface Module, p/n EA-CF-IF, into the right hand side slot by carefully aligning the female connector of the interface module with the male connector on the touch panel. There are PCB guides at the top and bottom of the slot to accept the edge of the Interface Module's printed circuit board. It is also helpful to preset the locking tabs of the Interface Module so they are swung inward, top and bottom.



Continue to slide the interface module into the slot until the front of the module is flush with the front of the Expansion Assembly. Press on the front of the Interface Module until the locking tabs snap into place.



The above photo shows the CF Card Interface Module fully installed. To remove the Interface Module in the future, pry out on the top and bottom locking tabs at the same time and the module will release from the connector. Lift the module from the slot. The Interface Module should only be removed from the slot with input power disconnected.

## CompactFlash Memory

EA-CF-CARD is a high speed industrial grade CompactFlash™ memory card for non-volatile storage. Its 85 °C operating temperature makes it perfect for data logging in industrial applications (recommended for *C-more* touch panels).

### **Part No. EA-CF-CARD**



### **Specifications/Features:**

- CompactFlash™ Compatibility
- W/E Endurance: 100,000 cycles
- Data transfer rate: 16MB/second
- Operating Temp: -13° to 185° F (-25° to 85° C)
- Operating Humidity: 85% max, non-condensing
- Storage Temp: -13° to 194° F (-25° to 90° C)
- Storage Humidity: 95% max, non-condensing

### **CF Slot #1 Location**



### **CF Slot #2 Location**





## CompactFlash Memory Card Installation

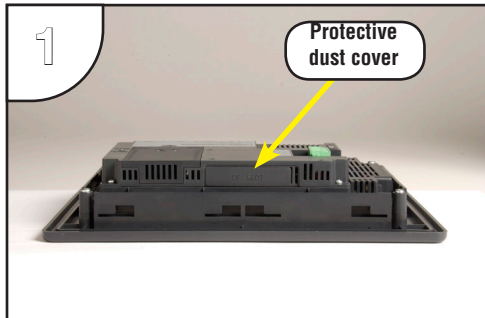


**WARNING:** Take the necessary steps to prevent damage that may be caused by static electricity discharge. Disconnect input power to the touch panel before proceeding.

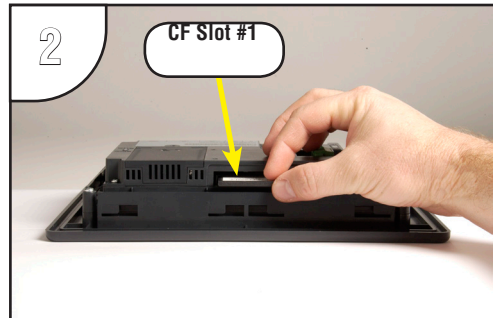
### CF Card Installed in CF Slot #1:

**Preparation:** If the touch panel is not already installed into a control cabinet, then in a clean environment, place the panel face down on a lint-free soft surface to prevent scratching the front of the panel.

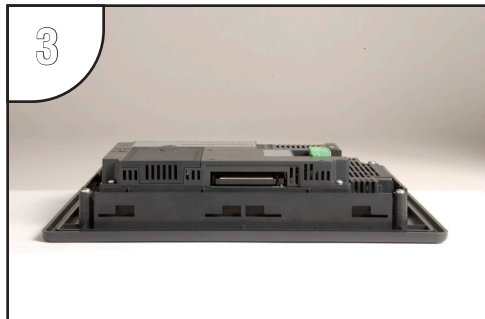
3



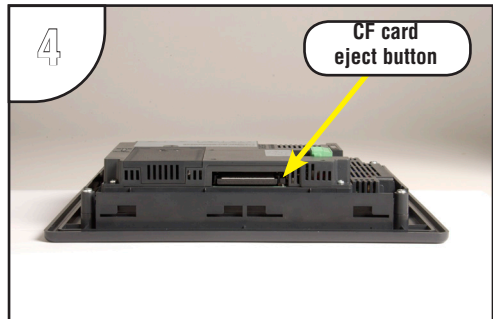
Remove the protective dust cover from the CF Slot #1 at the top of the touch panel by prying up on one edge. Discard the dust cover or store it for future use when a CF card is not being used.



Orientate the CompactFlash memory card so that the front label is facing the back of the panel and the CF card connector faces into the slot. There are guides on each side of the slot that will match the guides on the CF card. The CF card can only be inserted one way.



Gently press the CF card into the slot until it stops. You should feel a slight resistance as the CF card connector mates with the slot's connector. The CF card should be flush with the slot's opening. The dust cover can then be re-installed.



To remove the CF card from the CF Slot #1, press in on the eject button to the right of the CF card. This will cause the CF card to be partially ejected from the slot allowing removal.



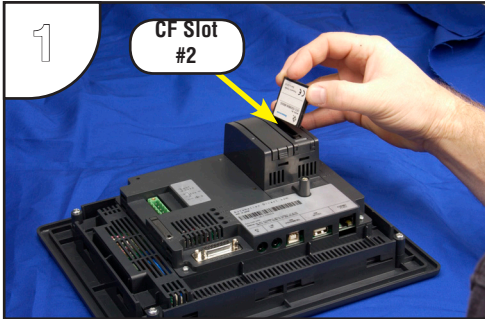
**WARNING:** Do NOT use EZTouch RAM or Flash memory cards with the *C-more* touch panels.



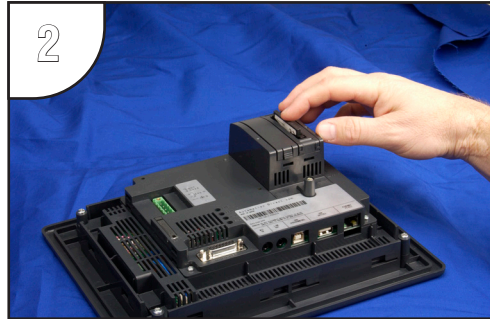
## CompactFlash Memory Card Installation (cont'd)

### 3 CF Card Installed in CF Slot #2:

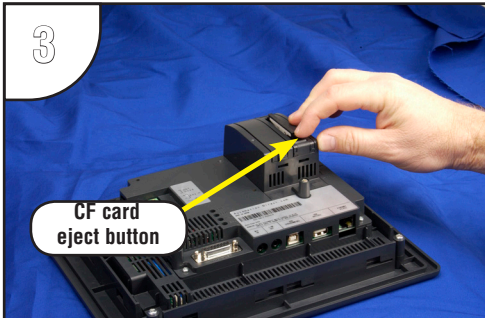
**Preparation:** Disconnect input power and all other connections, then remove the touch panel from the control cabinet. In a clean environment, place the panel face down on a lint-free soft surface to prevent scratching the front of the panel.



Orientate the CompactFlash memory card so that the front label is facing the power supply connector and the CF card connector faces into the slot. There are guides on each side of the slot that will match the guides on the CF card. The CF card can only be inserted one way.



Gently press the CF card into the slot until it stops. You should feel a slight resistance as the CF card connector mates with the slot's connector. The CF card should be flush with the slot's opening.



To remove the CF card from the CF Slot #2, press in on the eject button at the bottom of the CF card. This will cause the CF card to be partially ejected from the slot allowing removal.



**WARNING:** Do NOT use EZTouch RAM or Flash memory cards with the *C-more* touch panels.



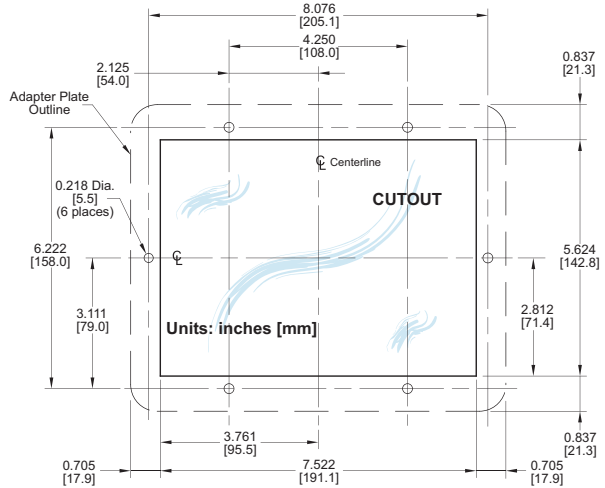


## 6" Adapter Plate

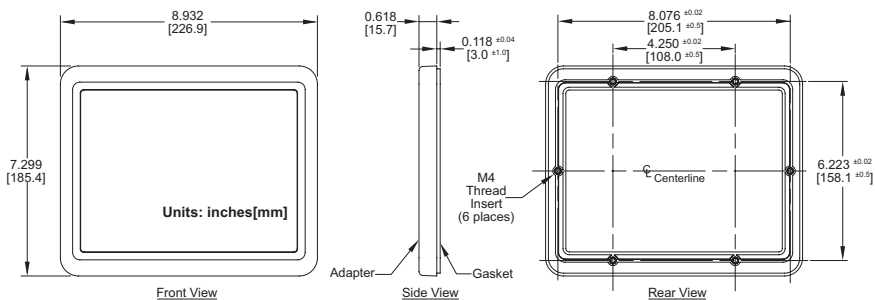
The adapter plate has been designed to simplify the retrofit of a new *C-more* 6" touch panel into an existing cabinet cutout for an **EZTouch** 6" non-slim touch panel, such as *AutomationDirect* part number EZ-S6C-K, EZ-S6C-F, EZ-S6M-R or EZ-S6M-F. The new *C-more* 6" touch panel will directly mount into the existing cutout opening for any EZTouch 6" slim touch panel.

### Part No. EA-6-ADPTR

### 6" Adapter Plate Cutout Dimensions



### 6" Adapter Plate Dimensions



## 6" Adapter Plate Installation

The adapter plate has been designed to simplify the retrofit of a new *C-more* 6" touch panel into an existing cabinet cutout for an *EZTouch* 6" non-slim touch panel, such as our part number EZ-S6C-K, EZ-S6C-F, EZ-S6M-R or EZ-S6M-F. The new *C-more* 6" touch panel will directly mount into the existing cutout opening for any *EZTouch* 6" slim touch panel.

Two sets of mounting screws are provided with the adapter plate. Set A contains six M4 metric screws by 8mm in length for a control cabinet thickness range of 0.02-0.118" [0.5-3mm]. Set B contains six M4 metric screws by 10mm in length for a control cabinet thickness range of 0.118-0.197" [3-5mm]. Mounting screw torque: 100 oz-in [0.7 Nm].

The two DIN mounting clips that secure the *C-more* 6" touch panel to the adapter plate are provided with the touch panel. The adapter plate has an integral sealing gasket and the touch panel includes a gasket to seal the panel to the adapter.

Use of the adapter plate will maintain the NEMA 4/4X (indoor) rating of the *C-more* touch panel.

Dimensions for the cutout with mounting hole locations and an assembly diagram are shown in this chapter.

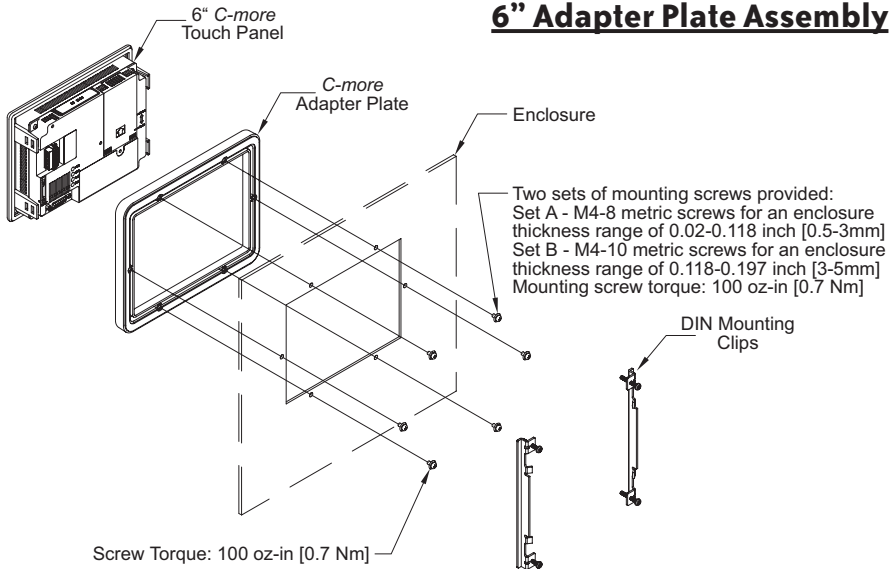
Preparation: Confirm the existing cutout with the dimensions shown on the previous page when using the adapter plate to replace an existing *EZTouch* 6" non-slim touch panel with a new *C-more* 6" touch panel.

3



**WARNING:** Mount the adapter plate and touch panel on a vertical surface to allow proper cooling.

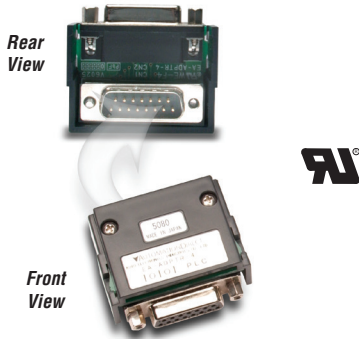
## 6" Adapter Plate Assembly



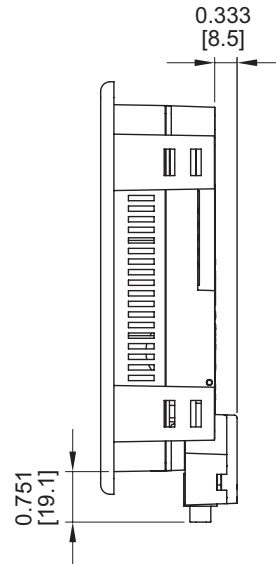
## D-SUB 15-pin 90 degree Comm Port Adapter

The EA-ADPTR-4 adapter is plugged into the 15-pin serial port on the rear of the panel to allow a PLC communication cable to be plugged in at a 90 degree angle to reduce panel depth requirements. UL Recognized.

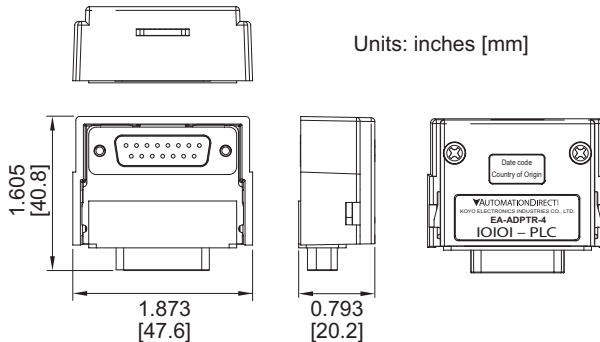
### Part No. EA-ADPTR-4



### Panel Dimensions with Connector Installed



### Comm Port Adapter Dimensions



### Installation

## D-SUB 15-pin to Terminal Block Adapter

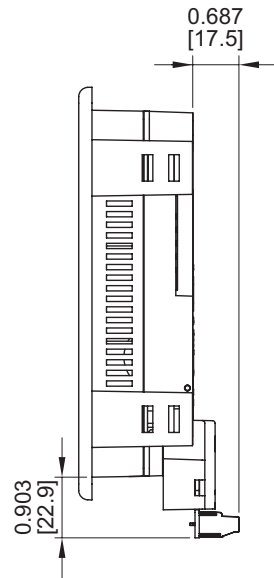
The EA-COMCON-3 adapter is plugged into the 15-pin serial port on the rear of the panel to allow wire terminal connections for RS-422/485 PLC communication cable. UL Recognized.

### Part No. EA-COMCON-3

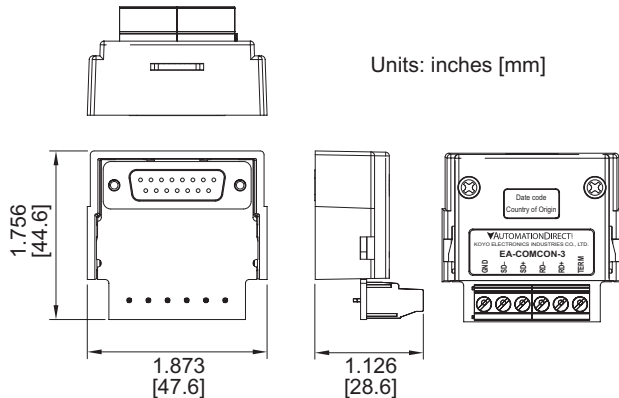
3



### Panel Dimensions with Connector Installed



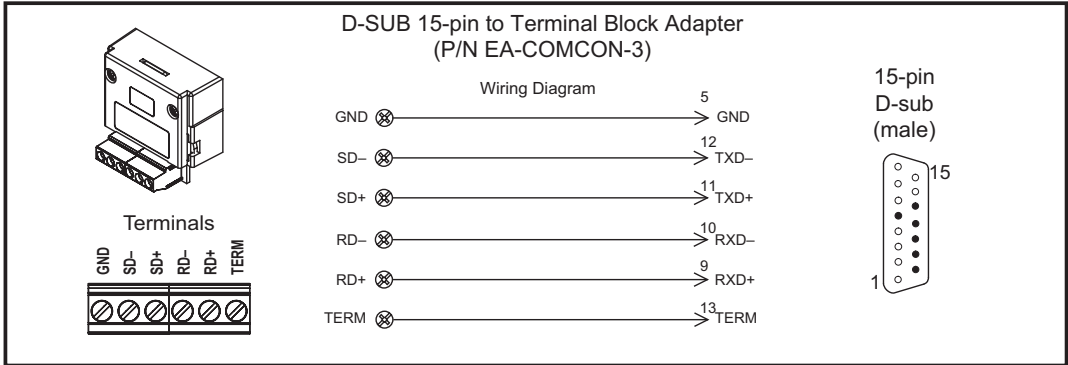
### Terminal Block Adapter Dimensions



### Installation

## D-SUB 15-pin to Terminal Block Adapter (cont'd)

### Terminal Block Adapter Wiring Diagram

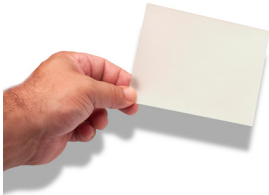


## Non-glare Screen Covers

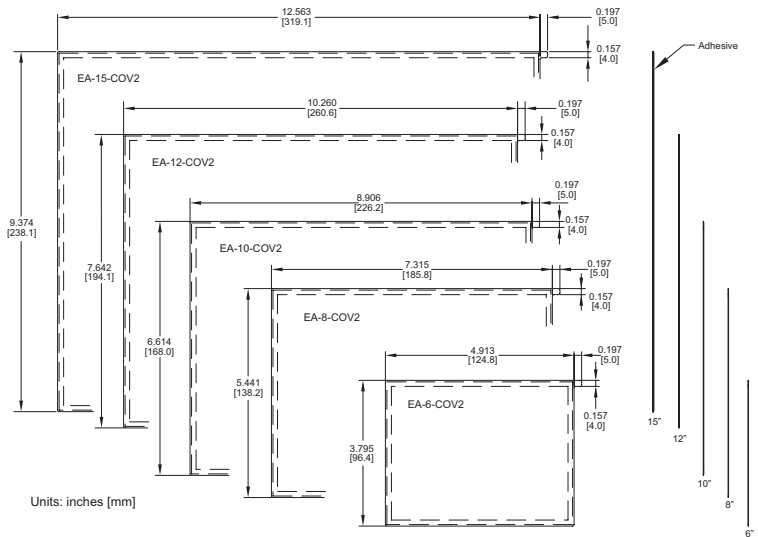
Non Glare 6 Inch Screen Cover, protective overlay used to protect the touch screen while helping to reduce the glare from external light sources. (pk of 3)

**Part No. EA-6-COV2, EA-8-COV2, EA-10-COV2, EA-12-COV2 & EA-15-COV2**

3



### Screen Cover Dimensions



## Non-glare Screen Covers (cont'd)

### Clear Screen Overlay Installation

#### Step 1



*Check to be sure that the proper size non-glare screen cover is being used on the subject touch panel. Notice that the outer perimeter of the screen cover has an adhesive band. The adhesive band will be located on the outside edge of the touch panel's white frame bordering the touch area when installed.*

#### Step 2



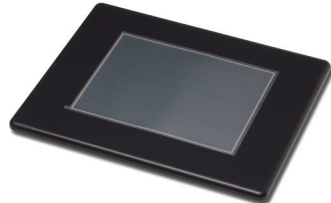
*Start in one corner and peel the screen cover from the backing.*

#### Step 3



*Align the screen cover over the touch panel's white frame, then start on one side and gently lay the cover over the entire touch area.*

#### Step 4



*Smooth out the screen cover and press all around the outside perimeter to secure the cover in place. The screen cover can be removed by lifting up on the small tab and gently pulling the cover away from the touch panel's surface.*

#### Step 5



*Remove the protective sheet.*



**NOTE:** The protective cover ships with a thin protective sheet on the face of the cover that needs to be carefully removed. If your panel is not clear, the protective sheet may not have been removed.