

Setup the SST Profibus Master PCI Card for the H0–PSCM

In This Appendix. . . .

— Setup SST Profibus Master PCI Card

NOTE: H0-PSCM has been retired.
No replacement available.

Setup the SST Profibus Master PCI Card for the H0-PSCM

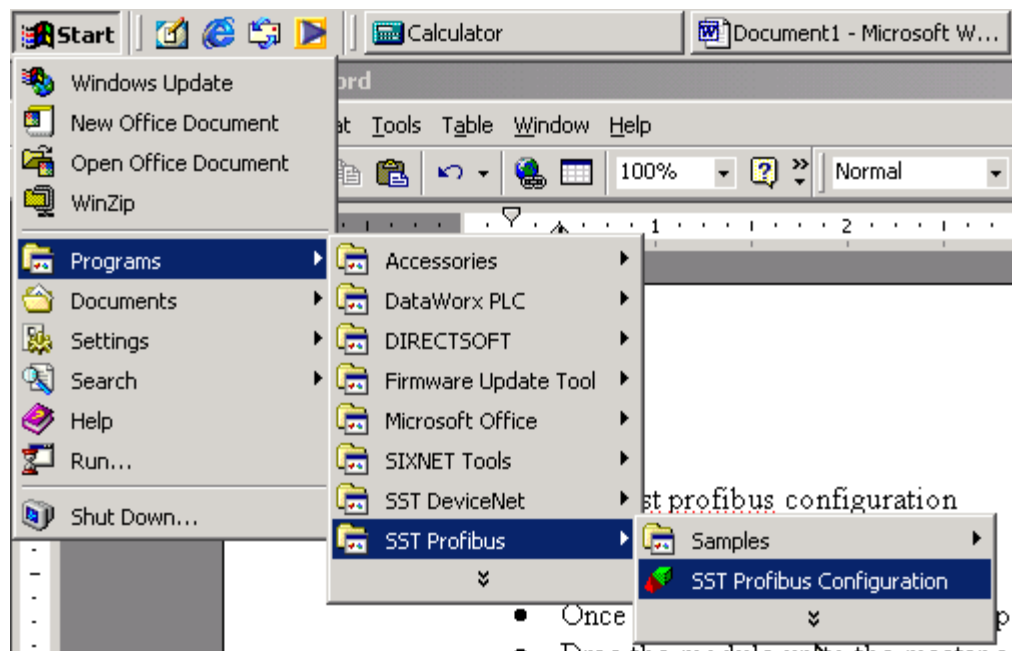
If you are adding the H0-PSCM as a slave to be used with an HMI on your network, you will need a Profibus Master for the network. Following is a step-by-step procedure for setting up a Profibus Master card for a PC.

Getting Started

As mentioned, you will need a Profibus interface card for your PC. We use the SST™ Interface Card for Profibus, produced by Woodhead Industries, Inc.. More information about the purchase of this card can be obtained from their website, www.mySST.com. The PC used for the setup procedure explained here uses this interface card. After this card has been installed, run the SST Profibus Configuration Tool, which comes with the card, to configure the H0-PSCM card.

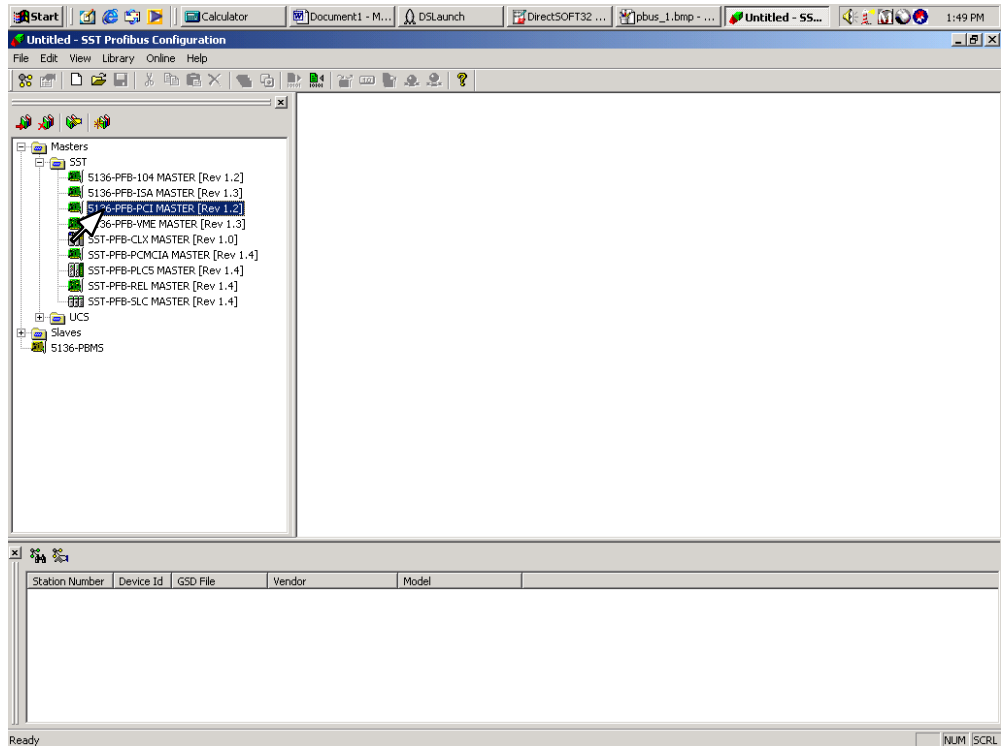
Open the SST Profibus Configuration program.

Start > Programs > SST Profibus > SST Profibus Configuration

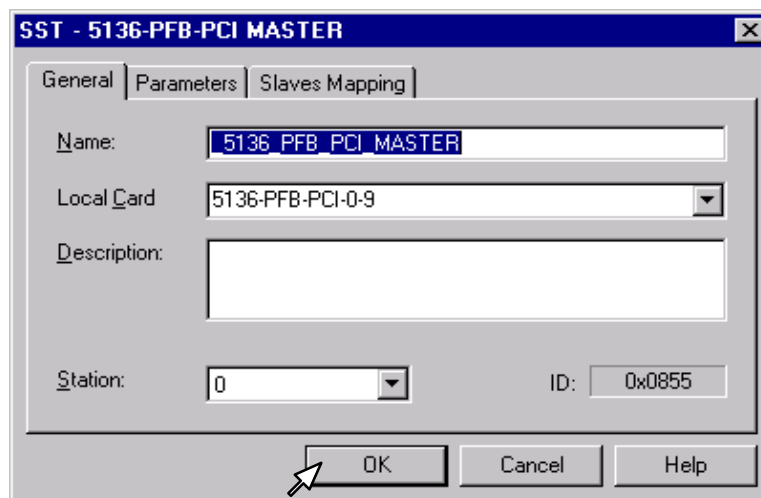


First, you must add the SST Master card that is installed in your PC to the configuration.

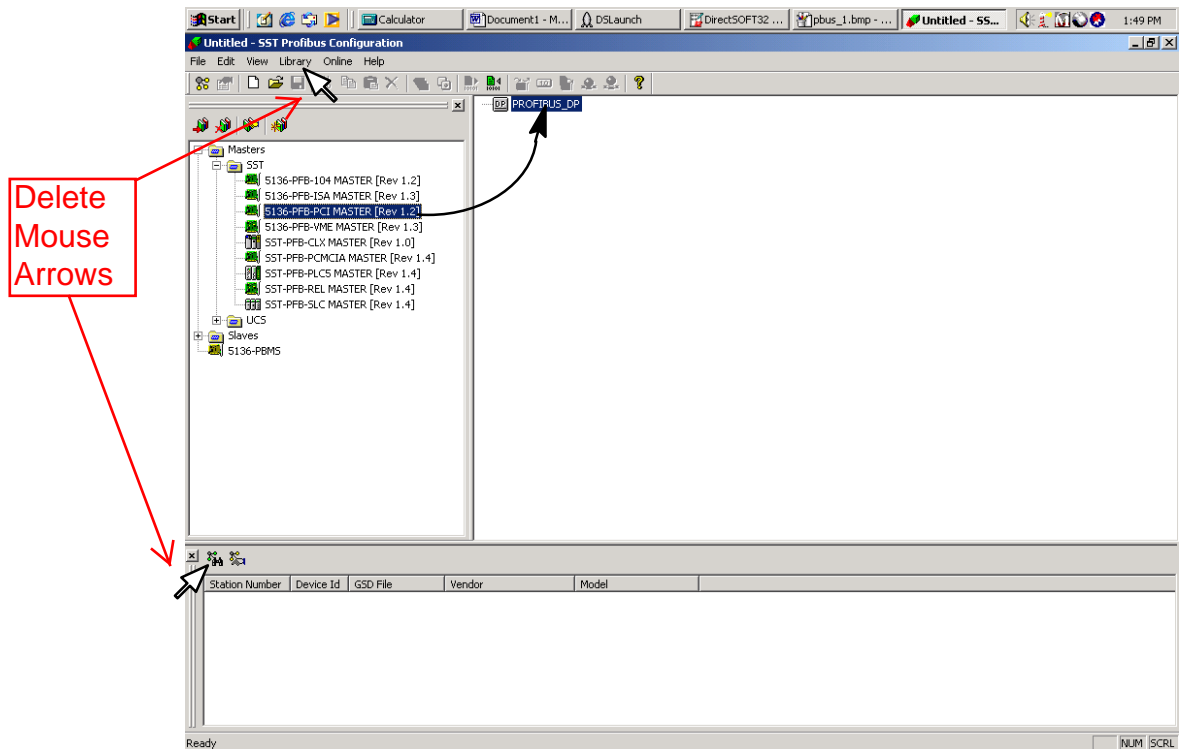
To select the SST Master, click on the **+** next to **Masters** at the top of the tree to open the list. Click on the **+** next to **SST** to open the list of cards. Select the card that is installed in your PC by right clicking on the card name and select **Properties**.



This window will come into view to verify that the correct Master has been chosen. Click **OK**.



The Master card will appear on the right side of the window. Now drag the SST Master to the PROFIBUS_DP.



The GSD file for the H0-PSCM must be added to the library. Download the GSD file from the AutomationDirect website at:

<https://support.automationdirect.com/downloads.html>

Scroll down to "Configuration Files, and click on "H0-PSCM GSD File".

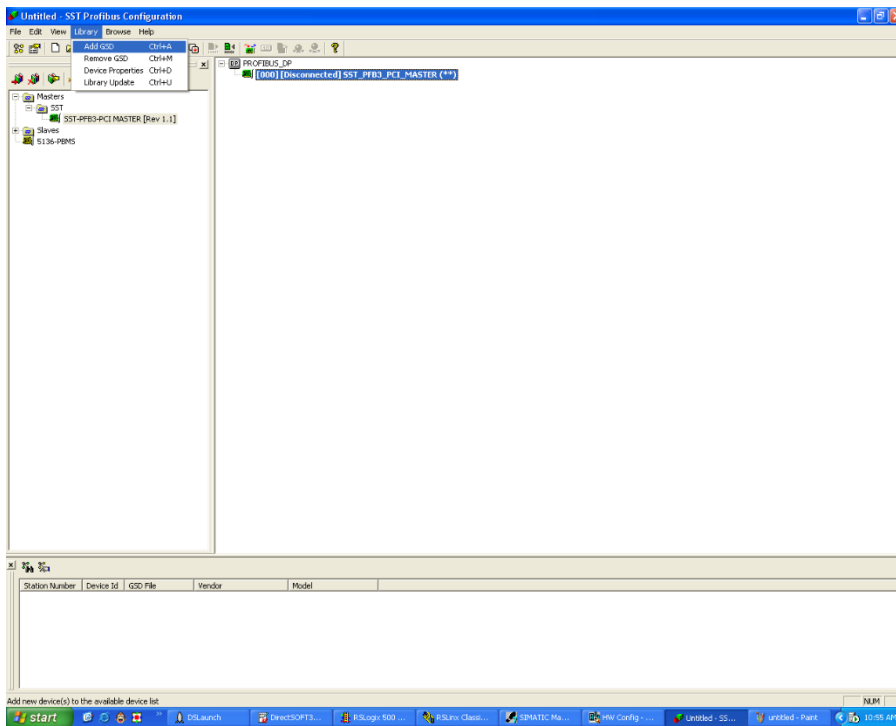
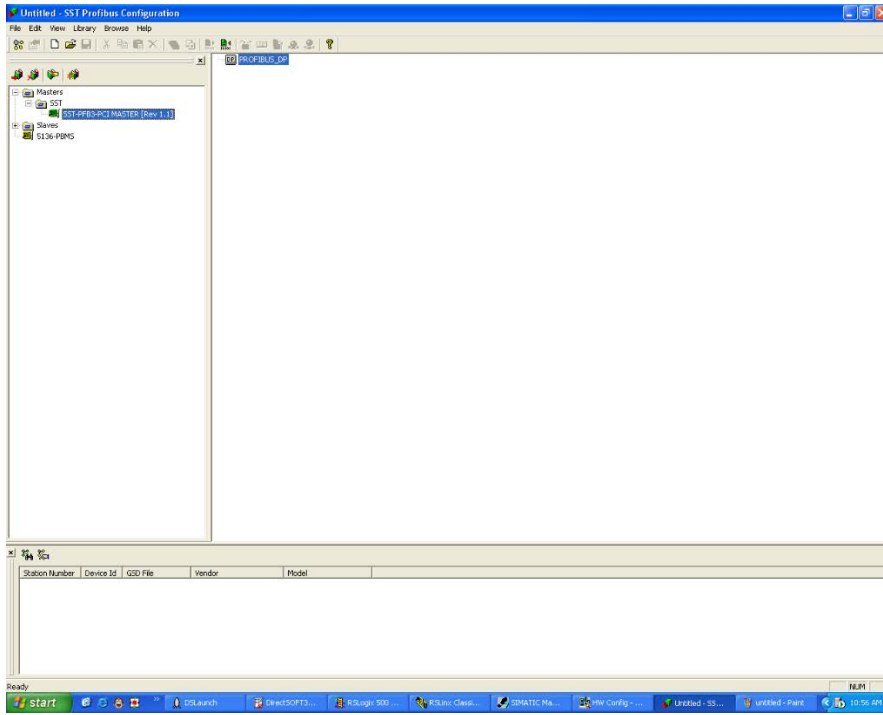
See the following pages C-4A and C4-B.

Add GSD File

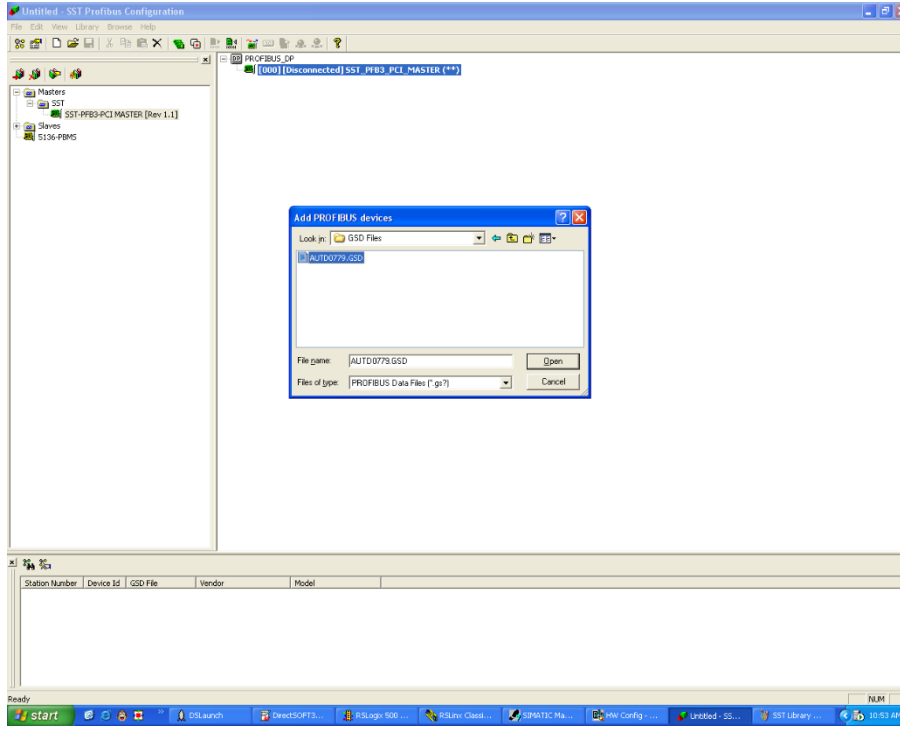
The GSD file for the H0-PSCM must be added to the library. Download the GSD file from the AutomationDirect website at:

<https://support.automationdirect.com/downloads.html>

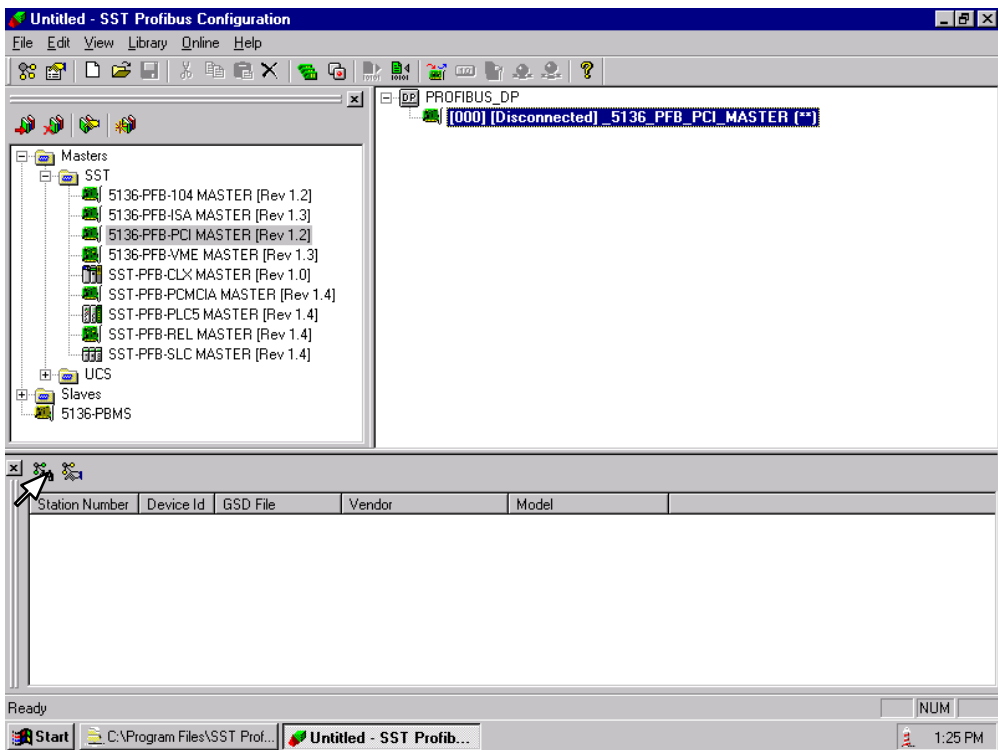
Scroll down to “**Configuration Files**,” and click on “**H0-PSCM GSD File**”.



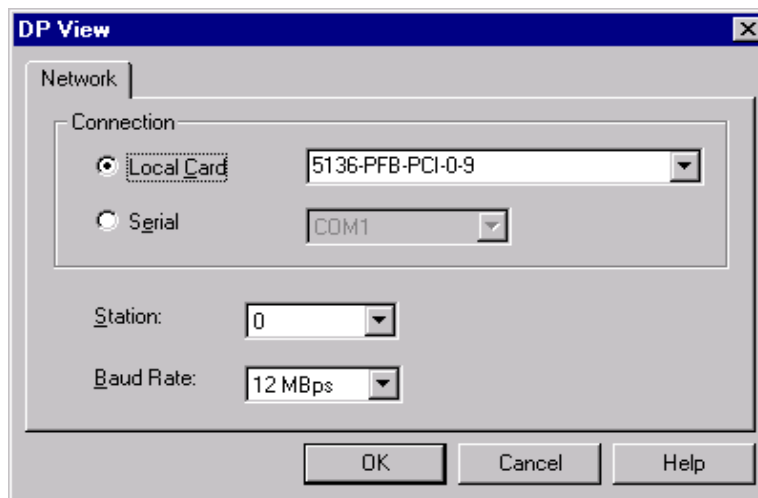
Add GSD File



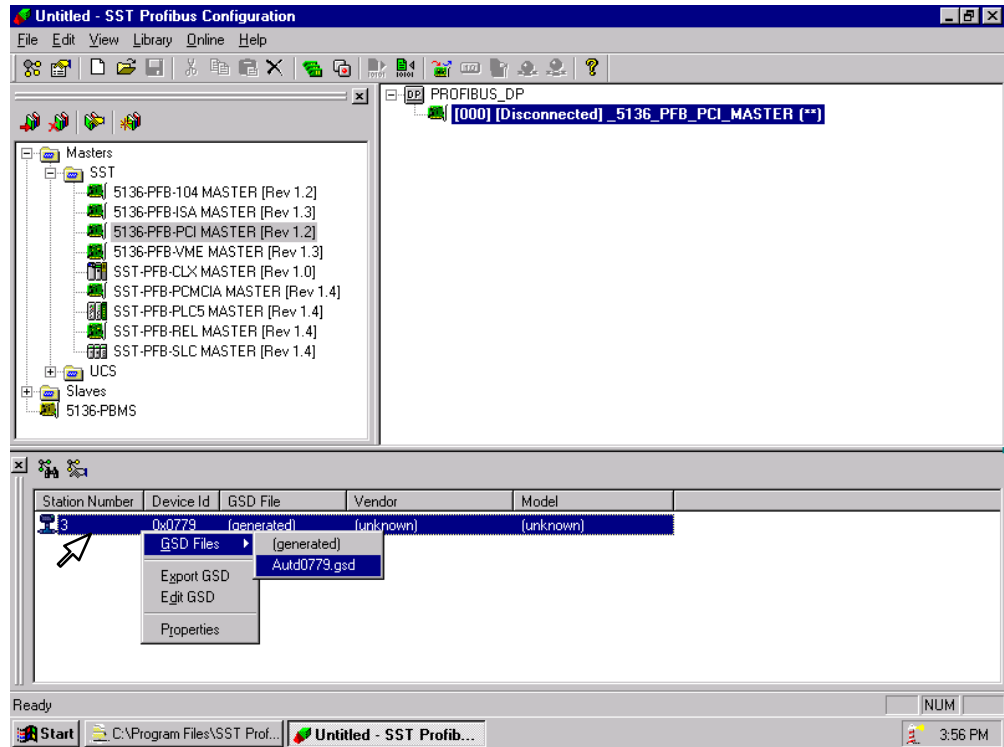
The window will show the Master configured as [000]. You can now scan for the slaves (nodes) on the network. In this case it will be your DL05/06. Click on the **Search for slaves** icon in the lower left of the window.



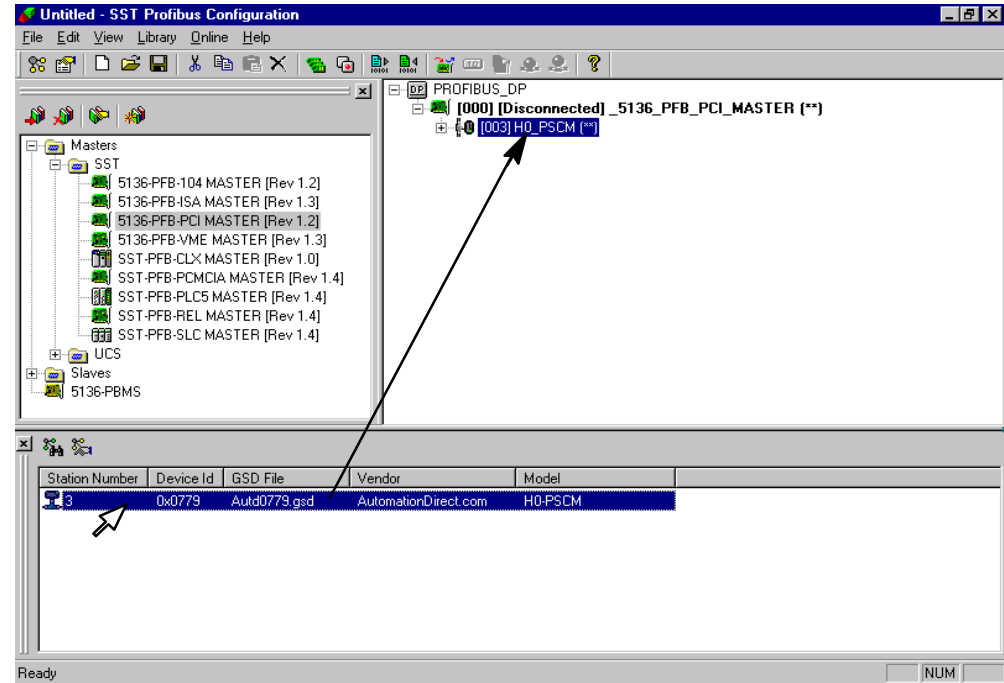
This window will come into view to verify that the correct Master to scan. Click **OK**.



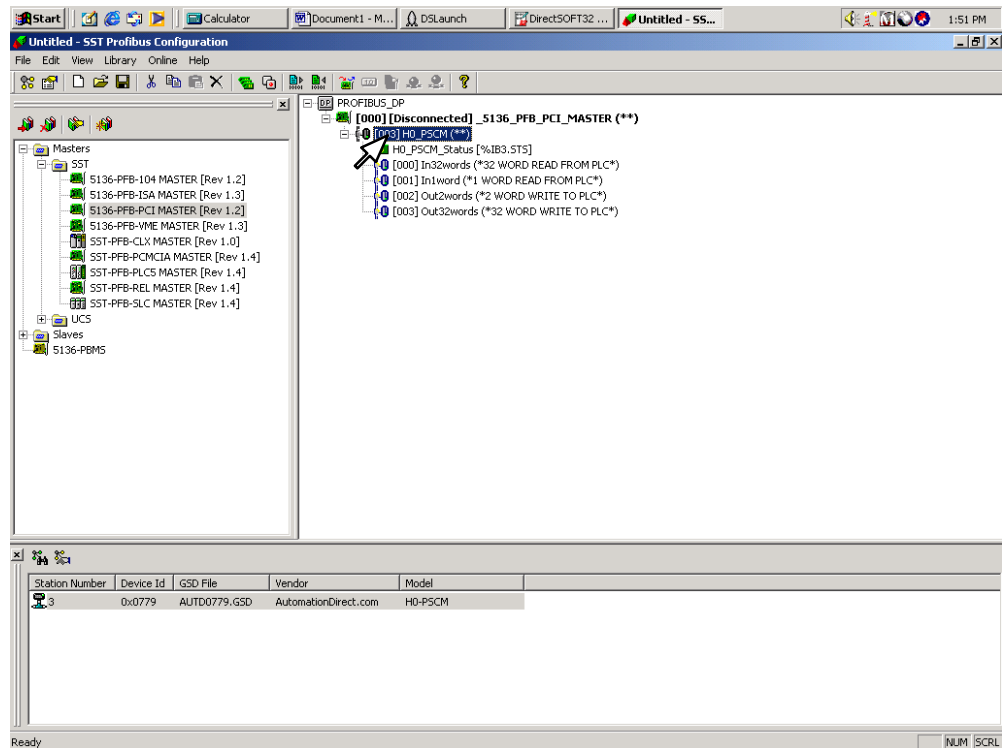
When the slave (node) is found, it will appear in the lower portion of the window as 'unknown'. Right click on the unknown label and select the GSD file which was installed earlier.



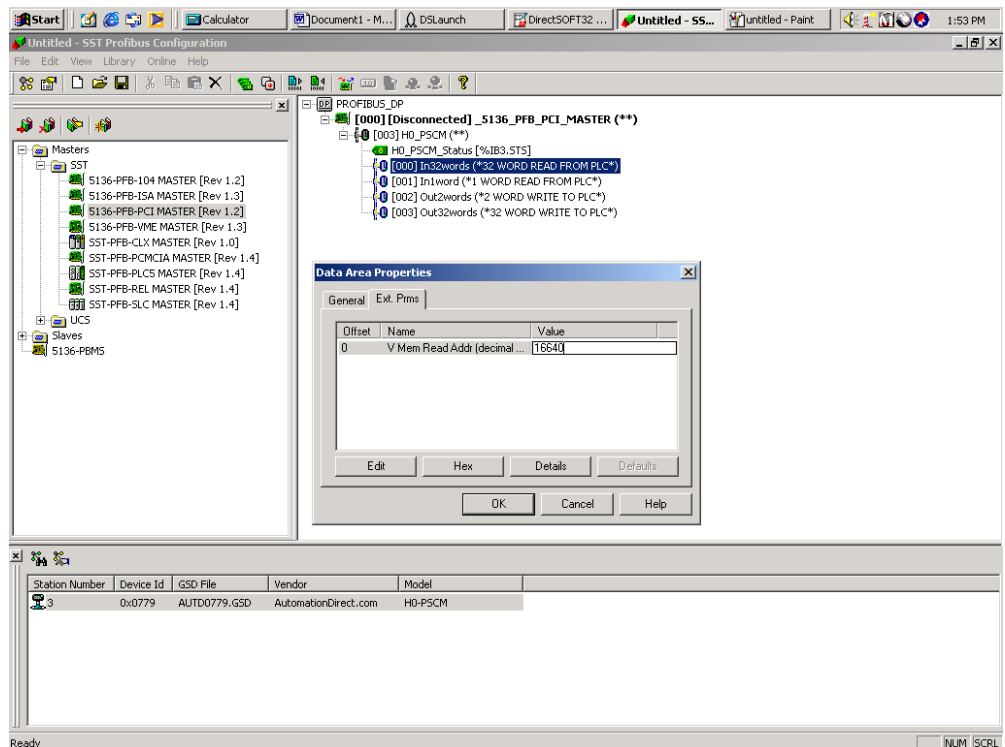
The window will now look like this. Now, drag the GSD file to the slave PLC. This will add the file to the configuration.



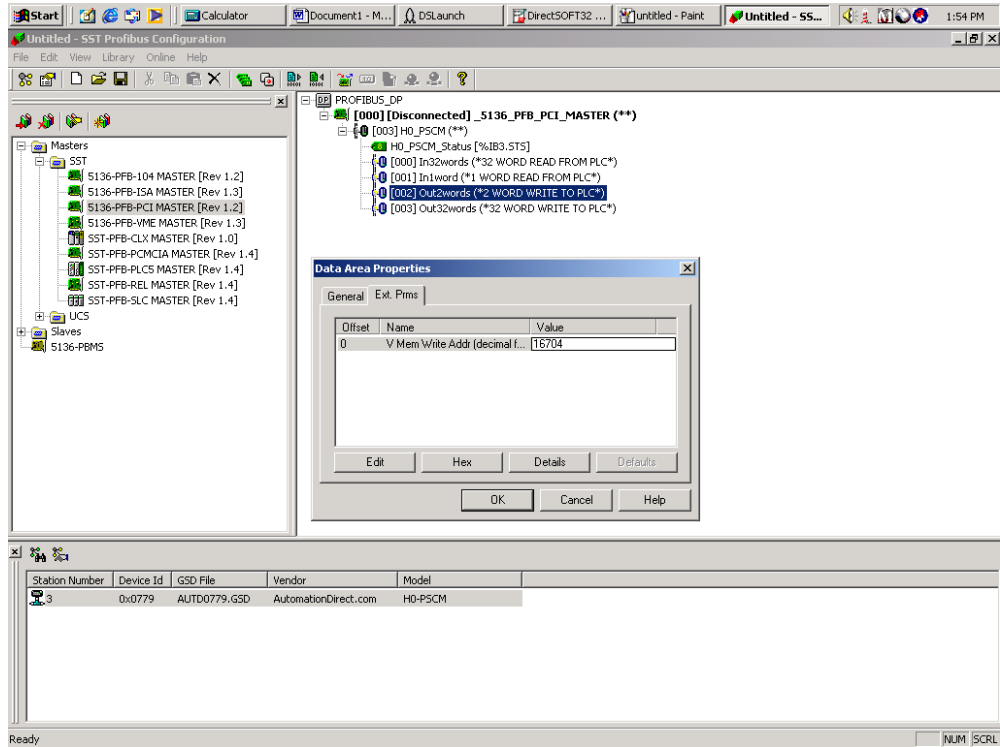
The window will look similar to the following. The In and Out 32 WORD addresses will need to be changed next. Right click on **[000] In32words** for the properties window.



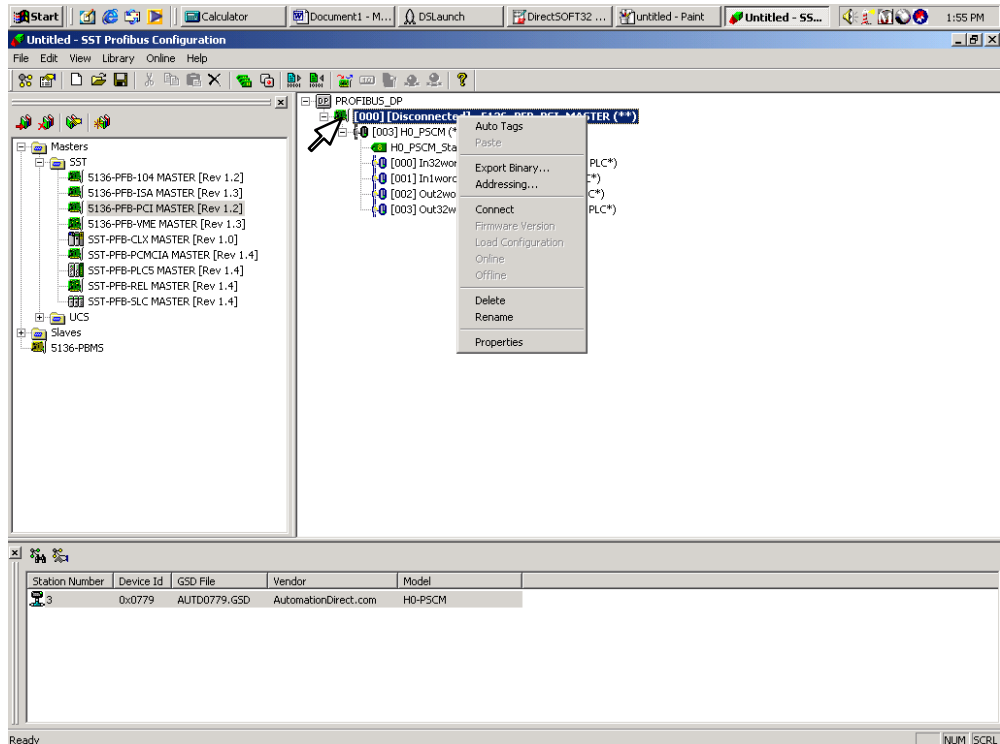
Select **Ext. Prms** and click on **Edit**. Change the **PLC** in address to 16640 (4100 hex) which is V40400.



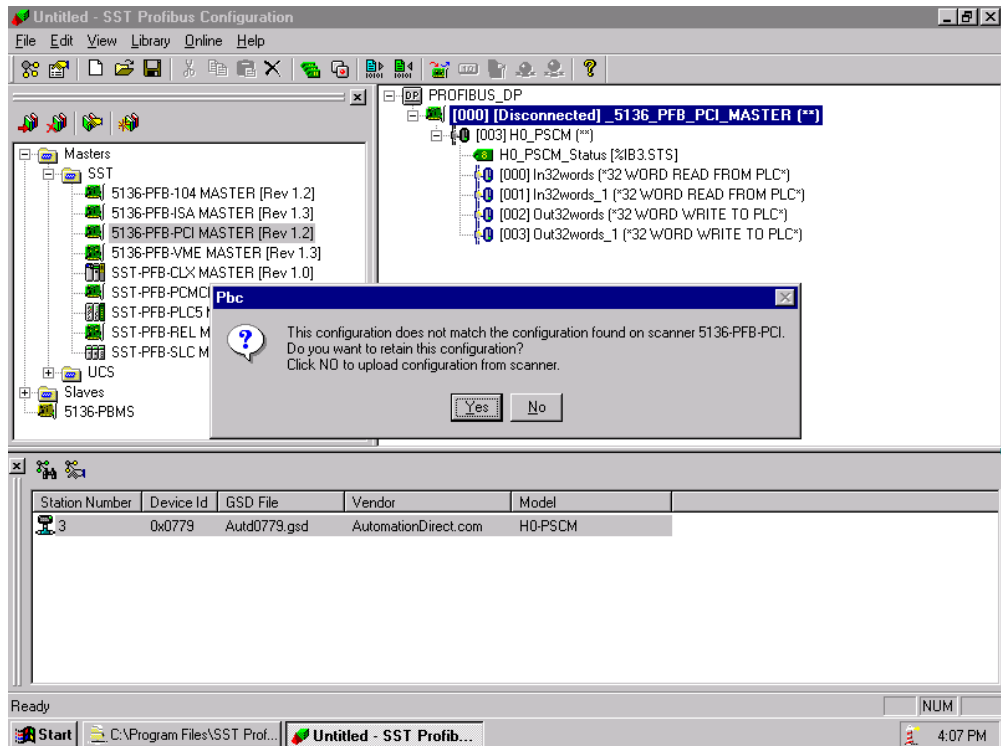
Next, select **[002] Out2words** to change the **PLC** out address to 16704 (4140 hex) which is V40500.



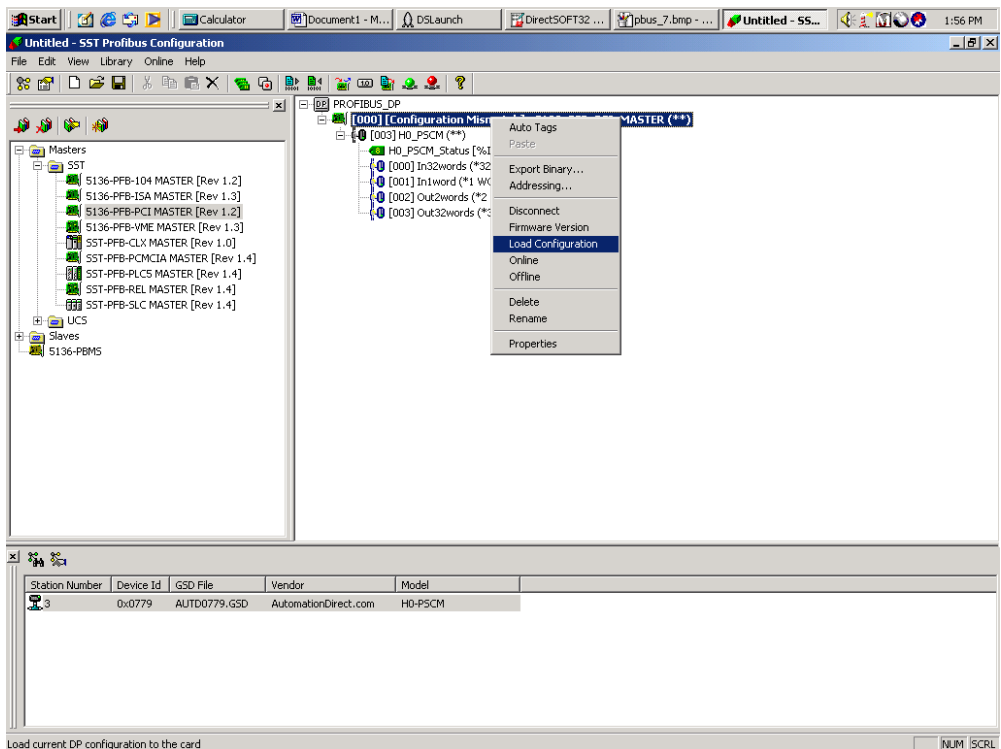
Now, connect to the SST card in the PC by right clicking on the Master icon. Select **Connect** in the drop-down window.



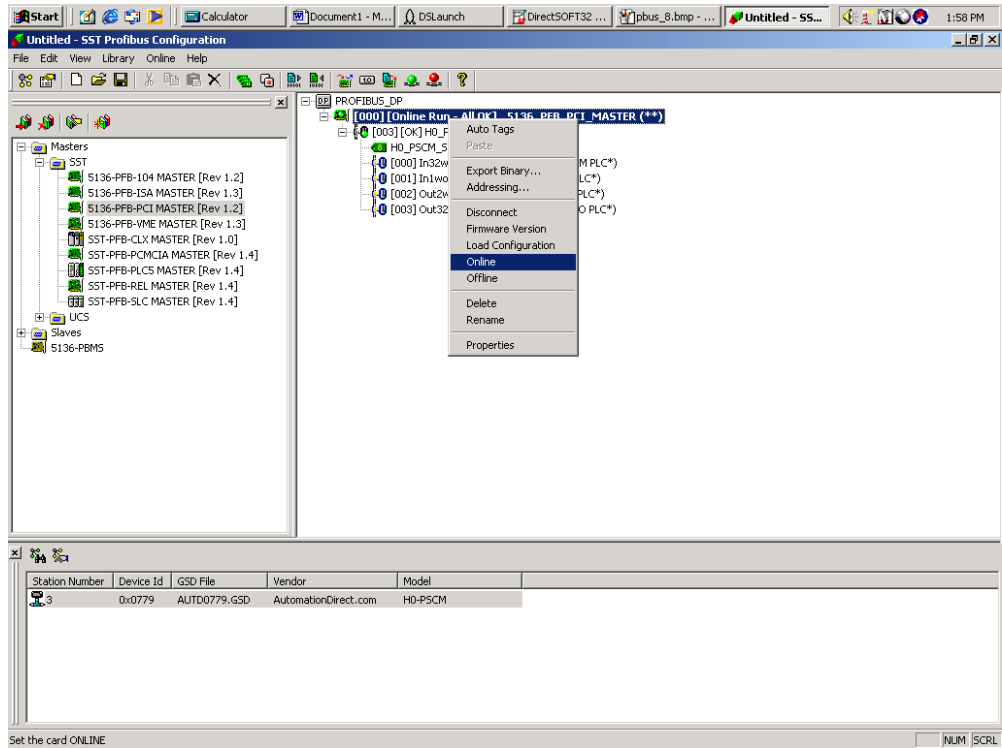
This message window will appear stating that there is a configuration mismatch, which is okay. Click **Yes** and right click on the Master again.



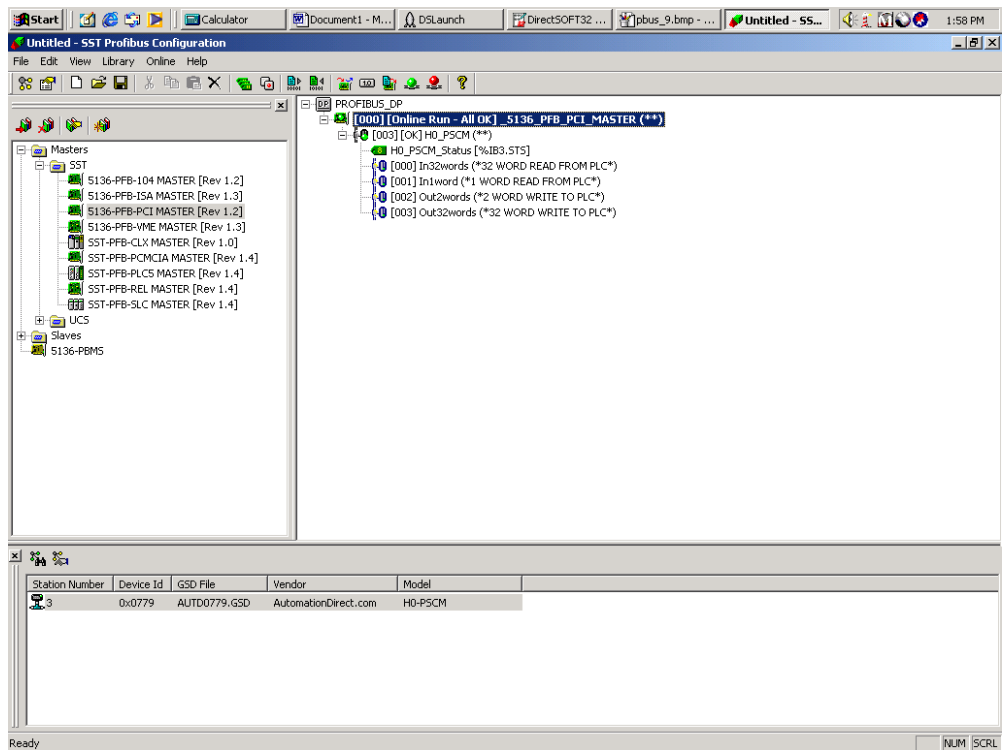
Load the configuration next by selecting **Load Configuration** in the drop-down window.



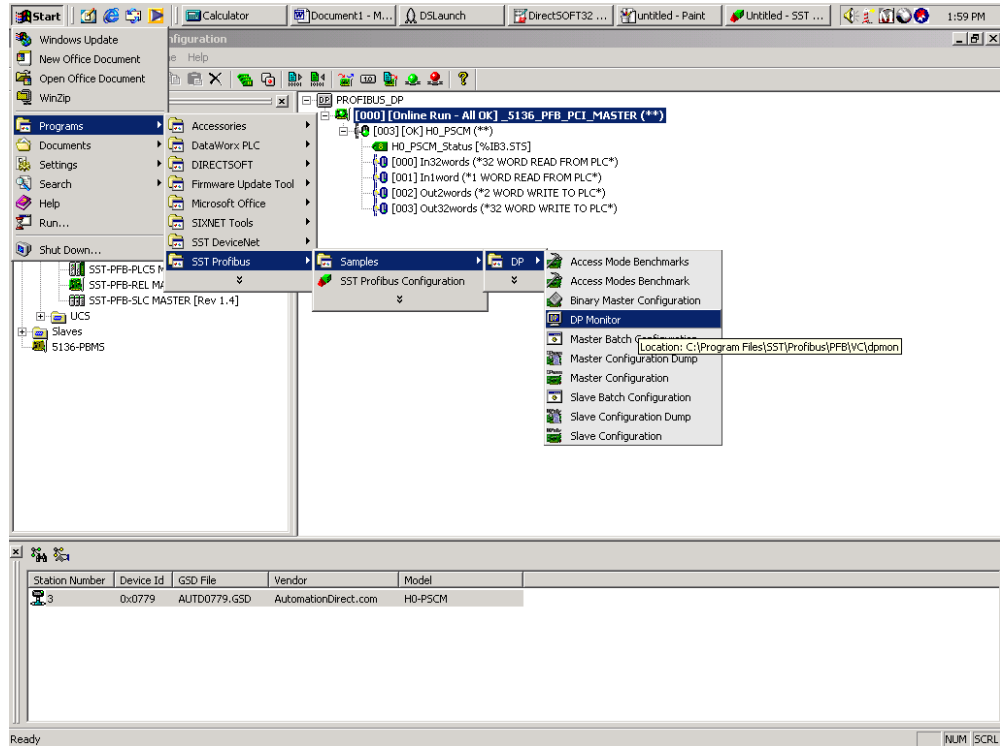
Now right click the Master icon to go on line. Select **Online** from the drop-down window.



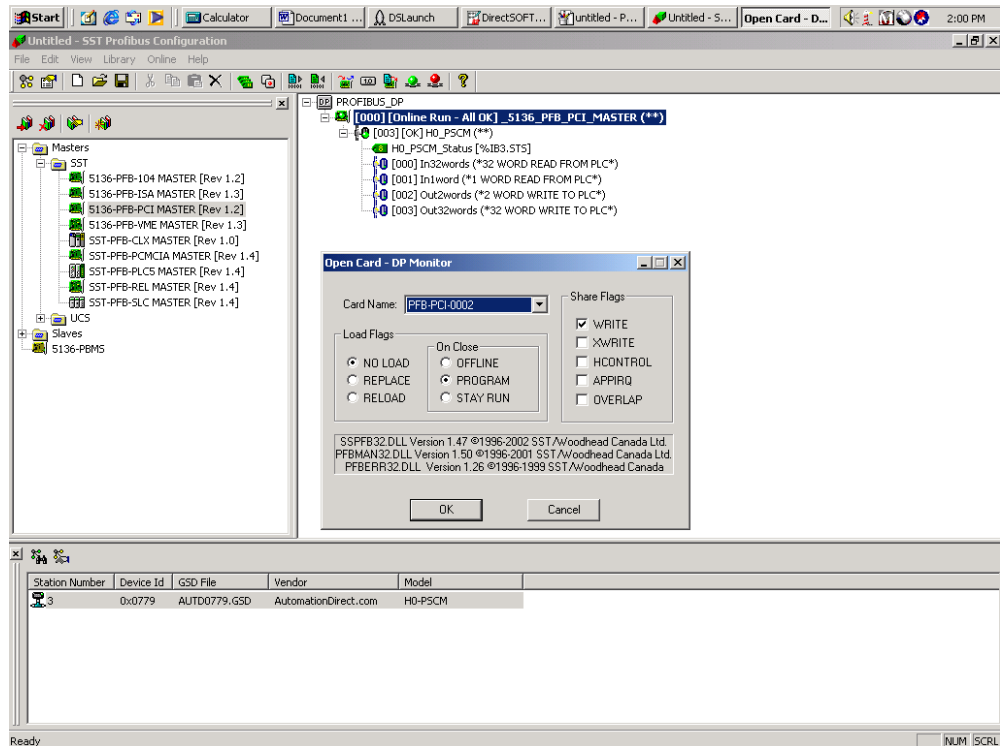
This window indicates the online status of the Profibus PCI Master Card.



You will want to monitor the I/O next. Select **DP Monitor** to view the I/O table. To do this, click on **Start > Programs > SST Profibus > DP > DP Monitor**.



Select the Profibus PCI card in the popup window and make your selections.



Select **Master Data** for the I/O status. In the **Data:** box, change the 0 to 1. The first output of the PLC will now be on. Observe the LED for output 0.

