

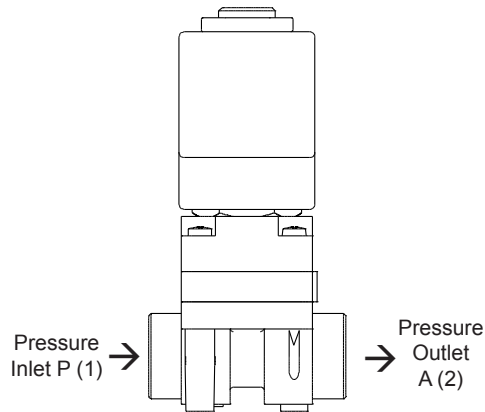
# Series DVM-2B Nylon

## Application and Installation Guide



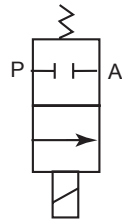
Series DVM-2B Nylon Media Separated 2-Way, 2 Position, Normally Open and Normally Closed Solenoid Valves.

### Two-Way, Two Position, Normally Closed



Position 1) Coil De-energized.  
Pressure inlet port P (1) is blocked to outlet port A (2).

Position 2) Coil Energized.  
Pressure inlet port P (1) is open to port A (2).



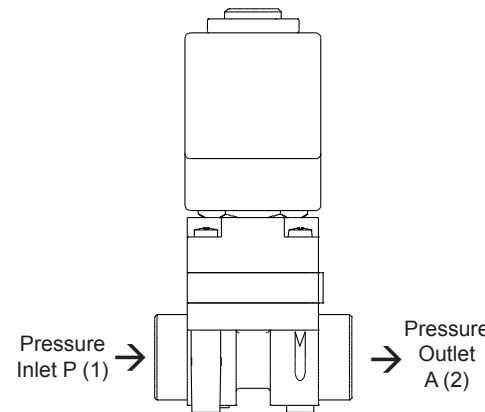
# Series DVM-2B Nylon

## Application and Installation Guide



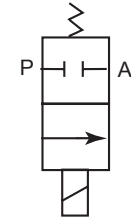
Series DVM-2B Nylon Media Separated 2-Way, 2 Position, Normally Open and Normally Closed Solenoid Valves.

### Two-Way, Two Position, Normally Closed

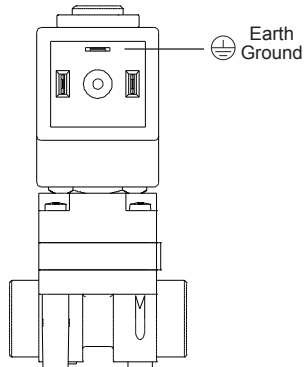


Position 1) Coil De-energized.  
Pressure inlet port P (1) is blocked to outlet port A (2).

Position 2) Coil Energized.  
Pressure inlet port P (1) is open to port A (2).

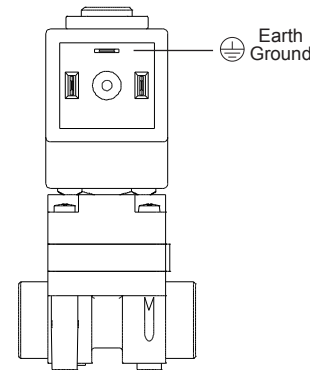


### Electrical Hook-Up



18 mm DIN Power leads connected to vertical pins on all versions. Not polarity sensitive.

### Electrical Hook-Up



18 mm DIN Power leads connected to vertical pins on all versions. Not polarity sensitive.



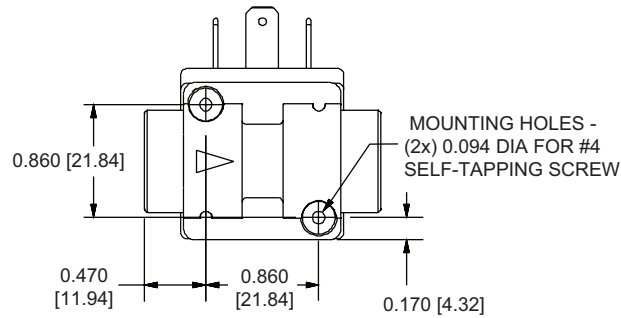
# Series DVM-2B Nylon

## Application and Installation Guide



### Mounting Diagram

#### Dimensions Inch [mm]



### Caution

Excessive use of pipe sealant can cause clogging and leakage. Please follow ASME standards for applying pipe sealant and tape. Do not use media, voltage or pressures other than that listed in specifications as valve malfunction could result. Misuse or misapplication of NITRA solenoid valves could cause serious bodily injury or property damage.



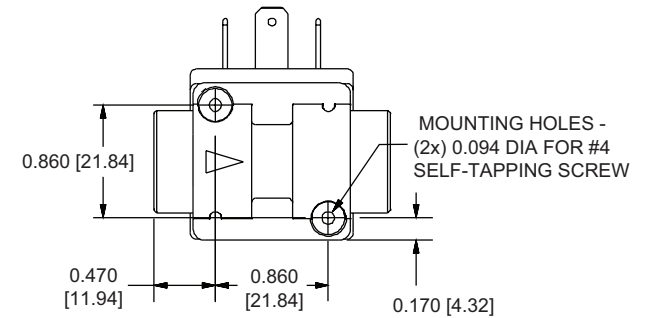
# Series DVM-2B Nylon

## Application and Installation Guide



### Mounting Diagram

#### Dimensions Inch [mm]



### Caution

Excessive use of pipe sealant can cause clogging and leakage. Please follow ASME standards for applying pipe sealant and tape. Do not use media, voltage or pressures other than that listed in specifications as valve malfunction could result. Misuse or misapplication of NITRA solenoid valves could cause serious bodily injury or property damage.

