

2.0 Installation of DataWorx WinPLC

Before you start, ensure that the WinPLC(s) and Server/Monitor computer(s) are connected to the network.

Decide what kind of installation you want:

1. Server and Monitor on Same Computer
 - a. Might be the only option if you have only one computer
 - b. Even if you plan on hosting the Server and Monitor on different computers, you can install both the Server and Monitor on the Server computer for quick installation and configuration
2. Server and Monitor on Different Computers
 - a. Ideal when the physical location of the Server is not easily accessible
 - b. Must note the IP Address or name of the Server

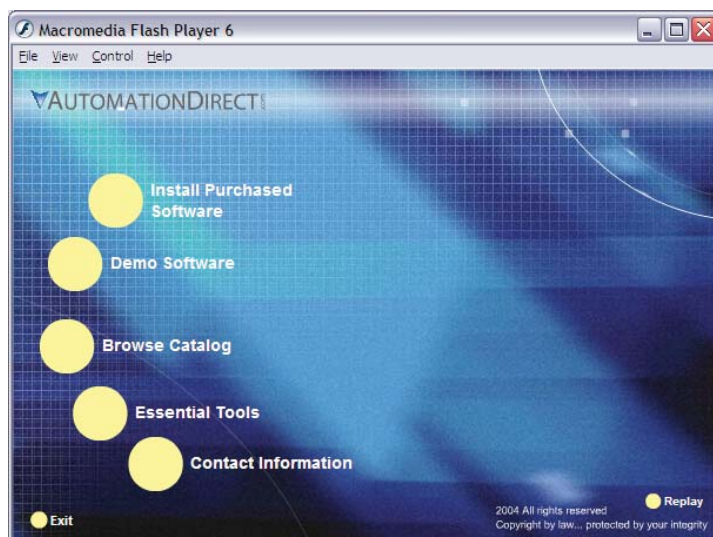
DataWorx WinPLC software is available on the AutomationDirect Product Showcase CD. To install DataWorx WinPLC, insert the AutomationDirect CD into your PC's CD drive. The CD should start automatically and open the installation window shown below.

Note:

If the Automation Direct CD does not start automatically, go to your Windows **START** button, select **RUN**, and type:

E:\setup.exe

Change the letter "E" to correspond to the letter for your CD drive. Then click **OK** and the program will start.



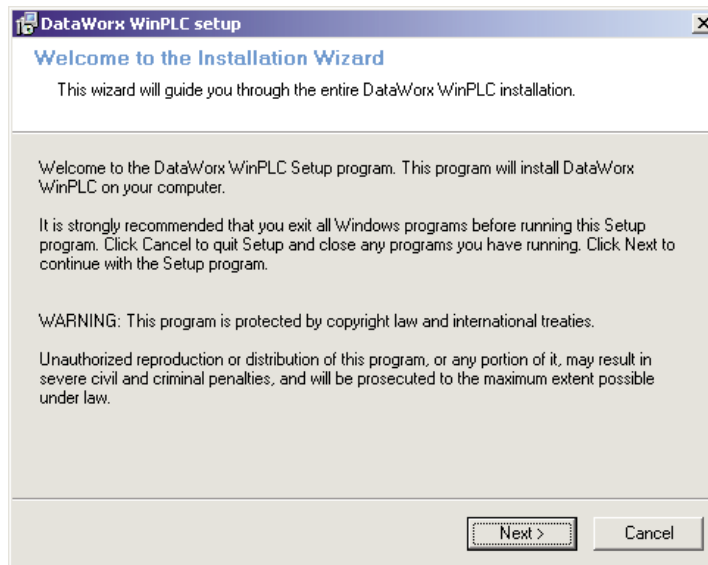
The AutomationDirect installation window will display all software options available on this CD. To install DataWorx WinPLC select the **INSTALL PURCHASED SOFTWARE** option. This selection opens the Product Key window shown below.



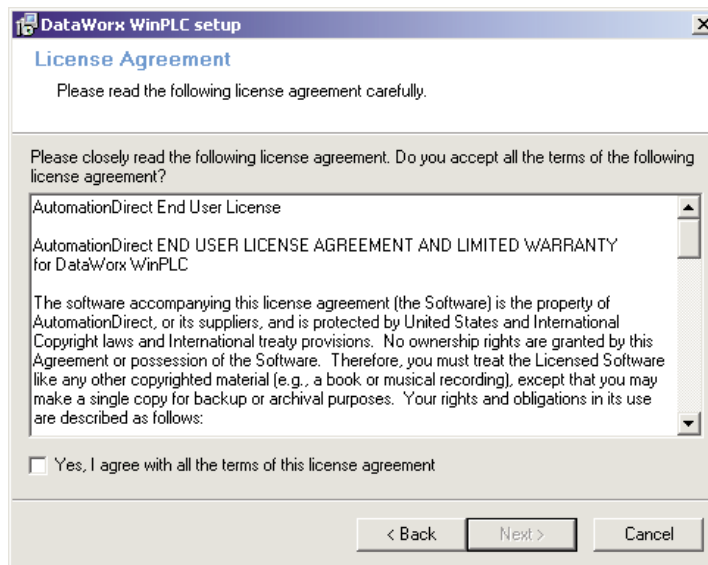
In the given field, enter the Product Key, located on the back cover of your CD case. This software package is protected by the Product Key. Only licensed users that have this key may install the software. After entering the Product Key, click **OK**.

DataWorx WinPLC

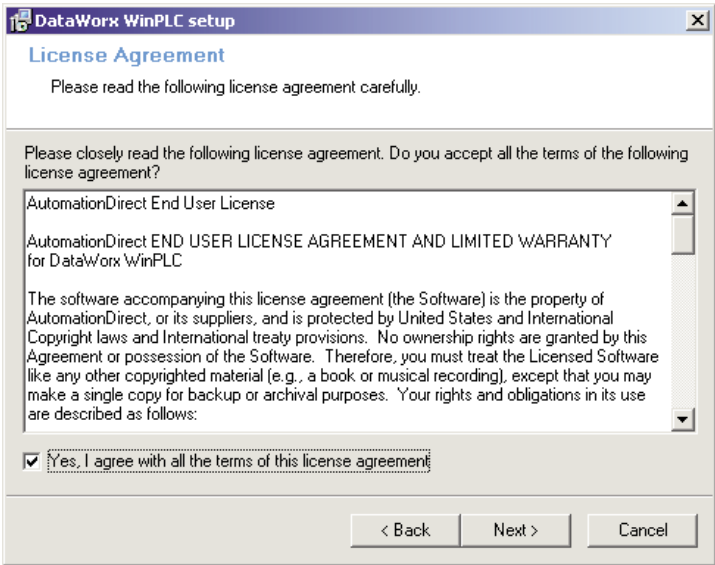
Start the installation program and click NEXT.



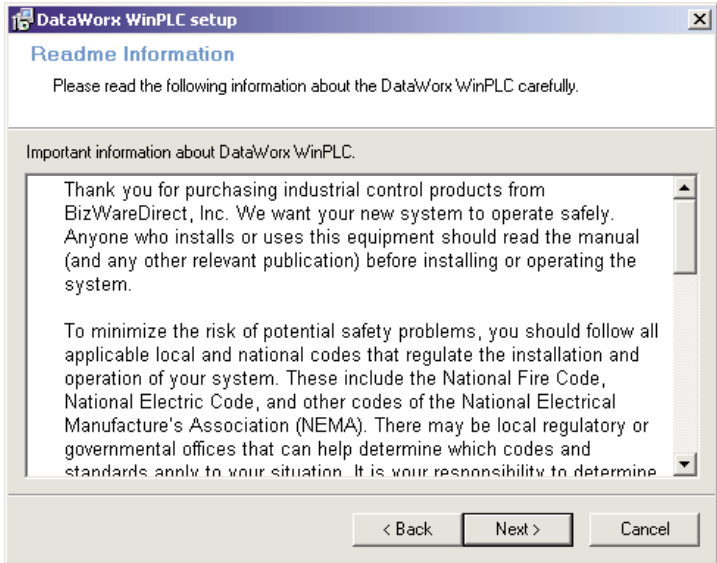
Read and make sure you understand the license agreement.



After reading and understanding the license agreement check the box next to the statement, "Yes, I agree with the terms of this license agreement." Click NEXT.

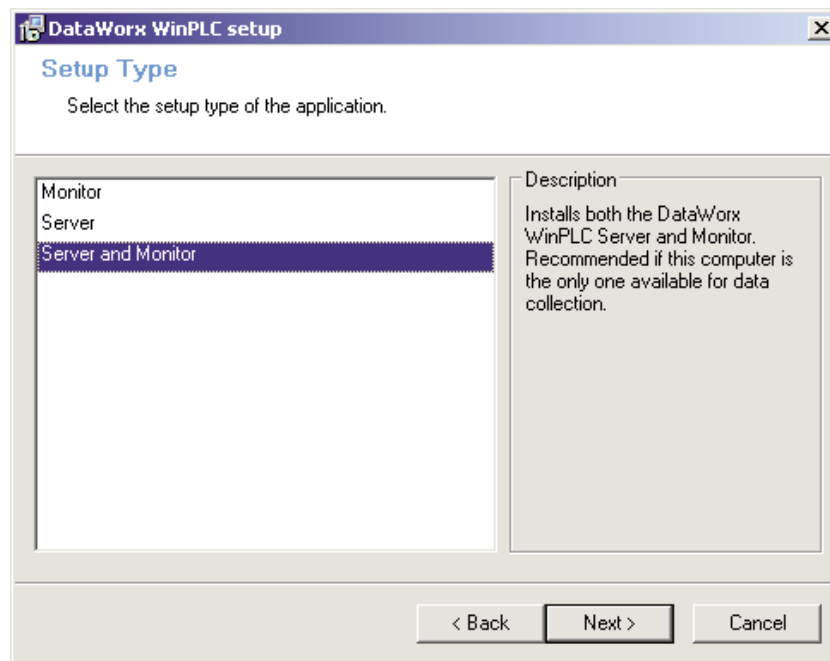


The next screen contains important readme information that may be pertinent to you. After reading this, click NEXT.



DataWorx WinPLC

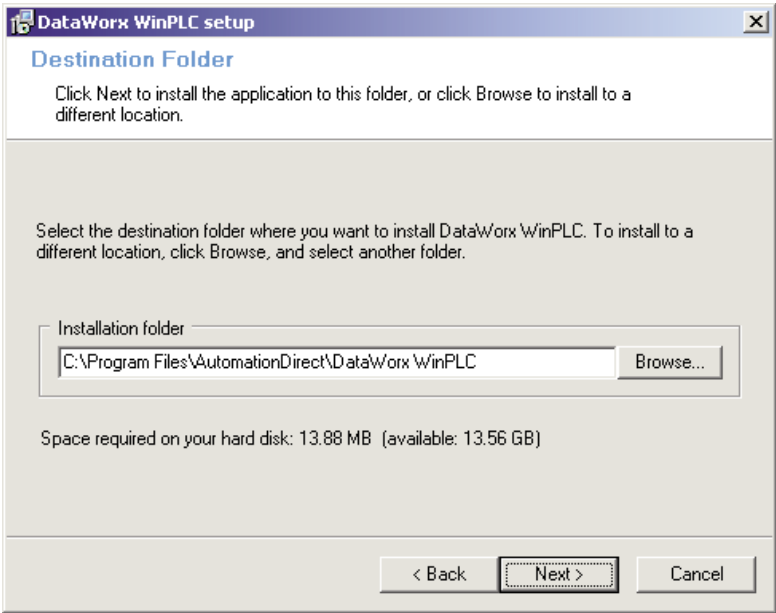
You will now be prompted for the setup type. There are three different types: Monitor, Server, and Server and Monitor. If you select a type from this list, a description of that type will appear on the right hand side, labeled "Description."



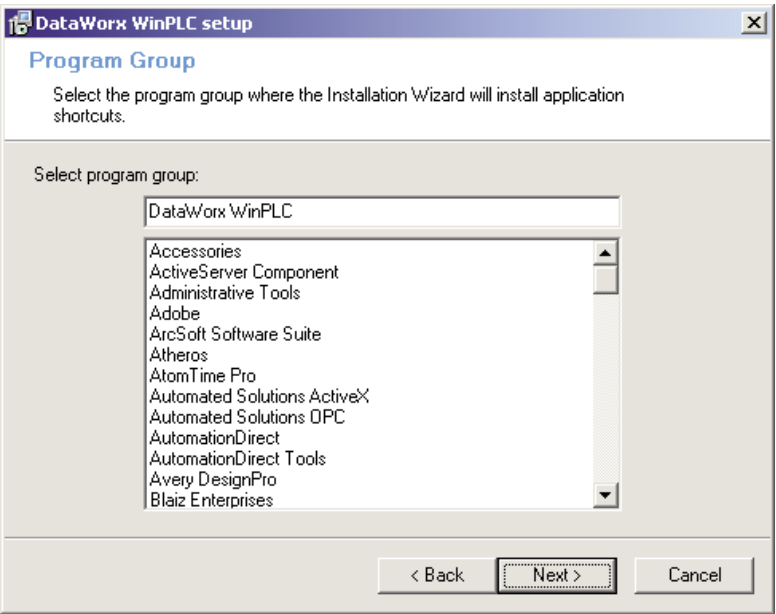
After you have determined which type of setup you want click **NEXT**, and you will be asked to choose a location in which to save the DataWorx WinPLC files. By default the files will go to:

c:\Program Files\AutomationDirect\DataWorx WinPLC

You can choose an alternative location for the DataWorx WinPLC files by clicking the **BROWSE** button.

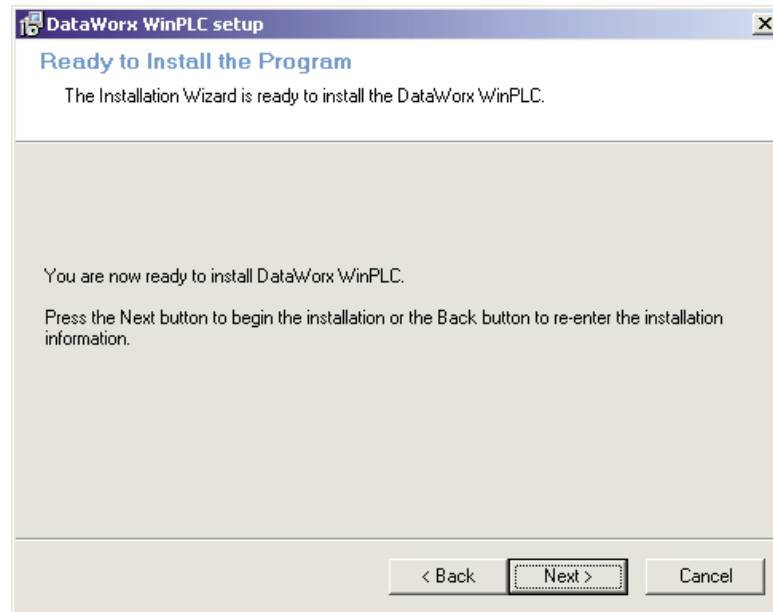


Once satisfied with the location of the files, click NEXT and you will be prompted for the program group. By default, the program group is “DataWorx WinPLC.” This program group can be changed by entering a new name into the textbox.

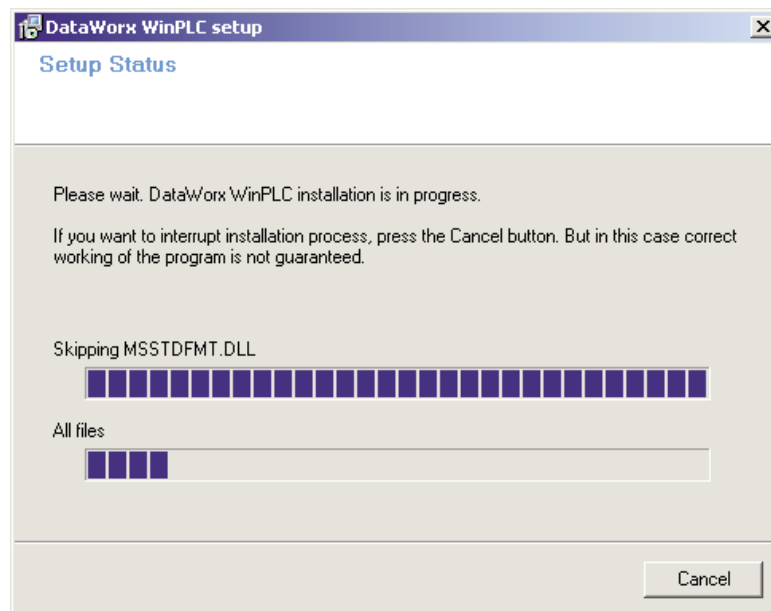


DataWorx WinPLC

Click **NEXT**. You will be prompted to begin installation. Click the **BACK** button at any time to review the settings before committing to the installation. Once satisfied with the installation settings, click the **NEXT** button.



You should now see a meter indicating the installation progress.



Installation can be stopped at any time throughout the process by clicking the **CANCEL** button.

Once installation is complete, you will be notified that DataWorx WinPLC has been successfully installed. Click **FINISH** to exit the installation wizard.

