

PROTOS^x

PX-272-2 – Two-point 230VAC / 30VDC Discrete Relay Output Terminal

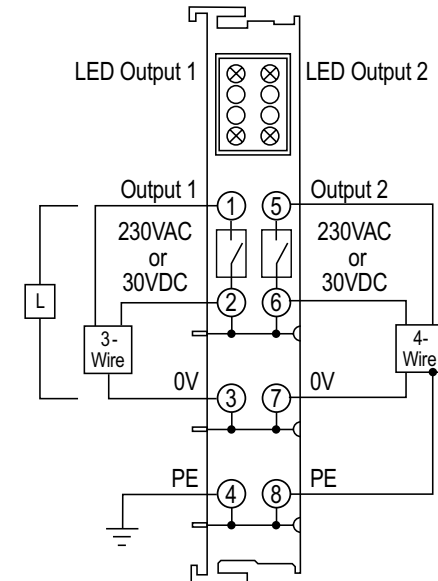
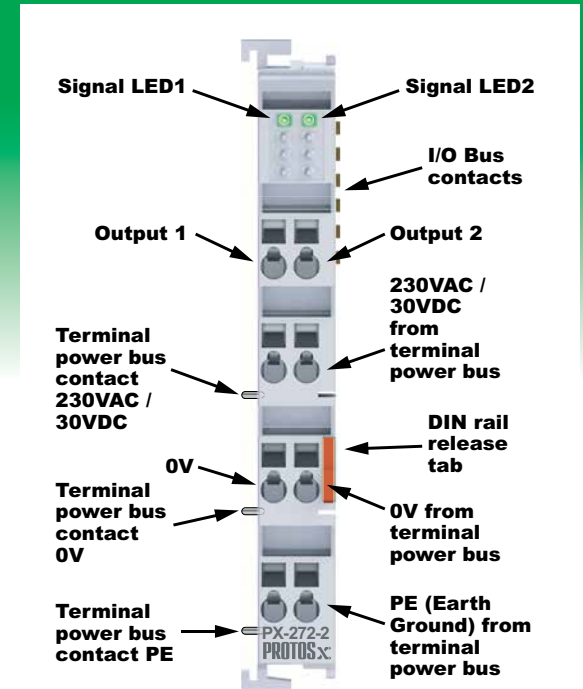
The PX-272-2 Relay Output Terminal provides two 230VAC/30VDC 5A outputs with LED status. Intended for use with 4-wire, 3-wire and 2-wire devices. Use with the Protos X™ I/O System.



Protos X™ is a trademark of Automationdirect.com Incorporated

Sales 800-633-0405

PX-272-2 Output Terminal Specifications	
Outputs Per Terminal	2
Commons Per Terminal	2
Output Type	SPST Relay, normally open contact (DC – sourcing only)
Output Data Bytes Used	1/4 byte (2-bits)
Output Power Source	230VAC / 30VDC provided via terminal power bus
Current Consumption (from Terminal Power Bus)	(ON resistance typ 2.4Ω, max 3.2Ω) + load
Operating Voltage	230VAC / 30VDC
Maximum Load Current	5A per point
Maximum Load Current with Resistive Load	AC: 5A @230VAC, 1250VA DC: 5A @ 30VDC, 150W
Maximum Load Current with Inductive Load, cosφ=0.4, L/R=7ms	AC: 2A @230VAC DC: 2A @ 30VDC
Minimum Load (Approximate)	10mA @ 5VDC (as supplied) 100mA @ 20VDC (after approx. ≥ 100mA has been switched at least once)
Load Type	Resistive, inductive, lamp
Switching Times	Reaction Time: 10ms max. Release Time: 4ms max. Bounce Time: 5ms max.
Contact Material	Silver Cadmium Oxide
Current Consumption (from I/O Bus)	80mA
Electrical Isolation	500Vms (I/O bus/field potential), 2500VDC (1 min.)
Heat Dissipation	1W max
Switching Frequency at Maximum Contact Load	10/minute
Maximum Contact Resistance	< 30mΩ
Minimum Insulation Resistance	100MΩ @ 500VDC
Mechanical Operating Life	20,000,000 switchin operations
Electrical Operating Life	Minimum 100,000 switching operations with resistive loads
Test Voltage Between Open Contacts	750V for 1 minute
Adjacent Mounting on Bus Terminals with Power Contact	Yes, 230VAC / 30VDC only
Adjacent Mounting on Bus Terminals without Power Contact	No
Passes Terminal Bus Power	Yes
Passes PE Bus	Yes
Status Indicators	2, indicates output is on
General Specifications	
Operating Temperature	32° to 131°F (0° to 55°C)
Storage Temperature	13° to 185°F (-25° to 85°C)
Relative Humidity	5% to 95%, non-condensing
Environment Air	No corrosive gases permitted
Mounting/Orientation Restrictions	35mm DIN rail/None
Vibration	conforms to EN 60068-2-6
Shock	conforms to EN 60068-2-27, EN 60068-2-29
Noise Immunity	conforms to EN 61000-6-2/ EN61000-6-4
Protection Class	IP20
Weight	85g
Dimensions (WxHxD)	12 x 100 x 68.8 mm (0.47 x 3.94 x 2.71 in)
Agency Approvals	UL/cUL File No. E157382, CE



Note: Terminal PX-908 is recommended to isolate terminal power or use PX-970 to supply and isolate power.

www.automationdirect.com

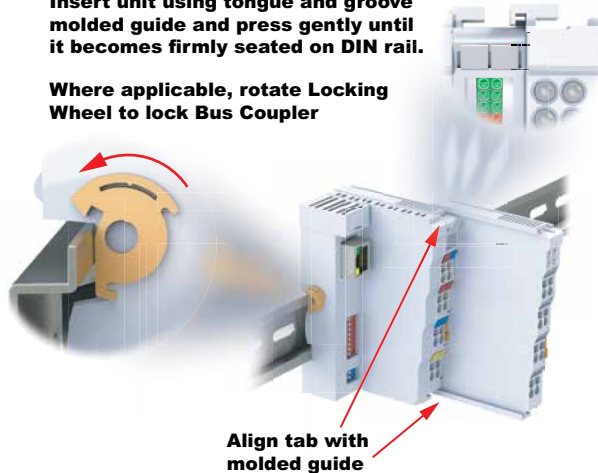
Tech Support 770-844-4200

MOUNTING

For system assembly, first attach a bus coupler by snapping onto 35mm DIN rail and securing into position using the DIN rail locking wheel (where applicable) located on the left side of the coupler. To add a bus terminal, insert unit onto right side of bus coupler using the tongue and groove at the top and bottom of the unit, pressing gently until it snaps onto the DIN rail. A proper connection cannot be made by sliding the units together on the DIN rail. When correctly installed, no significant gap can be seen between the attached units. Bus connection is made through the six slide contacts located on the upper right side of the units. Add up to 64 bus terminals per bus coupler, including a bus end terminal.

Insert unit using tongue and groove molded guide and press gently until it becomes firmly seated on DIN rail.

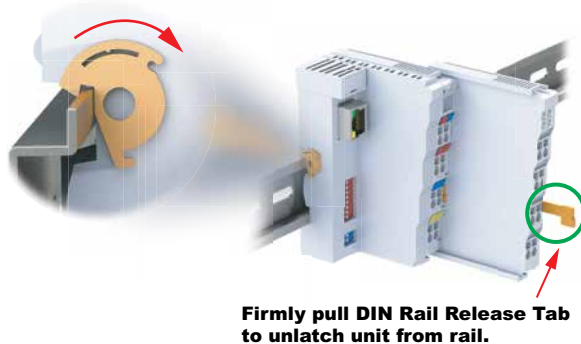
Where applicable, rotate Locking Wheel to lock Bus Coupler



REMOVAL

A locking mechanism prevents individual units from being pulled off. For bus terminal removal, pull the orange DIN rail release tab firmly to unlatch the unit from the rail. If attached to other terminal units, slide unit forward until released. For bus couplers with locking wheels, release the DIN rail locking wheel, then pull firmly on DIN rail release tab.

Where applicable, rotate Locking Wheel to unlock Bus Coupler



IMPORTANT

For complete assembly instructions and compatibility between terminals see the PX-USER-M manual available for free download at www.automationdirect.com.

HOT SWAP NOT PERMITTED

Always remove power from the system before inserting or removing bus terminals or couplers as failure to do so could cause malfunction or damage to the terminals, couplers or other connected devices.

Document Name	Edition/Revision	Date
PX-272-2-DS	1st ED. Rev. B	6/8/2015

Copyright 2015, AutomationDirect.com Incorporated/All Rights Reserved Worldwide.

WARNING

To minimize the risk of potential safety problems, you should follow all applicable local and national codes that regulate the installation and operation of your equipment. These codes vary from area to area and it is your responsibility to determine which codes should be followed, and to verify that the equipment, installation, and operation are in compliance with the latest revision of these codes.

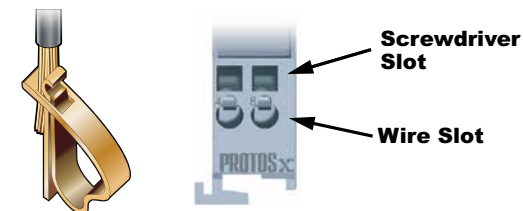
Equipment damage or serious injury to personnel can result from the failure to follow all applicable codes and standards. We do not guarantee the products described in this publication are suitable for your particular application, nor do we assume any responsibility for your product design, installation, or operation.

If you have any questions concerning the installation or operation of this equipment, or if you need additional information, please call Technical Support at 770-844-4200.

This publication is based on information that was available at the time it was printed. At AutomationDirect.com® we constantly strive to improve our products and services, so we reserve the right to make changes to the products and/or publications at any time without notice and without any obligation. This publication may also discuss features that may not be available in certain revisions of the product.

WIRING CONNECTION

Wire connection is made through a spring clamp style terminal. This terminal is designed for a single-conductor solid or stranded wire. Wire connection is made by firmly pushing the screwdriver into the screwdriver slot, inserting the wire into the wire slot and removing the screwdriver, locking the wire into position.



Wiring Specifications

Connection Type	Spring Clamp Terminals
Wire Gauge / Wire Cross Section	28-14 AWG / 0.08 - 2.5mm ²
Screwdriver Width	2.5mm (0.10) such as our TW-SD-MSL-2
Wire Stripping Length	8mm