



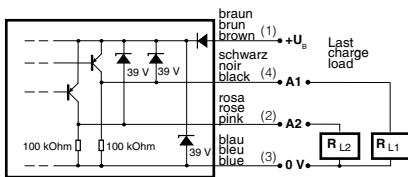
Amplifier for synthetic optical fibers

PNP type - light/dark-ON output

Part number **DFP-AP-1A**

Sensing range (on mat white paper) **200 mm**
with CF-DB1-20

Wiring



U_B 10 ... 30 VDC
 I_A 200 mA max.
Housing PBTP
A1 light/dark-ON
A2 excess gain

COVADC123



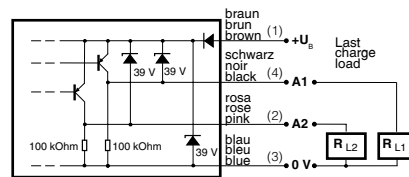
Amplifier for synthetic optical fibers

PNP type - light/dark-ON output

Part number **DFP-AP-1A**

Sensing range (on mat white paper) **200 mm**
with CF-DB1-20

Wiring



U_B 10 ... 30 VDC
 I_A 200 mA max.
Housing PBTP
A1 light/dark-ON
A2 excess gain

COVADC123



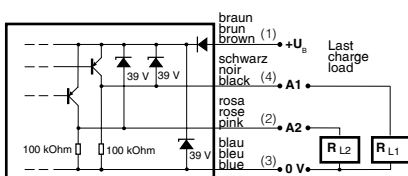
Amplifier for synthetic optical fibers

PNP type - light/dark-ON output

Part number **DFP-AP-1A**

Sensing range (on mat white paper) **200 mm**
with CF-DB1-20

Wiring



U_B 10 ... 30 VDC
 I_A 200 mA max.
Housing PBTP
A1 light/dark-ON
A2 excess gain

COVADC123



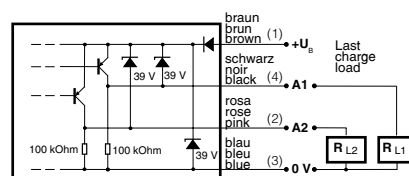
Amplifier for synthetic optical fibers

PNP type - light/dark-ON output

Part number **DFP-AP-1A**

Sensing range (on mat white paper) **200 mm**
with CF-DB1-20

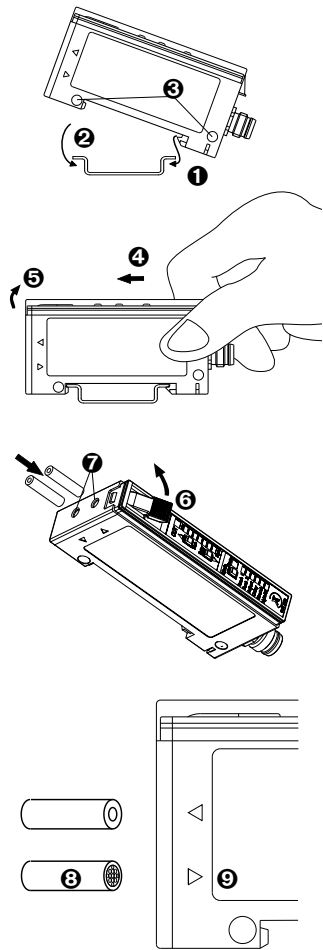
Wiring



U_B 10 ... 30 VDC
 I_A 200 mA max.
Housing PBTP
A1 light/dark-ON
A2 excess gain

COVADC123





Device mounting

- ▶▶ Mounting of the device is most easily effected by snapping **1** / **2** onto a top-hat rail (according to DIN / EN 50022).
- ▶▶ Alternatively, fixing can be effected using M3 screws through the fixing holes **3** provided.
- ▶▶ To remove the device from the rail, push towards the optical fiber **4**, and lift **5**.

Fixing the optical fibers

- ▶▶ Lift catch **6**.
- ▶▶ Insert the optical fibers through the two holes **7** provided into the device.
- ▶▶ Lower catch **6**.

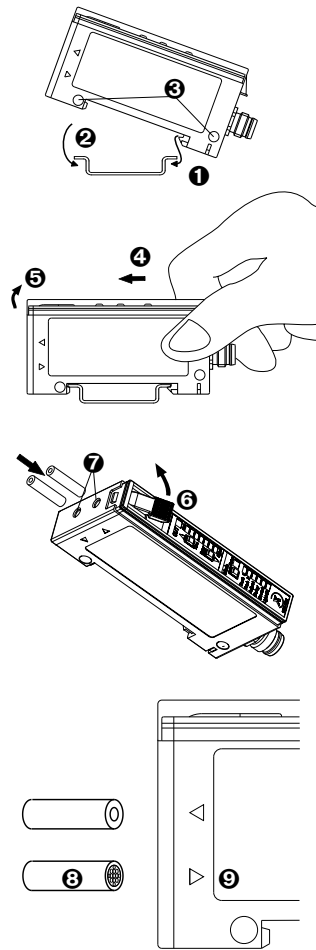
Important:

- ▶▶ When inserting the optical fibers, the resistance of the device's internal O-ring seal must be overcome.
- ▶▶ The optical fibers must be fed right to the stop without fail.
- ▶▶ The optical fibers must not be crushed.
- ▶▶ The sequence (emitter / receiver) is usually immaterial, however:
- ▶▶ With coaxial optical fibers, the optical fiber bundle **3** must be connected on the receiver side **9**. The emitter and receiver openings are marked with arrows on the housing.



These proximity switches **must not be used** in applications where the **safety of people** is dependent on their functioning. Terms of delivery and rights to change design reserved.

This product is protected by one or several of the following US patents: 5 182 612, 5 767 444, 5 675 143, 5 764 351, 6 031 430, 6 130 489, 6 133 654, 6 133 988. Further patents pending.



Device mounting

- ▶▶ Mounting of the device is most easily effected by snapping **1** / **2** onto a top-hat rail (according to DIN / EN 50022).
- ▶▶ Alternatively, fixing can be effected using M3 screws through the fixing holes **3** provided.
- ▶▶ To remove the device from the rail, push towards the optical fiber **4**, and lift **5**.

Fixing the optical fibers

- ▶▶ Lift catch **6**.
- ▶▶ Insert the optical fibers through the two holes **7** provided into the device.
- ▶▶ Lower catch **6**.

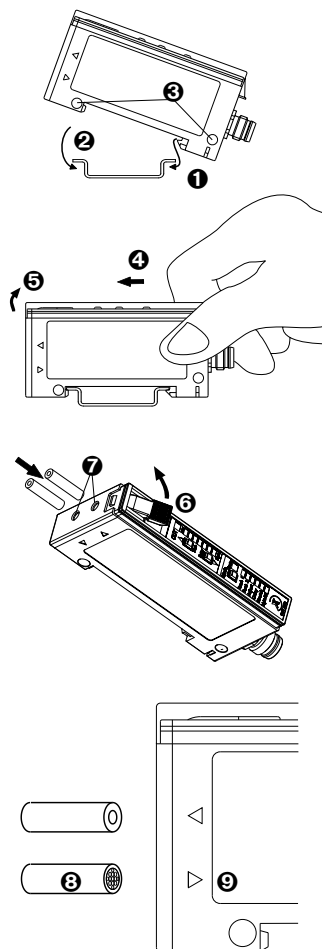
Important:

- ▶▶ When inserting the optical fibers, the resistance of the device's internal O-ring seal must be overcome.
- ▶▶ The optical fibers must be fed right to the stop without fail.
- ▶▶ The optical fibers must not be crushed.
- ▶▶ The sequence (emitter / receiver) is usually immaterial, however:
- ▶▶ With coaxial optical fibers, the optical fiber bundle **3** must be connected on the receiver side **9**. The emitter and receiver openings are marked with arrows on the housing.



These proximity switches **must not be used** in applications where the **safety of people** is dependent on their functioning. Terms of delivery and rights to change design reserved.

This product is protected by one or several of the following US patents: 5 182 612, 5 767 444, 5 675 143, 5 764 351, 6 031 430, 6 130 489, 6 133 654, 6 133 988. Further patents pending.



Device mounting

- ▶▶ Mounting of the device is most easily effected by snapping **1** / **2** onto a top-hat rail (according to DIN / EN 50022).
- ▶▶ Alternatively, fixing can be effected using M3 screws through the fixing holes **3** provided.
- ▶▶ To remove the device from the rail, push towards the optical fiber **4**, and lift **5**.

Fixing the optical fibers

- ▶▶ Lift catch **6**.
- ▶▶ Insert the optical fibers through the two holes **7** provided into the device.
- ▶▶ Lower catch **6**.

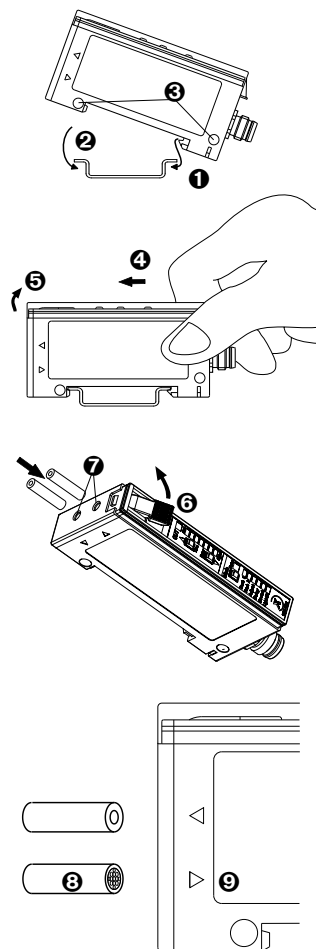
Important:

- ▶▶ When inserting the optical fibers, the resistance of the device's internal O-ring seal must be overcome.
- ▶▶ The optical fibers must be fed right to the stop without fail.
- ▶▶ The optical fibers must not be crushed.
- ▶▶ The sequence (emitter / receiver) is usually immaterial, however:
- ▶▶ With coaxial optical fibers, the optical fiber bundle **3** must be connected on the receiver side **9**. The emitter and receiver openings are marked with arrows on the housing.



These proximity switches **must not be used** in applications where the **safety of people** is dependent on their functioning. Terms of delivery and rights to change design reserved.

This product is protected by one or several of the following US patents: 5 182 612, 5 767 444, 5 675 143, 5 764 351, 6 031 430, 6 130 489, 6 133 654, 6 133 988. Further patents pending.



Device mounting

- ▶▶ Mounting of the device is most easily effected by snapping **1** / **2** onto a top-hat rail (according to DIN / EN 50022).
- ▶▶ Alternatively, fixing can be effected using M3 screws through the fixing holes **3** provided.
- ▶▶ To remove the device from the rail, push towards the optical fiber **4**, and lift **5**.

Fixing the optical fibers

- ▶▶ Lift catch **6**.
- ▶▶ Insert the optical fibers through the two holes **7** provided into the device.
- ▶▶ Lower catch **6**.

Important:

- ▶▶ When inserting the optical fibers, the resistance of the device's internal O-ring seal must be overcome.
- ▶▶ The optical fibers must be fed right to the stop without fail.
- ▶▶ The optical fibers must not be crushed.
- ▶▶ The sequence (emitter / receiver) is usually immaterial, however:
- ▶▶ With coaxial optical fibers, the optical fiber bundle **3** must be connected on the receiver side **9**. The emitter and receiver openings are marked with arrows on the housing.



These proximity switches **must not be used** in applications where the **safety of people** is dependent on their functioning. Terms of delivery and rights to change design reserved.

This product is protected by one or several of the following US patents: 5 182 612, 5 767 444, 5 675 143, 5 764 351, 6 031 430, 6 130 489, 6 133 654, 6 133 988. Further patents pending.



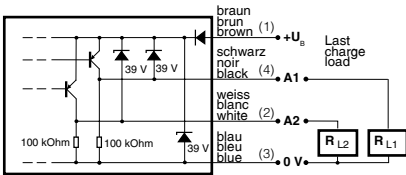
Amplifier for synthetic optical fibers

PNP type - light/dark-ON output

Part number **DFP-AP-1F**

Sensing range (on mat white paper) **200 mm**
with CF-DB1-20

Wiring



U_B 10 ... 30 VDC
 I_A 200 mA max.

Housing PBTP

A1 light/dark-ON
A2 excess gain

Pin assignment (device) :



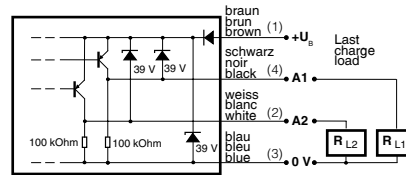
Amplifier for synthetic optical fibers

PNP type - light/dark-ON output

Part number **DFP-AP-1F**

Sensing range (on mat white paper) **200 mm**
with CF-DB1-20

Wiring



U_B 10 ... 30 VDC
 I_A 200 mA max.

Housing PBTP

A1 light/dark-ON
A2 excess gain

Pin assignment (device) :



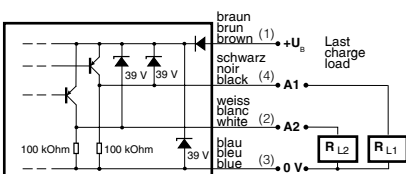
Amplifier for synthetic optical fibers

PNP type - light/dark-ON output

Part number **DFP-AP-1F**

Sensing range (on mat white paper) **200 mm**
with CF-DB1-20

Wiring

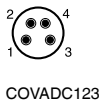


U_B 10 ... 30 VDC
 I_A 200 mA max.

Housing PBTP

A1 light/dark-ON
A2 excess gain

Pin assignment (device) :



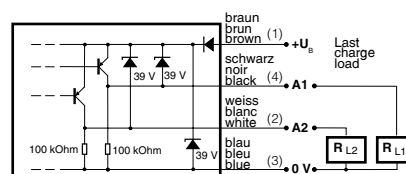
Amplifier for synthetic optical fibers

PNP type - light/dark-ON output

Part number **DFP-AP-1F**

Sensing range (on mat white paper) **200 mm**
with CF-DB1-20

Wiring

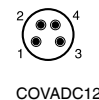


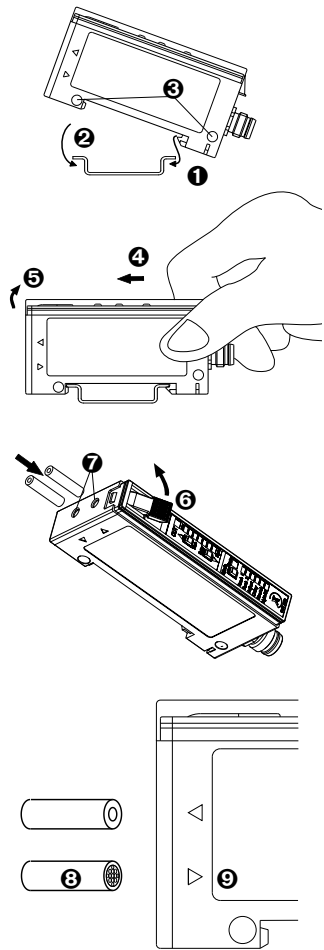
U_B 10 ... 30 VDC
 I_A 200 mA max.

Housing PBTP

A1 light/dark-ON
A2 excess gain

Pin assignment (device) :





Device mounting

- ▶▶ Mounting of the device is most easily effected by snapping **1** / **2** onto a top-hat rail (according to DIN / EN 50022).
- ▶▶ Alternatively, fixing can be effected using M3 screws through the fixing holes **3** provided.
- ▶▶ To remove the device from the rail, push towards the optical fiber **4**, and lift **5**.

Fixing the optical fibers

- ▶▶ Lift catch **6**.
- ▶▶ Insert the optical fibers through the two holes **7** provided into the device.
- ▶▶ Lower catch **6**.

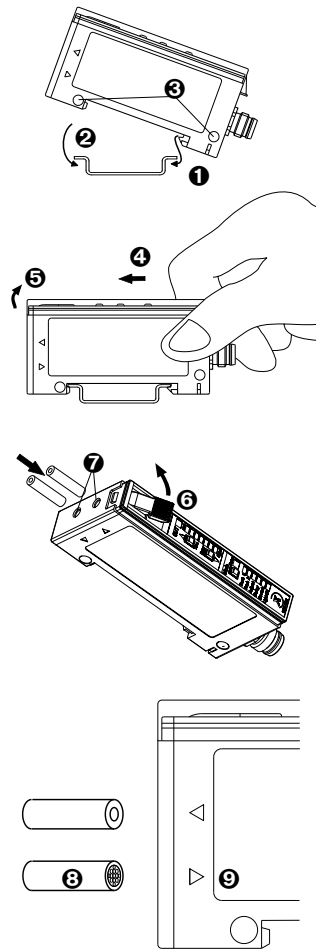
Important:

- ▶▶ When inserting the optical fibers, the resistance of the device's internal O-ring seal must be overcome.
- ▶▶ The optical fibers must be fed right to the stop without fail.
- ▶▶ The optical fibers must not be crushed.
- ▶▶ The sequence (emitter / receiver) is usually immaterial, however:
- ▶▶ With coaxial optical fibers, the optical fiber bundle **3** must be connected on the receiver side **9**. The emitter and receiver openings are marked with arrows on the housing.



These proximity switches **must not be used** in applications where the **safety of people** is dependent on their functioning. Terms of delivery and rights to change design reserved.

This product is protected by one or several of the following US patents: 5 182 612, 5 767 444, 5 675 143, 5 764 351, 6 031 430, 6 130 489, 6 133 654, 6 133 988. Further patents pending.



Device mounting

- ▶▶ Mounting of the device is most easily effected by snapping **1** / **2** onto a top-hat rail (according to DIN / EN 50022).
- ▶▶ Alternatively, fixing can be effected using M3 screws through the fixing holes **3** provided.
- ▶▶ To remove the device from the rail, push towards the optical fiber **4**, and lift **5**.

Fixing the optical fibers

- ▶▶ Lift catch **6**.
- ▶▶ Insert the optical fibers through the two holes **7** provided into the device.
- ▶▶ Lower catch **6**.

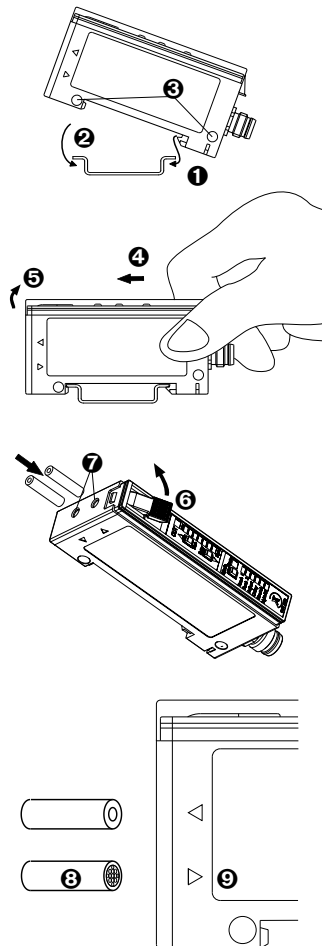
Important:

- ▶▶ When inserting the optical fibers, the resistance of the device's internal O-ring seal must be overcome.
- ▶▶ The optical fibers must be fed right to the stop without fail.
- ▶▶ The optical fibers must not be crushed.
- ▶▶ The sequence (emitter / receiver) is usually immaterial, however:
- ▶▶ With coaxial optical fibers, the optical fiber bundle **3** must be connected on the receiver side **9**. The emitter and receiver openings are marked with arrows on the housing.



These proximity switches **must not be used** in applications where the **safety of people** is dependent on their functioning. Terms of delivery and rights to change design reserved.

This product is protected by one or several of the following US patents: 5 182 612, 5 767 444, 5 675 143, 5 764 351, 6 031 430, 6 130 489, 6 133 654, 6 133 988. Further patents pending.



Device mounting

- ▶▶ Mounting of the device is most easily effected by snapping **1** / **2** onto a top-hat rail (according to DIN / EN 50022).
- ▶▶ Alternatively, fixing can be effected using M3 screws through the fixing holes **3** provided.
- ▶▶ To remove the device from the rail, push towards the optical fiber **4**, and lift **5**.

Fixing the optical fibers

- ▶▶ Lift catch **6**.
- ▶▶ Insert the optical fibers through the two holes **7** provided into the device.
- ▶▶ Lower catch **6**.

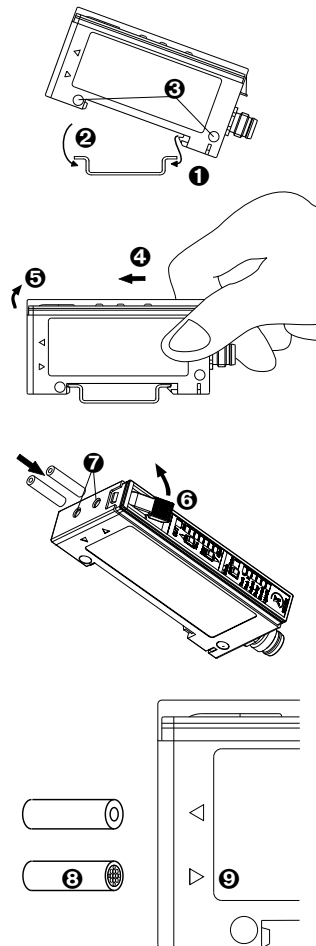
Important:

- ▶▶ When inserting the optical fibers, the resistance of the device's internal O-ring seal must be overcome.
- ▶▶ The optical fibers must be fed right to the stop without fail.
- ▶▶ The optical fibers must not be crushed.
- ▶▶ The sequence (emitter / receiver) is usually immaterial, however:
- ▶▶ With coaxial optical fibers, the optical fiber bundle **3** must be connected on the receiver side **9**. The emitter and receiver openings are marked with arrows on the housing.



These proximity switches **must not be used** in applications where the **safety of people** is dependent on their functioning. Terms of delivery and rights to change design reserved.

This product is protected by one or several of the following US patents: 5 182 612, 5 767 444, 5 675 143, 5 764 351, 6 031 430, 6 130 489, 6 133 654, 6 133 988. Further patents pending.



Device mounting

- ▶▶ Mounting of the device is most easily effected by snapping **1** / **2** onto a top-hat rail (according to DIN / EN 50022).
- ▶▶ Alternatively, fixing can be effected using M3 screws through the fixing holes **3** provided.
- ▶▶ To remove the device from the rail, push towards the optical fiber **4**, and lift **5**.

Fixing the optical fibers

- ▶▶ Lift catch **6**.
- ▶▶ Insert the optical fibers through the two holes **7** provided into the device.
- ▶▶ Lower catch **6**.

Important:

- ▶▶ When inserting the optical fibers, the resistance of the device's internal O-ring seal must be overcome.
- ▶▶ The optical fibers must be fed right to the stop without fail.
- ▶▶ The optical fibers must not be crushed.
- ▶▶ The sequence (emitter / receiver) is usually immaterial, however:
- ▶▶ With coaxial optical fibers, the optical fiber bundle **3** must be connected on the receiver side **9**. The emitter and receiver openings are marked with arrows on the housing.



These proximity switches **must not be used** in applications where the **safety of people** is dependent on their functioning. Terms of delivery and rights to change design reserved.

This product is protected by one or several of the following US patents: 5 182 612, 5 767 444, 5 675 143, 5 764 351, 6 031 430, 6 130 489, 6 133 654, 6 133 988. Further patents pending.