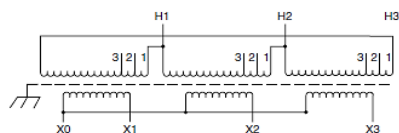
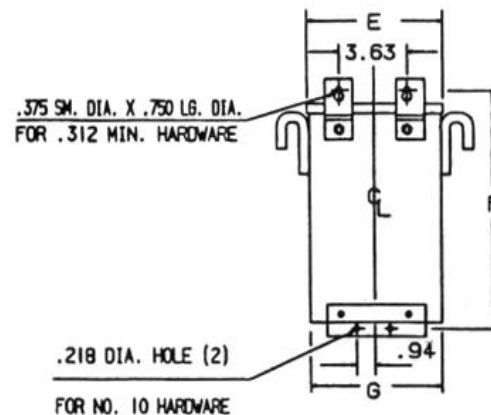
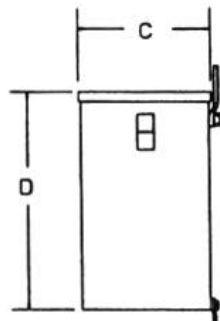
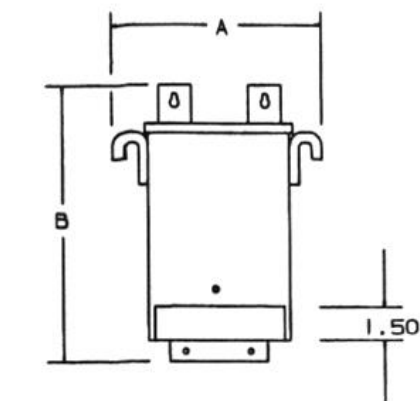
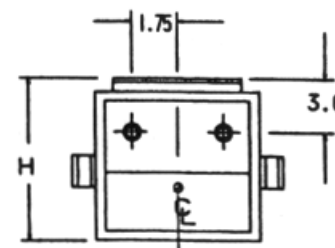


REVISIONS



NOTES:

- I. KNOCKOUTS:  
 1.69 DIA. FOR 1.25 CONDUIT  
 1.13 DIA. FOR .75 CONDUIT



BOTTOM

Primary Volts	Connect Primary Lines To	Inter-Connect	Connect Secondary Lines To
480	H1, H2, H3	1	
456	H1, H2, H3	2	
432	H1, H2, H3	3	

Secondary Volts			
208			X1, X2, X3
120 1 phase			X1 to X0 X2 to X0 X3 to X0

KVA	CATALOG NUMBER	VOLTAGE		MARKINGS	WEIGHT	PHASE	FREQUENCY
		HIGH	LOW				
3.0	<b>T2A533081S</b>	480Δ	208Y/120		75 Lbs	3φ	60Hz
Temp Rise:	115°C	<b>TYPICAL PERFORMANCE DATA</b>					
Insulation:	180°C	Regulation @ 100% PF		Windings:	CU		
Standards:	UL/CSA	<b>Encapsulated</b>					
	<b>A</b>	<b>B</b>	<b>C</b>	<b>D</b>	<b>E</b>	<b>F</b>	<b>G</b>
	12.37	11.63	7.12	9.06	9.87	10.89	9.75
							<b>H</b>
							7.47



DATE: 3-Feb-16

TYPE NO: