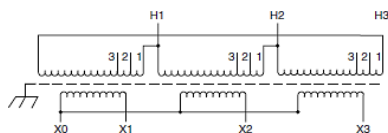
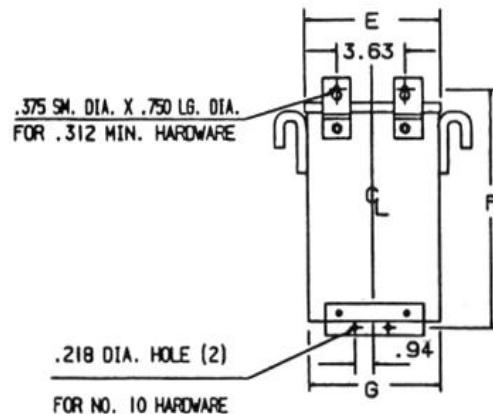
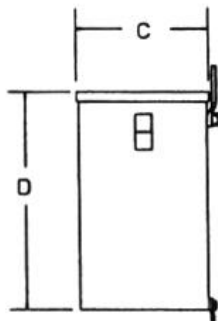
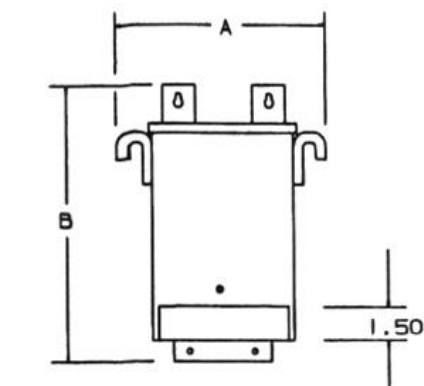


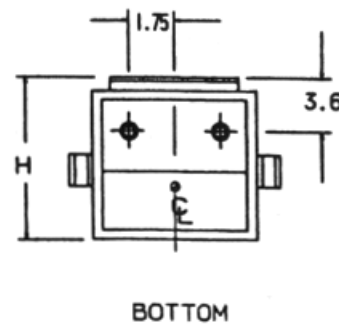
REVISIONS



Primary Volts	Connect Primary Lines To	Inter-Connect	Connect Secondary Lines To
480	H1, H2, H3	1	
456	H1, H2, H3	2	
432	H1, H2, H3	3	
Secondary Volts			
208			X1, X2, X3
120 1 phase			X1 to X0 X2 to X0 X3 to X0

NOTES:

- I. KNOCKOUTS:
1.69 DIA. FOR 1.25 CONDUIT
1.13 DIA. FOR .75 CONDUIT



KVA	CATALOG NUMBER	VOLTAGE		MARKINGS	WEIGHT	PHASE	FREQUENCY
		HIGH	LOW				
6.0	T2A533091S	480Δ	208Y/120		107 Lbs	3φ	60Hz

Temp Rise:		115°C	TYPICAL PERFORMANCE DATA				
Insulation:		180°C	Regulation @ 100% PF		Windings:	AL	
Standards:		UL/CSA	Encapsulated				

A	B	C	D	E	F	G	H
14.77	12.55	8.47	9.98	11.67	11.83	11.55	8.82

DATE: 3-Feb-16

TYPE NO: