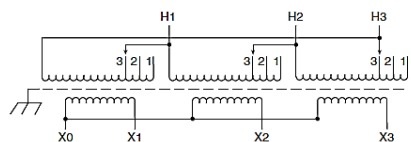
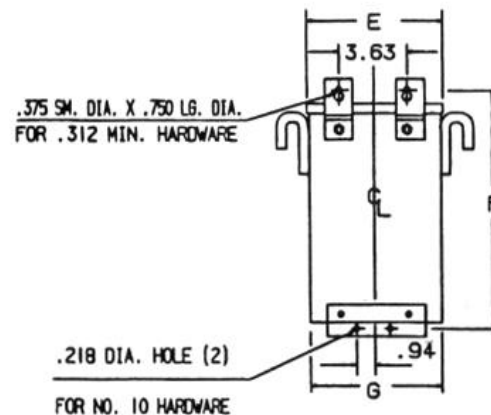
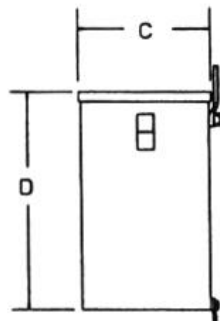
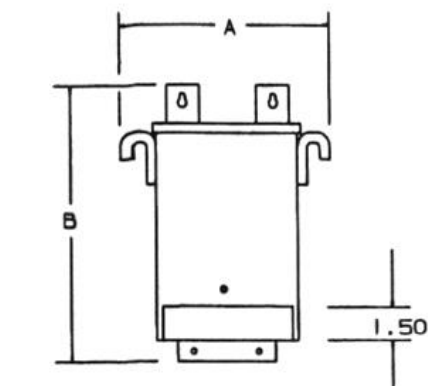
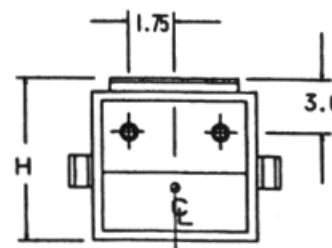


REVISIONS



NOTES:

- 1. KNOCKOUTS:  
 1.69 DIA. FOR 1.25 CONDUIT  
 1.13 DIA. FOR .75 CONDUIT



BOTTOM

Primary Volts	Connect Primary Lines To	Inter-Connect	Connect Secondary Lines To
600	H1, H2, H3	1	
570	H1, H2, H3	2	
540	H1, H2, H3	3	

Secondary Volts			
208			X1, X2, X3
120 1 phase			X1 to X0 X2 to X0 X3 to X0

KVA	CATALOG NUMBER	VOLTAGE		MARKINGS	WEIGHT	PHASE	FREQUENCY
		HIGH	LOW				
6.0	<b>T2A793311S</b>	600Δ	208Y/120		107 Lbs	3φ	60Hz

Temp Rise:		115°C	TYPICAL PERFORMANCE DATA				
Insulation:		180°C	Regulation @ 100% PF		Windings:	AL	
Standards:		UL/CSA	<b>Encapsulated</b>				

A	B	C	D	E	F	G	H
14.77	12.55	8.47	9.98	11.67	11.83	11.55	8.82



DATE: 3-Feb-16

TYPE NO: