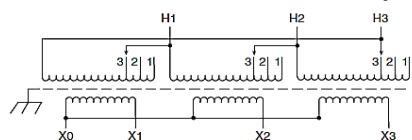
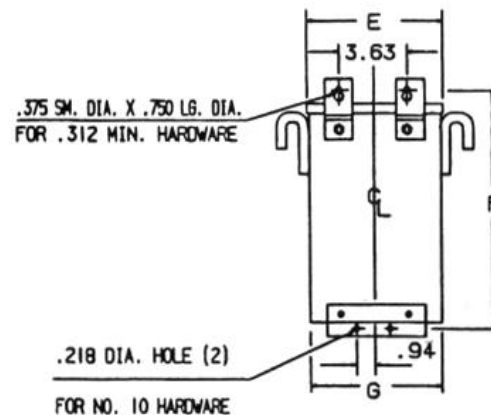
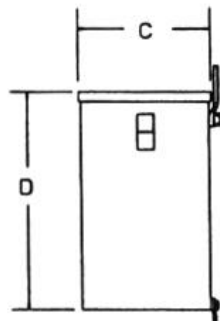
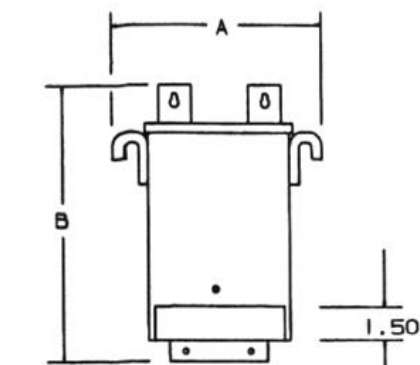
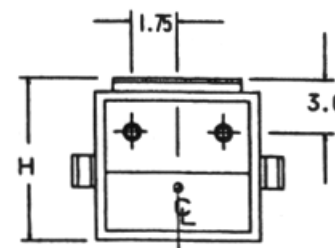


REVISIONS



NOTES:

- I. KNOCKOUTS:
1.69 DIA. FOR 1.25 CONDUIT
1.13 DIA. FOR .75 CONDUIT



BOTTOM

Primary Volts	Connect Primary Lines To	Inter-Connect	Connect Secondary Lines To
600	H1, H2, H3	1	
570	H1, H2, H3	2	
540	H1, H2, H3	3	

Secondary Volts

208		X1, X2, X3
120		X1 to X0 X2 to X0 X3 to X0
1 phase		

KVA	CATALOG NUMBER	VOLTAGE		MARKINGS	WEIGHT	PHASE	FREQUENCY
		HIGH	LOW				
9.0	T2A793321S	600Δ	208Y/120		180 Lbs	3φ	60Hz

Temp Rise:		115°C	TYPICAL PERFORMANCE DATA					
Insulation:		180°C	Regulation @ 100% PF		Windings:	AL		
Standards:		UL/CSA	Encapsulated					

A	B	C	D	E	F	G	H
17.77	15.28	11.17	12.71	15.27	14.03	15.15	11.52



DATE: 3-Feb-16

TYPE NO: