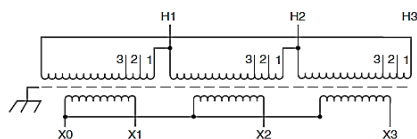
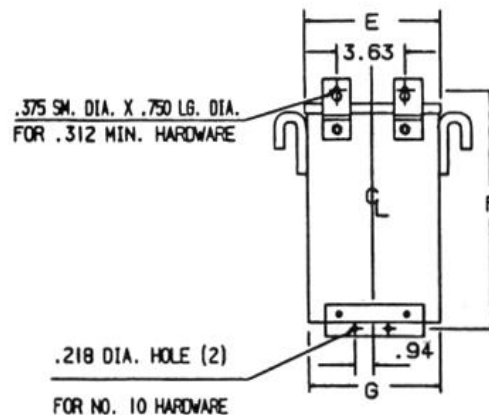
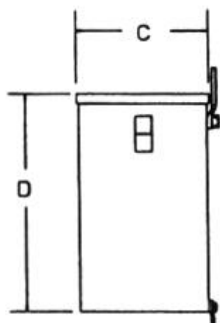
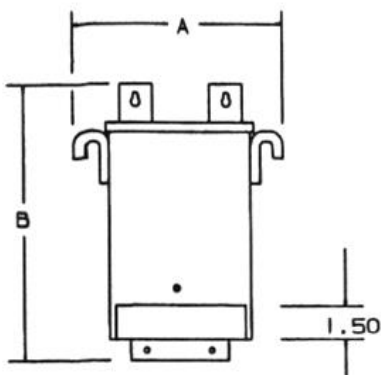
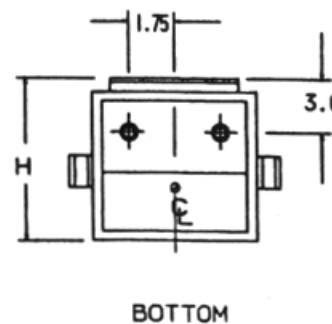


REVISIONS



NOTES:

- I. KNOCKOUTS:
1.69 DIA. FOR 1.25 CONDUIT
1.13 DIA. FOR .75 CONDUIT



Primary Volts	Connect Primary Lines To	Inter-Connect	Connect Secondary Lines To
600	H1, H2, H3	1	
570	H1, H2, H3	2	
540	H1, H2, H3	3	

Secondary Volts

480		X1, X2, X3
277 1 phase		X1 to X0 X2 to X0 X3 to X0

KVA	CATALOG NUMBER	VOLTAGE		MARKINGS	WEIGHT	PHASE	FREQUENCY								
		HIGH	LOW												
6.0	T2A795171S	600Δ	480Y/277		107 Lbs	3φ	60Hz								
Temp Rise:		115°C	TYPICAL PERFORMANCE DATA												
Insulation:		180°C					Regulation @ 100% PF		Windings:	AL					
Standards:		UL/CSA	Encapsulated												
A		B		C		D		E		F		G		H	
14.77		12.55		8.47		9.98		11.67		11.83		11.55		8.82	



DATE: 3-Feb-16

TYPE NO: