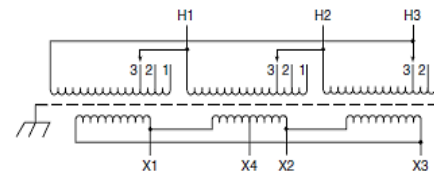
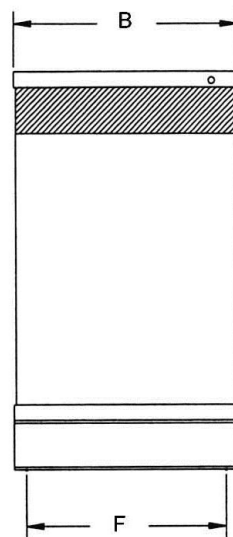
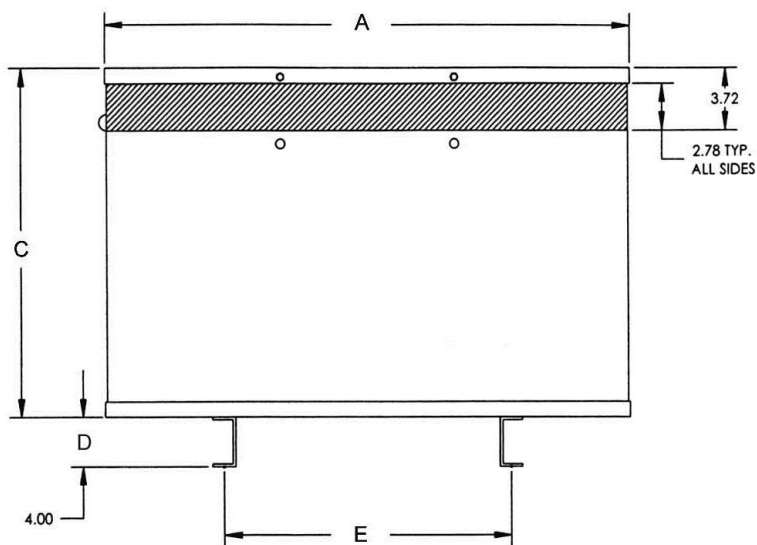


REVISIONS



Primary Volts	Connect Primary Lines To	Inter-Connect	Connect Secondary Lines To
480	H1, H2, H3	1	
456	H1, H2, H3	2	
432	H1, H2, H3	3	
Secondary Volts			
240			X1, X2, X3
120			X1, X4 or X2, X4

NOTES:
1. DENOTES CONDUIT AREA.

NOTES:
1. DENOTES CONDUIT AREAS.
2. TYPICAL, 4 - SIDES



KVA	CATALOG NUMBER	VOLTAGE		ENCLOSURE	WEIGHT (Approx.)	PHASE	FREQUENCY
		HIGH	LOW				
15	T3533411S	480Δ	240Δ/120	NEMA3R	245 Lbs	3φ	60Hz
Temp Rise:	115°C	TYPICAL PERFORMANCE DATA				Ambient Temp:	40°C
Insulation:	180°C	Impedance:		Windings:	AL	Rating:	NEMA ST-20
Standards:	UL/CSA					Construction:	Encapsulated
	A	B	C	D	E	F	
	20.30	9.03	14.86	4.00	13.25	7.00	

DATE: 3-Feb-16

TYPE NO: