

# CAST-IRON WORM GEARBOXES

---



## CHAPTER 2

### TABLE OF CONTENTS

|   |              |
|---|--------------|
| <i>IronHorse® Cast-Iron Worm Gearboxes. . . . .</i>                         | <i>.2-2</i>  |
| <i>Gearbox Selection Factors . . . . .</i>                                  | <i>.2-2</i>  |
| <i>Service Factors and K Factors. . . . .</i>                               | <i>2-2</i>   |
| <i>IronHorse® Cast-Iron Worm Gearbox Specifications. . . . .</i>            | <i>.2-3</i>  |
| <i>IronHorse® Cast-Iron Worm Gearbox Dimensions. . . . .</i>                | <i>.2-8</i>  |
| <i>Solid-Shaft Output Gearboxes WG-xxx-xxx-D/L/R . . . . .</i>              | <i>2-8</i>   |
| <i>Hollow-Bore Output Gearboxes WG-xxx-xxx-H. . . . .</i>                   | <i>2-9</i>   |
| <i>IronHorse® Cast-Iron Worm Gearbox Accessory Mounting Bases . . . . .</i> | <i>.2-10</i> |
| <i>Mounting Base Selection and Dimensions . . . . .</i>                     | <i>.2-10</i> |

## IRONHORSE® CAST-IRON WORM GEARBOXES



### GEARBOX SELECTION FACTORS

#### SERVICE FACTORS AND K FACTORS

| Service Factors for Selecting Gearboxes<br>(when used with electric motors)  |                      |                 |              |                |
|--|----------------------|-----------------|--------------|----------------|
| Service Continuity<br>(per day)  | Load Characteristics |                 |              |                |
|  | Uniform              | Moderate Shock* | Heavy Shock* | Extreme Shock* |
| Occasional 1/2 hour  | 1.00                 | 1.00            | 1.00         | 1.25           |
| Less than 3 hours  | 1.00                 | 1.00            | 1.25         | 1.50           |
| 3-10 hours   | 1.00                 | 1.25            | 1.50         | 1.75           |
| More than 10 hours   | 1.25                 | 1.50            | 1.75         | 2.00           |
| * Shock results from sudden increases in the torque demand of the load, such as: sudden stopping, restarting, and/or reversing; significantly heavy loads dropped onto a moving conveyor; impact loads such as punch press operations. |                      |                 |              |                |
| Depending upon the load characteristics, divide the gearbox HP, Overhung Load, and Maximum Mechanical Capacity ratings by the applicable service factor.   |                      |                 |              |                |

| Overhung Load K Factors for Various Drive Types             |      |
|---|------|
| Chain & Sprocket  | 1.00 |
| Gear  | 1.25 |
| V-belt  | 1.50 |
| Flat Belt   | 2.50 |
| Variable Pitch Belt   | 3.50 |
| Divide gearbox OHL ratings by the applicable OHL K factors. |      |

# IRONHORSE® CAST-IRON WORM GEARBOX SPECIFICATIONS

| IronHorse Cast-Iron Worm Gearbox Specifications   |               |              |                                |                                  |                  |               |                        |                      |                    |                |                    |                                     |                   |                       |                  |                   |                       |                           |                                  |  |  |  |  |
|---|---------------|--------------|--------------------------------|----------------------------------|------------------|---------------|------------------------|----------------------|--------------------|----------------|--------------------|-------------------------------------|-------------------|-----------------------|------------------|-------------------|-----------------------|---------------------------|----------------------------------|--|--|--|--|
| Part Number   | Nominal Ratio | Actual Ratio | Output RPM<br>@ 1750 rpm Input | Nominal Motor HP 1<br>@ 1800 rpm | NEMA Motor Frame | Output Type 2 | Center Distance 3 (in) | Overhung Load 4 (lb) | Thrust Load 5 (lb) | Efficiency (%) | Approx Weight (lb) | Maximum Ratings<br>@ 1750 rpm Input |                   |                       |                  |                   |                       | Maximum Input Speed (rpm) | Maximum Backlash<br>(arc-minute) |  |  |  |  |
|   |               |              |                                |                                  |                  |               |                        |                      |                    |                |                    | Mechanical 6                        |                   |                       | Thermal 7        |                   |                       |                           |                                  |  |  |  |  |
|   |               |              |                                |                                  |                  |               |                        |                      |                    |                |                    | Input Power (hp)                    | Output Power (hp) | Output Torque (lb-in) | Input Power (hp) | Output Power (hp) | Output Torque (lb-in) |                           |                                  |  |  |  |  |
| Gearbox Frame Size 175  |               |              |                                |                                  |                  |               |                        |                      |                    |                |                    |                                     |                   |                       |                  |                   |                       |                           |                                  |  |  |  |  |
| WG-175-005-D  | 5:1           | 5.25:1       | 350                            | 1-1/2                            | 56C              | D             | 1.75                   | 650                  | 550                | 93             | 23                 | 2.83                                | 2.62              | 499                   | 2.28             | 2.11              | 402                   | 2500                      | 20                               |  |  |  |  |
| WG-175-005-H  |               |              |                                |                                  |                  | 27            |                        |                      |                    |                |                    |                                     |                   |                       |                  |                   |                       |                           |                                  |  |  |  |  |
| WG-175-005-L  |               |              |                                |                                  |                  | 22            |                        |                      |                    |                |                    |                                     |                   |                       |                  |                   |                       |                           |                                  |  |  |  |  |
| WG-175-005-R  |               |              |                                |                                  |                  | 22            |                        |                      |                    |                |                    |                                     |                   |                       |                  |                   |                       |                           |                                  |  |  |  |  |
| WG-175-010-D  | 10:1          | 10.33:1      | 175                            | 1                                | 56C              | D             |                        |                      |                    | 88             | 23                 | 1.57                                | 1.38              | 515                   | 1.36             | 1.19              | 445                   |                           |                                  |  |  |  |  |
| WG-175-010-H  |               |              |                                |                                  |                  | 27            |                        |                      |                    |                |                    |                                     |                   |                       |                  |                   |                       |                           |                                  |  |  |  |  |
| WG-175-010-L  |               |              |                                |                                  |                  | 22            |                        |                      |                    |                |                    |                                     |                   |                       |                  |                   |                       |                           |                                  |  |  |  |  |
| WG-175-010-R  |               |              |                                |                                  |                  | 22            |                        |                      |                    |                |                    |                                     |                   |                       |                  |                   |                       |                           |                                  |  |  |  |  |
| WG-175-015-D  | 15:1          | 14.5:1       | 117                            | 3/4                              | 56C              | D             |                        |                      |                    | 85             | 23                 | 1.24                                | 1.06              | 554                   | 1.13             | 0.96              | 506                   |                           |                                  |  |  |  |  |
| WG-175-015-H  |               |              |                                |                                  |                  | 27            |                        |                      |                    |                |                    |                                     |                   |                       |                  |                   |                       |                           |                                  |  |  |  |  |
| WG-175-015-L  |               |              |                                |                                  |                  | 22            |                        |                      |                    |                |                    |                                     |                   |                       |                  |                   |                       |                           |                                  |  |  |  |  |
| WG-175-015-R  |               |              |                                |                                  |                  | 22            |                        |                      |                    |                |                    |                                     |                   |                       |                  |                   |                       |                           |                                  |  |  |  |  |
| WG-175-020-D  | 20:1          | 19.5:1       | 88                             | 3/4                              | 56C              | D             |                        |                      |                    | 83             | 23                 | 1.26                                | 1.04              | 737                   | 0.98             | 0.81              | 572                   |                           |                                  |  |  |  |  |
| WG-175-020-H  |               |              |                                |                                  |                  | 27            |                        |                      |                    |                |                    |                                     |                   |                       |                  |                   |                       |                           |                                  |  |  |  |  |
| WG-175-020-L  |               |              |                                |                                  |                  | 22            |                        |                      |                    |                |                    |                                     |                   |                       |                  |                   |                       |                           |                                  |  |  |  |  |
| WG-175-020-R  |               |              |                                |                                  |                  | 22            |                        |                      |                    |                |                    |                                     |                   |                       |                  |                   |                       |                           |                                  |  |  |  |  |
| WG-175-040-D  | 40:1          | 40:1         | 44                             | 1/3                              | 56C              | D             |                        |                      |                    | 62             | 23                 | 0.79                                | 0.49              | 714                   | 0.45             | 0.28              | 404                   |                           |                                  |  |  |  |  |
| WG-175-040-H  |               |              |                                |                                  |                  | 27            |                        |                      |                    |                |                    |                                     |                   |                       |                  |                   |                       |                           |                                  |  |  |  |  |
| WG-175-040-L  |               |              |                                |                                  |                  | 22            |                        |                      |                    |                |                    |                                     |                   |                       |                  |                   |                       |                           |                                  |  |  |  |  |
| WG-175-040-R  |               |              |                                |                                  |                  | 22            |                        |                      |                    |                |                    |                                     |                   |                       |                  |                   |                       |                           |                                  |  |  |  |  |
| WG-175-060-D  | 60:1          | 60:1         | 29                             | 1/4                              | 56C              | D             |                        |                      |                    | 52             | 23                 | 0.38                                | 0.20              | 433                   | 0.35             | 0.19              | 404                   |                           |                                  |  |  |  |  |
| WG-175-060-H  |               |              |                                |                                  |                  | 27            |                        |                      |                    |                |                    |                                     |                   |                       |                  |                   |                       |                           |                                  |  |  |  |  |
| WG-175-060-L  |               |              |                                |                                  |                  | 22            |                        |                      |                    |                |                    |                                     |                   |                       |                  |                   |                       |                           |                                  |  |  |  |  |
| WG-175-060-R  |               |              |                                |                                  |                  | 22            |                        |                      |                    |                |                    |                                     |                   |                       |                  |                   |                       |                           |                                  |  |  |  |  |
| <div>1) Nominal Motor HP is the highest HP 1800 rpm motor to be used with the gearbox under conditions of 1.0 service factor. Gearbox input power capacity decreases as motor speed decreases and as service factor increases.</div> <div>2) Output Type: D = Dual Shaft; H = Hollow Bore; L = Left-Hand Shaft; R = Right-Hand Shaft.</div> <div>3) Center Distance is the distance between the centerlines of the input and output shafts/bores; serves as the gearbox frame size.</div> <div>4) Overhung Load ratings are for forces perpendicular to the output shaft and located at the shaft midpoint, such as from a gear, pulley, or sprocket with a belt or chain. Divide OHL ratings by the applicable OHL K factors shown separately in the Selection Factors tables. OHL ratings should also be divided by applicable service factors.</div> <div>5) Thrust Load ratings are for forces along the axis of the output shaft, usually encountered in vertical-drive applications from agitators, mixers, fans, blowers, etc.</div> <div>6) Maximum Mechanical Ratings are limits based on strength and durability of gearbox components; applicable when operating time is short and stopped time is greater than or equal to operating time. These ratings are applicable for 1.0 service factor loads, and may require modification depending upon characteristics of the applicable driven loads. Refer to the "Service Factors" table for more information.</div> <div>7) Maximum Thermal Ratings are limits for gearbox continuous use without overheating.</div> |               |              |                                |                                  |                  |               |                        |                      |                    |                |                    |                                     |                   |                       |                  |                   |                       |                           |                                  |  |  |  |  |
| ( table continued next page )   |               |              |                                |                                  |                  |               |                        |                      |                    |                |                    |                                     |                   |                       |                  |                   |                       |                           |                                  |  |  |  |  |

| IronHorse Cast-Iron Worm Gearbox Specifications – (continued from previous page) |               |              |                                |                                  |                  |               |                        |                      |                    |                |                    |                                     |                      |                          |                     |                      |                          |                              |                                  |
|--|---------------|--------------|--------------------------------|----------------------------------|------------------|---------------|------------------------|----------------------|--------------------|----------------|--------------------|-------------------------------------|----------------------|--------------------------|---------------------|----------------------|--------------------------|------------------------------|----------------------------------|
| Part Number  | Nominal Ratio | Actual Ratio | Output RPM<br>@ 1750 rpm Input | Nominal Motor HP 1<br>@ 1800 rpm | NEMA Motor Frame | Output Type 2 | Center Distance 3 (in) | Overhung Load 4 (lb) | Thrust Load 5 (lb) | Efficiency (%) | Approx Weight (lb) | Maximum Ratings<br>@ 1750 rpm Input |                      |                          |                     |                      |                          | Maximum Input Speed<br>(rpm) | Maximum Backlash<br>(arc-minute) |
|  |               |              |                                |                                  |                  |               |                        |                      |                    |                |                    | Mechanical 6                        |                      |                          | Thermal 7           |                      |                          |                              |                                  |
|  |               |              |                                |                                  |                  |               |                        |                      |                    |                |                    | Input Power<br>(hp)                 | Output Power<br>(hp) | Output Torque<br>(lb-in) | Input Power<br>(hp) | Output Power<br>(hp) | Output Torque<br>(lb-in) |                              |                                  |
| Gearbox Frame Size 206   |               |              |                                |                                  |                  |               |                        |                      |                    |                |                    |                                     |                      |                          |                     |                      |                          |                              |                                  |
| WG-206-005-D   | 5:1           | 5.75:1       | 350                            | 2                                | 56C              | D             | 2.06                   | 700                  | 750                | 92             | 28                 | 3.62                                | 3.33                 | 925                      | 2.57                | 2.36                 | 657                      | 2500                         | 21                               |
| WG-206-005-H   |               |              |                                |                                  |                  | H             |                        |                      |                    |                | 28                 |                                     |                      |                          |                     |                      |                          |                              |                                  |
| WG-206-005-L   |               |              |                                |                                  |                  | L             |                        |                      |                    |                | 27                 |                                     |                      |                          |                     |                      |                          |                              |                                  |
| WG-206-005-R   |               |              |                                |                                  |                  | R             |                        |                      |                    |                | 27                 |                                     |                      |                          |                     |                      |                          |                              |                                  |
| WG-206-010-D   | 10:1          | 10.33:1      | 175                            | 1-1/2                            | 56C              | D             |                        |                      |                    | 90             | 28                 | 2.77                                | 2.50                 | 935                      | 2.10                | 1.89                 | 708                      |                              |                                  |
| WG-206-010-H   |               |              |                                |                                  |                  | H             |                        |                      |                    |                | 28                 |                                     |                      |                          |                     |                      |                          |                              |                                  |
| WG-206-010-L   |               |              |                                |                                  |                  | L             |                        |                      |                    |                | 27                 |                                     |                      |                          |                     |                      |                          |                              |                                  |
| WG-206-010-R   |               |              |                                |                                  |                  | R             |                        |                      |                    |                | 27                 |                                     |                      |                          |                     |                      |                          |                              |                                  |
| WG-206-015-D   | 15:1          | 15.5:1       | 117                            | 1                                | 56C              | D             |                        |                      |                    | 85             | 28                 | 2.09                                | 1.78                 | 1002                     | 1.40                | 1.20                 | 673                      |                              |                                  |
| WG-206-015-H   |               |              |                                |                                  |                  | H             |                        |                      |                    |                | 28                 |                                     |                      |                          |                     |                      |                          |                              |                                  |
| WG-206-015-L   |               |              |                                |                                  |                  | L             |                        |                      |                    |                | 27                 |                                     |                      |                          |                     |                      |                          |                              |                                  |
| WG-206-015-R   |               |              |                                |                                  |                  | R             |                        |                      |                    |                | 27                 |                                     |                      |                          |                     |                      |                          |                              |                                  |
| WG-206-020-D   | 20:1          | 19.5:1       | 88                             | 1                                | 56C              | D             |                        |                      |                    | 82             | 28                 | 1.57                                | 1.29                 | 914                      | 1.17                | 0.96                 | 681                      |                              |                                  |
| WG-206-020-H   |               |              |                                |                                  |                  | H             |                        |                      |                    |                | 28                 |                                     |                      |                          |                     |                      |                          |                              |                                  |
| WG-206-020-L   |               |              |                                |                                  |                  | L             |                        |                      |                    |                | 27                 |                                     |                      |                          |                     |                      |                          |                              |                                  |
| WG-206-020-R   |               |              |                                |                                  |                  | R             |                        |                      |                    |                | 27                 |                                     |                      |                          |                     |                      |                          |                              |                                  |
| WG-206-040-D   | 40:1          | 40:1         | 44                             | 1/2                              | 56C              | D             |                        |                      |                    | 71             | 28                 | 1.09                                | 0.77                 | 1120                     | 0.71                | 0.50                 | 726                      |                              |                                  |
| WG-206-040-H   |               |              |                                |                                  |                  | H             |                        |                      |                    |                | 28                 |                                     |                      |                          |                     |                      |                          |                              |                                  |
| WG-206-040-L   |               |              |                                |                                  |                  | L             |                        |                      |                    |                | 27                 |                                     |                      |                          |                     |                      |                          |                              |                                  |
| WG-206-040-R   |               |              |                                |                                  |                  | R             |                        |                      |                    |                | 27                 |                                     |                      |                          |                     |                      |                          |                              |                                  |
| WG-206-060-D   | 60:1          | 60:1         | 29                             | 1/3                              | 56C              | D             |                        |                      |                    | 58             | 28                 | 0.60                                | 0.35                 | 750                      | 0.48                | 0.28                 | 606                      |                              |                                  |
| WG-206-060-H   |               |              |                                |                                  |                  | H             |                        |                      |                    |                | 28                 |                                     |                      |                          |                     |                      |                          |                              |                                  |
| WG-206-060-L   |               |              |                                |                                  |                  | L             |                        |                      |                    |                | 27                 |                                     |                      |                          |                     |                      |                          |                              |                                  |
| WG-206-060-R   |               |              |                                |                                  |                  | R             |                        |                      |                    |                | 27                 |                                     |                      |                          |                     |                      |                          |                              |                                  |

1) Nominal Motor HP is the highest HP 1800 rpm motor to be used with the gearbox under conditions of 1.0 service factor. Gearbox input power capacity decreases as motor speed decreases and as service factor increases.

2) Output Type: D = Dual Shaft; H = Hollow Bore; L = Left-Hand Shaft; R = Right-Hand Shaft.

3) Center Distance is the distance between the centerlines of the input and output shafts/bores; serves as the gearbox frame size.

4) Overhung Load ratings are for forces perpendicular to the output shaft and located at the shaft midpoint, such as from a gear, pulley, or sprocket with a belt or chain. Divide OHL ratings by the applicable OHL K factors shown separately in the Selection Factors tables. OHL ratings should also be divided by applicable service factors.

5) Thrust Load ratings are for forces along the axis of the output shaft, usually encountered in vertical-drive applications from agitators, mixers, fans, blowers, etc.

6) Maximum Mechanical Ratings are limits based on strength and durability of gearbox components; applicable when operating time is short and stopped time is greater than or equal to operating time. These ratings are applicable for 1.0 service factor loads, and may require modification depending upon characteristics of the applicable driven loads. Refer to the "Service Factors" table for more information.

7) Maximum Thermal Ratings are limits for gearbox continuous use without overheating.

( table continued next page )

| IronHorse Cast-Iron Worm Gearbox Specifications – (continued from previous page)  |               |              |                             |                               |                  |               |                        |                      |                    |                |                    |                                  |                   |                       |                  |                   |                       |                           |                               |
|---|---------------|--------------|-----------------------------|-------------------------------|------------------|---------------|------------------------|----------------------|--------------------|----------------|--------------------|----------------------------------|-------------------|-----------------------|------------------|-------------------|-----------------------|---------------------------|-------------------------------|
| Part Number   | Nominal Ratio | Actual Ratio | Output RPM @ 1750 rpm Input | Nominal Motor HP 1 @ 1800 rpm | NEMA Motor Frame | Output Type 2 | Center Distance 3 (in) | Overhung Load 4 (lb) | Thrust Load 5 (lb) | Efficiency (%) | Approx Weight (lb) | Maximum Ratings @ 1750 rpm Input |                   |                       |                  |                   |                       | Maximum Input Speed (rpm) | Maximum Backlash (arc-minute) |
|   |               |              |                             |                               |                  |               |                        |                      |                    |                |                    | Mechanical 6                     |                   |                       | Thermal 7        |                   |                       |                           |                               |
|   |               |              |                             |                               |                  |               |                        |                      |                    |                |                    | Input Power (hp)                 | Output Power (hp) | Output Torque (lb-in) | Input Power (hp) | Output Power (hp) | Output Torque (lb-in) |                           |                               |
| Gearbox Frame Size 237  |               |              |                             |                               |                  |               |                        |                      |                    |                |                    |                                  |                   |                       |                  |                   |                       |                           |                               |
| WG-237-005-D  | 5:1           | 5.25:1       | 350                         | 3                             | 56C              | D             | 2.37                   | 900                  | 900                | 93             | 38                 | 4.32                             | 4.02              | 766                   | 3.56             | 3.31              | 630                   | 2500                      | 17                            |
| WG-237-005-H  |               |              |                             |                               |                  | H             |                        |                      |                    |                | 36                 |                                  |                   |                       |                  |                   |                       |                           |                               |
| WG-237-005-L  |               |              |                             |                               |                  | L             |                        |                      |                    |                | 37                 |                                  |                   |                       |                  |                   |                       |                           |                               |
| WG-237-005-R  |               |              |                             |                               |                  | R             |                        |                      |                    |                | 37                 |                                  |                   |                       |                  |                   |                       |                           |                               |
| WG-237-010-D  | 10:1          | 10.33:1      | 175                         | 1-1/2                         |                  | D             |                        |                      |                    | 89             | 38                 | 3.47                             | 3.09              | 1158                  | 2.24             | 1.99              | 746                   |                           |                               |
| WG-237-010-H  |               |              |                             |                               |                  | H             |                        |                      |                    |                | 36                 |                                  |                   |                       |                  |                   |                       |                           |                               |
| WG-237-010-L  |               |              |                             |                               |                  | L             |                        |                      |                    |                | 37                 |                                  |                   |                       |                  |                   |                       |                           |                               |
| WG-237-010-R  |               |              |                             |                               |                  | R             |                        |                      |                    |                | 37                 |                                  |                   |                       |                  |                   |                       |                           |                               |
| WG-237-015-D  | 15:1          | 15.5:1       | 117                         | 1                             |                  | D             |                        |                      |                    | 84             | 38                 | 2.64                             | 2.22              | 1249                  | 1.55             | 1.30              | 732                   |                           |                               |
| WG-237-015-H  |               |              |                             |                               |                  | H             |                        |                      |                    |                | 36                 |                                  |                   |                       |                  |                   |                       |                           |                               |
| WG-237-015-L  |               |              |                             |                               |                  | L             |                        |                      |                    |                | 37                 |                                  |                   |                       |                  |                   |                       |                           |                               |
| WG-237-015-R  |               |              |                             |                               |                  | R             |                        |                      |                    |                | 37                 |                                  |                   |                       |                  |                   |                       |                           |                               |
| WG-237-020-D  | 20:1          | 20:1         | 88                          | 1                             |                  | D             |                        |                      |                    | 82             | 38                 | 2.06                             | 1.69              | 1195                  | 1.36             | 1.12              | 791                   |                           |                               |
| WG-237-020-H  |               |              |                             |                               |                  | H             |                        |                      |                    |                | 36                 |                                  |                   |                       |                  |                   |                       |                           |                               |
| WG-237-020-L  |               |              |                             |                               |                  | L             |                        |                      |                    |                | 37                 |                                  |                   |                       |                  |                   |                       |                           |                               |
| WG-237-020-R  |               |              |                             |                               |                  | R             |                        |                      |                    |                | 37                 |                                  |                   |                       |                  |                   |                       |                           |                               |
| WG-237-040-D  | 40:1          | 40:1         | 44                          | 1/2                           |                  | D             |                        |                      |                    | 71             | 38                 | 1.45                             | 1.02              | 1483                  | 0.83             | 0.58              | 845                   |                           |                               |
| WG-237-040-H  |               |              |                             |                               |                  | H             |                        |                      |                    |                | 36                 |                                  |                   |                       |                  |                   |                       |                           |                               |
| WG-237-040-L  |               |              |                             |                               |                  | L             |                        |                      |                    |                | 37                 |                                  |                   |                       |                  |                   |                       |                           |                               |
| WG-237-040-R  |               |              |                             |                               |                  | R             |                        |                      |                    |                | 37                 |                                  |                   |                       |                  |                   |                       |                           |                               |
| WG-237-060-D  | 60:1          | 60:1         | 29                          | 1/2                           |                  | D             |                        |                      |                    | 61             | 38                 | 0.86                             | 0.53              | 1149                  | 0.63             | 0.39              | 844                   |                           |                               |
| WG-237-060-H  |               |              |                             |                               |                  | H             |                        |                      |                    |                | 36                 |                                  |                   |                       |                  |                   |                       |                           |                               |
| WG-237-060-L  |               |              |                             |                               |                  | L             |                        |                      |                    |                | 37                 |                                  |                   |                       |                  |                   |                       |                           |                               |
| WG-237-060-R  |               |              |                             |                               |                  | R             |                        |                      |                    |                | 37                 |                                  |                   |                       |                  |                   |                       |                           |                               |
| 1) Nominal Motor HP is the highest HP 1800 rpm motor to be used with the gearbox under conditions of 1.0 service factor. Gearbox input power capacity decreases as motor speed decreases and as service factor increases.   |               |              |                             |                               |                  |               |                        |                      |                    |                |                    |                                  |                   |                       |                  |                   |                       |                           |                               |
| 2) Output Type: D = Dual Shaft; H = Hollow Bore; L = Left-Hand Shaft; R = Right-Hand Shaft.   |               |              |                             |                               |                  |               |                        |                      |                    |                |                    |                                  |                   |                       |                  |                   |                       |                           |                               |
| 3) Center Distance is the distance between the centerlines of the input and output shafts/bores; serves as the gearbox frame size.  |               |              |                             |                               |                  |               |                        |                      |                    |                |                    |                                  |                   |                       |                  |                   |                       |                           |                               |
| 4) Overhung Load ratings are for forces perpendicular to the output shaft and located at the shaft midpoint, such as from a gear, pulley, or sprocket with a belt or chain. Divide OHL ratings by the applicable OHL K factors shown separately in the Selection Factors tables. OHL ratings should also be divided by applicable service factors.  |               |              |                             |                               |                  |               |                        |                      |                    |                |                    |                                  |                   |                       |                  |                   |                       |                           |                               |
| 5) Thrust Load ratings are for forces along the axis of the output shaft, usually encountered in vertical-drive applications from agitators, mixers, fans, blowers, etc.  |               |              |                             |                               |                  |               |                        |                      |                    |                |                    |                                  |                   |                       |                  |                   |                       |                           |                               |
| 6) Maximum Mechanical Ratings are limits based on strength and durability of gearbox components; applicable when operating time is short and stopped time is greater than or equal to operating time. These ratings are applicable for 1.0 service factor loads, and may require modification depending upon characteristics of the applicable driven loads. Refer to the "Service Factors" table for more information. |               |              |                             |                               |                  |               |                        |                      |                    |                |                    |                                  |                   |                       |                  |                   |                       |                           |                               |
| 7) Maximum Thermal Ratings are limits for gearbox continuous use without overheating.   |               |              |                             |                               |                  |               |                        |                      |                    |                |                    |                                  |                   |                       |                  |                   |                       |                           |                               |
| ( table continued next page )   |               |              |                             |                               |                  |               |                        |                      |                    |                |                    |                                  |                   |                       |                  |                   |                       |                           |                               |

| IronHorse Cast-Iron Worm Gearbox Specifications – (continued from previous page) |               |              |                                |                                  |                  |               |                        |                      |                    |                |                    |                                     |                      |                          |                     |                      |                          |                              |                                  |
|--|---------------|--------------|--------------------------------|----------------------------------|------------------|---------------|------------------------|----------------------|--------------------|----------------|--------------------|-------------------------------------|----------------------|--------------------------|---------------------|----------------------|--------------------------|------------------------------|----------------------------------|
| Part Number  | Nominal Ratio | Actual Ratio | Output RPM<br>@ 1750 rpm Input | Nominal Motor HP 1<br>@ 1800 rpm | NEMA Motor Frame | Output Type 2 | Center Distance 3 (in) | Overhung Load 4 (lb) | Thrust Load 5 (lb) | Efficiency (%) | Approx Weight (lb) | Maximum Ratings<br>@ 1750 rpm Input |                      |                          |                     |                      |                          | Maximum Input Speed<br>(rpm) | Maximum Backlash<br>(arc-minute) |
|  |               |              |                                |                                  |                  |               |                        |                      |                    |                |                    | Mechanical 6                        |                      |                          | Thermal 7           |                      |                          |                              |                                  |
|  |               |              |                                |                                  |                  |               |                        |                      |                    |                |                    | Input Power<br>(hp)                 | Output Power<br>(hp) | Output Torque<br>(lb-in) | Input Power<br>(hp) | Output Power<br>(hp) | Output Torque<br>(lb-in) |                              |                                  |
| Gearbox Frame Size 262   |               |              |                                |                                  |                  |               |                        |                      |                    |                |                    |                                     |                      |                          |                     |                      |                          |                              |                                  |
| WG-262-005-D   | 5:1           | 5.25:1       | 350                            | 3                                | 182TC            | D             | 2.62                   | 1000                 | 1000               | 93             | 57                 | 5.24                                | 4.86                 | 924                      | 4.32                | 4.00                 | 761                      | 2500                         | 17                               |
| WG-262-005-H   |               |              |                                |                                  |                  | H             |                        |                      |                    |                | 58                 |                                     |                      |                          |                     |                      |                          |                              |                                  |
| WG-262-005-L   |               |              |                                |                                  |                  | L             |                        |                      |                    |                | 56                 |                                     |                      |                          |                     |                      |                          |                              |                                  |
| WG-262-005-R   |               |              |                                |                                  |                  | R             |                        |                      |                    |                | 56                 |                                     |                      |                          |                     |                      |                          |                              |                                  |
| WG-262-010-D   | 10:1          | 10.67:1      | 175                            | 2                                |                  | D             |                        |                      |                    | 90             | 57                 | 4.17                                | 3.74                 | 1445                     | 3.06                | 2.75                 | 1061                     |                              |                                  |
| WG-262-010-H   |               |              |                                |                                  |                  | H             |                        |                      |                    |                | 57                 |                                     |                      |                          |                     |                      |                          |                              |                                  |
| WG-262-010-L   |               |              |                                |                                  |                  | L             |                        |                      |                    |                | 56                 |                                     |                      |                          |                     |                      |                          |                              |                                  |
| WG-262-010-R   |               |              |                                |                                  |                  | R             |                        |                      |                    |                | 56                 |                                     |                      |                          |                     |                      |                          |                              |                                  |
| WG-262-015-D   | 15:1          | 15.5:1       | 117                            | 2                                | D                | 87            |                        |                      |                    | 50             | 3.22               | 2.81                                | 1577                 | 2.47                     | 2.16                | 1212                 |                          |                              |                                  |
| WG-262-015-H   |               |              |                                |                                  | H                |               |                        |                      |                    | 50             |                    |                                     |                      |                          |                     |                      |                          |                              |                                  |
| WG-262-015-L   |               |              |                                |                                  | L                |               |                        |                      |                    | 49             |                    |                                     |                      |                          |                     |                      |                          |                              |                                  |
| WG-262-015-R   |               |              |                                |                                  | R                |               |                        |                      |                    | 49             |                    |                                     |                      |                          |                     |                      |                          |                              |                                  |
| WG-262-020-D   | 20:1          | 19.5:1       | 88                             | 1-1/2                            | D                | 83            |                        |                      |                    | 50             | 2.67               | 2.21                                | 1563                 | 1.84                     | 1.53                | 1078                 |                          |                              |                                  |
| WG-262-020-H   |               |              |                                |                                  | H                |               |                        |                      |                    | 50             |                    |                                     |                      |                          |                     |                      |                          |                              |                                  |
| WG-262-020-L   |               |              |                                |                                  | L                |               |                        |                      |                    | 49             |                    |                                     |                      |                          |                     |                      |                          |                              |                                  |
| WG-262-020-R   |               |              |                                |                                  | R                |               |                        |                      |                    | 49             |                    |                                     |                      |                          |                     |                      |                          |                              |                                  |
| WG-262-040-D   | 40:1          | 40:1         | 44                             | 3/4                              | D                | 72            |                        |                      |                    | 50             | 1.85               | 1.32                                | 1919                 | 1.11                     | 0.80                | 1153                 |                          |                              |                                  |
| WG-262-040-H   |               |              |                                |                                  | H                |               |                        |                      |                    | 50             |                    |                                     |                      |                          |                     |                      |                          |                              |                                  |
| WG-262-040-L   |               |              |                                |                                  | L                |               |                        |                      |                    | 49             |                    |                                     |                      |                          |                     |                      |                          |                              |                                  |
| WG-262-040-R   |               |              |                                |                                  | R                |               |                        |                      |                    | 49             |                    |                                     |                      |                          |                     |                      |                          |                              |                                  |
| WG-262-060-D   | 60:1          | 60:1         | 29                             | 3/4                              | D                | 66            |                        |                      |                    | 50             | 1.16               | 0.77                                | 1670                 | 0.94                     | 0.62                | 1346                 |                          |                              |                                  |
| WG-262-060-H   |               |              |                                |                                  | H                |               |                        |                      |                    | 51             |                    |                                     |                      |                          |                     |                      |                          |                              |                                  |
| WG-262-060-L   |               |              |                                |                                  | L                |               |                        |                      |                    | 49             |                    |                                     |                      |                          |                     |                      |                          |                              |                                  |
| WG-262-060-R   |               |              |                                |                                  | R                |               |                        |                      |                    | 49             |                    |                                     |                      |                          |                     |                      |                          |                              |                                  |

1) Nominal Motor HP is the highest HP 1800 rpm motor to be used with the gearbox under conditions of 1.0 service factor. Gearbox input power capacity decreases as motor speed decreases and as service factor increases.

2) Output Type: D = Dual Shaft; H = Hollow Bore; L = Left-Hand Shaft; R = Right-Hand Shaft.

3) Center Distance is the distance between the centerlines of the input and output shafts/bores; serves as the gearbox frame size.

4) Overhung Load ratings are for forces perpendicular to the output shaft and located at the shaft midpoint, such as from a gear, pulley, or sprocket with a belt or chain. Divide OHL ratings by the applicable OHL K factors shown separately in the Selection Factors tables. OHL ratings should also be divided by applicable service factors.

5) Thrust Load ratings are for forces along the axis of the output shaft, usually encountered in vertical-drive applications from agitators, mixers, fans, blowers, etc.

6) Maximum Mechanical Ratings are limits based on strength and durability of gearbox components; applicable when operating time is short and stopped time is greater than or equal to operating time. These ratings are applicable for 1.0 service factor loads, and may require modification depending upon characteristics of the applicable driven loads. Refer to the “Service Factors” table for more information.

7) Maximum Thermal Ratings are limits for gearbox continuous use without overheating.

( table continued next page )

| IronHorse Cast-Iron Worm Gearbox Specifications – (continued from previous page) |               |              |                             |                               |                  |               |                        |                      |                    |                |                    |                                  |                   |                       |                  |                   |                       |                           |                               |      |       |   |    |    |      |      |      |      |      |      |
|--|---------------|--------------|-----------------------------|-------------------------------|------------------|---------------|------------------------|----------------------|--------------------|----------------|--------------------|----------------------------------|-------------------|-----------------------|------------------|-------------------|-----------------------|---------------------------|-------------------------------|------|-------|---|----|----|------|------|------|------|------|------|
| Part Number  | Nominal Ratio | Actual Ratio | Output RPM @ 1750 rpm Input | Nominal Motor HP 1 @ 1800 rpm | NEMA Motor Frame | Output Type 2 | Center Distance 3 (in) | Overhung Load 4 (lb) | Thrust Load 5 (lb) | Efficiency (%) | Approx Weight (lb) | Maximum Ratings @ 1750 rpm Input |                   |                       |                  |                   |                       | Maximum Input Speed (rpm) | Maximum Backlash (arc-minute) |      |       |   |    |    |      |      |      |      |      |      |
|  |               |              |                             |                               |                  |               |                        |                      |                    |                |                    | Mechanical 6                     |                   |                       | Thermal 7        |                   |                       |                           |                               |      |       |   |    |    |      |      |      |      |      |      |
|  |               |              |                             |                               |                  |               |                        |                      |                    |                |                    | Input Power (hp)                 | Output Power (hp) | Output Torque (lb-in) | Input Power (hp) | Output Power (hp) | Output Torque (lb-in) |                           |                               |      |       |   |    |    |      |      |      |      |      |      |
| Gearbox Frame Size 325   |               |              |                             |                               |                  |               |                        |                      |                    |                |                    |                                  |                   |                       |                  |                   |                       |                           |                               |      |       |   |    |    |      |      |      |      |      |      |
| WG-325-010-DC  | 10:1          | 10.33:1      | 175                         | 3                             | 182/4TC          | D             | 3.25                   | 1200                 | 1100               | 90             | 91                 | 7.19                             | 6.46              | 2419                  | 4.63             | 4.16              | 1558                  | 2500                      | 15                            |      |       |   |    |    |      |      |      |      |      |      |
| WG-325-010-HC  |               |              |                             |                               |                  | H             |                        |                      |                    |                | 90                 |                                  |                   |                       |                  |                   |                       |                           |                               |      |       |   |    |    |      |      |      |      |      |      |
| WG-325-010-LC  |               |              |                             |                               |                  | L             |                        |                      |                    |                | 90                 |                                  |                   |                       |                  |                   |                       |                           |                               |      |       |   |    |    |      |      |      |      |      |      |
| WG-325-010-RC  |               |              |                             |                               |                  | R             |                        |                      |                    |                | 90                 |                                  |                   |                       |                  |                   |                       |                           |                               |      |       |   |    |    |      |      |      |      |      |      |
| WG-325-015-DC  | 15:1          | 15.5:1       | 117                         | 5                             | 182/4TC          | D             |                        |                      |                    | 85             | 91                 | 5.45                             | 4.65              | 2611                  | 3.19             | 2.72              | 1527                  |                           |                               |      |       |   |    |    |      |      |      |      |      |      |
| WG-325-015-HC  |               |              |                             |                               |                  | H             |                        |                      |                    |                | 90                 |                                  |                   |                       |                  |                   |                       |                           |                               |      |       |   |    |    |      |      |      |      |      |      |
| WG-325-015-LC  |               |              |                             |                               |                  | L             |                        |                      |                    |                | 90                 |                                  |                   |                       |                  |                   |                       |                           |                               |      |       |   |    |    |      |      |      |      |      |      |
| WG-325-015-RC  |               |              |                             |                               |                  | R             |                        |                      |                    |                | 90                 |                                  |                   |                       |                  |                   |                       |                           |                               |      |       |   |    |    |      |      |      |      |      |      |
| WG-325-020-DC  | 20:1          | 19.5:1       | 88                          | 3                             | 182TC            | D             |                        |                      |                    | 86             | 91                 | 4.74                             | 4.07              | 2875                  | 3.31             | 2.85              | 2011                  |                           |                               |      |       |   |    |    |      |      |      |      |      |      |
| WG-325-020-HC  |               |              |                             |                               |                  | H             |                        |                      |                    |                | 90                 |                                  |                   |                       |                  |                   |                       |                           |                               |      |       |   |    |    |      |      |      |      |      |      |
| WG-325-020-LC  |               |              |                             |                               |                  | L             |                        |                      |                    |                | 90                 |                                  |                   |                       |                  |                   |                       |                           |                               |      |       |   |    |    |      |      |      |      |      |      |
| WG-325-020-RC  |               |              |                             |                               |                  | R             |                        |                      |                    |                | 90                 |                                  |                   |                       |                  |                   |                       |                           |                               |      |       |   |    |    |      |      |      |      |      |      |
| WG-325-030-DA  | 30:1          | 30:1         | 58                          | 2                             | 56C              | D             |                        |                      |                    | 77             | 88                 | 3.66                             | 2.80              | 3045                  | 2.00             | 1.53              | 1661                  |                           |                               |      |       |   |    |    |      |      |      |      |      |      |
| WG-325-030-DB  |               |              |                             |                               | 145TC            | D             |                        |                      |                    |                | 88                 |                                  |                   |                       |                  |                   |                       |                           |                               |      |       |   |    |    |      |      |      |      |      |      |
| WG-325-030-HA  |               |              |                             |                               | 56C              | H             |                        |                      |                    |                | 87                 |                                  |                   |                       |                  |                   |                       |                           |                               |      |       |   |    |    |      |      |      |      |      |      |
| WG-325-030-HB  |               |              |                             |                               | 145TC            | H             |                        |                      |                    |                | 87                 |                                  |                   |                       |                  |                   |                       |                           |                               |      |       |   |    |    |      |      |      |      |      |      |
| WG-325-030-LA  |               |              |                             |                               | 56C              | L             |                        |                      |                    |                | 87                 |                                  |                   |                       |                  |                   |                       |                           |                               |      |       |   |    |    |      |      |      |      |      |      |
| WG-325-030-LB  |               |              |                             |                               | 145TC            | L             |                        |                      |                    |                | 87                 |                                  |                   |                       |                  |                   |                       |                           |                               |      |       |   |    |    |      |      |      |      |      |      |
| WG-325-030-LC  |               |              |                             | 3                             | 182TC            | L             |                        |                      |                    |                | 87                 |                                  |                   |                       |                  |                   |                       |                           |                               |      |       |   |    |    |      |      |      |      |      |      |
| WG-325-030-RA  |               |              |                             | 2                             | 56C              | R             |                        |                      |                    |                | 87                 |                                  |                   |                       |                  |                   |                       |                           |                               |      |       |   |    |    |      |      |      |      |      |      |
| WG-325-030-RB  |               |              |                             |                               | 145TC            | R             |                        |                      |                    |                | 87                 |                                  |                   |                       |                  |                   |                       |                           |                               |      |       |   |    |    |      |      |      |      |      |      |
| WG-325-030-RC  |               |              |                             |                               | 182TC            | R             |                        |                      |                    |                | 87                 |                                  |                   |                       |                  |                   |                       |                           |                               |      |       |   |    |    |      |      |      |      |      |      |
| WG-325-040-DA  | 40:1          | 40:1         | 44                          |                               | 1.5              | 56C           |                        |                      |                    | D              | 76                 | 88                               | 3.35              | 2.55                  | 3692             | 1.96              | 1.49                  |                           |                               | 2156 |       |   |    |    |      |      |      |      |      |      |
| WG-325-040-DB  |               |              |                             | 145TC                         |                  | D             |                        |                      |                    | 88             |                    |                                  |                   |                       |                  |                   |                       |                           |                               |      |       |   |    |    |      |      |      |      |      |      |
| WG-325-040-HA  |               |              |                             | 56C                           |                  | H             |                        |                      |                    | 87             |                    |                                  |                   |                       |                  |                   |                       |                           |                               |      |       |   |    |    |      |      |      |      |      |      |
| WG-325-040-HB  |               |              |                             | 145TC                         |                  | H             |                        |                      |                    | 87             |                    |                                  |                   |                       |                  |                   |                       |                           |                               |      |       |   |    |    |      |      |      |      |      |      |
| WG-325-040-LA  |               |              |                             | 56C                           |                  | L             |                        |                      |                    | 87             |                    |                                  |                   |                       |                  |                   |                       |                           |                               |      |       |   |    |    |      |      |      |      |      |      |
| WG-325-040-LB  |               |              |                             | 145TC                         |                  | L             |                        |                      |                    | 87             |                    |                                  |                   |                       |                  |                   |                       |                           |                               |      |       |   |    |    |      |      |      |      |      |      |
| WG-325-040-RA  |               |              |                             | 56C                           |                  | R             |                        |                      |                    | 87             |                    |                                  |                   |                       |                  |                   |                       |                           |                               |      |       |   |    |    |      |      |      |      |      |      |
| WG-325-040-RB  |               |              |                             | 145TC                         |                  | R             |                        |                      |                    | 87             |                    |                                  |                   |                       |                  |                   |                       |                           |                               |      |       |   |    |    |      |      |      |      |      |      |
| WG-325-060-DA  |               |              |                             | 60:1                          |                  | 60:1          |                        |                      |                    | 29             |                    | 1.5                              |                   |                       |                  |                   |                       |                           |                               |      | 56C   | D | 71 | 88 | 2.03 | 1.44 | 3127 | 1.61 | 1.14 | 2476 |
| WG-325-060-DB  |               |              |                             |                               |                  |               |                        |                      |                    |                |                    |                                  |                   |                       |                  |                   |                       |                           |                               |      | 145TC | D |    | 88 |      |      |      |      |      |      |
| WG-325-060-HA  | 56C           | H            | 87                          |                               |                  |               |                        |                      |                    |                |                    |                                  |                   |                       |                  |                   |                       |                           |                               |      |       |   |    |    |      |      |      |      |      |      |
| WG-325-060-HB  | 145TC         | H            | 87                          |                               |                  |               |                        |                      |                    |                |                    |                                  |                   |                       |                  |                   |                       |                           |                               |      |       |   |    |    |      |      |      |      |      |      |
| WG-325-060-LA  | 56C           | L            | 87                          |                               |                  |               |                        |                      |                    |                |                    |                                  |                   |                       |                  |                   |                       |                           |                               |      |       |   |    |    |      |      |      |      |      |      |
| WG-325-060-LB  | 145TC         | L            | 87                          |                               |                  |               |                        |                      |                    |                |                    |                                  |                   |                       |                  |                   |                       |                           |                               |      |       |   |    |    |      |      |      |      |      |      |
| WG-325-060-RA  | 56C           | R            | 87                          |                               |                  |               |                        |                      |                    |                |                    |                                  |                   |                       |                  |                   |                       |                           |                               |      |       |   |    |    |      |      |      |      |      |      |
| WG-325-060-RB  | 145TC         | R            | 87                          |                               |                  |               |                        |                      |                    |                |                    |                                  |                   |                       |                  |                   |                       |                           |                               |      |       |   |    |    |      |      |      |      |      |      |

1) Nominal Motor HP is the highest HP 1800 rpm motor to be used with the gearbox under conditions of 1.0 service factor. Gearbox input power capacity decreases as motor speed decreases and as service factor increases.

2) Output Type: D = Dual Shaft; H = Hollow Bore; L = Left-Hand Shaft; R = Right-Hand Shaft.

3) Center Distance is the distance between the centerlines of the input and output shafts/bores; serves as the gearbox frame size.

4) Overhung Load ratings are for forces perpendicular to the output shaft and located at the shaft midpoint, such as from a gear, pulley, or sprocket with a belt or chain. Divide OHL ratings by the applicable OHL K factors shown separately in the Selection Factors tables. OHL ratings should also be divided by applicable service factors.

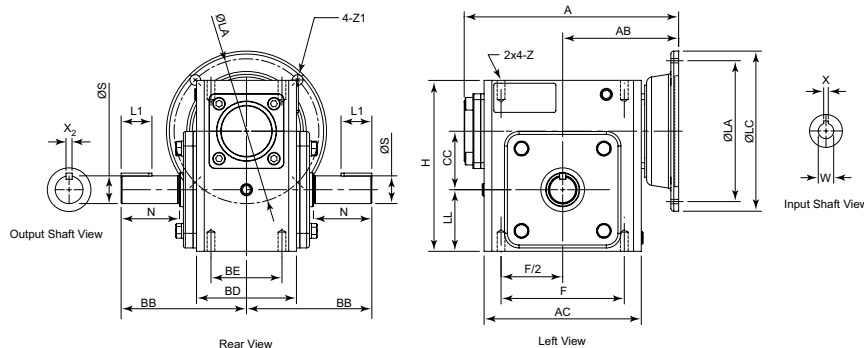
5) Thrust Load ratings are for forces along the axis of the output shaft, usually encountered in vertical-drive applications from agitators, mixers, fans, blowers, etc.

6) Maximum Mechanical Ratings are limits based on strength and durability of gearbox components; applicable when operating time is short and stopped time is greater than or equal to operating time. These ratings are applicable for 1.0 service factor loads, and may require modification depending upon characteristics of the applicable driven loads. Refer to the "Service Factors" table for more information.

7) Maximum Thermal Ratings are limits for gearbox continuous use without overheating.

- 1) Nominal Motor HP is the highest HP 1800 rpm motor to be used with the gearbox under conditions of 1.0 service factor. Gearbox input power capacity decreases as motor speed decreases and as service factor increases.
- 2) Output Type: D = Dual Shaft; H = Hollow Bore; L = Left-Hand Shaft; R = Right-Hand Shaft.
- 3) Center Distance is the distance between the centerlines of the input and output shafts/bore; serves as the gearbox frame size.
- 4) Overhung Load ratings are for forces perpendicular to the output shaft and located at the shaft midpoint, such as from a gear, pulley, or sprocket with a belt or chain. Divide OHL ratings by the applicable OHL K factors shown separately in the Selection Factors tables. OHL ratings should also be divided by applicable service factors.
- 5) Thrust Load ratings are for forces along the axis of the output shaft, usually encountered in vertical-drive applications from agitators, mixers, fans, blowers, etc.
- 6) Maximum Mechanical Ratings are limits based on strength and durability of gearbox components; applicable when operating time is short and stopped time is greater than or equal to operating time. These ratings are applicable for 1.0 service factor loads, and may require modification depending upon characteristics of the applicable driven loads. Refer to the "Service Factors" table for more information.
- 7) Maximum Thermal Ratings are limits for gearbox continuous use without overheating.

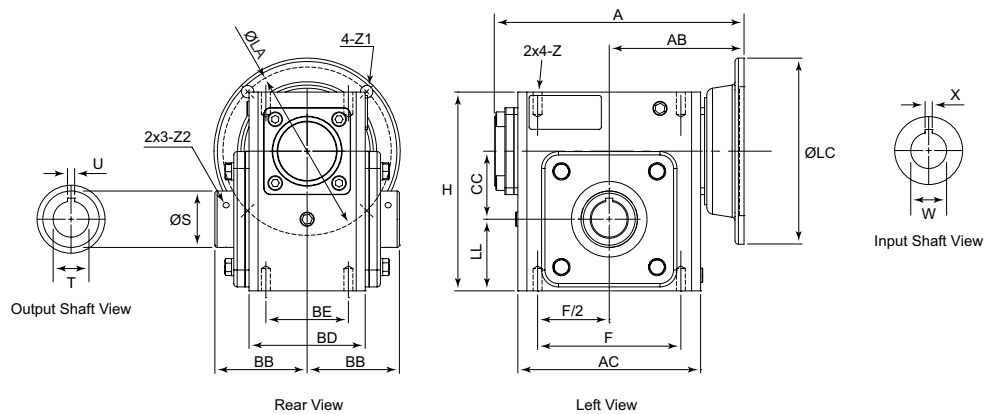


**IRONHORSE® CAST-IRON WORM GEARBOX DIMENSIONS****SOLID-SHAFT OUTPUT GEARBOXES WG-xxx-xxx-D/L/R**

| Dimensions (inches) – IronHorse Cast-Iron Worm Gearboxes – Solid-Shaft Outputs   |         |        |       |       |             |      |              |       |       |      |       |         |  |
|--|---------|--------|-------|-------|-------------|------|--------------|-------|-------|------|-------|---------|--|
| Part Number  | Frame   | A      | AB    | AC    | BB          | BD   | BE           | CC    | F     | H    | LL    | Z (UNC) |  |
| WG-175-xxx-D/L/R   | 56C     | 7.29   | 4.035 | 5.06  | 4.311       | 3.56 | 2.75         | 1.75  | 4.188 | 5.75 | 2.062 | 5/16-18 |  |
| WG-206-xxx-D/L/R   |         | 7.95   | 4.37  | 5.75  | 4.69        | 3.82 | 2.88         | 2.062 | 5     | 6.38 | 2.281 |         |  |
| WG-237-xxx-D/L/R   |         | 8.71   | 4.705 | 6.38  | 5.087       | 4.06 | 2.88         | 2.375 | 5     | 6.94 | 2.5   |         |  |
| WG-262-005-D/L/R   | 182TC   | 10.57  | 6.24  | 7.17  | 5.63        | 4.69 | 3.375        | 2.625 | 6.375 | 8    | 2.938 | 3/8-16  |  |
| WG-262-010-D/L/R   | 56C     | 9.41   | 5.059 |       |             |      |              |       |       |      |       |         |  |
| WG-262-015-D/L/R   |         |        |       |       |             |      |              |       |       |      |       |         |  |
| WG-262-020-D/L/R   |         |        |       |       |             |      |              |       |       |      |       |         |  |
| WG-262-040-D/L/R   |         |        |       |       |             |      |              |       |       |      |       |         |  |
| WG-262-060-D/L/R   | 182/4TC | 12.60  | 7.24  | 9.02  | 7.06        | 5.75 | 4.00         | 3.25  | 7.50  | 9.38 | 3.50  | 7/16-14 |  |
| WG-325-010-xC  |         |        |       |       |             |      |              |       |       |      |       |         |  |
| WG-325-015-xC  |         |        |       |       |             |      |              |       |       |      |       |         |  |
| WG-325-020-xC  |         |        |       |       |             |      |              |       |       |      |       |         |  |
| WG-325-030-xA  |         |        |       |       |             |      |              |       |       |      |       |         |  |
| WG-325-030-xB  | 145TC   | 11.42  | 6.06  |       |             |      |              |       |       |      |       |         |  |
| WG-325-030-xC  | 182TC   |        |       |       |             |      |              |       |       |      |       |         |  |
| WG-325-040-xA  | 56C     | 11.42  | 6.06  |       |             |      |              |       |       |      |       |         |  |
| WG-325-040-xB  | 145TC   |        |       |       |             |      |              |       |       |      |       |         |  |
| WG-325-060-xA  | 56C     |        |       |       |             |      |              |       |       |      |       |         |  |
| WG-325-060-xB  | 145TC   |        |       |       |             |      |              |       |       |      |       |         |  |
| Part # (repeated)  | Frame   | Flange |       |       | Input Shaft |      | Output Shaft |       |       |      |       |         |  |
|  |         | LA     | LC    | Z1    | W           | X    | L1           | N     | S     | X2   |       |         |  |
| WG-175-xxx-D/L/R   | 56C     | 5.875  | 6.496 | 0.433 | 5/8         | 3/16 | 1            | 1.781 | 7/8   | 3/16 | 1/4   |         |  |
| WG-206-xxx-D/L/R   |         |        |       |       |             |      | 1.25         | 2.09  | 1     |      |       |         |  |
| WG-237-xxx-D/L/R   |         |        |       |       |             |      | 1.25         | 2.37  |       |      |       |         |  |
| WG-262-005-D/L/R   | 182TC   | 7.25   | 9     | 0.551 | 1-1/8       | 1/4  | 2            | 2.626 | 1-1/8 |      |       |         |  |
| WG-262-010-D/L/R   |         |        |       |       |             |      |              |       |       |      |       |         |  |
| WG-262-015-D/L/R   |         |        |       |       |             |      |              |       |       |      |       |         |  |
| WG-262-020-D/L/R   | 56C     | 5.875  | 6.496 | 0.433 | 5/8         | 3/16 |              |       |       |      |       |         |  |
| WG-262-040-D/L/R   |         |        |       |       |             |      |              |       |       |      |       |         |  |
| WG-262-060-D/L/R   |         |        |       |       |             |      |              |       |       |      |       |         |  |
| WG-325-010-xC  | 182/4TC | 7.25   | 9.00  | 0.55  | 1-1/8       | 1/4  | 2.44         | 3.25  | 1-3/8 | 5/16 |       |         |  |
| WG-325-015-xC  |         |        |       |       |             |      |              |       |       |      |       |         |  |
| WG-325-020-xC  |         |        |       |       |             |      |              |       |       |      |       |         |  |
| WG-325-030-xA  | 56C     | 5.875  | 6.50  | 0.41  | 5/8         | 3/16 |              |       |       |      |       |         |  |
| WG-325-030-xB  | 145TC   |        |       |       | 7/8         |      |              |       |       |      |       |         |  |
| WG-325-030-xC  | 182TC   | 7.25   | 9.00  | 0.55  | 1-1/8       | 1/4  |              |       |       |      |       |         |  |
| WG-325-040-xA  | 56C     | 5.875  | 6.50  | 0.41  | 5/8         | 3/16 |              |       |       |      |       |         |  |
| WG-325-040-xB  | 145TC   |        |       |       | 7/8         |      |              |       |       |      |       |         |  |
| WG-325-060-xA  | 56C     |        |       |       | 5/8         |      |              |       |       |      |       |         |  |
| WG-325-060-xB  | 145TC   |        |       |       | 7/8         |      |              |       |       |      |       |         |  |
| Dual-shaft output gearboxes have output shafts on both sides (dimensions BB, L1, N, S, & X2).                              |         |        |       |       |             |      |              |       |       |      |       |         |  |
| Left-hand shaft gearboxes have output shafts only on the left side, as viewed looking into the input shaft.                |         |        |       |       |             |      |              |       |       |      |       |         |  |
| Right-hand shaft gearboxes have output shafts only on the right side, as viewed looking into the input shaft.              |         |        |       |       |             |      |              |       |       |      |       |         |  |
| See our website: <a href="http://www.AutomationDirect.com">www.AutomationDirect.com</a> for complete engineering drawings. |         |        |       |       |             |      |              |       |       |      |       |         |  |



**IRONHORSE® CAST-IRON WORM GEARBOX DIMENSIONS (CONTINUED)**  
**HOLLOW-BORE OUTPUT GEARBOXES WG-xxx-xxx-H**

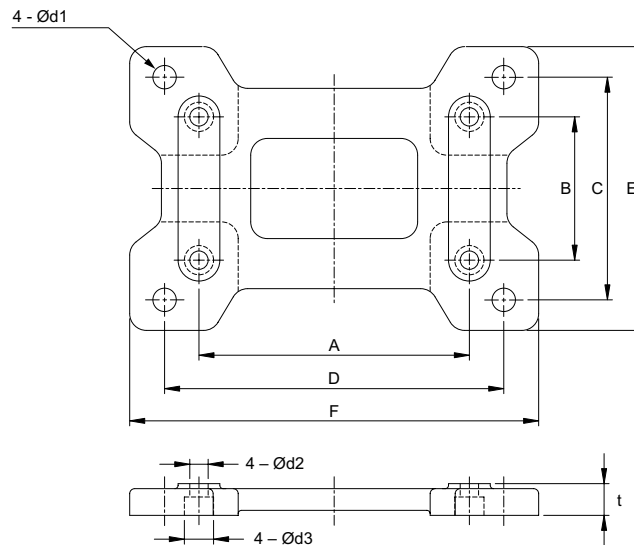


| Dimensions (inches) – IronHorse Cast-Iron Worm Gearboxes – Hollow-Bore Outputs   |         |        |       |             |       |       |             |       |       |          |       |         |
|--|---------|--------|-------|-------------|-------|-------|-------------|-------|-------|----------|-------|---------|
| Part Number  | Frame   | A      | AB    | AC          | BB    | BD    | BE          | CC    | F     | H        | LL    | Z (UNC) |
| WG-175-xxx-H   | 56C     | 7.28   | 4.035 | 5.059       | 3.091 | 3.563 | 2.750       | 1.75  | 4.188 | 5.75     | 2.062 | 3/8-16  |
| WG-206-xxx-H   |         | 7.95   | 4.370 | 5.748       | 3.219 | 3.819 | 2.880       | 2.062 | 5.000 | 6.375    | 2.281 |         |
| WG-237-xxx-H   |         | 8.68   | 4.705 | 6.378       | 3.220 | 4.055 | 2.880       | 2.375 | 5.000 | 6.937    | 2.500 |         |
| WG-262-005-H   | 182TC   | 10.59  | 6.240 | 7.165       | 3.500 | 4.685 | 3.375       | 2.625 | 6.375 | 8.000    | 2.938 |         |
| WG-262-010-H   | 56C     | 9.41   | 5.059 |             |       |       |             |       |       |          |       |         |
| WG-262-015-H   |         |        |       |             |       |       |             |       |       |          |       |         |
| WG-262-020-H   |         |        |       |             |       |       |             |       |       |          |       |         |
| WG-262-040-H   |         |        |       |             |       |       |             |       |       |          |       |         |
| WG-262-060-H   |         |        |       |             |       |       |             |       |       |          |       |         |
| WG-325-010-HC  | 182/4TC | 12.60  | 7.24  | 9.02        | 4.375 | 5.75  | 4.00        | 3.25  | 7.50  | 9.38     | 3.50  | 7/16-14 |
| WG-325-015-HC  | 182TC   |        |       |             |       |       |             |       |       |          |       |         |
| WG-325-020-HC  | 56C     | 11.42  | 6.06  |             |       |       |             |       |       |          |       |         |
| WG-325-030-HA  | 145TC   |        |       |             |       |       |             |       |       |          |       |         |
| WG-325-030-HB  | 56C     |        |       |             |       |       |             |       |       |          |       |         |
| WG-325-040-HA  | 145TC   |        |       |             |       |       |             |       |       |          |       |         |
| WG-325-040-HB  | 56C     |        |       |             |       |       |             |       |       |          |       |         |
| WG-325-060-HA  | 145TC   |        |       |             |       |       |             |       |       |          |       |         |
| WG-325-060-HB  |         |        |       |             |       |       |             |       |       |          |       |         |
| Part # (repeated)  | Frame   | Flange |       | Input Shaft |       |       | Output Bore |       |       |          |       |         |
|  |         | LA     | LC    | Z1          | W     | X     | S           | T     | U     | Z2 (UNF) |       |         |
| WG-175-xxx-H   | 56C     | 5.875  | 6.496 | 0.433       | 5/8   | 3/16  | 1.575       | 1.0   | 1/4   | #10-32   |       |         |
| WG-206-xxx-H   |         |        |       |             |       |       | 1.772       | 1.125 |       |          |       |         |
| WG-237-xxx-H   |         |        |       |             |       |       | 1.969       | 1.250 |       |          |       |         |
| WG-262-005-H   | 182TC   | 7.25   | 9.000 | 0.551       | 1-1/8 | 1/4   | 2.362       | 1.437 | 3/8   | 1/4-28   |       |         |
| WG-262-010-H   | 56C     | 5.875  | 6.496 | 0.433       | 5/8   | 3/16  |             |       |       |          |       |         |
| WG-262-015-H   |         |        |       |             |       |       |             |       |       |          |       |         |
| WG-262-020-H   |         |        |       |             |       |       |             |       |       |          |       |         |
| WG-262-040-H   |         |        |       |             |       |       |             |       |       |          |       |         |
| WG-262-060-H   |         |        |       |             |       |       |             |       |       |          |       |         |
| WG-325-010-HC  | 182/4TC | 7.25   | 9.00  | 0.55        | 1-1/8 | 1/4   | 2.76        | 1.938 | 1/2   | 5/16-24  |       |         |
| WG-325-015-HC  | 182TC   |        |       |             |       |       |             |       |       |          |       |         |
| WG-325-020-HC  | 56C     | 5.88   | 6.50  | 0.41        | 5/8   | 3/16  |             |       |       |          |       |         |
| WG-325-030-HA  | 145TC   |        |       |             | 7/8   |       |             |       |       |          |       |         |
| WG-325-030-HB  | 56C     |        |       |             | 5/8   |       |             |       |       |          |       |         |
| WG-325-040-HA  | 145TC   |        |       |             | 7/8   |       |             |       |       |          |       |         |
| WG-325-040-HB  | 56C     |        |       |             | 5/8   |       |             |       |       |          |       |         |
| WG-325-060-HA  | 145TC   |        |       |             | 7/8   |       |             |       |       |          |       |         |
| WG-325-060-HB  |         |        |       |             |       |       |             |       |       |          |       |         |
| See our website: <a href="http://www.AutomationDirect.com">www.AutomationDirect.com</a> for complete engineering drawings. |         |        |       |             |       |       |             |       |       |          |       |         |

See our website: [www.AutomationDirect.com](http://www.AutomationDirect.com) for complete engineering drawings.

# IRONHORSE® CAST-IRON WORM GEARBOX ACCESSORY MOUNTING BASES

## MOUNTING BASE SELECTION AND DIMENSIONS



| IronHorse Worm Gearbox Mounting Bases |                      |                    |                 |      |      |      |      |       |      |      |      |      |
|---------------------------------------|----------------------|--------------------|-----------------|------|------|------|------|-------|------|------|------|------|
| Part Number                           | Fits Gearbox Numbers | Approx Weight (lb) | Dimensions (in) |      |      |      |      |       |      |      |      |      |
|                                       |                      |                    | A               | B    | C    | D    | E    | F     | t    | d1   | d2   | d3   |
| <b>WG-175-BASE</b>                    | <b>WG-175-xxx-x</b>  | 4.0                | 4.19            | 2.76 | 4.50 | 5.75 | 5.69 | 7.00  | 0.69 | 0.43 | 0.35 | 0.55 |
| <b>WG-206-BASE</b>                    | <b>WG-206-xxx-x</b>  | 4.8                | 5.00            | 2.88 | 4.69 | 6.38 | 5.91 | 7.76  | 0.72 | 0.47 | 0.43 | 0.69 |
| <b>WG-237-BASE</b>                    | <b>WG-237-xxx-x</b>  | 6.2                | 5.00            | 2.88 | 4.88 | 7.06 | 6.22 | 8.50  | 0.75 | 0.47 | 0.43 | 0.69 |
| <b>WG-262-BASE</b>                    | <b>WG-262-xxx-x</b>  | 7.5                | 6.38            | 3.38 | 5.25 | 8.00 | 6.69 | 9.65  | 0.75 | 0.55 | 0.43 | 0.69 |
| <b>WG-325-BASE</b>                    | <b>WG-325-xxx-xx</b> | 12.0               | 7.50            | 4.00 | 6.13 | 9.50 | 7.66 | 11.19 | 0.88 | 0.50 | 0.47 | 0.71 |